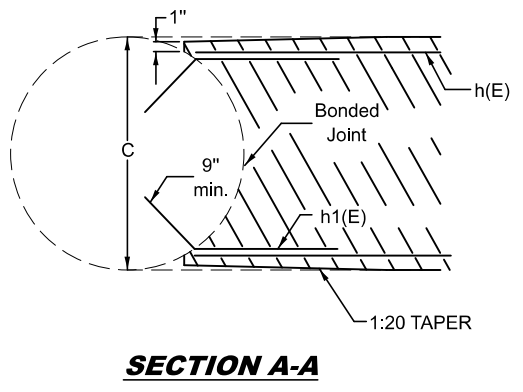
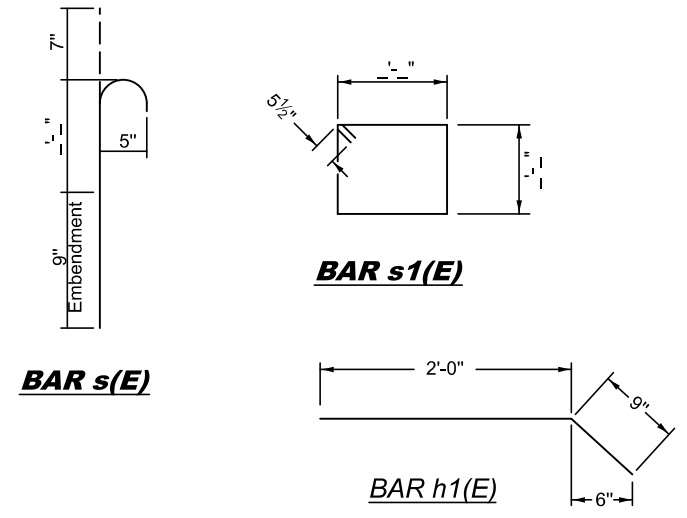


**ELEVATION**

**SECTION B-B**



**SECTION A-A**

**DIMENSIONS**

Location	B	C	D	E	F

\*Epoxy grout bars in 9" min. holes according to Article 584 of the Standard Specifications.

**BILL OF MATERIAL**

Bar	No.	Size	Length	Shape
h(E)	7	#5	1' "	—
h1(E)	12	#5	2'-9"	—
s(E)		#5	1' "	—
s1(E)		#5	1' "	—
Reinforcement Bars, Epoxy Coated		Pound	000	
Concrete Structures		Cu. Yd.	00.0	

**GENERAL NOTES**

Plan dimensions and details relative to existing plans are subject to nominal construction variations. The Contractor shall field verify existing dimensions and details affecting new construction and make necessary approved adjustments prior to construction or ordering of materials. Such variations shall not be cause for additional compensation for a change in scope of the work, however, the Contractor will be paid for the quantity actually furnished at the unit price bid for the work.

Reinforcement bars designated (E) shall be epoxy coated.

Reinforcement bars shall conform to the requirements of AASHTO M-31, M-42 or M-53 Grade 60.

The cost of epoxy grouting bars shall be included with reinforcement bars (epoxy coated).

Designer Note: Existing piers should have crashwalls extended to 4'-0" min. height per BM 2.3.6.2.2 Pier Type & 3.9.4.1 Circular & Trapezoidal Column Bents with Cap Beam and Crashwall. See also BDE 50-3.02(b) Piers/Abutments.

The provisions of BM 3.9.3.7 & ABD Memo. 12.1 "Vehicle Collision Forces" are not applicable for existing piers and apply only for new piers where a 5'-0" crashwall height is required.

Two Column Circular Pier Shown.  
Multiple columns similar.

Note: All dimensions are in INCHES (millimeters) unless otherwise shown.

**DISTRICT 5 DETAIL NO. XX002909A**

USER NAME = Justin.Cearlock	DESIGNED - KJT	REVISED - KJT 10/2008
DRAWN -	REVISOR - KJT 5/2011	
PLOT SCALE = 0.16666633' / in.	CHECKED -	REVISED - SWN 3/6/2017
PLOT DATE = 4/29/2024	DATE - 11/2006	REVISED - TJB 6/7/2022

**STATE OF ILLINOIS  
DEPARTMENT OF TRANSPORTATION**

**CRASHWALL EXTENSION (CIRCULAR COLUMN PIER)**

SCALE: SHEET 1 OF 1 SHEETS STA. TO STA.

F.A. RTE.	SECTION	COUNTY	TOTAL SHEETS	SHEET NO.
CONTRACT NO.				
ILLINOIS FED. AID PROJECT				

MODEL: XX002909A  
FILE NAME: c:\pwwork\office\carlock\0872377\05\###\Sh-Detail\_XX002909A.dgn