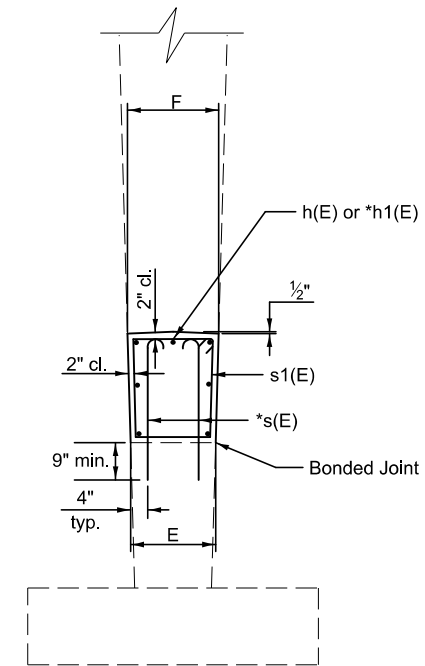


ELEVATION



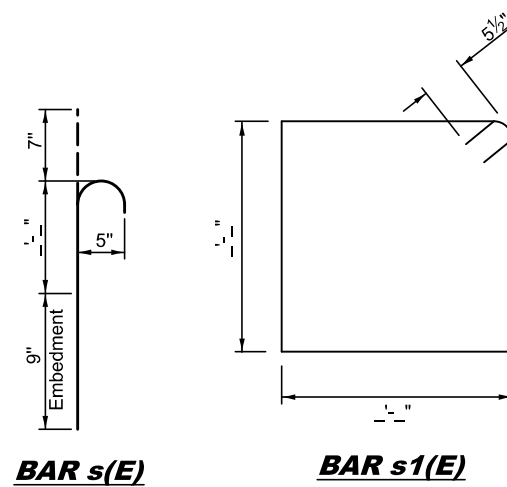
SECTION A-A

DIMENSIONS

Location	B	C	D	E	F

BILL OF MATERIAL

Bar	No.	Size	Length	Shape
h(E)	7	#5	'-"	—
h1(E)	14	#5	2'-9"	—
s(E)		#5	'-"	—
s1(E)		#5	'-"	—
Reinforcement Bars, Epoxy Coated			Pound	000
Concrete Structures			Cu. Yd.	00.0



BAR s(E)

BAR s1(E)

*Epoxy grout bars in 9" min. holes according to Article 584 of the Standard Specifications.

GENERAL NOTES

Plan dimensions and details relative to existing plans are subject to nominal construction variations. The Contactor shall field verify existing dimensions and details affecting new construction and make necessary approved adjustments prior to construction or ordering of materials. Such variations shall not be cause for additional compensation for a change in scope of the work, however, the Contractor will be paid for the quantity actually furnished at the unit price bid for the work.

Reinforcement bars designated (E) shall be epoxy coated.

Reinforcement bars shall conform to the requirements of AASHTO M-31, M-42 or M-53 Grade 60.

The cost of epoxy grouting bars shall be included with reinforcement bars (epoxy coated).

Designer Note: Existing piers should have crashwalls extended to 4'-0" min. height per BM 2.3.6.2.2 Pier Type & 3.9.4.1 Circular & Trapezoidal Column Bents with Cap Beam and Crashwall. See also BDE 50-3.02(b) Piers/Abutments.

The provisions of BM. 3.9.3.7 & ABD Memo. 12.1 "Vehicle Collision Forces" are not applicable for existing piers and apply only for new piers where a 5'-0" crashwall height is required.

Note: All dimensions are in INCHES (millimeters) unless otherwise shown.

DISTRICT 5 DETAIL NO. XX002909B

MODEL: XX002909B
FILE NAME: c:\pwworking\autocad\cadd\0872377\05\###\Sh-Detail_XX002909B.dgn

USER NAME = Justin.Cearlock	DESIGNED - KJT	REVISED - KJT 10/2008
PLOT SCALE = 0.16666633 1/In.	CHECKED -	REVISED - KJT 5/2011
PLOT DATE = 4/29/2024	DATE - 11/2006	REVISED - SWN 3/6/2017
		REVISED - TJB 6/7/2022

**STATE OF ILLINOIS
DEPARTMENT OF TRANSPORTATION**

CRASHWALL EXTENSION (TRAPEZOIDAL COLUMN PIER)

SCALE: SHEET 1 OF 1 SHEETS STA. TO STA.

F.A. RTE.	SECTION	COUNTY	TOTAL SHEETS	SHEET NO.
CONTRACT NO.				
ILLINOIS FED. AID PROJECT				