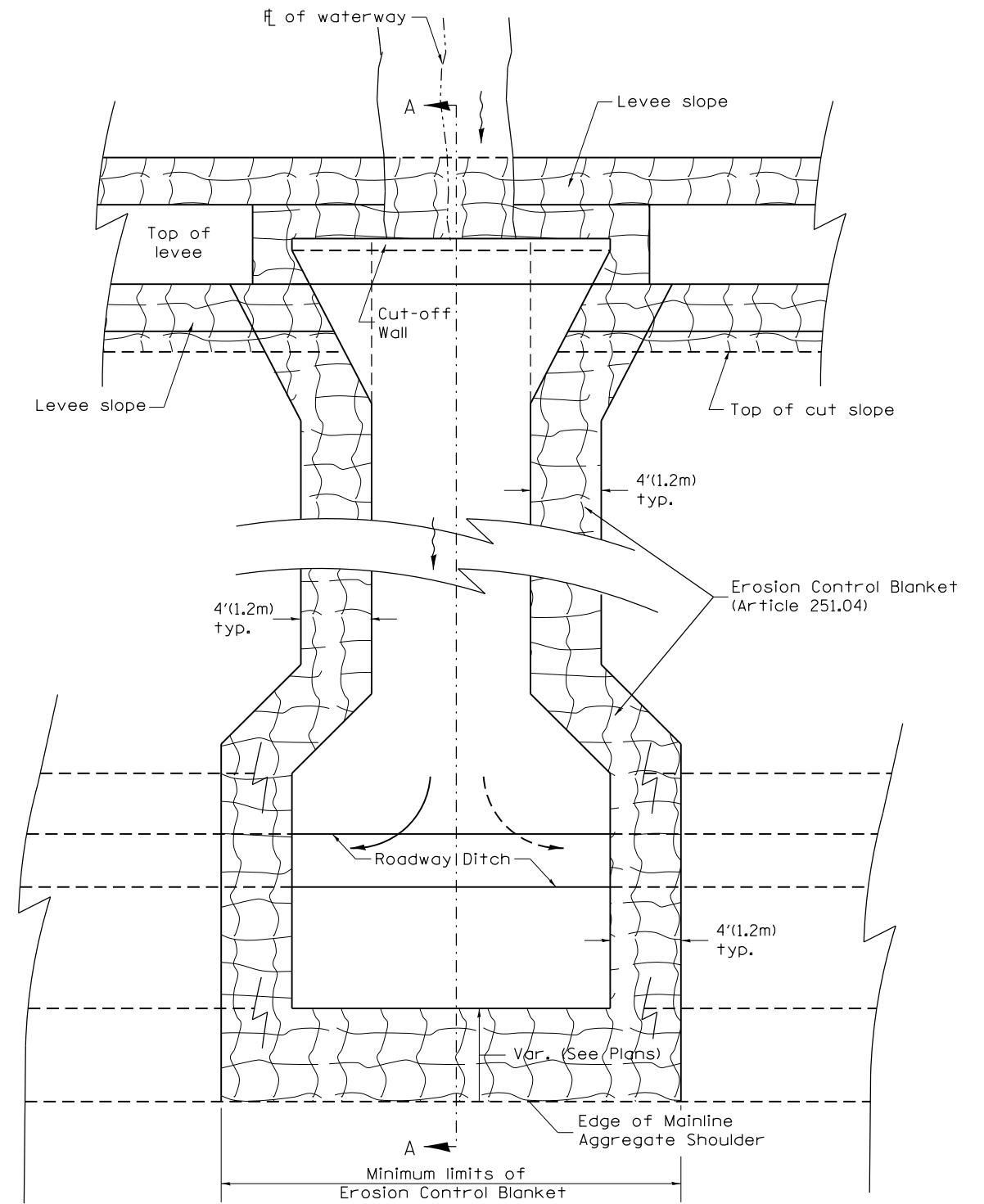
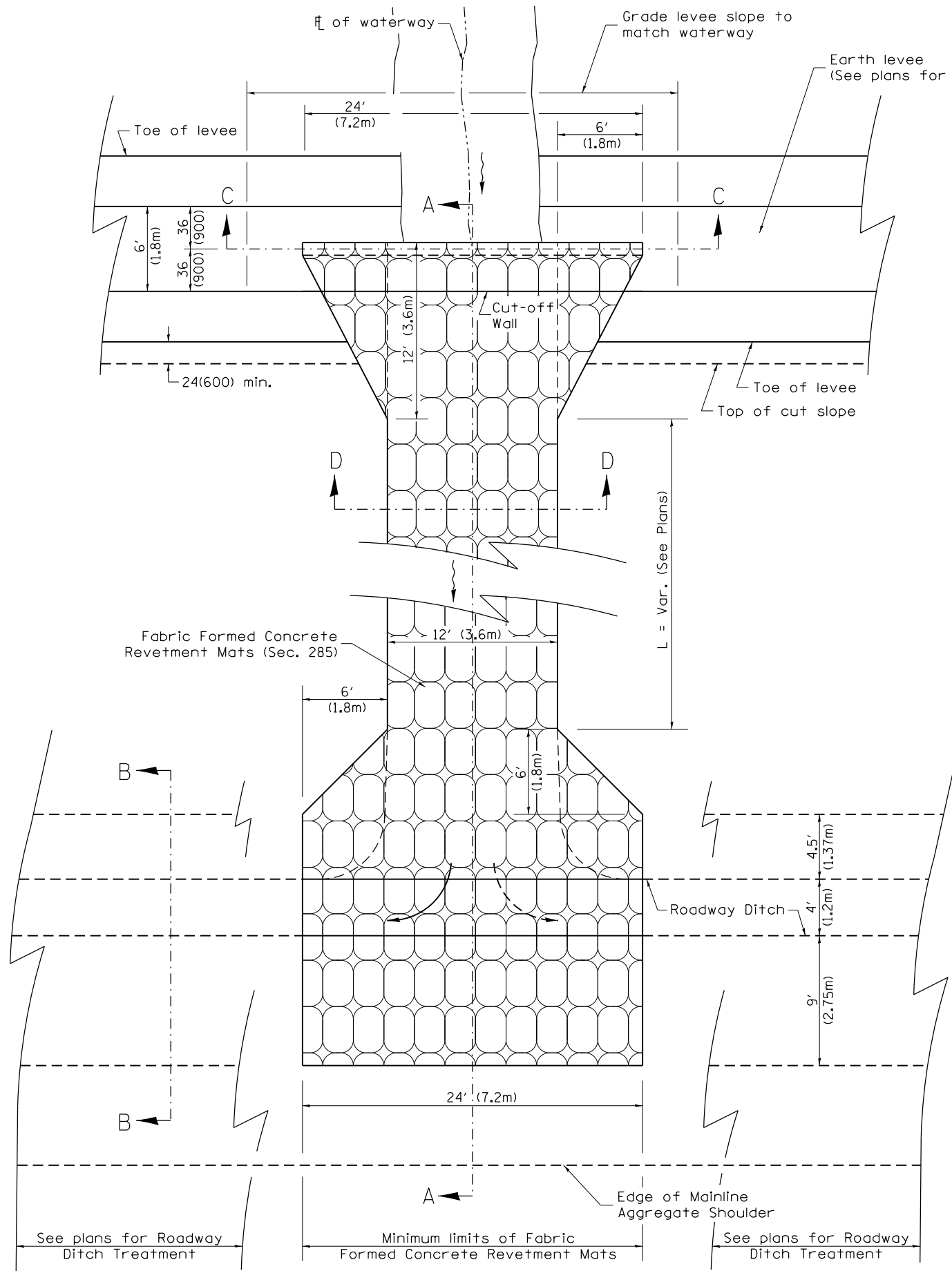


Designer NOTES:
 1. Designer to modify this Special Detail sheet, as needed, for inclusion in plans.
 2. Include District CADD Detail for Fabric Formed Concrete Revetment Mats.

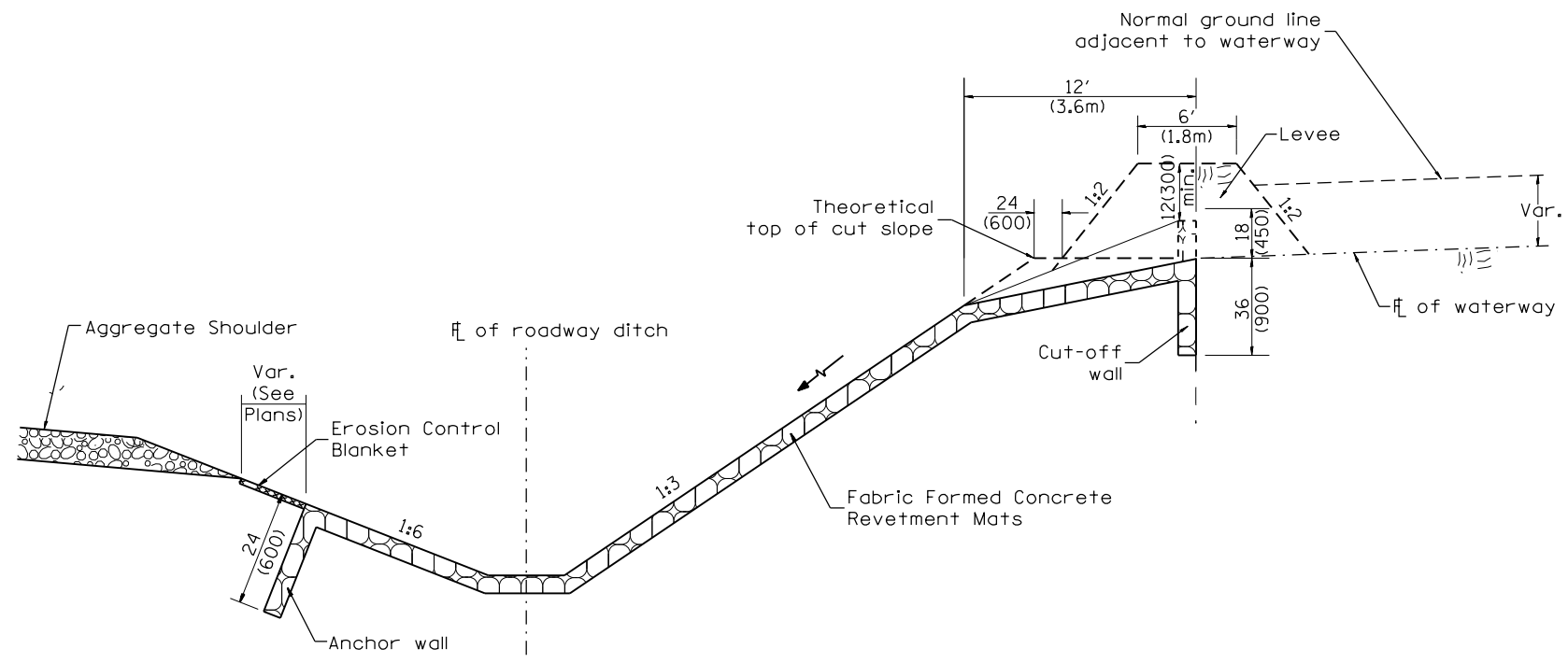


General NOTES:

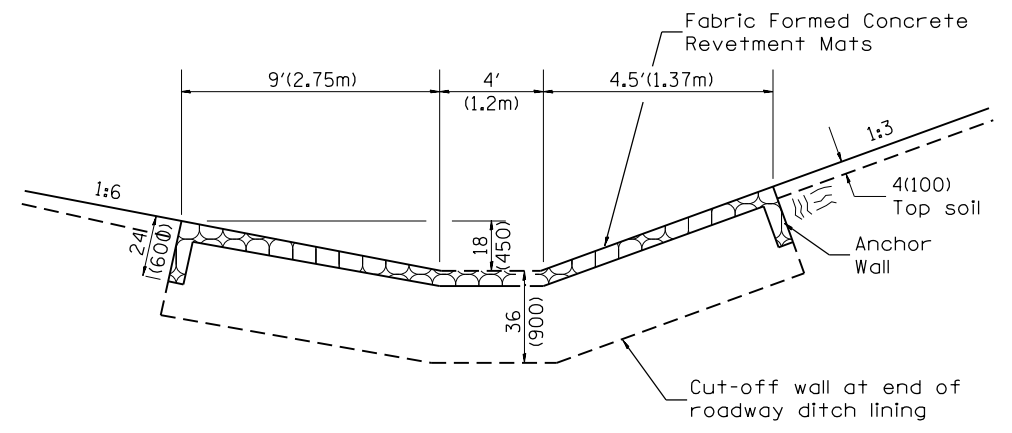
1. Fabric Formed Concrete Revetment Mats shall conform to SECTION 285.
2. Erosion Control Blanket shall conform to Article 251.04.

All dimensions are in inches (millimeters) unless otherwise noted.

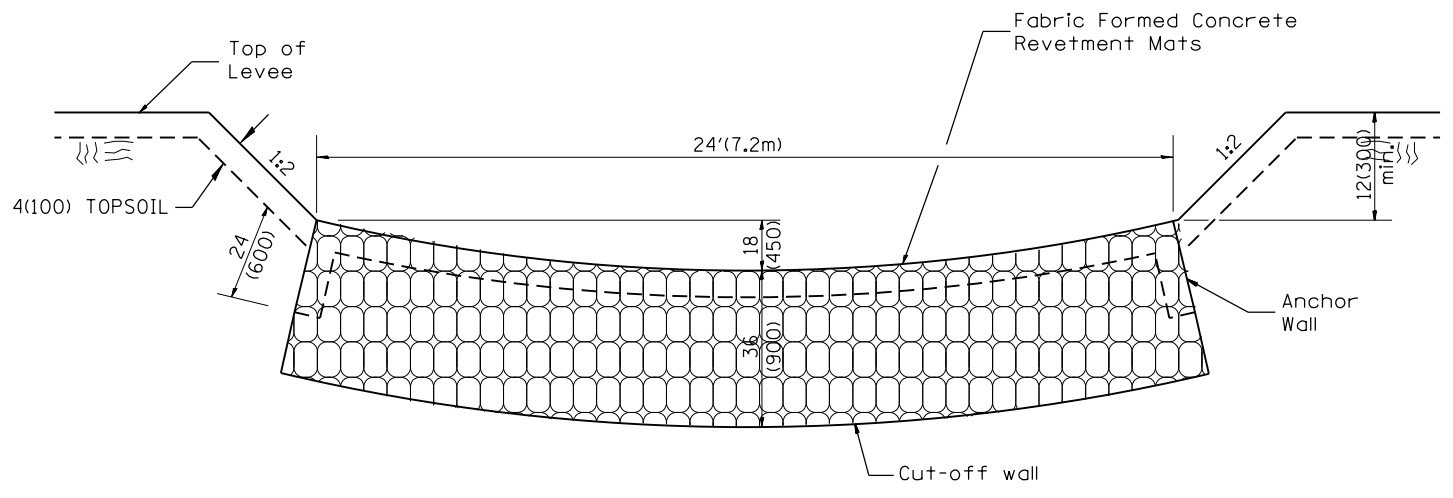
1-1-97	RENUM. A-12.06, NEW REVISION BOX	T.P.												
10-16-06	REVISED TO 2007 SPEC.	M.A.												
STATE OF ILLINOIS DEPARTMENT OF TRANSPORTATION										WATERWAY EROSION CONTROL, UPSTREAM TREATMENT, FABRIC FORMED CONCRETE REVETMENT MATS				
										SHT. 1 OF 2 CADD STD. 285101-D4				
										NOT TO SCALE				
										CONTRACT NO.				
										FED. ROAD DIST. NO. ILLINOIS FED. AID PROJECT				



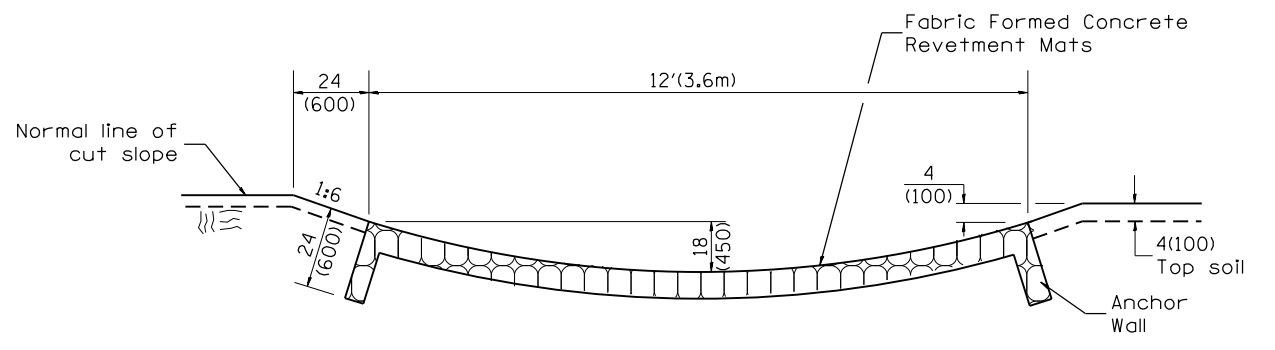
SECTION A-A



SECTION B-B



SECTION C-C



SECTION D-D

All slope ratios are expressed as units of vertical displacement to units of horizontal displacement (V:H).
 All dimensions are in inches (millimeters) unless otherwise noted.