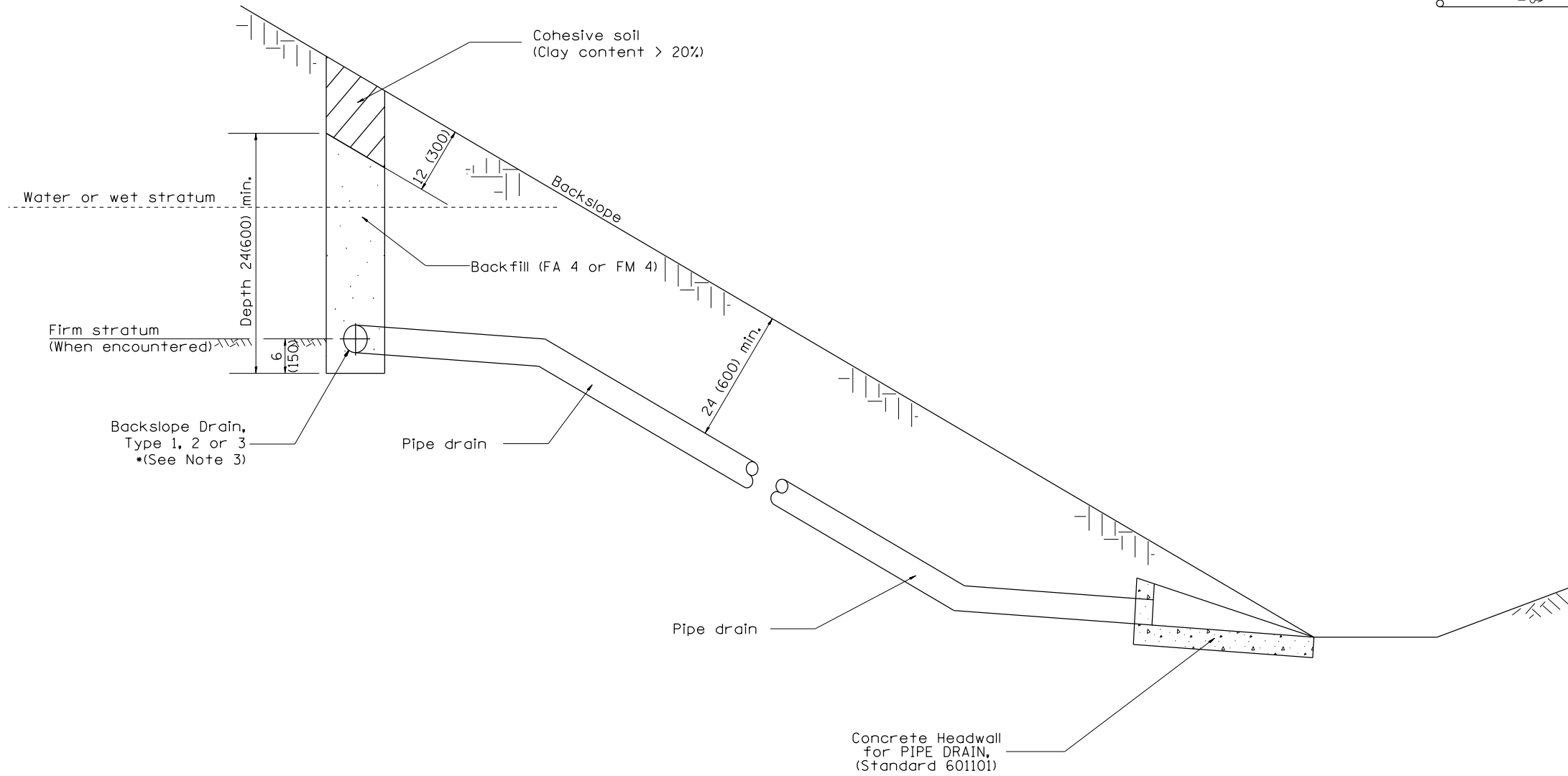


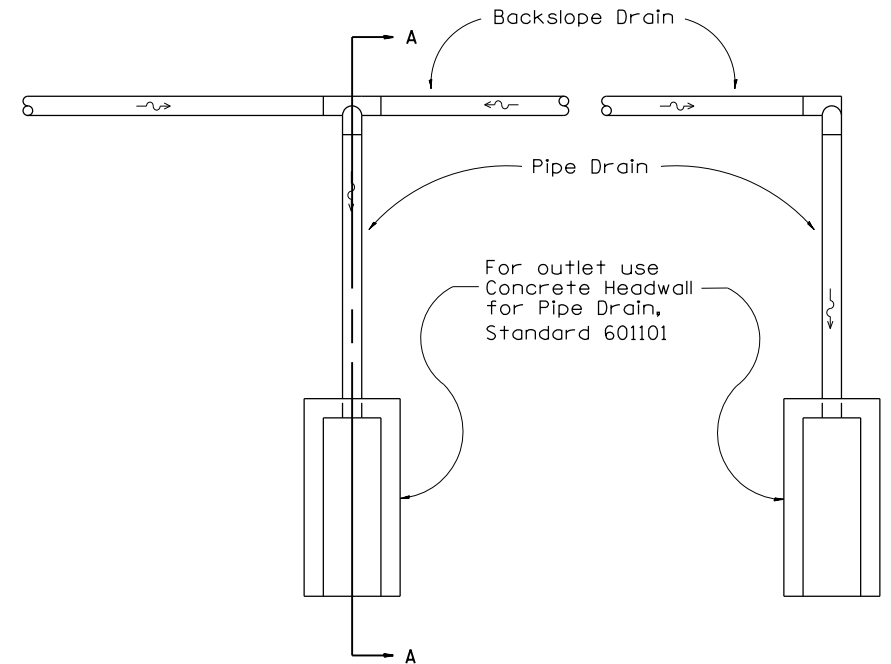
DESIGNER NOTES:
 1. LOCATIONS AND SIZES OF BACKSLOPE DRAINS DEFINED IN GEOTECHNICAL REPORT OR BY THE GEOTECHNICAL ENGINEER.
 2. GENERAL GUIDES FOR SIZES: OVER 500'(150 m); USE 6(150), UNDER 500'(150 m); USE 4(100).
 3. INCLUDE STANDARD 601101 FOR "CONCRETE HEADWALL FOR PIPE DRAIN".
 4. INCLUDE DISTRICT SPECIAL PROVISIONS.



SECTION A-A

GENERAL NOTES:

1. The District Geotechnical Engineer will determine the Backslope Drain design, after the backslope has been constructed.
2. This work shall be done in accordance with the applicable portion of Articles 601 and 207 of the Standard Specifications and the District Special Provision for "Pipe Underdrain".
3. * See plans for "Type".



PLAN

All dimensions are in inches (millimeters) unless otherwise noted.

01-01-97	RENUM. J-6.02, NEW REVISION BOX, REVISED	T.P.																	
	TITLE BOX																		
10-16-06	REVISED TO 2007 SPEC.	M.A.																	
2-15-11	Revised Backfill Material	R.D.																	

STATE OF ILLINOIS
DEPARTMENT OF TRANSPORTATION

BACKSLOPE DRAINS

NOT TO SCALE

CADD STD. 601201-D4

F.A. RTE.	SECTION	COUNTY	TOTAL SHEETS	SHEET NO.
CONTRACT NO.				
FED. ROAD DIST. NO. ILLINOIS FED. AID PROJECT				