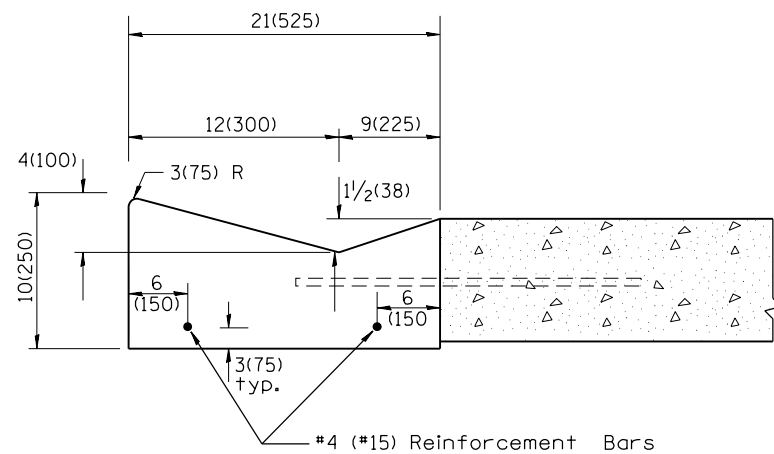
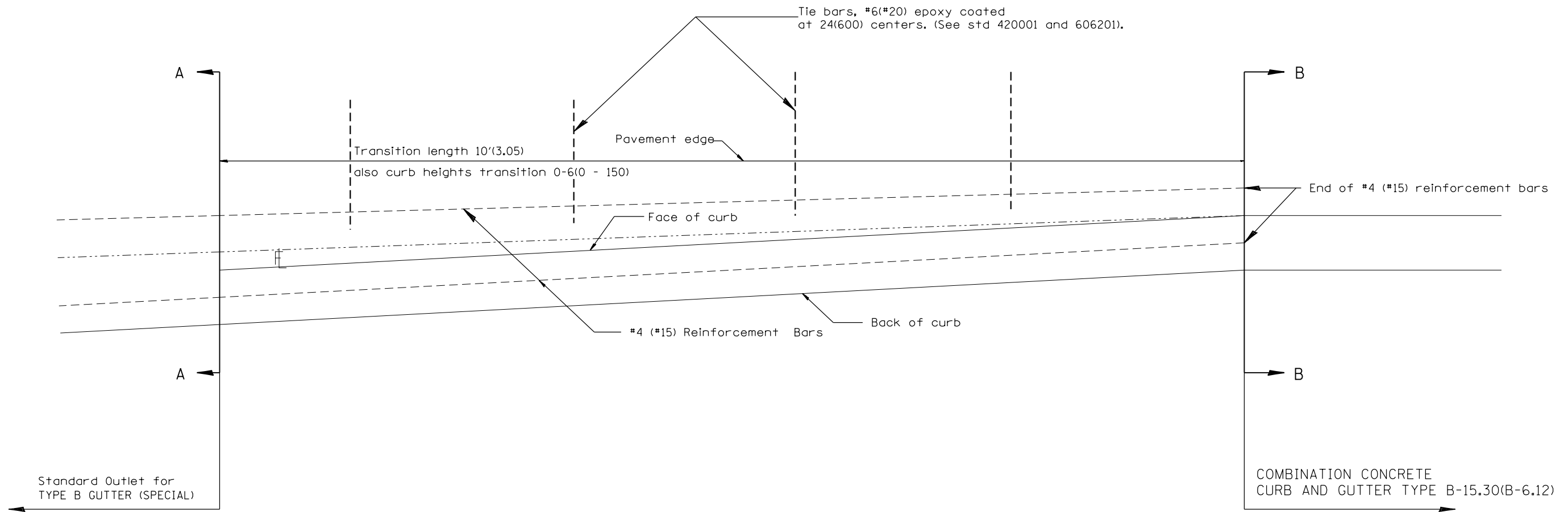
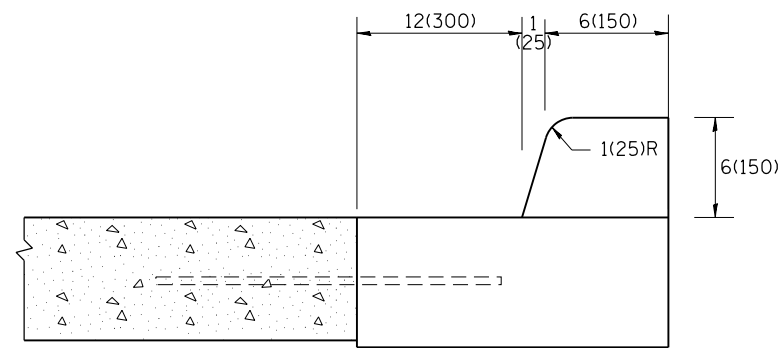


Designer Notes: 1. Use in conjunction with CAD DRAWING for Standard outlet for CONCRETE GUTTER, TYPE B, (SPECIAL)
 2. Include std 420001.
 3. Pay item for Transitions is 60603200, CONCRETE GUTTER TRANSITION (SPECIAL)



SECTION A - A



SECTION B - B

GENERAL NOTES:

1. Tie bars shall be constructed in accordance with details for BULKHEAD LONGITUDINAL CONSTRUCTION JOINT shown on Standard 420001.
2. Adjacent to sound existing p.c.c. pavement, tie bars shall be installed in drilled holes in accordance with article 420.10(b).
3. Construction and expansion joints shall be installed in prolongation with joints in the pavement. Joint shall be constructed in accordance with the applicable portion of Art. 606.06 of the Standard Specifications.

All dimensions are in inches (millimeters) unless otherwise noted.

01-01-97	RENUM. A-7.11, METRICS, NEW REVISION BOX, REVISED	T.P.																	
	GENERAL NOTES, ELIMINATED EXPANSION TIE ANCHORS																		
10-16-06	REVISED TO 2007 SPEC.	M.A.																	
02-15-11	CHANGED MODIFIED TO SPECIAL	R.D.																	

STATE OF ILLINOIS
 DEPARTMENT OF TRANSPORTATION

TRANSITION FROM CONCRETE CURB AND GUTTER TYPE B-6.12 (B-15.30)
 TO OUTLET FOR TYPE B GUTTER (SPECIAL)

NOT TO SCALE

CADD STD. 606206-D4

F.A. RTÉ.	SECTION	COUNTY	TOTAL SHEETS	SHEET NO.
CONTRACT NO.				
FED. ROAD DIST. NO.	ILLINOIS	FED. AID PROJECT		