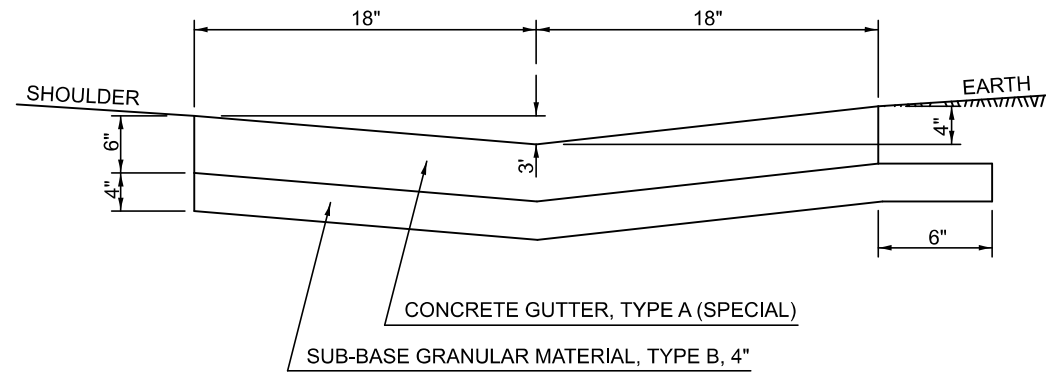
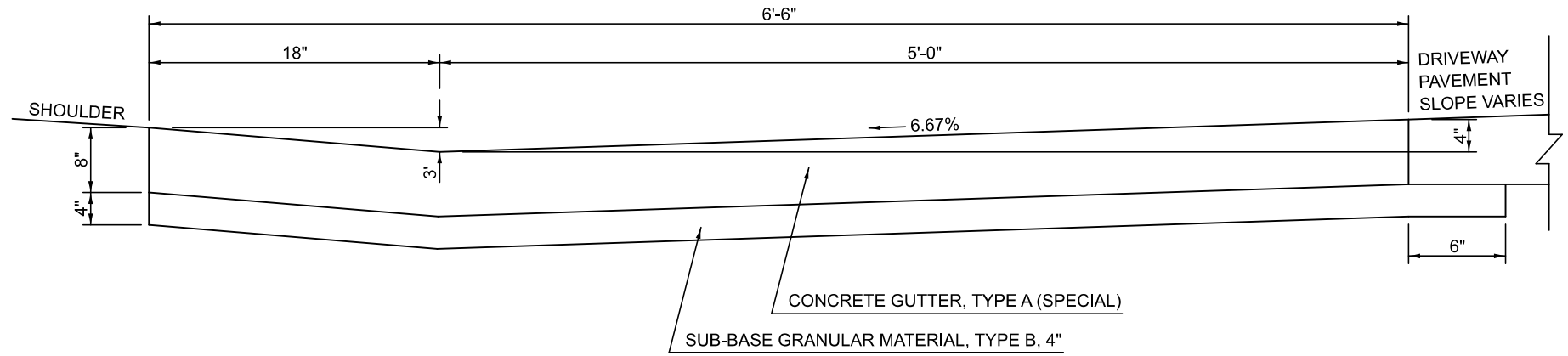


**DIMENSIONS OF CONCRETE GUTTER, TYPE A (SPECIAL)**



**DETAIL OF SPECIAL TYPE A GUTTER THROUGH ENTRANCES**



**NOTES**

This work shall consist of constructing a special Type A concrete gutter as specified herein, at the locations shown on the plans, and in accordance with the applicable portions of Section 606 of the Standard Specifications.

The proposed Concrete Gutter, Type A (Special) shall be constructed with the cross section shown on the details herein. The cross section for the Type A Gutter (Special) was specifically designed to:

- Maximize hydraulic capacity in the gutter section
- Minimize the entrance breakover between the Type A Gutter Entrance and the driveway pavement
- Improve ride quality through the Type A Gutter Entrance; therefore no changes in the gutter cross section will be allowed. In addition, all joints and reinforcing steel for Concrete Gutter, Type A (Special), shall conform to the details shown herein, the applicable details of Standard 606001, and the applicable portions of Section 606 of the Standard Specifications.

Concrete Gutter, Type A (Special) will be measured for payment in (feet) along the flow line of the gutter. Concrete inlets, entrances, and outlets along the gutter section will be measured for payment in place and the volume of concrete computed in (cubic yards).

This work will be paid for at the contract unit price per foot for CONCRETE GUTTER, TYPE A (SPECIAL) of the dimensions specified. Concrete inlets, entrances, and outlets along the gutter section will be paid for as CLASS SI CONCRETE (OUTLET).

Sub-Base Granular Material, Type B 4" shall be constructed under the Type A Gutter (Special) and Type A Gutter Entrance.

Gutter, gutter inlet, gutter outlet and gutter entrance shall be tied to the P.C.C. pavement at side streets in accordance with details for longitudinal construction joint shown on Standard 420001. Longitudinal joint tie bars shall be No. 6 at 24" centers.

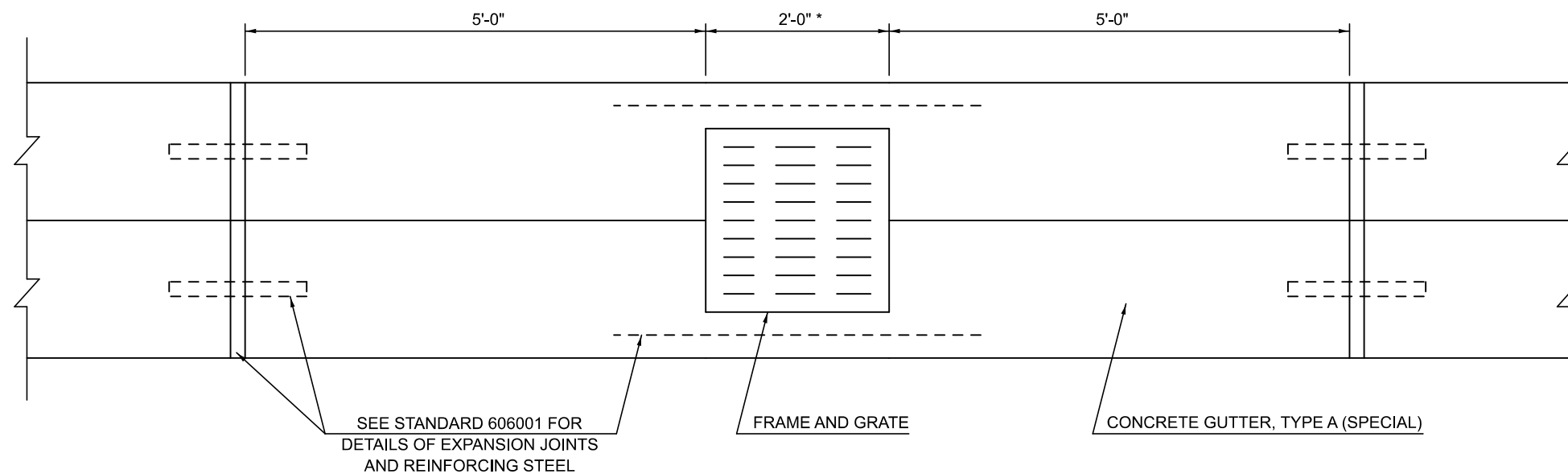
Two 1-1/4" x 18" dowel bars shall be installed in all joints when the gutter is constructed adjacent to flexible pavement.

Note: All dimensions are in INCHES (millimeters) unless otherwise shown.

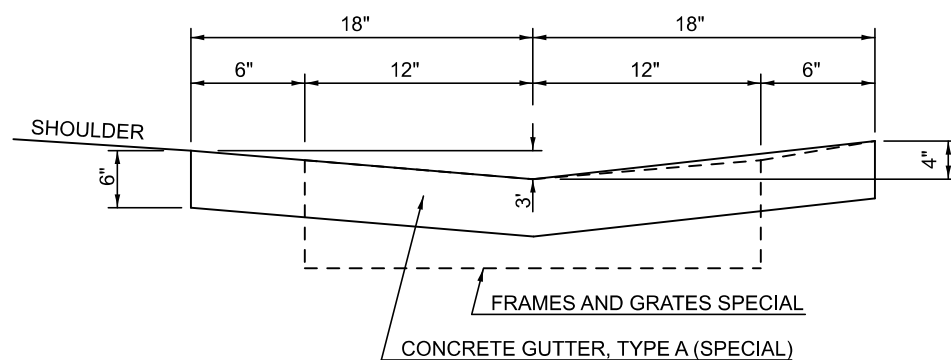
**DISTRICT 5 DETAIL NO. 60602700**

F.A. RTE.	SECTION	COUNTY	TOTAL SHEETS	SHEET NO.
CONTRACT NO.				
ILLINOIS FED. AID PROJECT				

**PLAN VIEW AT INLET LOCATIONS**



\* THIS DIMENSION WILL BE 5'-0" WHEN 6' MANHOLE SPECIAL AND 2 FRAMES AND GRATES ARE SPECIFIED.



**NOTE**

Within the 5' section of gutter between the Expansion Joints and Frames and Grates, the gutter cross section shall be constructed to taper from the Concrete Gutter, Type A (Special) cross section to the Frames and Grates Special cross section.

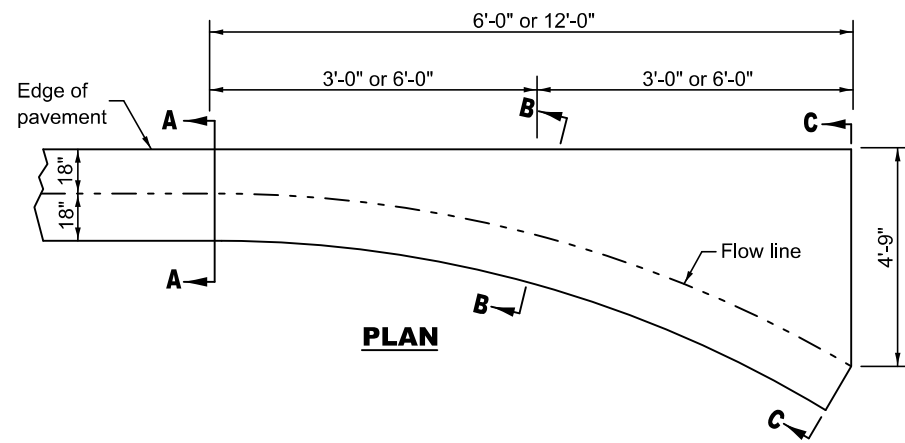
MODEL: 60602700 Sheet 1  
FILE NAME: c:\pwwork\work\autocad\60602700.dwg

USER NAME = Bridgette.Pierson	DESIGNED -	REVISED -
PLOT SCALE = 0.16666633' / in.	DRAWN -	REVISED -
PLOT DATE = 4/25/2024	CHECKED -	REVISED -
	DATE -	REVISED -

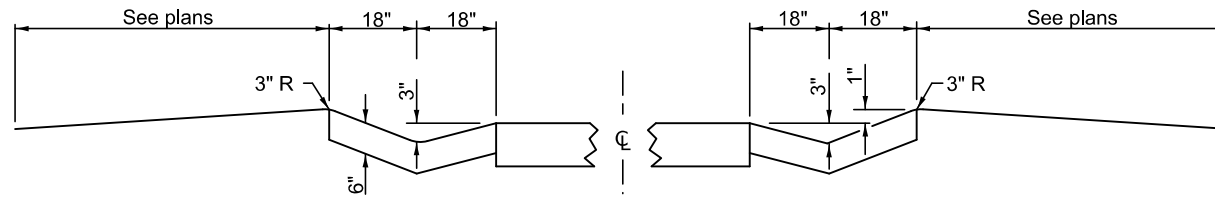
**STATE OF ILLINOIS  
DEPARTMENT OF TRANSPORTATION**

**CONCRETE CURB, TYPE A (SPECIAL)**

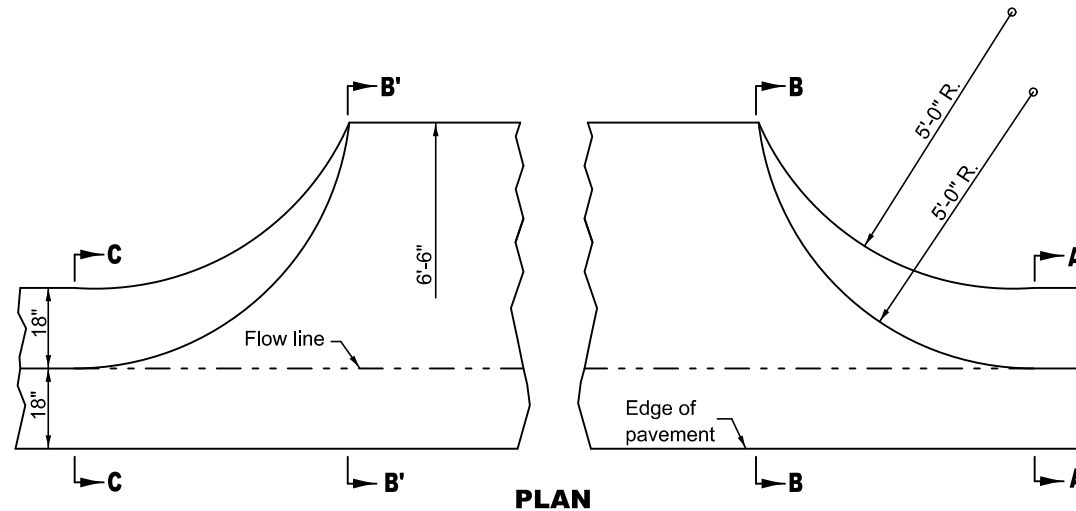
SCALE: SHEET 1 OF 3 SHEETS STA. TO STA.



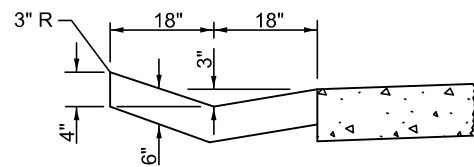
**QUANTITY**  
 For 6'-0" Inlets  
 Section C-C to Section A-A = 0.46 cu. yd.  
 For 12'-0" Inlets  
 Section C-C to A-A = 0.92 cu. yd.



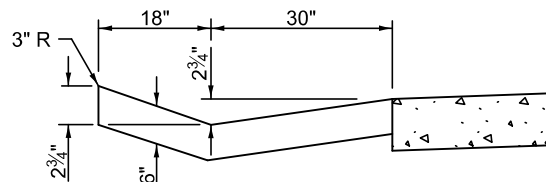
**TYPE A GUTTER**



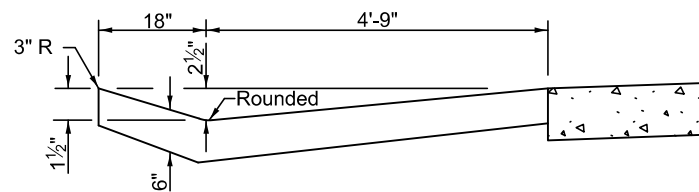
**QUANTITY**  
 Section B'-B' to B-B = 0.16 cu. yd./ft.  
 Section C-C to B'-B' + B'-B' to  
 A-A = 0.96 cu. yd.



**SECTION A-A**

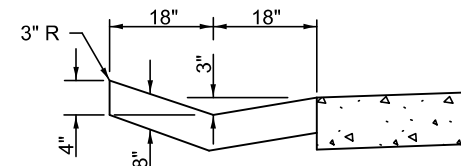


**SECTION B-B**

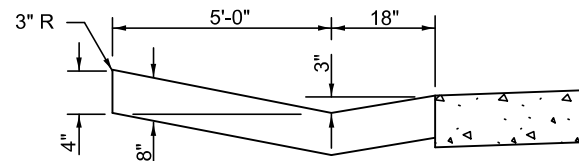


**SECTION C-C**

**INLET**



**SECTION A-A & C-C**



**SECTION B-B & B'-B'**

**ENTRANCE**

**NOTES**

This work shall consist of constructing a special Type A concrete gutter as specified herein, at the locations shown on the plans, and in accordance with the applicable portions of Section 606 of the Standard Specifications.

The proposed Concrete Gutter, Type A (Special) shall be constructed with the cross section shown on the details herein. The cross section for the Type A Gutter Special was specifically designed to:

- Maximize hydraulic capacity in the gutter section
- Minimize the entrance breakover between the Type A Gutter Entrance and the driveway pavement
- Improve ride quality through the Type A Gutter Entrance; therefore no changes in the gutter cross section will be allowed. In addition, all joints and reinforcing steel for Concrete Gutter, Type A (Special), shall conform to the details shown herein, the applicable details of Standard 606001, and the applicable portions of Section 606 of the Standard Specifications.

Concrete Gutter, Type A (Special) will be measured for payment in (feet) along the flow line of the gutter. Concrete inlets, entrances, and outlets along the gutter section will be measured for payment in place and the volume of concrete computed in (cubic yards).

This work will be paid for at the contract unit price per foot for CONCRETE GUTTER, TYPE A (SPECIAL) of the dimensions specified. Concrete inlets, entrances, and outlets along the gutter section will be paid for as CLASS SI CONCRETE (OUTLET).

Sub-Base Granular Material, Type B 4" shall be constructed under the Type A Gutter (Special) and Type A Gutter Entrance.

Gutter, gutter inlet, gutter outlet and gutter entrance shall be tied to the P.C.C. pavement at side streets in accordance with details for longitudinal construction joint shown on Standard 420001. Longitudinal joint tie bars shall be No. 6 at 24" centers.

Two 1-1/4" x 18" dowel bars shall be installed in all joints when the gutter is constructed adjacent to flexible pavement.

Note: All dimensions are in INCHES (millimeters) unless otherwise shown.

**DISTRICT 5 DETAIL NO. 60602700**

USER NAME = Justin.Cearlock	DESIGNED -	REVISED -
	DRAWN -	REVISED -
PLOT SCALE = \$\$CALES	CHECKED -	REVISED -
PLOT DATE = 4/29/2024	DATE -	REVISED -

**STATE OF ILLINOIS  
DEPARTMENT OF TRANSPORTATION**

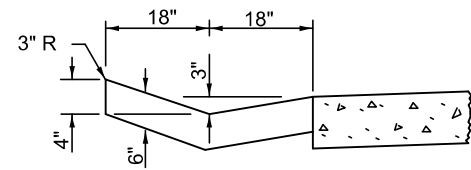
**CONCRETE CURB, TYPE A (SPECIAL)**

SCALE: SHEET 2 OF 3 SHEETS STA. TO STA.

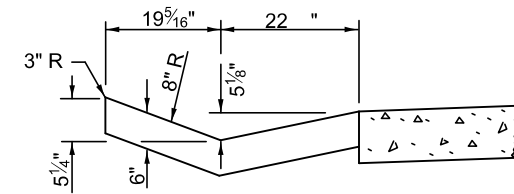
F.A. RTE.	SECTION	COUNTY	TOTAL SHEETS	SHEET NO.
CONTRACT NO.				
ILLINOIS FED. AID PROJECT				

MODEL: 60602700 Sheet 2  
FILE NAME: c:\pwworking\autocad\cadd\0872377\05\###\Sh-Detail\_60602700.dgn

MODEL: 60602700 Sheet 3  
 FILE NAME: c:\pwworking\autocad\cadd\0872377\05\###\Sh-Detail\_60602700.dgn



**SECTION A-A**

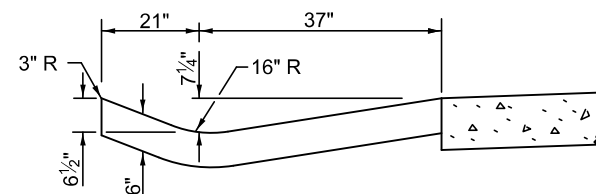


**SECTION B-B**

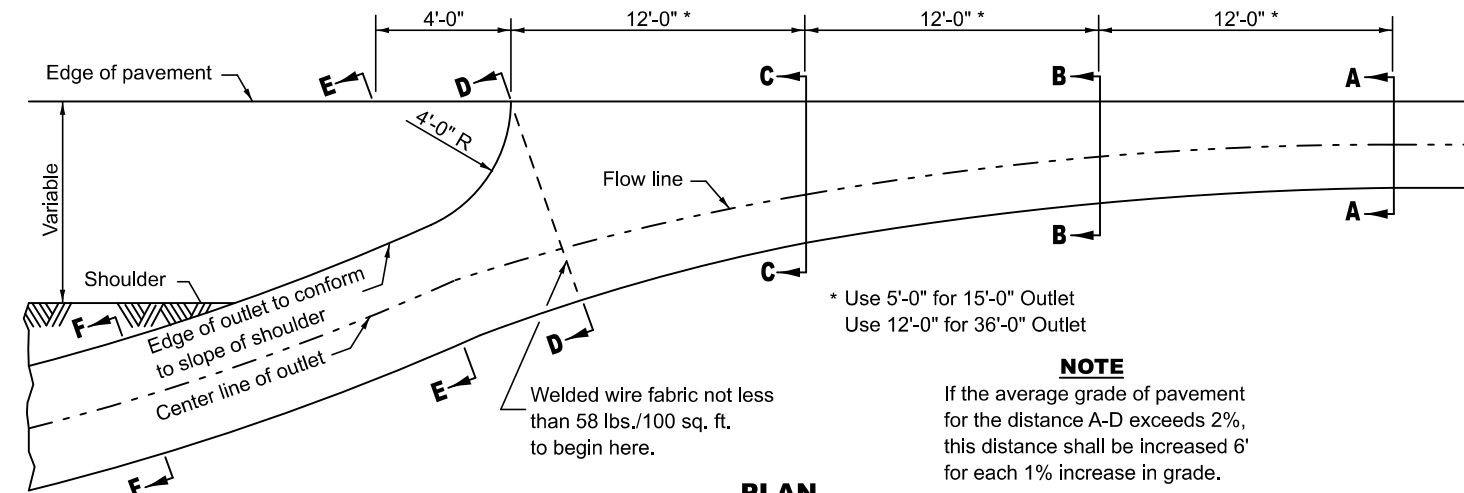
**QUANTITY**

\* For 15'-0" Outlet  
 Section A-A to Section E-E  
 and Curtain Wall = 1.65 cu. yd. Concrete  
 Section F-F = 0.079 cu. yd./ft.

\* For 36'-0" Outlet  
 Section A-A to Section E-E  
 and Curtain Wall = 3.53 cu. yd. Concrete  
 Section F-F = 0.079 cu. yd./ft.



**SECTION C-C**

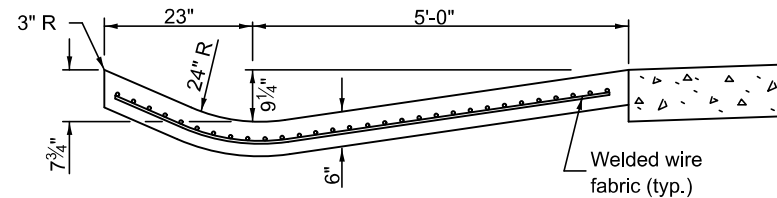


**PLAN**

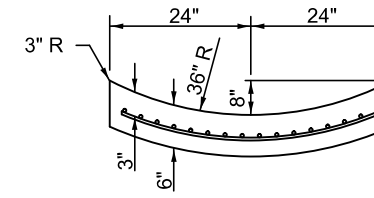
\* Use 5'-0" for 15'-0" Outlet  
 Use 12'-0" for 36'-0" Outlet

**NOTE**

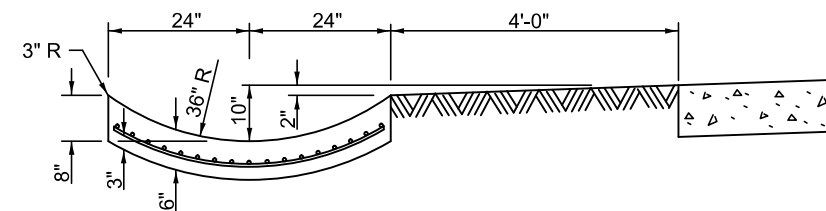
If the average grade of pavement for the distance A-D exceeds 2%, this distance shall be increased 6' for each 1% increase in grade.



**SECTION D-D**

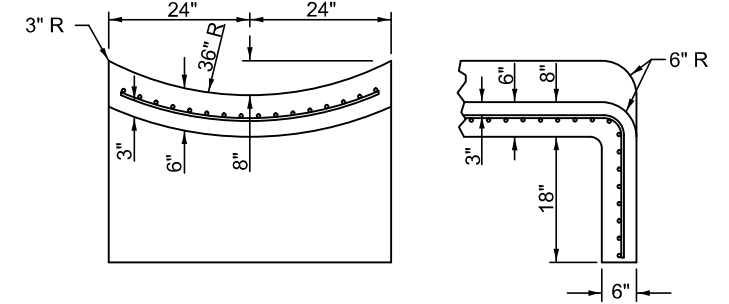


**SECTION F-F**



**SECTION E-E**

**OUTLET**



**SECTIONS AT END OF OUTLET**

**NOTES**

This work shall consist of constructing a special Type A concrete gutter as specified herein, at the locations shown on the plans, and in accordance with the applicable portions of Section 606 of the Standard Specifications.

The proposed Concrete Gutter, Type A (Special) shall be constructed with the cross section shown on the details herein. The cross section for the Type A Gutter Special was specifically designed to:

- Maximize hydraulic capacity in the gutter section
- Minimize the entrance breakover between the Type A Gutter Entrance and the driveway pavement
- Improve ride quality through the Type A Gutter Entrance; therefore no changes in the gutter cross section will be allowed. In addition, all joints and reinforcing steel for Concrete Gutter, Type A (Special), shall conform to the details shown herein, the applicable details of Standard 606001, and the applicable portions of Section 606 of the Standard Specifications.

Concrete Gutter, Type A (Special) will be measured for payment in (feet) along the flow line of the gutter. Concrete inlets, entrances, and outlets along the gutter section will be measured for payment in place and the volume of concrete computed in (cubic yards).

This work will be paid for at the contract unit price per foot for CONCRETE GUTTER, TYPE A (SPECIAL) of the dimensions specified. Concrete inlets, entrances, and outlets along the gutter section will be paid for as CLASS SI CONCRETE (OUTLET).

Sub-Base Granular Material, Type B 4" shall be constructed under the Type A Gutter (Special) and Type A Gutter Entrance.

Gutter, gutter inlet, gutter outlet and gutter entrance shall be tied to the P.C.C. pavement at side streets in accordance with details for longitudinal construction joint shown on Standard 420001. Longitudinal joint tie bars shall be No. 6 at 24" centers.

Two 1-1/4" x 18" dowel bars shall be installed in all joints when the gutter is constructed adjacent to flexible pavement.

Note: All dimensions are in INCHES (millimeters) unless otherwise shown.

**DISTRICT 5 DETAIL NO. 60602700**

USER NAME = Justin.Cearlock	DESIGNED -	REVISED -
	DRAWN -	REVISED -
PLOT SCALE = \$\$SCALE\$	CHECKED -	REVISED -
PLOT DATE = 4/29/2024	DATE -	REVISED -

**STATE OF ILLINOIS  
 DEPARTMENT OF TRANSPORTATION**

**CONCRETE CURB, TYPE A (SPECIAL)**

SCALE: SHEET 3 OF 3 SHEETS STA. TO STA.

F.A. RTE.	SECTION	COUNTY	TOTAL SHEETS	SHEET NO.
CONTRACT NO.				
ILLINOIS FED. AID PROJECT				