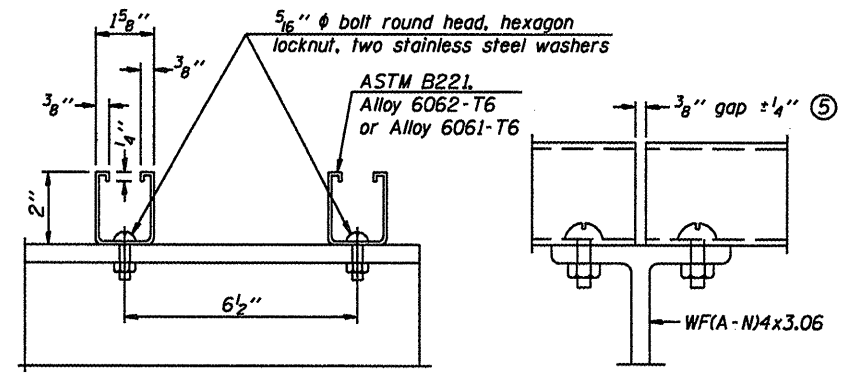
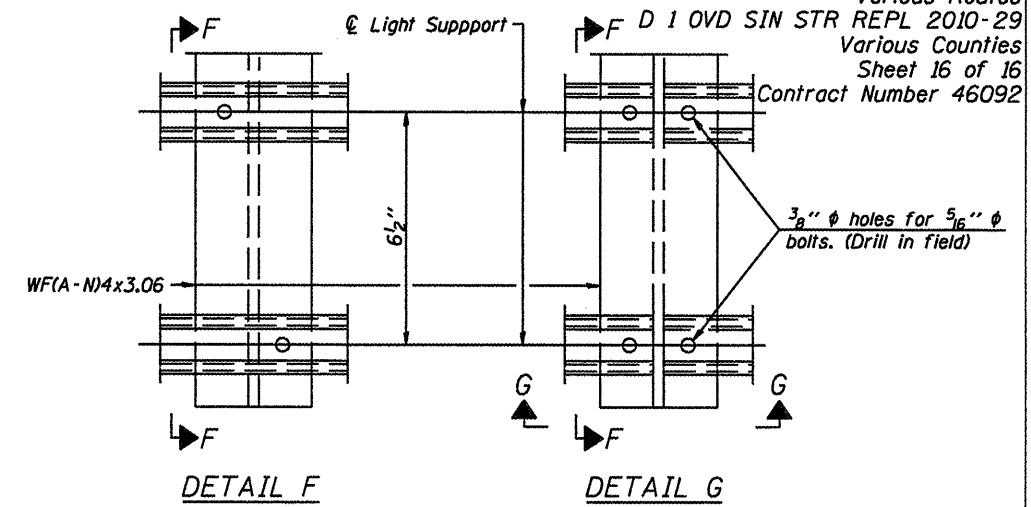


① Install standard force-fit end caps or weld  $\frac{1}{8}$ " end plates with  $\frac{1}{8}$ " c.f.w. and grind smooth. (All rail ends)

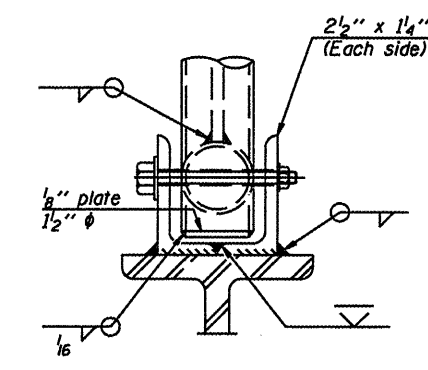
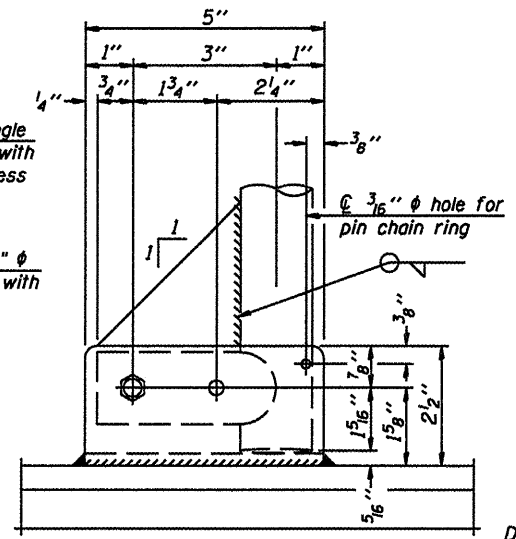
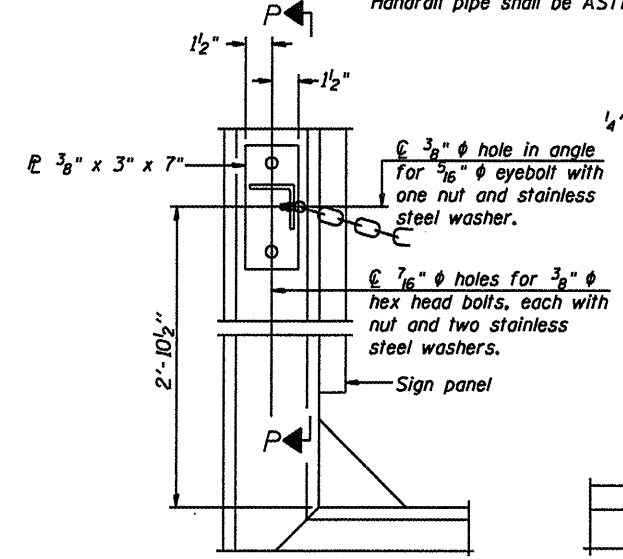
Fittings-ASTM B26, Alloy 356-T7 or  $\frac{1}{2}$ " aluminum pipe

② Horizontal handrail member shall be continuous thru fitting. Provide  $\frac{7}{16}$ " hole in fitting for  $\frac{3}{8}$ " bolt. Field drill  $\frac{1}{16}$ " hole in horizontal rail member. Provide locknut and two stainless steel washers for bolt. (Use  $\frac{5}{16}$ " eyebolts in  $\frac{1}{16}$ " holes on top rail at ends only.)

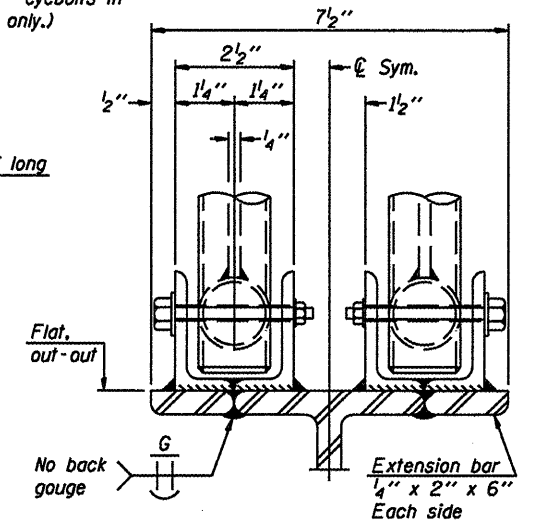


**LIGHTING FIXTURE MOUNTS (IF REQUIRED)**

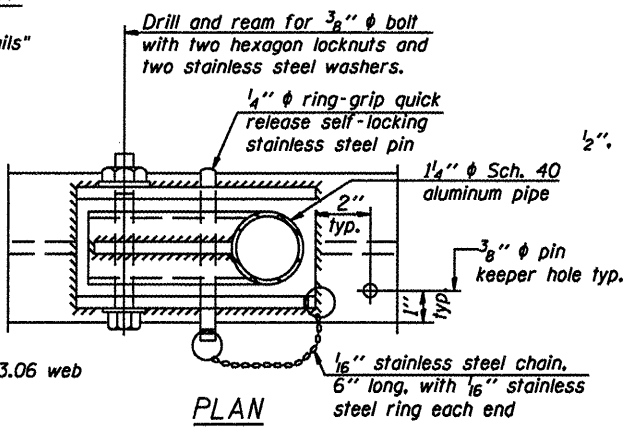
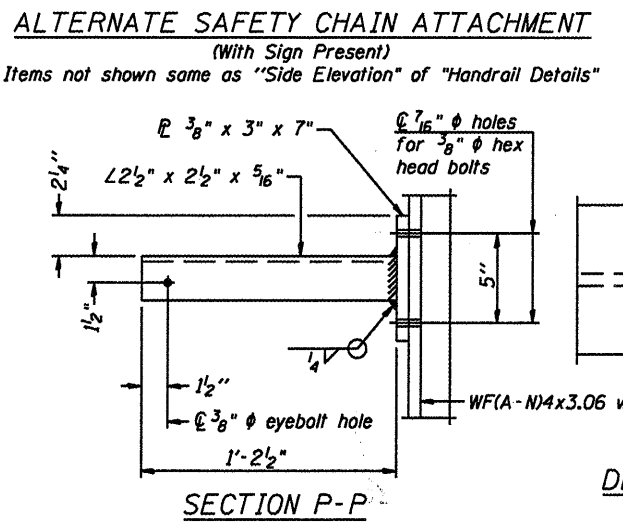
⑤ Field cut ends of light support channels shall be free of burrs or hazardous projections and coated with zinc-rich primer or equivalent.



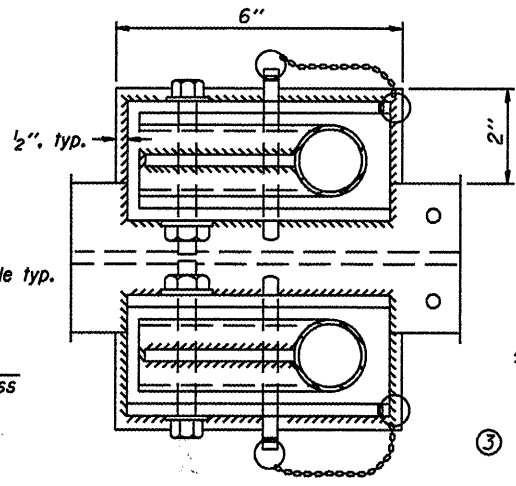
**FRONT ELEVATION**  
 Details not shown same as "ELEVATION" at right.



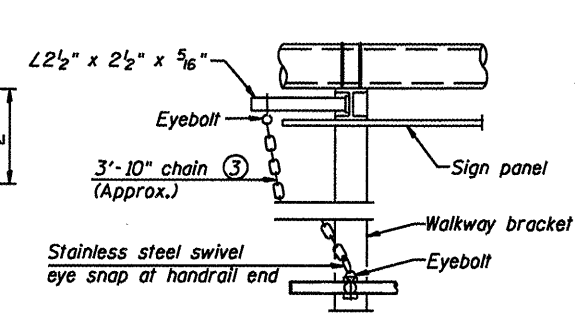
**ELEVATION AT HANDRAIL JOINT**  
 Details not shown same as "FRONT ELEVATION"



**DETAIL E HANDRAIL HINGE**

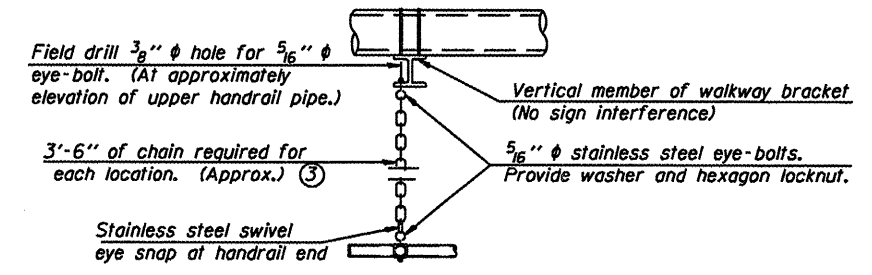


**PLAN AT HANDRAIL JOINT**  
 Details not shown same as "PLAN"



③  $\frac{3}{16}$ " Type 304L stainless steel chain, approximately 12 links per foot.

④ Extrusions may be used in lieu of the details shown, with approval of the Engineer.



**CANTILEVER SIGN STRUCTURES  
 HANDRAIL DETAILS  
 ALUMINUM TRUSS & STEEL POST**

District 1  
 Sign Structure  
 Repair and Replacement


NUMBER	REVISION	DATE