

**PROJECT LOCATED IN THE VILLAGE  
OF LAKE BLUFF**

**STATE OF ILLINOIS  
DEPARTMENT OF TRANSPORTATION  
DIVISION OF HIGHWAYS**

**PLANS FOR PROPOSED  
FEDERAL AID HIGHWAY**

**F.A.U. ROUTE 1238 (IL ROUTE 176) ROCKLAND ROAD  
OVER US ROUTE 41 (SKOKIE HWY)  
SECTION: 125SB-1-R**

**LAKE COUNTY**

**C-91-045-08**

**PPC DECK BEAM REPLACEMENT PROJECT**

**SN 049-0131**

**PROJECT: ACM-1238(011)**

FOR INDEX OF SHEETS, SEE SHEET NO. 2

**DESIGN DESIGNATION  
MINOR ARTERIAL (URBAN)**

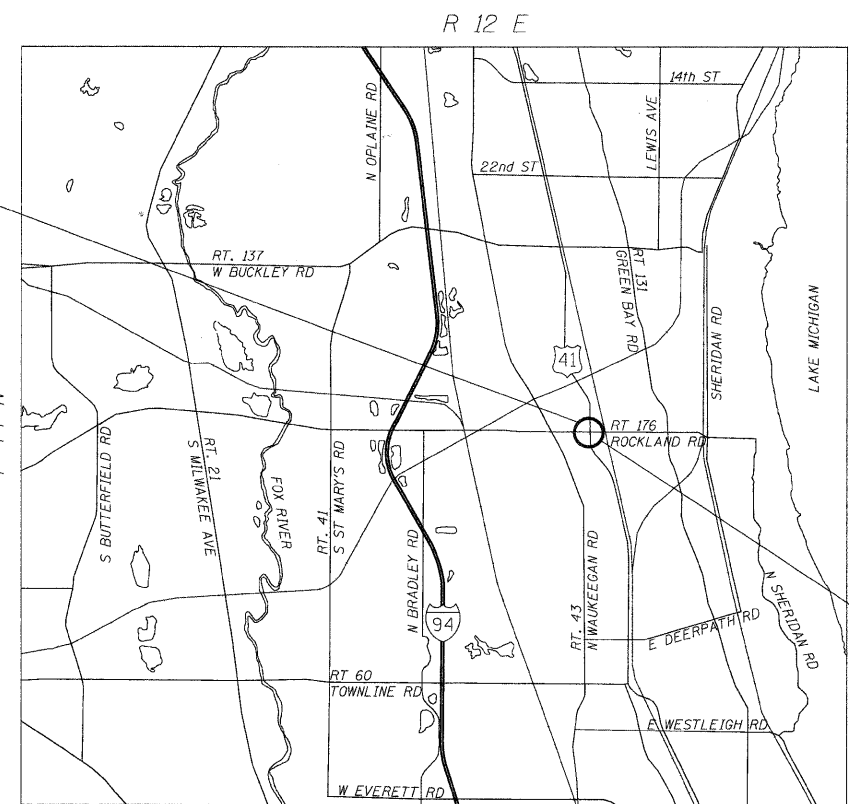
ADT 17,800 (2007)  
POSTED SPEED LIMIT 40 MPH  
STRUCTURE NO. 049-0131

F.A.U. RTE.	SECTION	COUNTY	TOTAL SHEETS	SHEET NO.
1238	125SB-1-R	LAKE	38	1
FED. ROAD DIST. NO.	ILLINOIS	CONTRACT NO. 60D57		

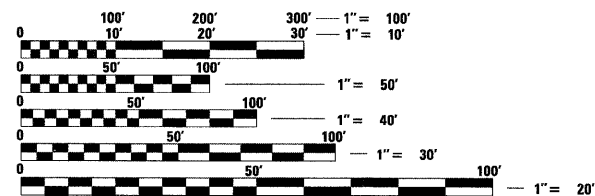
D-91-045-08



PROJECT BEGINS  
STA. 99+20



PROJECT ENDS  
STA. 102+90



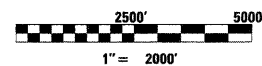
FULL SIZE PLANS HAVE BEEN PREPARED USING STANDARD ENGINEERING SCALES. REDUCED SIZED PLANS WILL NOT CONFORM TO STANDARD SCALES. IN MAKING MEASUREMENTS ON REDUCED PLANS, THE ABOVE SCALES MAY BE USED.

J.U.L.I.E.  
JOINT UTILITY LOCATION INFORMATION FOR EXCAVATION  
1-800-892-0123  
OR 811

PROJECT MANAGER: KIM HARVEY (847) 705-4055  
PROJECT ENGINEER: ERSKINE W. KLYCE (847) 705-4594

CONTRACT NO. 60D57

LOCATION MAP



NET AND GROSS LENGTH OF PROJECT = 370' = 0.070 MI

STATE OF ILLINOIS  
DEPARTMENT OF TRANSPORTATION  
DIVISION OF HIGHWAYS

SUBMITTED OCTOBER 16, 2009

Diana M. O'Keefe  
DEPUTY DIRECTOR OF HIGHWAYS, REGION ENGINEER

December 4, 2009  
Charles J. Ingersoll  
ENGINEER OF DESIGN AND ENVIRONMENT

December 4, 2009  
Christine M. Reed  
DIRECTOR OF HIGHWAYS, CHIEF ENGINEER

**PRINTED BY THE AUTHORITY  
OF THE STATE OF ILLINOIS**

**LOCO, INC.**  
CONSULTING ENGINEERS  
1560 WALL ST., SUITE 222  
NAPERVILLE, ILLINOIS 60563 PH: (630) 577-9100

STATE OF ILLINOIS  
REGISTERED PROFESSIONAL ENGINEER  
081-005150

WILLIAM H. BEYER  
REGISTERED PROFESSIONAL ENGINEER  
082-047827

Edwards 11/30/09  
Edwards 11/30/09