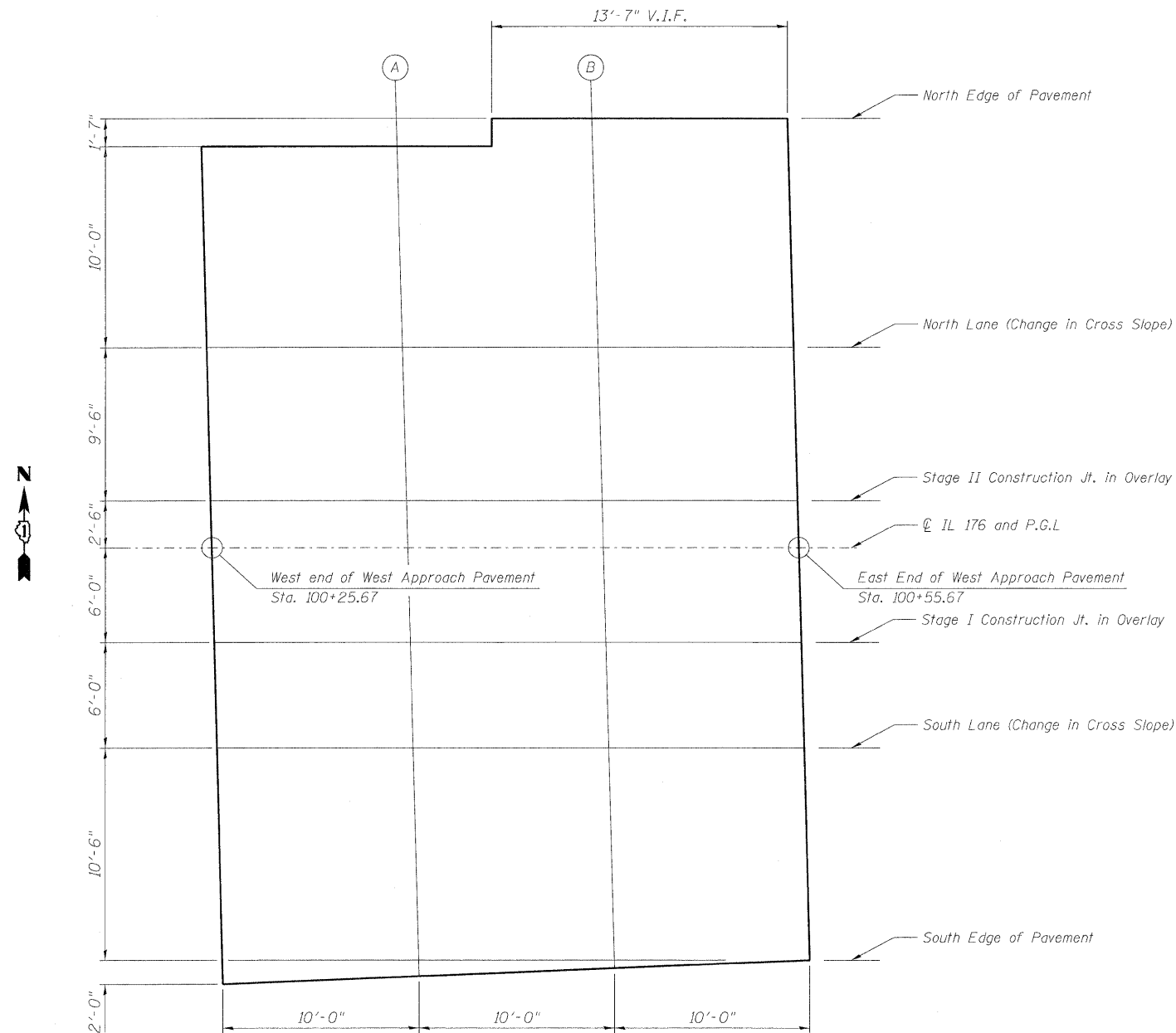


STATE OF ILLINOIS
DEPARTMENT OF TRANSPORTATION



PLAN

North Edge of Pavement

Location	Station	Offset	Theoretical Grade Elevations
W. End W. Appr Pvmt	100+25.03	-22.000'	100.16
A	100+35.03	-22.000'	100.25
B	100+45.03	-23.583'	100.30
E. End W. Appr Pvmt	100+55.03	-23.583'	100.38

Stage I Construction Joint in Overlay

Location	Station	Offset	Theoretical Grade Elevations
W. End W. Appr Pvmt	100+25.83	6.000'	100.46
A	100+35.83	6.000'	100.56
B	100+45.83	6.000'	100.64
E. End W. Appr Pvmt	100+55.83	6.000'	100.71

North Lane (Change in Cross Slope)

Location	Station	Offset	Theoretical Grade Elevations
W. End W. Appr Pvmt	100+25.35	-12.000'	100.37
A	100+35.35	-12.000'	100.46
B	100+45.35	-12.000'	100.55
E. End W. Appr Pvmt	100+55.35	-12.000'	100.62

South Lane (Change in Cross Slope)

Location	Station	Offset	Theoretical Grade Elevations
W. End W. Appr Pvmt	100+25.99	12.000'	100.37
A	100+35.99	12.000'	100.46
B	100+45.99	12.000'	100.55
E. End W. Appr Pvmt	100+55.99	12.000'	100.62

Stage II Construction Joint in Overlay

Location	Station	Offset	Theoretical Grade Elevations
W. End W. Appr Pvmt	100+25.60	-2.500'	100.51
A	100+35.60	-2.500'	100.61
B	100+45.60	-2.500'	100.69
E. End W. Appr Pvmt	100+55.60	-2.500'	100.77

South Edge of Pavement

Location	Station	Offset	Theoretical Grade Elevations
W. End W. Appr Pvmt	100+26.28	24.500	100.11
A	100+36.28	23.833	100.21
B	100+46.28	23.167	100.31
E. End W. Appr Pvmt	100+56.28	22.500	100.40

IL 176 and P.G.L.

Location	Station	Offset	Theoretical Grade Elevations
W. End W. Appr Pvmt	100+25.67	0.000'	100.55
A	100+35.67	0.000'	100.65
B	100+45.67	0.000'	100.73
E. End W. Appr Pvmt	100+55.67	0.000'	100.81

TOP OF WEST
APPROACH SLAB ELEVATIONS
STRUCTURE NO. 049-0131

DESIGNED -	SLV
CHECKED -	MJM
DRAWN -	SLV
CHECKED -	MJM

LONCO, INC.
CONSULTING ENGINEERS
1560 WALL ST. SUITE 222
NAPERVILLE, ILLINOIS 60563 PH: (630) 577-9100

SHEET NO. S5	F.A.U. RTE.	SECTION	COUNTY	TOTAL SHEETS	SHEET NO.
OF S18 SHEETS	1238	125SB-1-R	LAKE	38	18
D-91-045-08			CONTRACT NO. 60D57		
FED. ROAD DIST. NO. ILLINOIS FED. AID PROJECT					