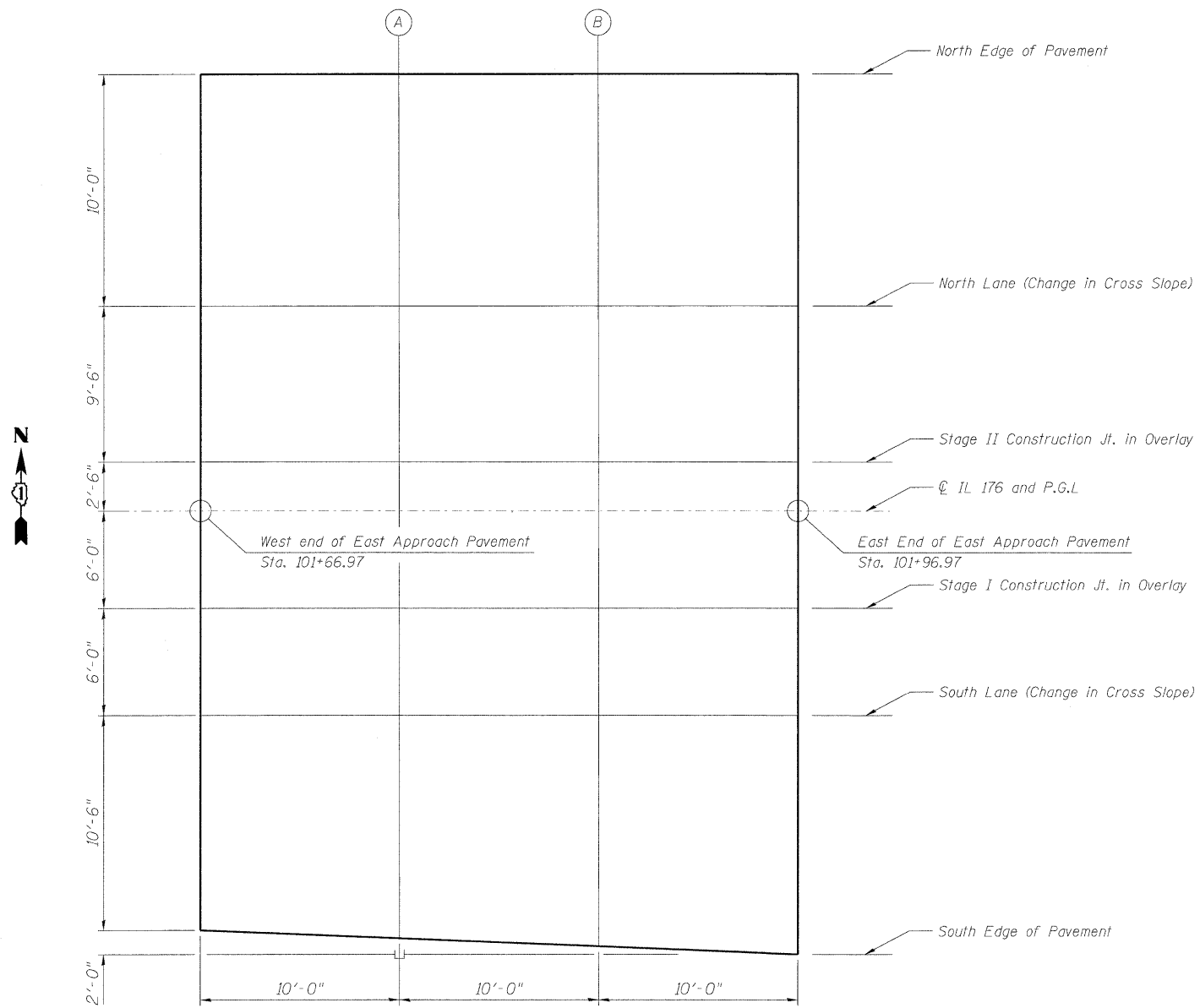


STATE OF ILLINOIS
DEPARTMENT OF TRANSPORTATION



PLAN

North Edge of Pavement

Location	Station	Offset	Theoretical Grade Elevations
W. End E. Appr Pvmt	101+66.97	-22.000'	100.18
A	101+76.97	-22.000'	100.05
B	101+86.97	-22.000'	99.90
E. End E. Appr Pvmt	101+96.97	-22.000'	99.74

Stage I Construction Joint in Overlay

Location	Station	Offset	Theoretical Grade Elevations
W. End E. Appr Pvmt	101+66.97	6.000'	100.48
A	101+76.97	6.000'	100.35
B	101+86.97	6.000'	100.20
E. End E. Appr Pvmt	101+96.97	6.000'	100.04

North Lane (Change in Cross Slope)

Location	Station	Offset	Theoretical Grade Elevations
W. End E. Appr Pvmt	101+66.97	-12.000'	100.39
A	101+76.97	-12.000'	100.25
B	101+86.97	-12.000'	100.10
E. End E. Appr Pvmt	101+96.97	-12.000'	99.95

South Lane (Change in Cross Slope)

Location	Station	Offset	Theoretical Grade Elevations
W. End E. Appr Pvmt	101+66.97	12.000'	100.39
A	101+76.97	12.000'	100.25
B	101+86.97	12.000'	100.10
E. End E. Appr Pvmt	101+96.97	12.000'	99.95

Stage II Construction Joint in Overlay

Location	Station	Offset	Theoretical Grade Elevations
W. End E. Appr Pvmt	101+66.97	-2.500'	100.54
A	101+76.97	-2.500'	100.40
B	101+86.97	-2.500'	100.25
E. End E. Appr Pvmt	101+96.97	-2.500'	100.10

South Edge of Pavement

Location	Station	Offset	Theoretical Grade Elevations
W. End E. Appr Pvmt	101+66.97	22.500'	100.17
A	101+76.97	23.167'	100.02
B	101+86.97	23.833'	99.86
E. End E. Appr Pvmt	101+96.97	24.500'	99.69

Centerline of IL 176 and P.G.L.

Location	Station	Offset	Theoretical Grade Elevations
W. End E. Appr Pvmt	101+66.97	0.000'	100.58
A	101+76.97	0.000'	100.44
B	101+86.97	0.000'	100.29
E. End E. Appr Pvmt	101+96.97	0.000'	100.14

TOP OF EAST
APPROACH SLAB ELEVATIONS
STRUCTURE NO. 049-0131

DESIGNED	SLV
CHECKED	MJM
DRAWN	SLV
CHECKED	MJM

LONCO, INC.
CONSULTING ENGINEERS
1560 WALL ST, SUITE 222
NAPERVILLE, ILLINOIS 60563 PH: (630) 577-9100

SHEET NO. S6 OF S18 SHEETS	F.A.U. RTE.	SECTION	COUNTY	TOTAL SHEETS	SHEET NO.
	1238	125SB-1-R	LAKE	38	19
D-91-045-08			CONTRACT NO. 60D57		
FED. ROAD DIST. NO. - ILLINOIS FED. AID PROJECT					