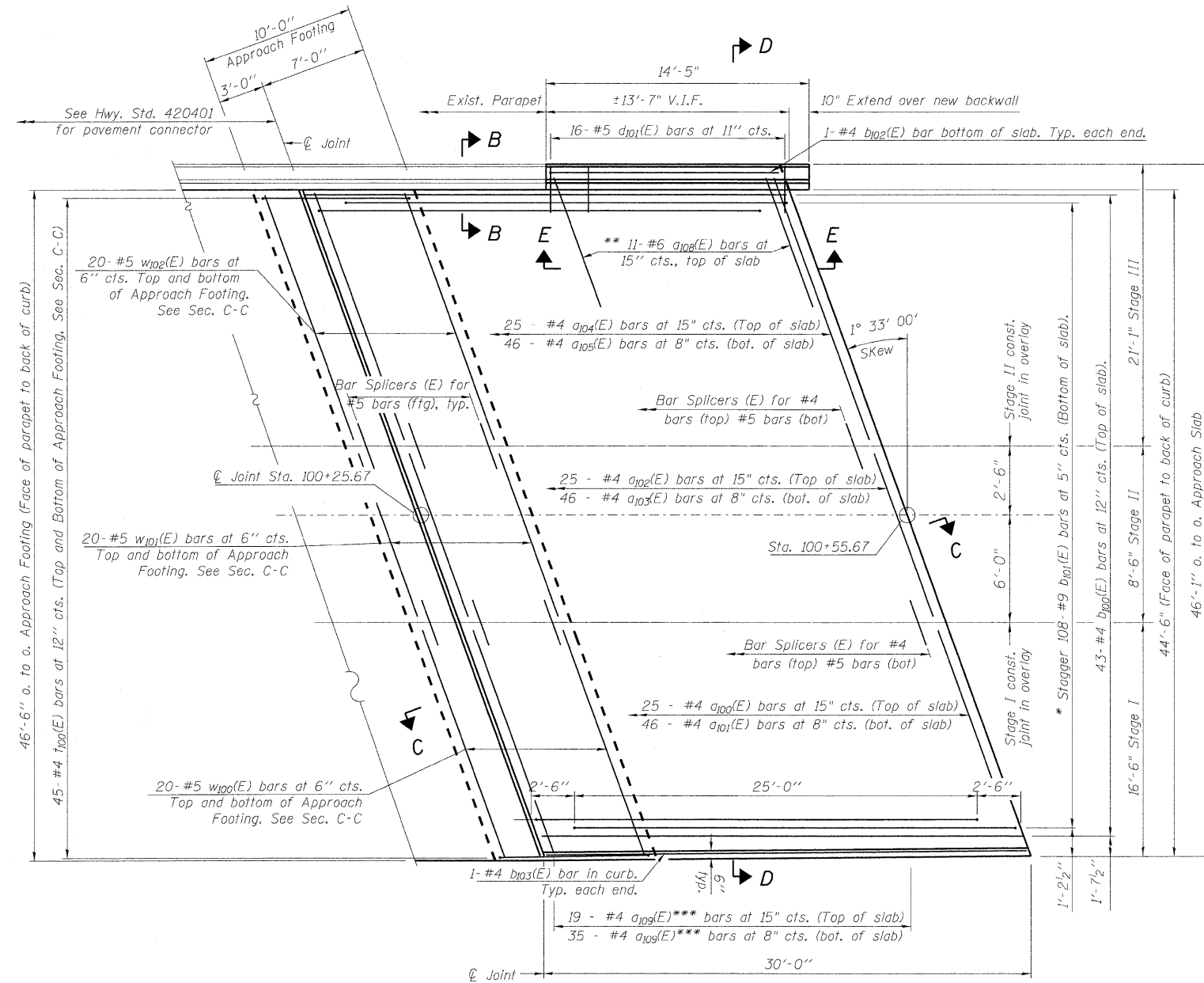


STATE OF ILLINOIS  
DEPARTMENT OF TRANSPORTATION

NOTES

See sheet S12 of S18 for Sections C-C, D-D, F-F, View E-E and Bill of Material.  
No parapet to be constructed on east approach slab.  
All a(E) and w(E) bar spacings measured parallel to  $\perp$  Rdwy.

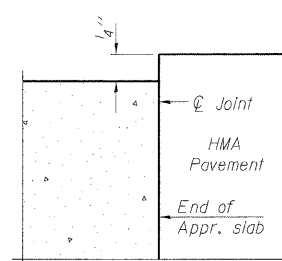


WEST APPROACH SLAB PLAN

- \* Tilt #9 b101(E) bars as required to maintain clearance.
- \*\* Alternate with a104(E) bars, typ. each parapet.
- \*\*\* Lap a109(E) with a100(E) & a101(E) to fill in voids due to widening of approach slab from 44.5' to 46.5'.

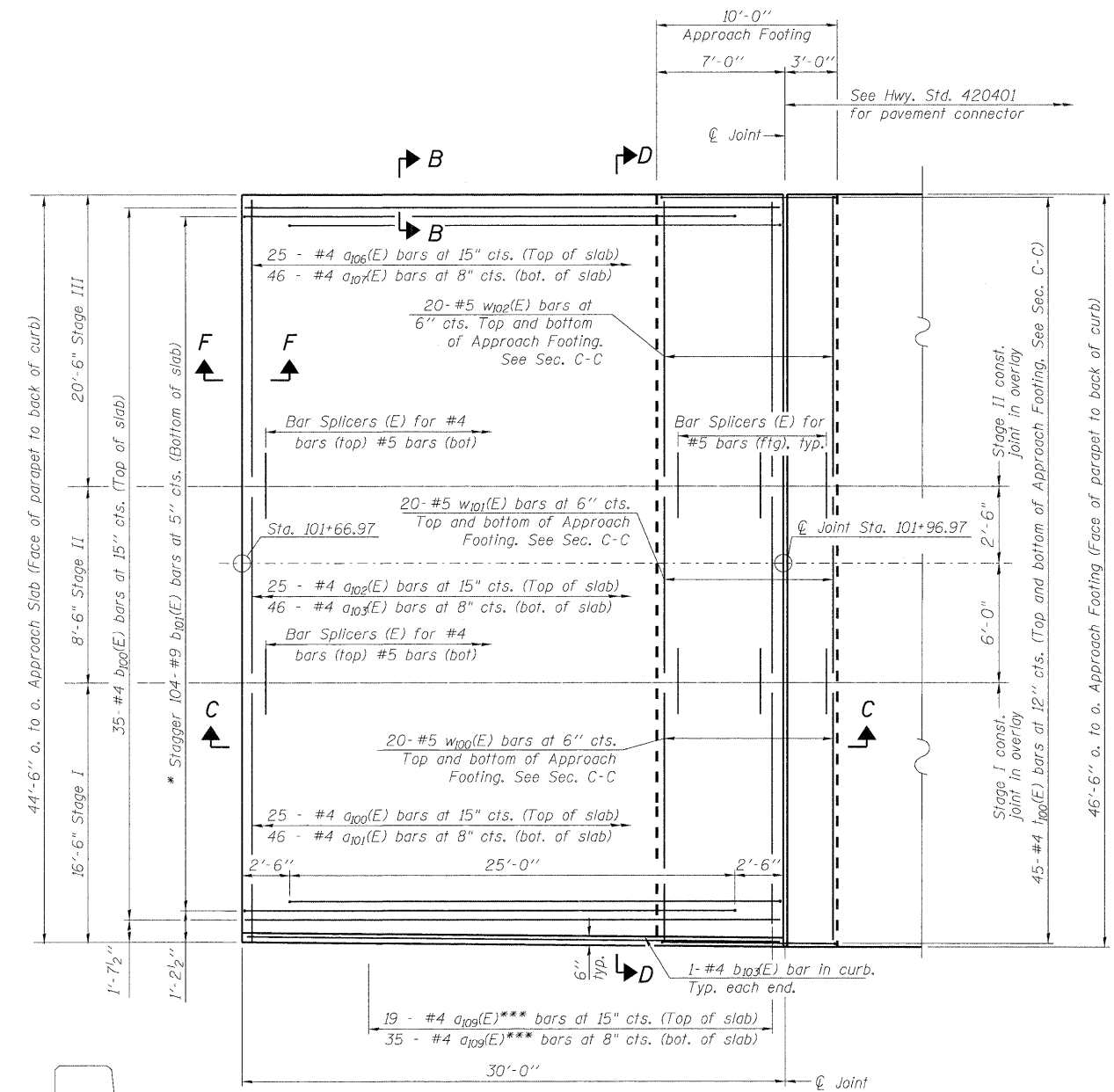
MIN BAR LAP

#4 Bar = 1'-8"



FLEXIBLE PAVEMENT

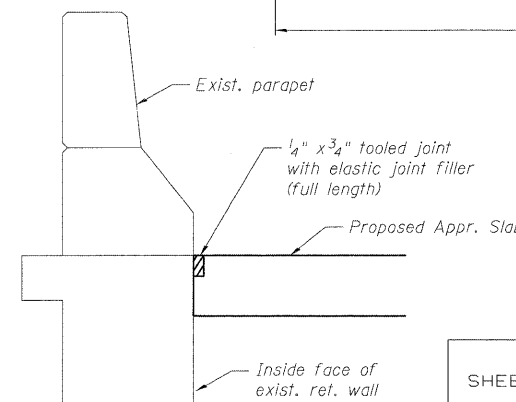
DETAIL A



EAST APPROACH SLAB PLAN

\* Tilt #9 b101(E) bars as required to maintain clearance.

\*\*\* Lap a109(E) with a100(E) & a101(E) to fill in voids due to widening of approach slab from 44.5' to 46.5'.



SECTION B-B

DESIGNED	SLV
CHECKED	MJM
DRAWN	SLV
CHECKED	MJM

**LONCO, INC.**  
CONSULTING ENGINEERS  
1560 WALL ST. SUITE 222  
NAPERVILLE, ILLINOIS 60563 PH: (630) 577-9100

(Sheet 1 of 2)  
**BRIDGE APPROACH SLAB DETAILS**  
**STRUCTURE NO. 049-0131**

SHEET NO. S11 OF S18 SHEETS	F.A.U. RTE.	SECTION	COUNTY	TOTAL SHEETS	SHEET NO.
	1238	125SB-1-R	LAKE	38	24
D-91-045-08			CONTRACT NO. 60D57		
FED. ROAD DIST. NO. ILLINOIS FED. AID PROJECT					