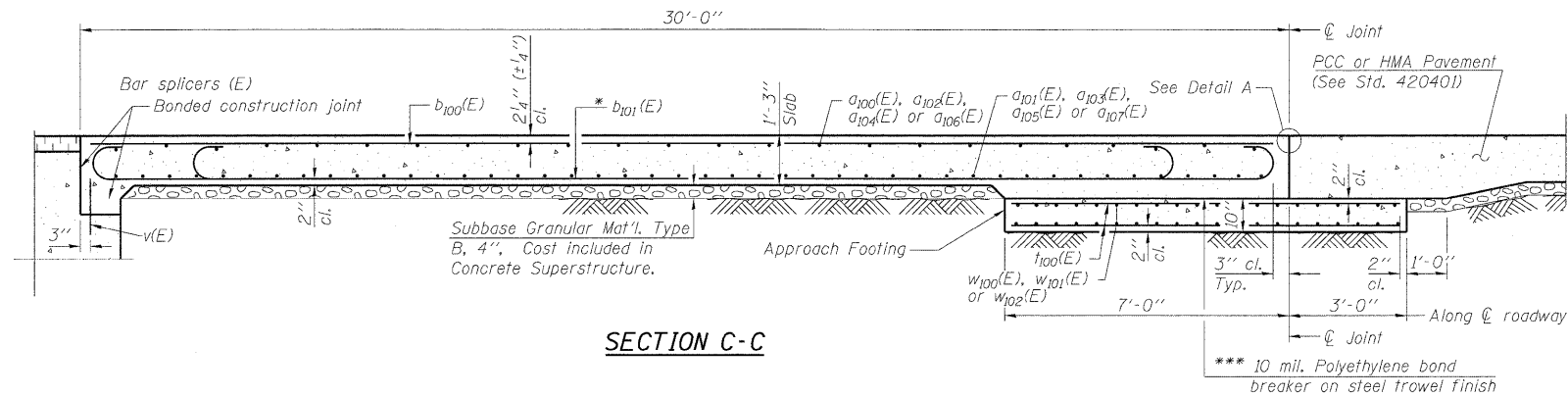
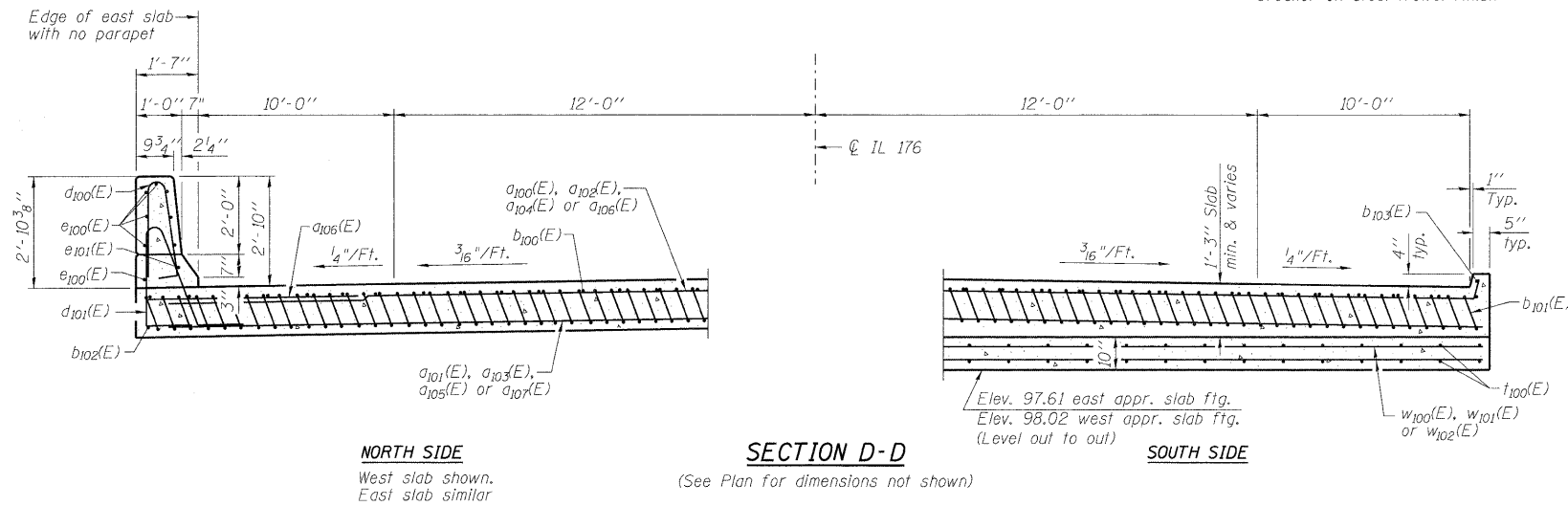


STATE OF ILLINOIS
DEPARTMENT OF TRANSPORTATION

Notes:
See sheet S11 of S18 for Detail A and View B-B.
Approach slab and parapet concrete shall be paid for as Concrete Superstructure.
Approach footing concrete shall be paid for as Concrete Structures.
Reinforcement shall be paid for as Reinforcement Bars, Epoxy Coated.
For v(E) bar details, see sheet S15 of S18.
The approach footing maximum applied service bearing pressure (Qmax) = 2.0 ksf.
For bar splicer details, see sheet S18 of S18.
Cost of excavation for approach footing included with Concrete Structures.



SECTION C-C



NORTH SIDE

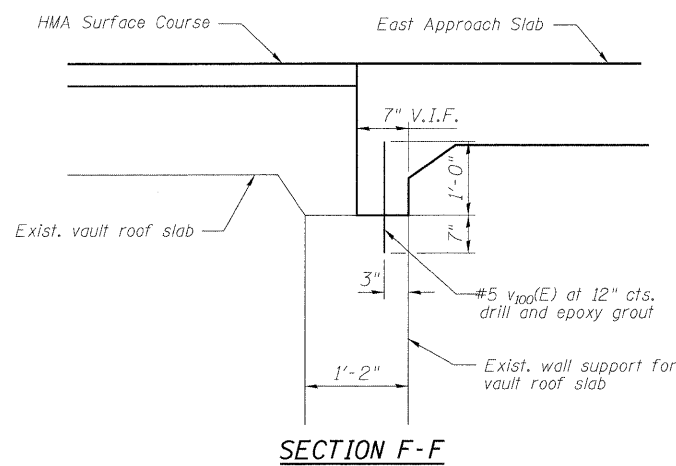
West slab shown.
East slab similar

SECTION D-D

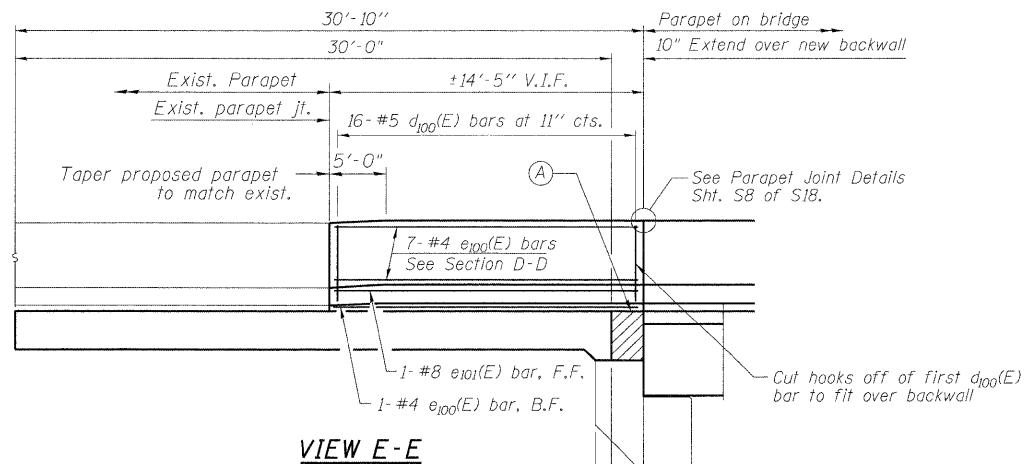
(See Plan for dimensions not shown)

SOUTH SIDE

* Till #9 b1(E) bars as required to maintain clearance.
*** Cost included with Concrete Superstructure.

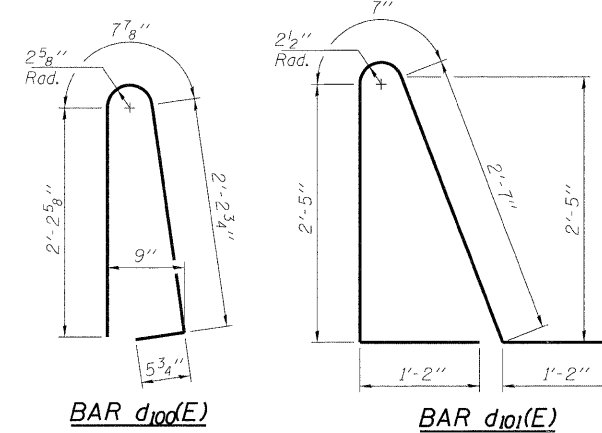


SECTION F-F



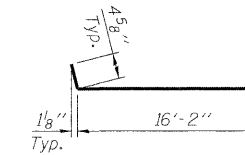
VIEW E-E

(A) Unbonded construction joint on top of abutment backwalls. Field cut hooks off first d101(E) bar to fit over backwall

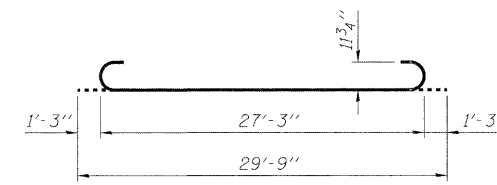


BAR d100(E)

BAR d101(E)



BAR a100(E)



BAR b101(E)

TWO APPROACHES
BILL OF MATERIAL

Bar	No.	Size	Length	Shape
a100(E)	50	#4	16'-7"	
a101(E)	92	#5	16'-2"	
a102(E)	50	#4	8'-0"	
a103(E)	92	#5	8'-0"	
a104(E)	25	#4	20'-7"	
a105(E)	46	#5	20'-7"	
a106(E)	25	#4	20'-0"	
a107(E)	46	#5	20'-0"	
a108(E)	11	#6	6'-0"	
a109(E)	108	#4	4'-0"	
b100(E)	78	#4	29'-8"	
b101(E)	212	#9	29'-9"	
b102(E)	1	#4	14'-1"	
b103(E)	2	#4	29'-6"	
d100(E)	16	#5	5'-7"	
d101(E)	16	#5	7'-11"	
e100(E)	8	#4	30'-4"	
e101(E)	1	#8	30'-4"	
f100(E)	180	#4	9'-6"	
w100(E)	45	#5	1'-7"	
w101(E)	80	#5	17'-8"	
w102(E)	80	#5	8'-0"	
w103(E)	80	#5	19'-8"	
Concrete Superstructure		Cu. Yd.	129	
Concrete Structures		Cu. Yd.	29	
Reinforcement Bars, Epoxy Coated		Pound	34660	
Bar Splicers		Each	444	

DESIGNED -	SLV
CHECKED -	MJM
DRAWN -	SLV
CHECKED -	MJM

LONGO, INC.
CONSULTING ENGINEERS
1560 WALL ST, SUITE 222
NAPERVILLE, ILLINOIS 60563 PH: (630) 577-9100

(Sheet 2 of 2)
BRIDGE APPROACH SLAB DETAILS
STRUCTURE NO. 049-0131

SHEET NO. S12 OF S18 SHEETS	F.A.U. RTE.	SECTION	COUNTY	TOTAL SHEETS	SHEET NO.
	1238	125SB-1-R	LAKE	38	25
	D-91-045-08			CONTRACT NO. 60D57	
FED. ROAD DIST. NO. _		ILLINOIS		FED. AID PROJECT	