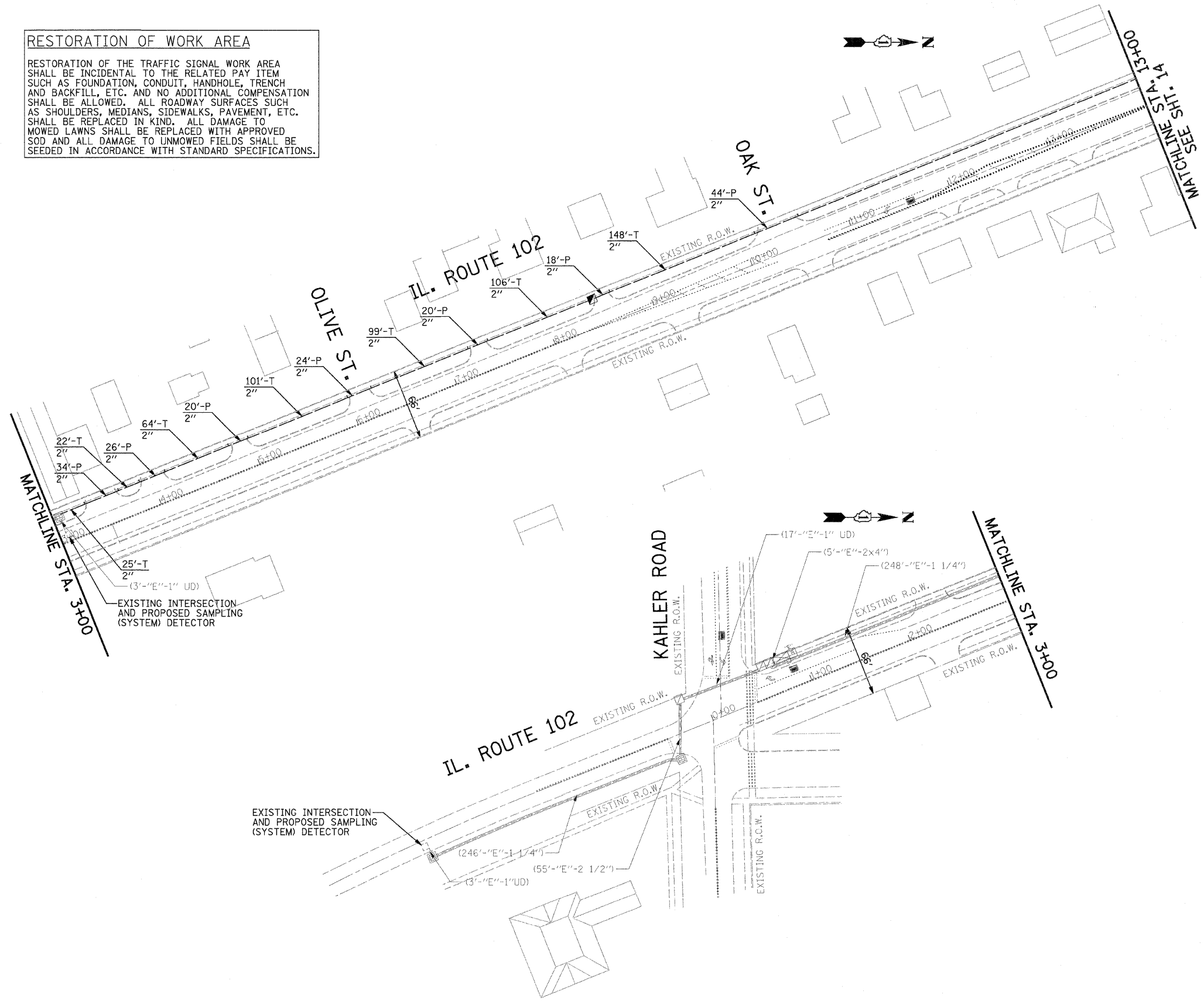


INTERCONNECT PLAN LEGEND

	EXISTING	PROPOSED
CONTROLLER		
HANDHOLE		
DOUBLE HANDHOLE		
HEAVY DUTY HANDHOLE		
G.S. CONDUIT IN TRENCH (T) OR PUSHED (P)		
DETECTOR LOOP		
UNIT DUCT	UD	UD
SYSTEM	S	S
INTERSECTION	I	IP
UNINTERRUPTIBLE POWER SUPPLY		
STAINLESS STEEL JUNCTION BOX		

RESTORATION OF WORK AREA
 RESTORATION OF THE TRAFFIC SIGNAL WORK AREA SHALL BE INCIDENTAL TO THE RELATED PAY ITEM SUCH AS FOUNDATION, CONDUIT, HANDHOLE, TRENCH AND BACKFILL, ETC. AND NO ADDITIONAL COMPENSATION SHALL BE ALLOWED. ALL ROADWAY SURFACES SUCH AS SHOULDERS, MEDIANS, SIDEWALKS, PAVEMENT, ETC. SHALL BE REPLACED IN KIND. ALL DAMAGE TO MOWED LAWNS SHALL BE REPLACED WITH APPROVED SOD AND ALL DAMAGE TO UNMOWED FIELDS SHALL BE SEEDED IN ACCORDANCE WITH STANDARD SPECIFICATIONS.



FILE NAME =	USER NAME = (1224_user)	DESIGNED - LC	REVISED -	STATE OF ILLINOIS DEPARTMENT OF TRANSPORTATION	INTERCONNECT PLAN IL. ROUTE 102 FROM IL. ROUTE 53 TO KAHLER RD.	F.A.P. RTE.	SECTION	COUNTY	TOTAL SHEETS	SHEET NO.	
P:\P-00\1224\Task 9\DWG\Sheets\15-1224-S-T9-INTERCONNECT-03.dgn	DRAWN - BID/LC	REVISED -	REVISED -			631/846	2008-077TS	WILL	18	15	
PLOT SCALE = 50.0000' / IN.	CHECKED - ER	REVISED -	REVISED -			CONTRACT NO. 60F80					
PLOT DATE = 10/14/2009	DATE - 9/17/2009	REVISED -	REVISED -			SCALE: 1"=20'	SHEET NO. 3 OF 3 SHEETS	STA.	TO STA.	FED. ROAD DIST. NO.	ILLINOIS FED. AID PROJECT

