

STATE OF ILLINOIS
DEPARTMENT OF TRANSPORTATION
DIVISION OF HIGHWAYS

**PROPOSED
HIGHWAY PLANS**
FAP ROUTE 350: IL 50 (CICERO AVE)
SECTION: 50-1 VB-1-BR
OVER BRC RR (SN 016-2512, -2513)
BRIDGE JOINT RECONSTRUCTION AND
SUBSTRUCTURE REPAIRS
COOK COUNTY
C-91-789-09

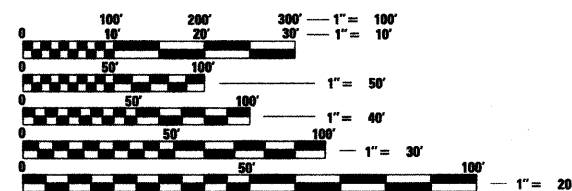
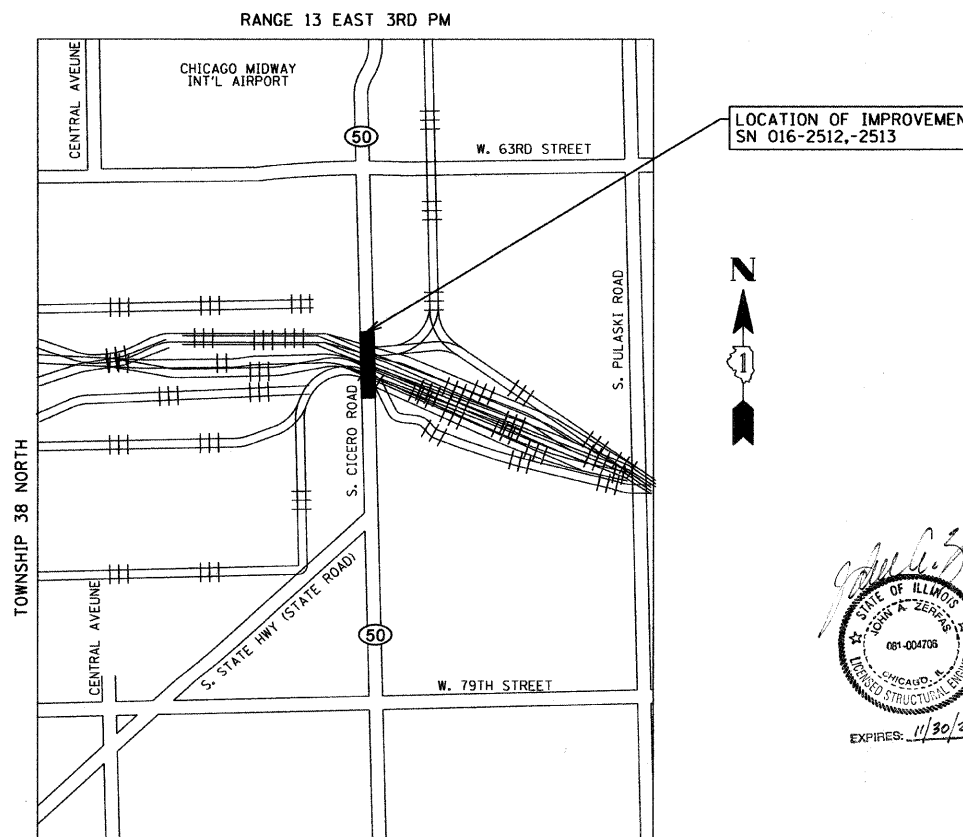
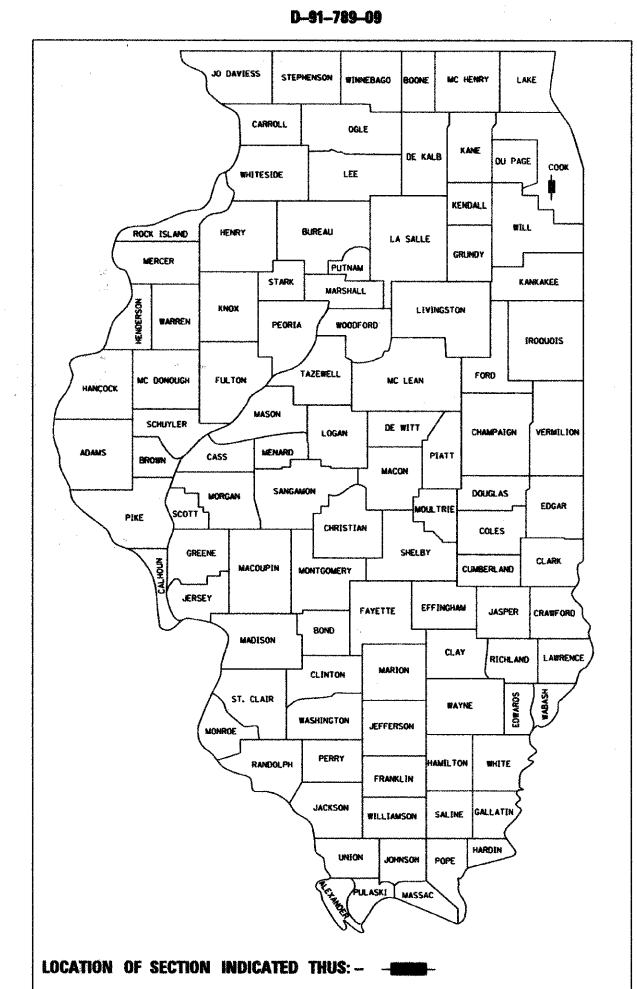
F.A.P. RTE.	SECTION	COUNTY	TOTAL SHEETS	SHEET NO.
350	50-1 VB-1-BR	COOK	33	1
FED. ROAD DIST. NO.	ILLINOIS	CONTRACT NO. 60H76		

FOR INDEX OF SHEETS, SEE SHEET NO. 2

TRAFFIC DATA

EXISTING ADT = 47,900 TO 61,000 (2007)
POSTED SPEED LIMIT = 35 MPH

THE PROJECT IS LOCATED IN THE CITY OF CHICAGO AND IN THE VILLAGE OF BEDFORD PARK.



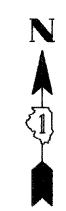
FULL SIZE PLANS HAVE BEEN PREPARED USING STANDARD ENGINEERING SCALES. REDUCED SIZED PLANS WILL NOT CONFORM TO STANDARD SCALES. IN MAKING MEASUREMENTS ON REDUCED PLANS, THE ABOVE SCALES MAY BE USED.

J.U.L.I.E.
JOINT UTILITY LOCATION INFORMATION
FOR EXCAVATION 1-800-892-0123 OR 811
D.I.G.E.R. FOR EXCAVATION IN THE
CITY OF CHICAGO AT 1-312-744-7000

PROJECT ENGINEER: ROBERT BORO (IDOT) (847) 705-4178
PROJECT MANAGER: KEN ENG (IDOT) 847-705-4247

CONTRACT NO. 60H76

GROSS & NET LENGTH OF IMPROVEMENT: 669 FT (0.13 MILES)



GRäEF
8501 W. Higgins Road, Suite 280
Chicago, Illinois 60631
(773) 399-0112

STATE OF ILLINOIS
DEPARTMENT OF TRANSPORTATION
DIVISION OF HIGHWAYS

SUBMITTED DECEMBER 16, 20 09

Diana M. O'Keefe
DEPUTY DIRECTOR OF HIGHWAYS, REGION ENGINEER

December 4, 20 09
Charles G. Ingersoll
ENGINEER OF DESIGN AND ENVIRONMENT

December 4, 20 09
Christine M. Reed
DIRECTOR OF HIGHWAYS, CHIEF ENGINEER

PRINTED BY THE AUTHORITY
OF THE STATE OF ILLINOIS