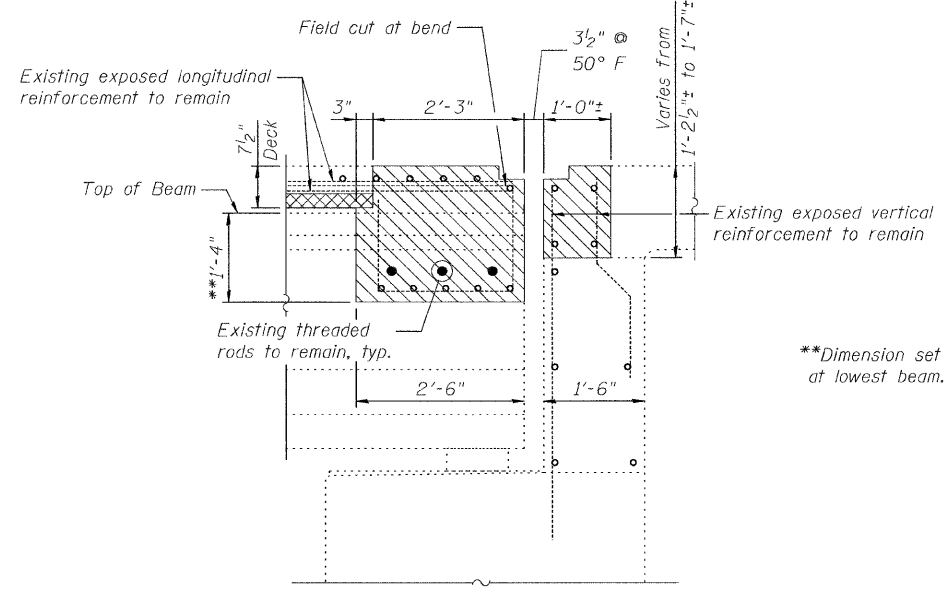
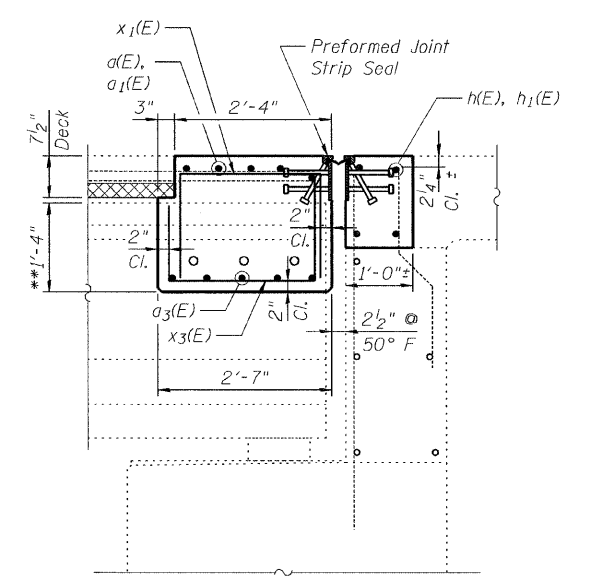


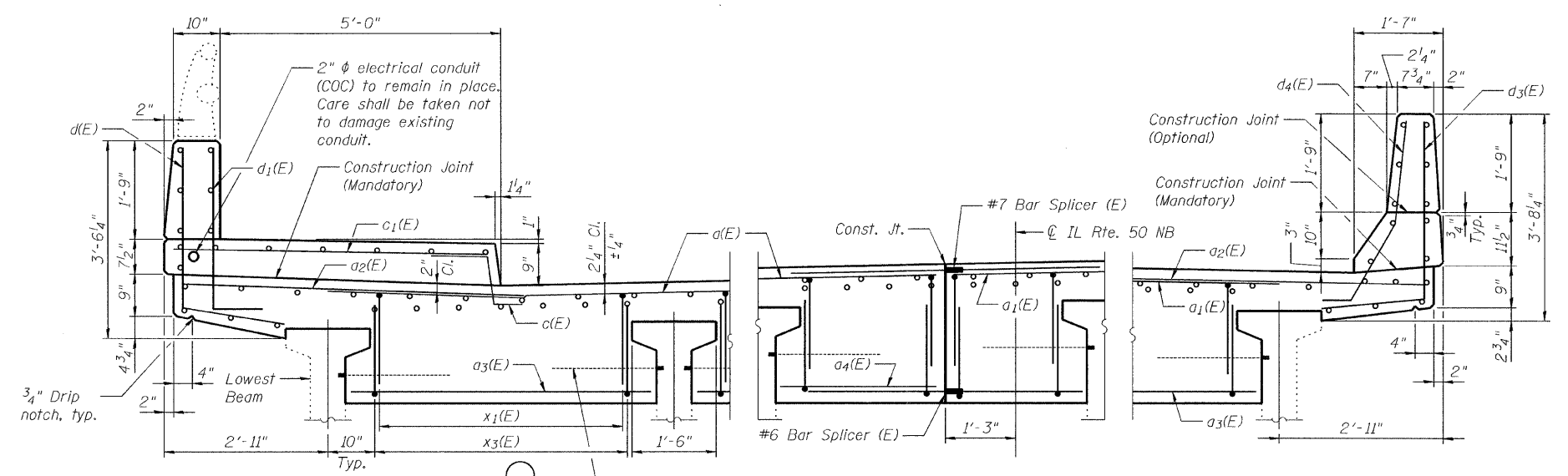
EXP. JOINT PLAN AT NB, SOUTH ABUTMENT



**SECTION A-A
CONCRETE REMOVAL @ NB, S. ABUT.**
(Horiz. dimensions at Rt. L's)



**SECTION A-A
CONCRETE REPLACEMENT @ NB, S. ABUT.**
(Horiz. dimensions at Rt. L's)



SIDEWALK SECTION (Looking South)
CENTER SECTION (Looking South)
CURB SECTION (Looking South)

DESIGNED	E.E.J.
CHECKED	J.A.Z.
DRAWN	E.E.J.
CHECKED	J.A.Z.

- Notes:
- Existing reinforcement shall be cleaned and incorporated into the new construction.
 - See Sheet 10 of 16 for Bill of Material.

- LEGEND**
- Concrete Removal
 - Exist. PPC Deck Plank, 2 1/2" thick

**EXPANSION JOINT
NB SOUTH ABUTMENT
IL 50 (CICERO AVE) OVER BRC R.R.,
F.A.P. 350, SECTION 50-1 VB-1-BR
COOK COUNTY**

S.N. 016-2512 (S.B.), 016-2513 (N.B.)
DATE: 10-23-09
GRAEF
CHICAGO ILLINOIS