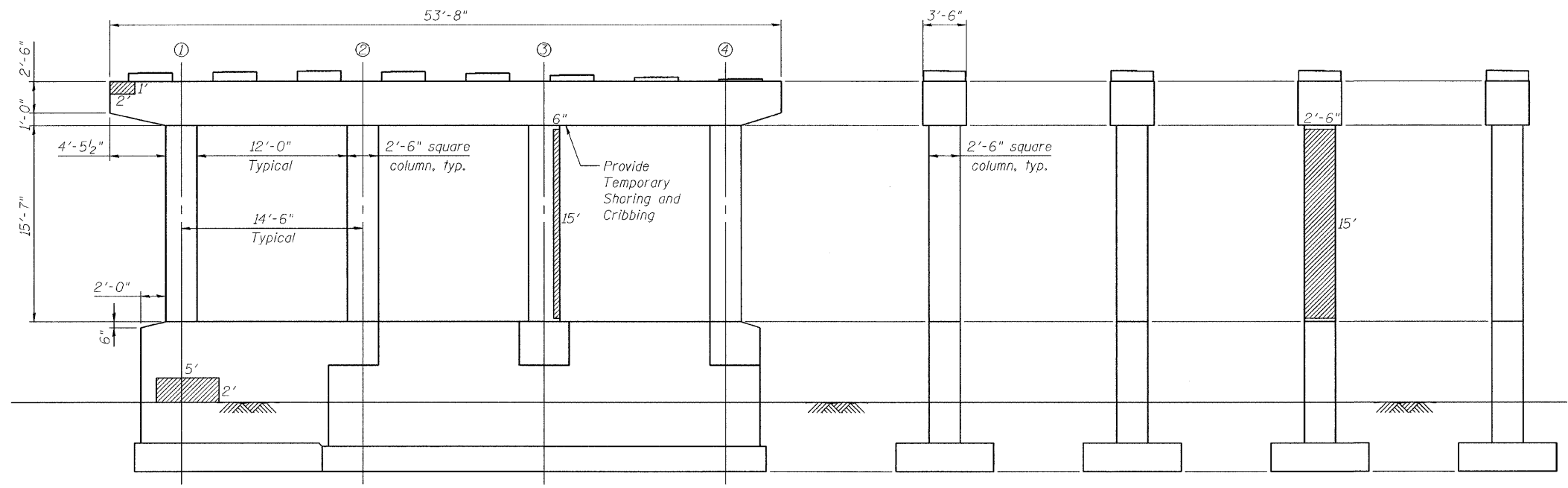


Contract # 60H76



SB PIER 3 ELEVATION
(Looking South)

COLUMN 1
(Looking East)

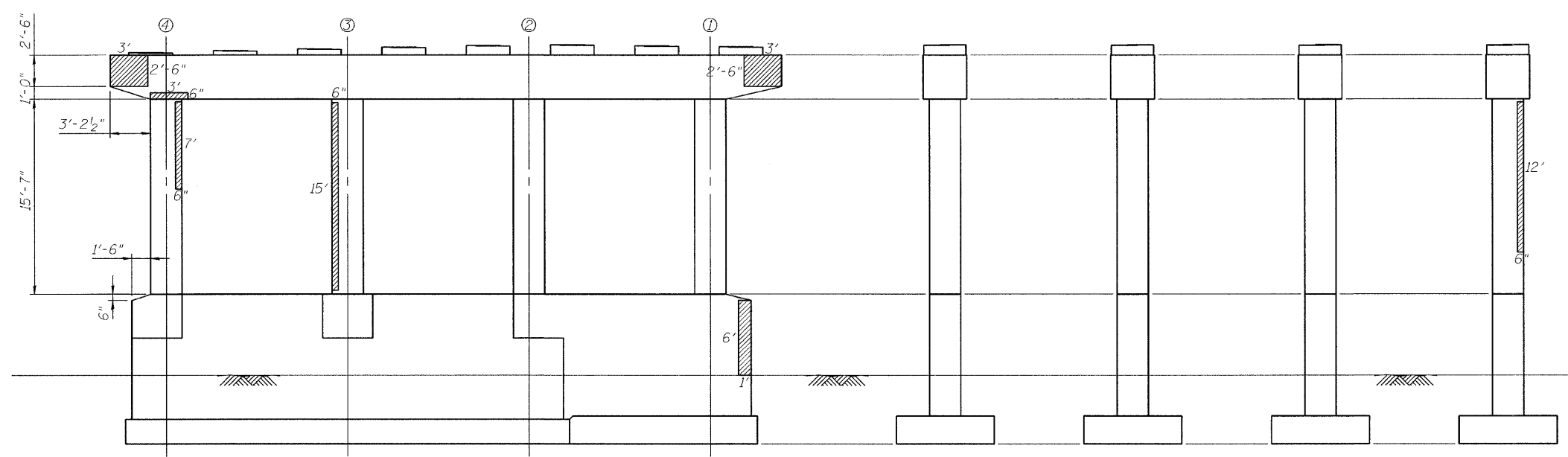
COLUMN 2
(Looking East)

COLUMN 3
(Looking East)

COLUMN 4
(Looking East)

SB PIER 3 REACTIONS
(BEAM LOADS ONLY)

| | Span 3 | Span 4 |
|------------------------|--------|--------|
| R _{DL} (k) | 36.8 | 36.8 |
| R _{sDL} (k) | 5.0 | 4.9 |
| R _{LL} (k) | 33.5 | 33.6 |
| R _I (k) | 8.6 | 8.7 |
| R _{Total} (k) | 83.9 | 84.0 |



SB PIER 3 ELEVATION
(Looking North)

COLUMN 4
(Looking West)

COLUMN 3
(Looking West)

COLUMN 2
(Looking West)

COLUMN 1
(Looking West)

BILL OF MATERIAL

| Item | Unit | Quantity |
|--|---------|----------|
| Structural Repair of Concrete (Depth Equal to or Less than 5") | Sq. Ft. | 97 |

LEGEND

- Structural Repair of Concrete (Depth equal to or less than 5")
- Column Number

| | |
|----------|--------|
| DESIGNED | E.E.J. |
| CHECKED | J.A.Z. |
| DRAWN | E.E.J. |
| CHECKED | J.A.Z. |

SB PIER 3 REPAIRS
IL 50 (CICERO AVE) OVER BRC R.R.
F.A.P. 350, SECTION 50-1 VB-1-BR
COOK COUNTY
S.N. 016-2512 (S.B.), 016-2513 (N.B.)
DATE: 10-23-09
CRAEF
CHICAGO
ILLINOIS