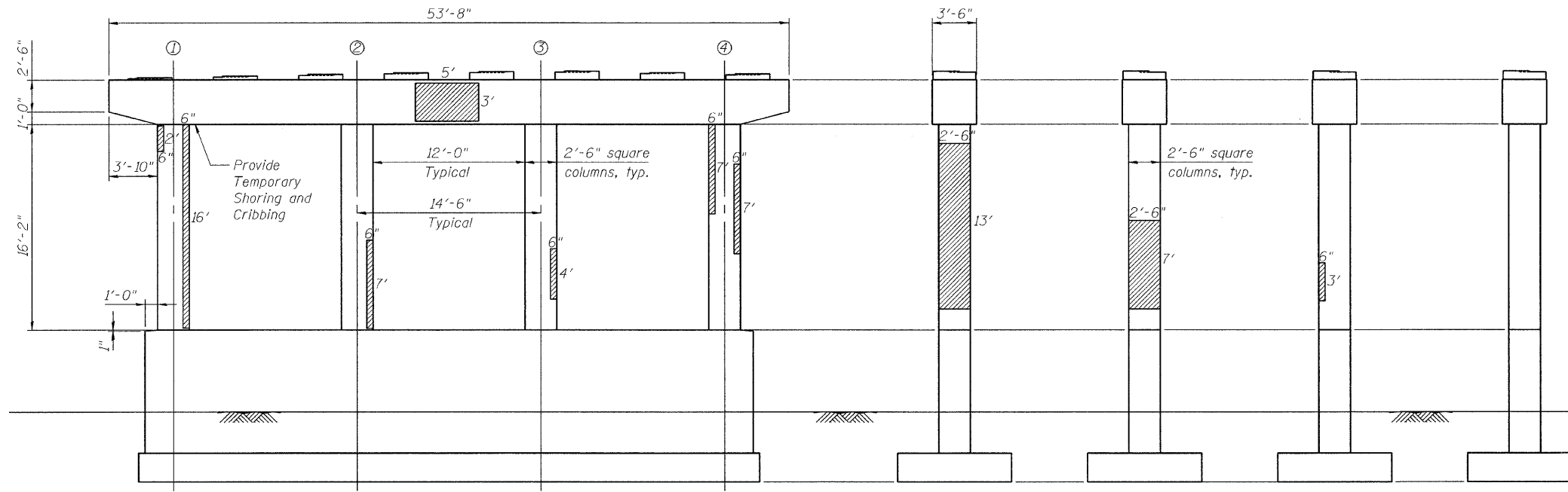


Contract # 60H76



**NB PIER 4 ELEVATION**  
(Looking South)

**COLUMN 1**  
(Looking East)

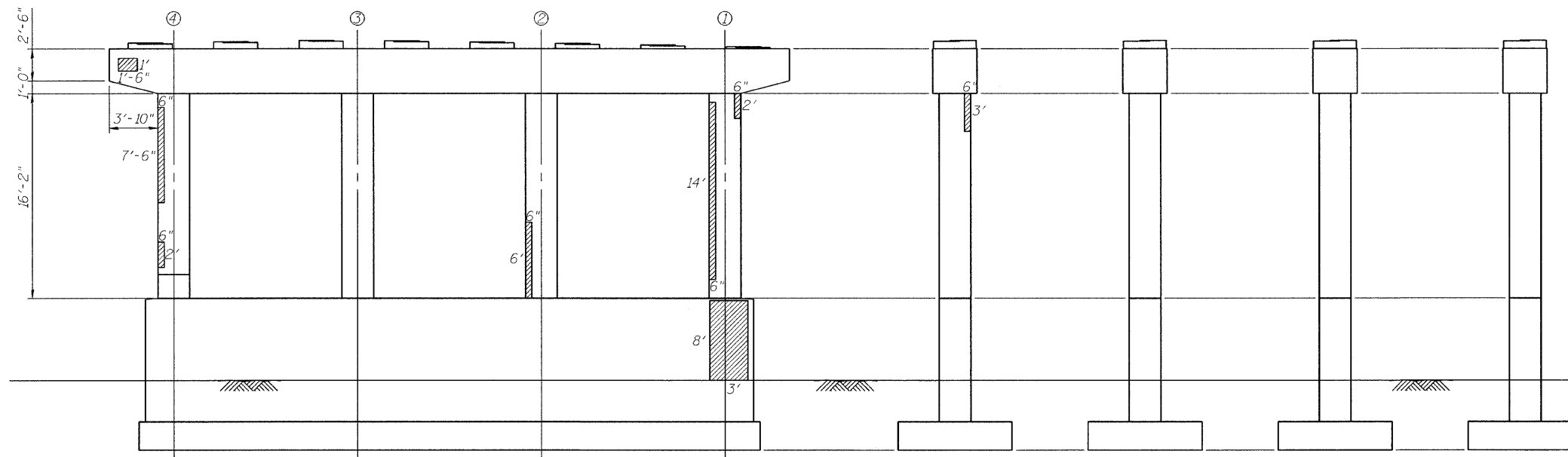
**COLUMN 2**  
(Looking East)

**COLUMN 3**  
(Looking East)

**COLUMN 4**  
(Looking East)

**NB PIER 4 REACTIONS  
(BEAM LOADS ONLY)**

	Span 4	Span 5
$R_{DL}$ (k)	36.4	39.5
$R_{SDL}$ (k)	4.3	4.4
$R_{LL}$ (k)	32.9	33.6
$R_T$ (k)	8.8	8.8
$R_{Total}$ (k)	82.4	86.3



**NB PIER 4 ELEVATION**  
(Looking North)

**COLUMN 4**  
(Looking West)

**COLUMN 3**  
(Looking West)

**COLUMN 2**  
(Looking West)

**COLUMN 1**  
(Looking West)

**BILL OF MATERIAL**

Item	Unit	Quantity
Structural Repair of Concrete (Depth Equal to or Less than 5")	Sq. Ft.	131

**LEGEND**

- Structural Repair of Concrete (Depth equal to or less than 5")
- Column Number

DESIGNED	E.E.J.
CHECKED	J.A.Z.
DRAWN	E.E.J.
CHECKED	J.A.Z.

**NB PIER 4 REPAIRS**  
 IL 50 (CICERO AVE) OVER BRC R.R.  
 F.A.P. 350, SECTION 50-1 VB-1-BR  
 COOK COUNTY  
 S.N. 016-2512 (S.B.), 016-2513 (N.B.)  
 DATE: 10-23-09  
 GRAEF  
 CHICAGO  
 ILLINOIS