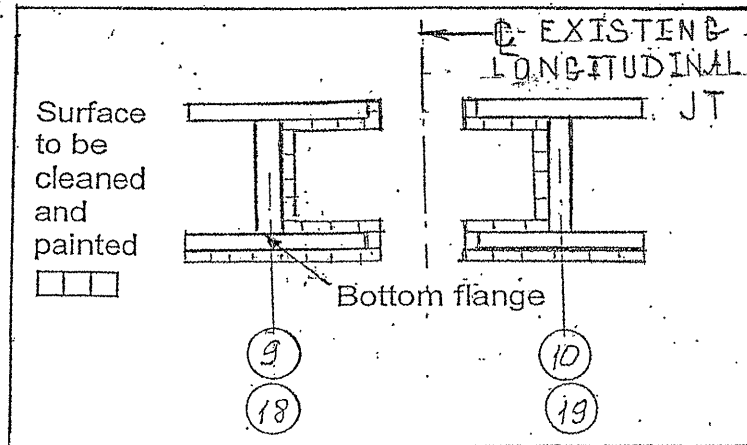
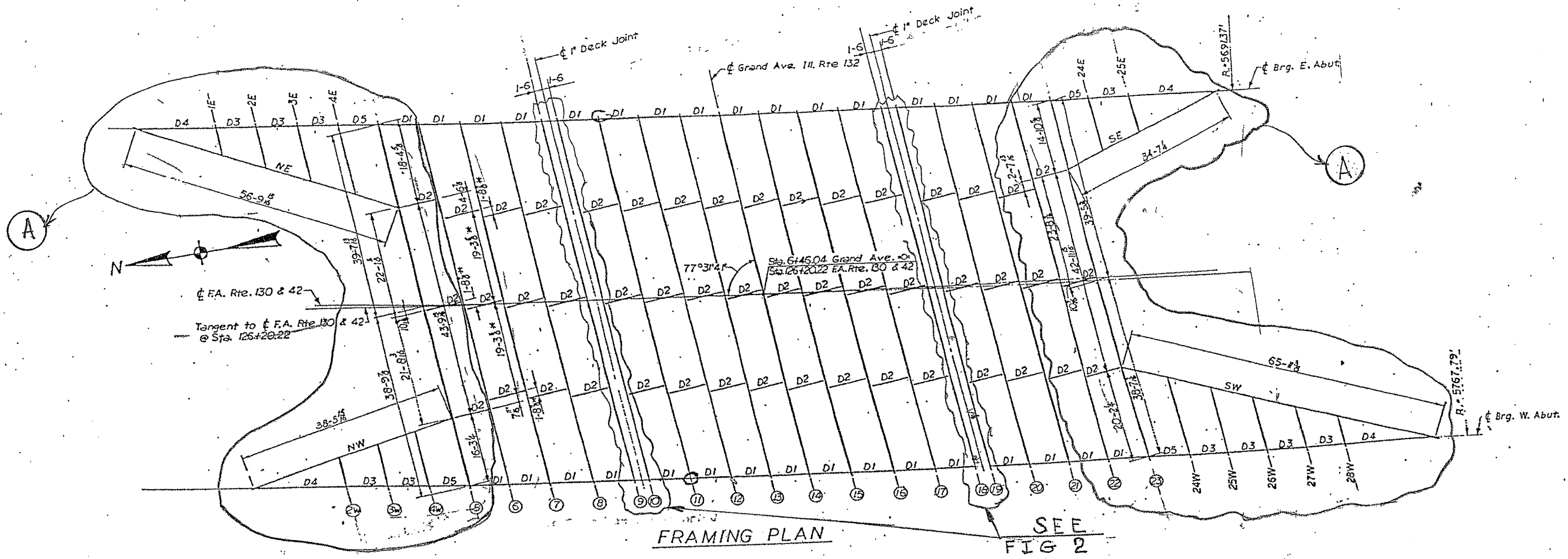


ROUTE	SECTION	COUNTY	TOTAL SHEETS	SHEET NUMBER
VARIOUS	2009-079 BP	COOK & LAKE	26	4

Contract 60116



BEAM PAINTING DETAIL

FIGURE 2

LOCATION 2 (SN 049-0118)

ALL BEAMS, BEARINGS AND OTHER STRUCTURAL STEEL WITHIN FIVE (5) FT, (MEASURED ALONG THE BEAM) OF EITHER SIDE OFF ALL DECK JOINTS, SHALL BE CLEANED PER NEAR WHITE BLAST CLEANING SSPC-SP10. THE SURFACES FACING THE EXISTING LONGITUDINAL JOINTS AND TOP AND BOTTOM OF THE BOTTOM FLANGE OF THE BEAMS (SEE FIGURE 2) AND ALL BEAMS HIGHLIGHTED IN AREA "A", SHALL BE CLEANED PER NEAR WHITE BLAST CLEANING SSPC-SP10.

SHEET 2 OF 2

ILLINOIS DEPARTMENT OF TRANSPORTATION
GENERAL PAINT NOTES