

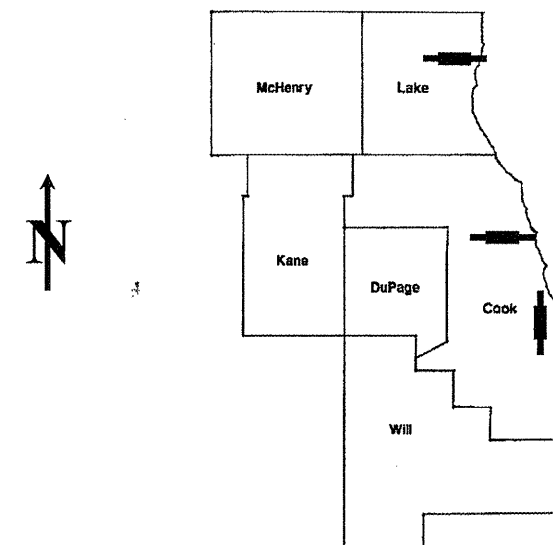
| ROUTE | SECTION | COUNTY | TOTAL SHEETS | SHEET NUMBER |
|---------|-------------|-------------|--------------|--------------|
| VARIOUS | 2009-079 BP | COOK & LAKE | 26 | 1 |

FOR INDEX OF SHEETS SEE SHEET 2

**CONTRACT NO. 60116
D-91-860-09**

**IMPROVEMENTS ARE LOCATED
IN THE SAUK VILLAGE,
AND THE CITIES OF
WAUKEGAN AND CHICAGO**

**STATE OF ILLINOIS
DEPARTMENT OF TRANSPORTATION
DIVISION OF HIGHWAYS
DISTRICT ONE
PROPOSED HIGHWAY PLANS**



LOCATION OF IMPROVEMENT INDICATED THUS: 

**VARIOUS ROUTES
VARIOUS LOCATIONS
SECTION 2009-079 BP
BRIDGE PAINTING
COOK AND LAKE COUNTIES
C-91-860-09**

LOCATION 1: SN 016-2042
LOCATION 2: SN 049-0118
LOCATION 3: SN 016-1041,-0456

**STATE OF ILLINOIS
DEPARTMENT OF TRANSPORTATION
DIVISION OF HIGHWAYS**
 SUBMITTED: OCTOBER 23, 20 09
Diane M. O'Keefe DEPUTY DIRECTOR OF HIGHWAYS, REGION ENGINEER
December 4, 2009
Charles J. Ingersoll ENGINEER OF DESIGN AND ENVIRONMENT
December 4, 2009
Christine M. Reed DIRECTOR, DIVISION OF HIGHWAYS

**PRINTED BY THE AUTHORITY
OF THE STATE OF ILLINOIS**

J.U.L.I.E.: JOINT UTILITY LOCATION
INFORMATION FOR EXCAVATION
(800) 892-0123 OR 811

C.U.A.N.
CHICAGO UTILITY ALERT NETWORK
1-312-744-7000

**PROJECT ENGINEER ROBERT BORO (847) 705-4178
PROJECT MANAGER KEN ENG**

CONTRACT NO. 60116

INDEX OF SHEETS

| ROUTE | SECTION | COUNTY | TOTAL SHEETS | SHEET NUMBER |
|---------|------------|-------------|--------------|--------------|
| VARIOUS | 2009-079BP | COOK & LAKE | 26 | 2 |

CONTRACT NO. 60I16

- 1 TITLE SHEET
- 2 INDEX OF SHEETS, STATE STANDARDS AND GENERAL NOTES
- 3-4 GENERAL PAINT NOTES
- 5 SUMMARY OF QUANTITIES
- 6-8 LOCATION MAPS
- 9-12 EXISTING BRIDGE PLANS (SN 016-2042, LOC 1)
- 13-20 EXISTING BRIDGE PLANS (SN 049-0118, LOC 2)
- 21-23 EXISTING BRIDGE PLANS (SN 016-0456, -1041 LOC 3)
- 24 TRAFFIC CONTROL DETAILS FOR FREEWAY SINGLE & MULTI-LANE WEAVE (TC-9)
- 25 TRAFFIC CONTROL FOR SHOULDERS CLOSURES AND PARTIAL RAMP CLOSURES (TC-17)
- 26 ARTERIAL ROAD INFORMATION SIGN (TC-22)

STATE STANDARDS

- 701101-02 MULTILANE OFF-ROAD OPERATIONS
- 701400-04 FREEWAY / EXPRESSWAY, APPROACH TO LANE CLOSURE
- 701401-05 FREEWAY / EXPRESSWAY, LANE CLOSURE
- 701411-06 LANE CLOSURE, MULTILANE, AT ENTRANCE OR EXIT RAMP, FOR SPEEDS > 45 MPH
- 701421-02 LANE CLOSURE, MULTILANE, DAY OPERATIONS ONLY, FOR SPEEDS >45 MPH TO 55 MPH
- 701426-03 MULTILANE, LANE CLOSURE, INTERMITTEN OR MOVING OPERATION FOR SPEEDS >45 MPH
- 701446-01 FREEWAY EXPRESSWAY, TWO LANE CLOSURE
- 701901-01 TRAFFIC CONTROL DEVICES

GENERAL NOTES

BEFORE STARTING ANY EXCAVATION, THE CONTRACTOR SHALL CALL "J.U.L.I.E." AT (800) 892-0123 OR 811 FOR FIELD LOCATIONS OF BURIED ELECTRIC, TELEPHONE AND GAS UTILITIES. 48 HOURS NOTIFICATION IS REQUIRED.

BEFORE STARTING ANY EXCAVATION IN THE CITY OF CHICAGO, THE CONTRACTOR SHALL CALL "C.U.A.N." AT (312) 744-7000 OR FOR FIELD LOCATIONS OF BURIED ELECTRIC, TELEPHONE AND GAS UTILITIES. 48 HOUR NOTIFICATION IS REQUIRED.

THE CONTRACTOR SHALL COORDINATE CONSTRUCTION ACTIVITIES WITH UTILITY COMPANIES, THE CITIES OF CHICAGO & WAUKEGAN AND THE SAUK VILLAGE.

WHEN ARTIFICIAL LIGHTING IS UTILIZED IN NIGHT OPERATIONS, THE CONTRACTOR SHALL EXERCISE THE UTMOST PRECAUTIONS IN PREVENTING ADVERSE VISIBILITY TO THE MOTORING PUBLIC AND ADJOINING RESIDENTIAL AREAS.

IT SHALL BE THE CONTRACTOR'S RESPONSIBILITY TO VERIFY ALL DIMENSIONS & CONDITIONS EXISTING IN THE FIELD PRIOR TO CONSTRUCTION & ORDERING OF MATERIALS.

THE CONTRACTOR WILL NOT BE ALLOWED TO SET UP A YARD OR FIELD OFFICE ON STATE PROPERTY WITHOUT WRITTEN PERMISSION FROM THE DEPARTMENT.

THE CONTRACTOR SHALL CONTACT THE DISTRICT ONE TRAFFIC CONTROL SUPERVISOR AT (847) 705-4470 FOR ARTERIALS OR (847)705-4151 FOR EXPRESSWAYS A MINIMUM OF 72 HOURS IN ADVANCE OF BEGINNING WORK.

THE CONTRACTOR SHALL BE REQUIRED TO PROVIDE ACCESS TO ABUTTING PROPERTY AT ALL TIMES DURING THE CONSTRUCTION OF THIS PROJECT.

DO NOT SCALE PLANS FOR CONSTRUCTION DIMENSIONS.

IT SHALL BE THE CONTRACTOR'S RESPONSIBILITY TO PROTECT AND PRESERVE THE EXISTING BRIDGE LIGHTING AT ANY LOCATIONS THAT LIGHTING IS ENCOUNTERED ADJACENT TO AN AREA TO BE CLEANED AND PAINTED.

THE "ARTERIAL ROAD INFORMATION SIGN (TC-22)" IS APPLICABLE ONLY TO ARTERIAL ROADS AND SHALL NOT BE APPLIED TO EXPRESSWAYS, "ARTERIAL ROADS" ARE DEFINED AS "IL 137/ AMSTUTZ EXPRESSWAY".

ILLINOIS DEPARTMENT OF TRANSPORTATION

GENERAL NOTES
INDEX OF SHEETS
STATE STANDARDS

| ROUTE | SECTION | COUNTY | TOTAL SHEETS | SHEET NUMBER |
|---------|-------------|-------------|--------------|--------------|
| VARIOUS | 2009-079 BP | COOK & LAKE | 26 | 3 |

Contract 60I16

GENERAL NOTES FOR PAINT

CLEANING AND PAINTING OF THE EXISTING STRUCTURAL STEEL SHALL BE AS SPECIFIED IN THE SPECIAL PROVISION FOR "CLEANING AND PAINTING EXISTING STEEL STRUCTURES".

A MINIMUM OF TWO (2) AIR MONITORS WILL BE REQUIRED TO MONITOR ABRASIVE BLASTING OPERATIONS FOR ALL STRUCTURES. SEE SPECIAL PROVISION FOR "CONTAINMENT AND DISPOSAL OF LEAD PAINT CLEANING RESIDUE."

THE AREAS DESIGNATED TO BE CLEANED PER NEAR WHITE BLAST CLEANING SSPC-SP10 SHALL BE PAINTED ACCORDING TO THE REQUIREMENTS OF PAINT SYSTEM 1 - OZ/E/U. ALL OTHER LOCATIONS: THE COLOR OF THE FINAL FINISH COAT FOR ALL INTERIOR STEEL SURFACES SHALL BE GRAY, MUNSELL NO 5B 7/1. THE COLOR OF THE FINAL FINISH COAT FOR THE EXTERIOR AND BOTTOM FLANGE OF THE FASCIA BEAMS SHALL BE REDDISH BROWN, MUNSELL NO 2.5YR 3/4.

ALL ITEMS (SUCH AS, BUT NOT LIMITED TO: CONDUITS, BRACKETS AND DECK DRAINS) ATTACHED TO THE OUTSIDE OF THE FASCIA BEAMS SHOULD BE CLEANED AND PAINTED.

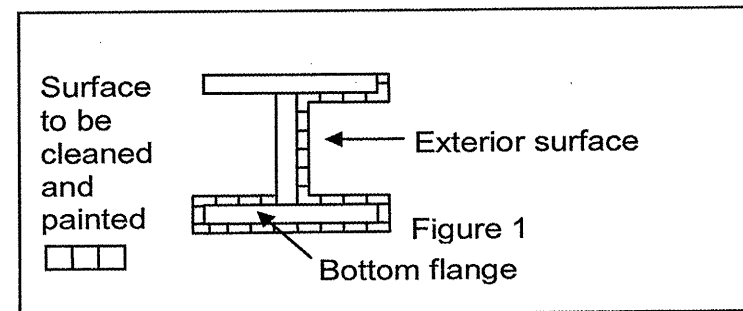
THE SSPC QP1 & QP2 PAINTING CONTRACTOR CERTIFICATIONS WILL BE REQUIRED FOR THIS CONTRACT.

LOCATION 1 (SN 016-2042)

ALL EXISTING STRUCTURAL STEEL SHALL BE CLEANED PER NEAR WHITE BLAST CLEANING SSPC-SP10. CARE SHALL BE TAKEN TO PROTECT EXISTING BUSHING AT PIN AND LINKS.

LOCATION 3 (SN 016-1041, -0456)

ALL BEAMS, BEARINGS AND OTHER STRUCTURAL STEEL WITHIN FIVE (5) FT., (MEASURED ALONG THE BEAM) OF EITHER SIDE OF ALL DECK JOINTS, SHALL BE CLEANED PER NEAR WHITE BLAST CLEANING SSPC-SP10. THE EXTERIOR SURFACES AND TOP AND BOTTOM OF THE BOTTOM FLANGE OF THE FASCIA BEAMS (SEE FIGURE 1) SHALL BE CLEANED PER NEAR WHITE BLAST CLEANING SSPC-SP10.



FASCIA BEAM PAINTING DETAIL

FIGURE 1

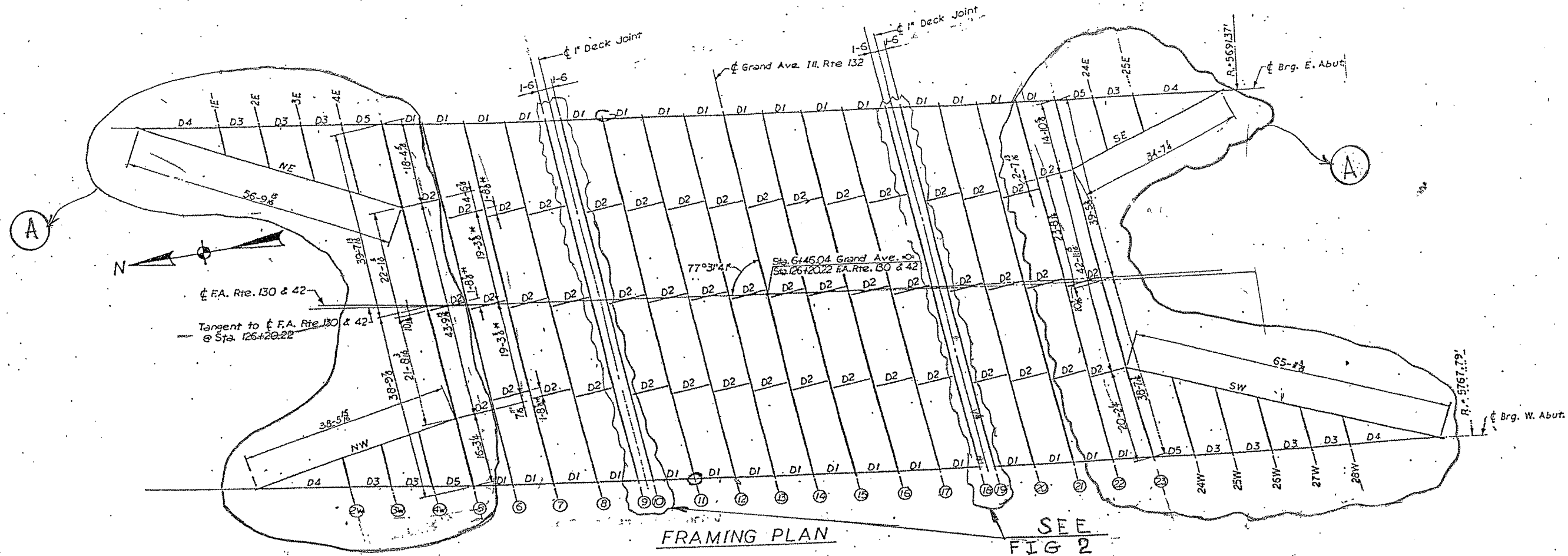
SHEET 1 OF 2

ILLINOIS DEPARTMENT OF TRANSPORTATION

GENERAL PAINT NOTES

| ROUTE | SECTION | COUNTY | TOTAL SHEETS | SHEET NUMBER |
|---------|-------------|-------------|--------------|--------------|
| VARIOUS | 2009-079 BP | COOK & LAKE | 26 | 4 |

Contract 60116

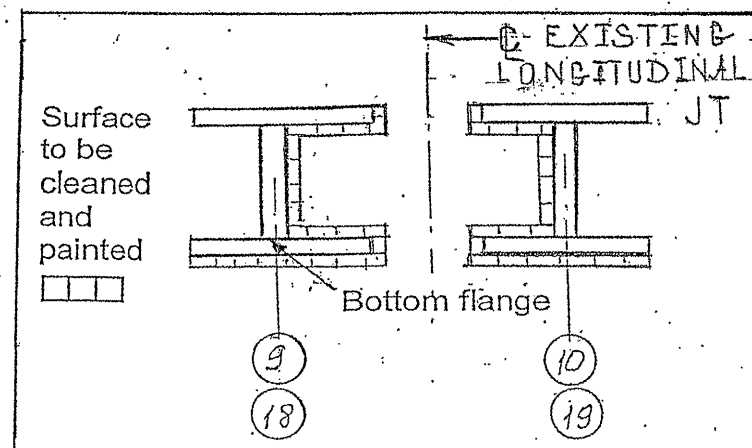


FRAMING PLAN SEE FIG 2

LOCATION 2 (SN 049-0118)

ALL BEAMS, BEARINGS AND OTHER STRUCTURAL STEEL WITHIN FIVE (5) FT, (MEASURED ALONG THE BEAM) OF EITHER SIDE OFF ALL DECK JOINTS, SHALL BE CLEANED PER NEAR WHITE BLAST CLEANING SSPC-SP10. THE SURFACES FACING THE EXISTING LONGITUDINAL JOINTS AND TOP AND BOTTOM OF THE BOTTOM FLANGE OF THE BEAMS (SEE FIGURE 2) AND ALL BEAMS HIGHLIGHTED IN AREA "A", SHALL BE CLEANED PER NEAR WHITE BLAST CLEANING SSPC-SP10.

SHEET 2 OF 2



BEAM PAINTING DETAIL

FIGURE 2

ILLINOIS DEPARTMENT OF TRANSPORTATION
GENERAL PAINT NOTES

| ROUTE | SECTION | COUNTY | TOTAL SHEETS | SHEET NUMBER |
|---------|------------|--------|--------------|--------------|
| VARIOUS | 2009-079BP | COOK | 32 | 5 |

CONTRACT NO. 60116

SUMMARY OF QUANTITIES

| Code No | Description | Units | URBAN Total Quantities | Construction Type Code: SFTY-2A | | | |
|----------|---|--------|------------------------------|---------------------------------|-------|--------------------------------|--------------------------------|
| | | | | Loc 1 | Loc 2 | Cook Co. Location 3 | |
| | | | | | | SN 016-2042 <i>COOK CO.</i> | SN 049-0118 <i>LAKE CO.</i> |
| 50600600 | CLEANING AND PAINTING STEEL BRIDGE NO. 1 | L SUM | 1 | 1 | | | |
| 50600700 | CLEANING AND PAINTING STEEL BRIDGE NO. 2 | L SUM | 1 | | 1 | | |
| 50600800 | CLEANING AND PAINTING STEEL BRIDGE NO. 3 | L SUM | 1 | | | 1 | |
| 50600900 | CLEANING AND PAINTING STEEL BRIDGE NO. 4 | L SUM | 1 | | | | 1 |
| 50606400 | CONTAINMENT AND DISPOSAL OF LEAD PAINT CLEANING RESIDUES | L SUM | 1 | 0.3 | 0.4 | 0.15 | 0.15 |
| 67000400 | ENGINEER'S FIELD OFFICE, TYPE A | CAL MO | 5 | 1.5 | 1.5 | 1 | 1 |
| 67100100 | MOBILIZATION | L SUM | 1 | 0.25 | 0.25 | 0.25 | 0.25 |
| 70100310 | TRAFFIC CONTROL AND PROTECTION, STANDARD 701421 | L SUM | 1 | | 1 | | |
| X0322256 | TEMPORARY INFORMATION SIGNING | SQ FT | 102.8 | | 102.8 | | |
| X0325702 | NIGHTTIME WORK ZONE LIGHTING | L SUM | 1 | 0.34 | | 0.33 | 0.33 |
| X7011015 | TRAFFIC CONTROL AND PROTECTION (EXPRESSWAYS) | L SUM | 1 | 0.34 | | 0.33 | 0.33 |
| Z0048665 | RAILROAD PROTECTIVE LIABILITY INSURANCE | L SUM | 1 | | | 0.5 | 0.5 |

ILLINOIS DEPARTMENT OF TRANSPORTATION

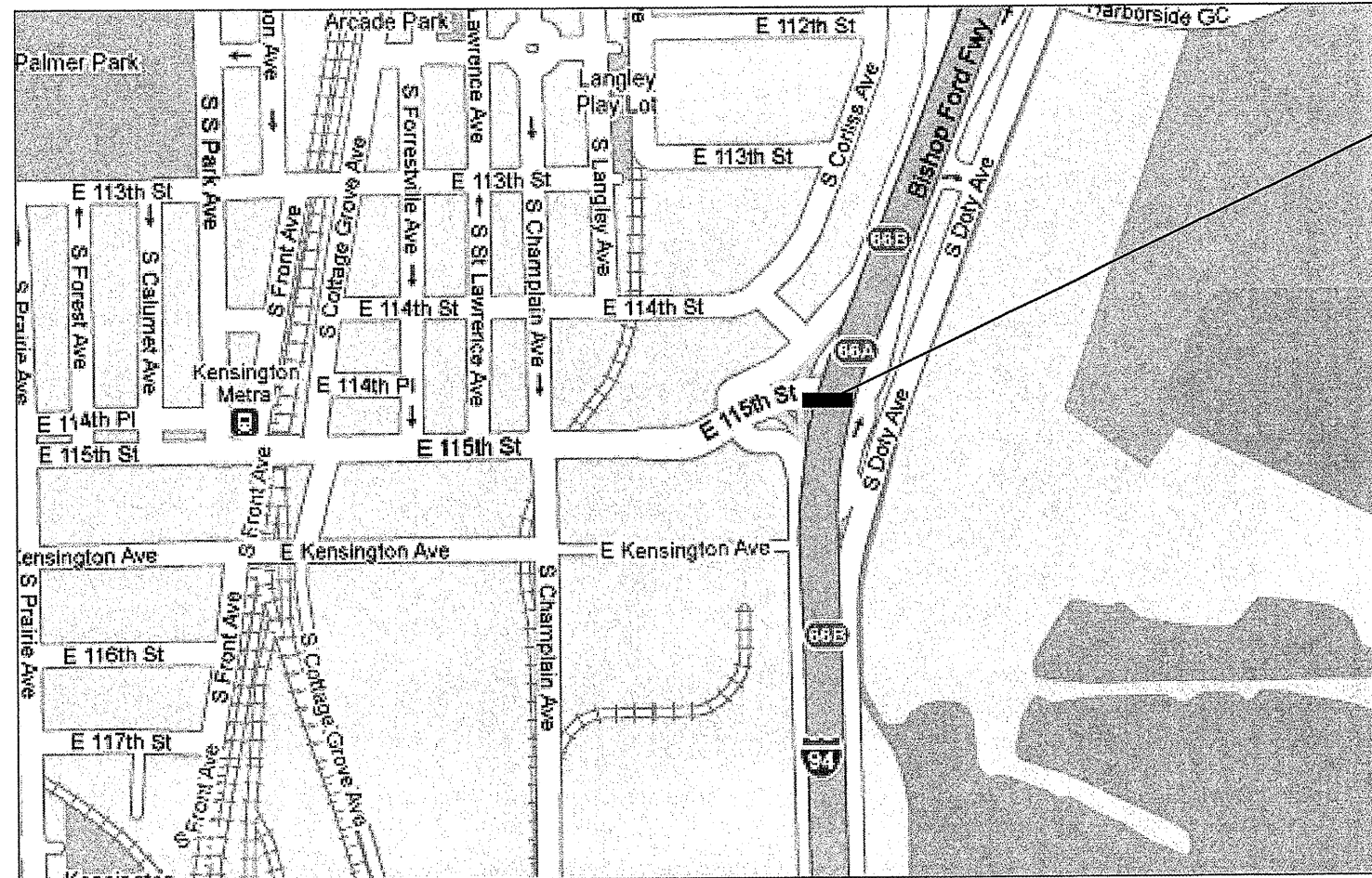
SUMMARY OF QUANTITIES

| ROUTE | SECTION | COUNTY | TOTAL SHEETS | SHEET NUMBER |
|--------|-------------|--------|--------------|--------------|
| FAI 94 | 2009-079 BP | COOK | 26 | 6 |

CONTRACT NO 60116

R 14 E

T 37 N



LOCATION 1:
SN 016-2042
115th ST (EB) OVER FAI 94
(BISHOP FORD EXPY)
CITY OF CHICAGO

HYDE PARK TOWNSHIP
COOK COUNTY

TRAFFIC DATA

115th STREET:

2006 ADT = 10800
POSTED SPEED LIMIT = 30 MPH

I- 94:

2007 ADT = 153100
POSTED SPEED LIMIT = 55 MPH

ILLINOIS DEPARTMENT OF
TRANSPORTATION

LOCATION MAP

LOCATION 1: SN 016-2042

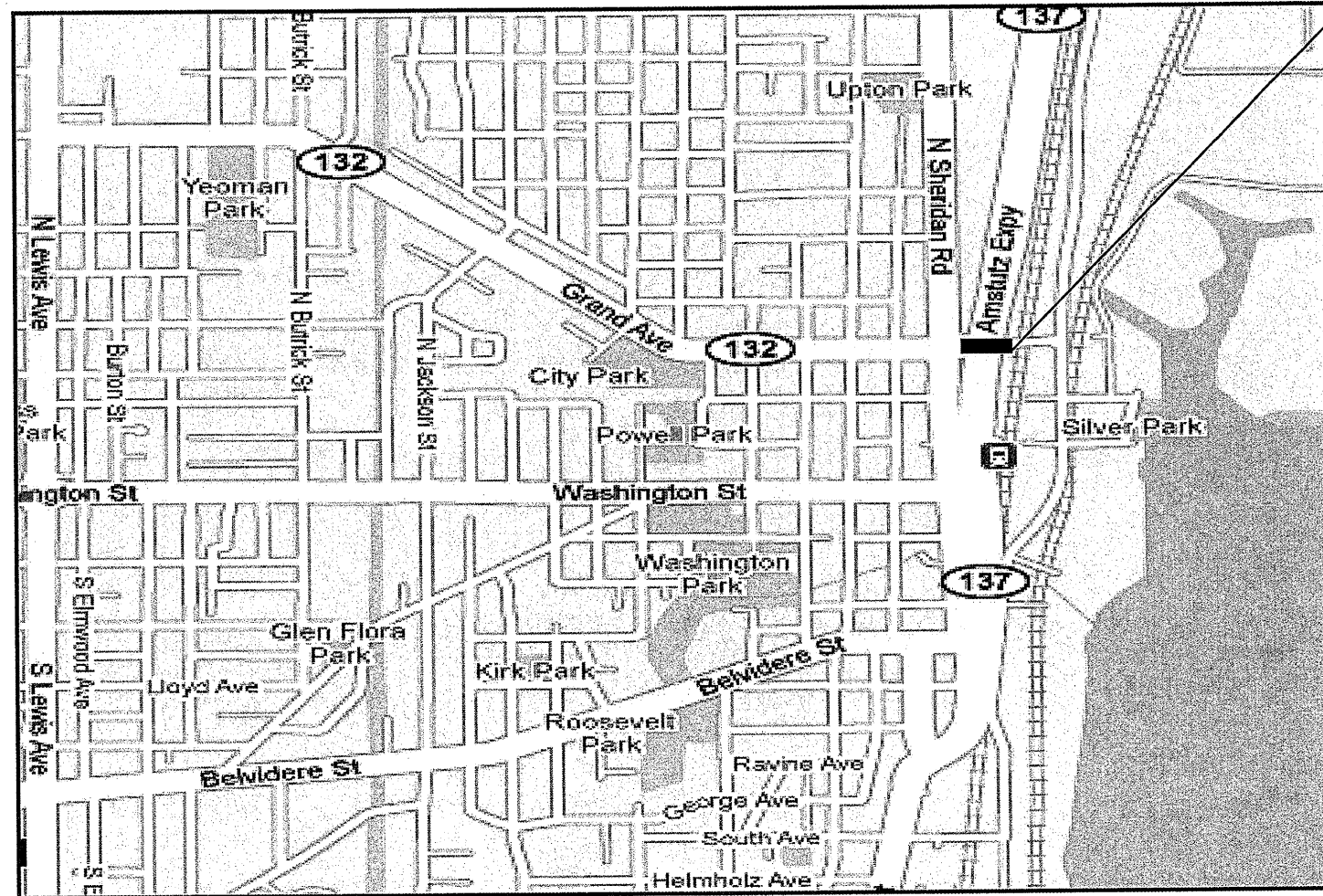
| ROUTE | SECTION | COUNTY | TOTAL SHEETS | SHEET NUMBER |
|---------|-------------|--------|--------------|--------------|
| FAP 541 | 2009-079 BP | LAKE | 26 | 7 |

CONTRACT NO. 60116

R 12 E

LOCATION 2:
SN 049-0118
GRAND AVE OVER IL137
(AMSTUTZ EXPY)
CITY OF WAUKEGAN

T 45 N



WAUKEGAN TOWNSHIP
LAKE COUNTY

TRAFFIC DATA

GRAND AVE:

2007 ADT = 5400
POSTED SPEED LIMIT = 30 MPH

IL 137 (AMSTUTZ AVE)

2007 ADT = 12600
POSTED SPEED LIMIT = 45 MPH

ILLINOIS DEPARTMENT OF
TRANSPORTATION

LOCATION MAP

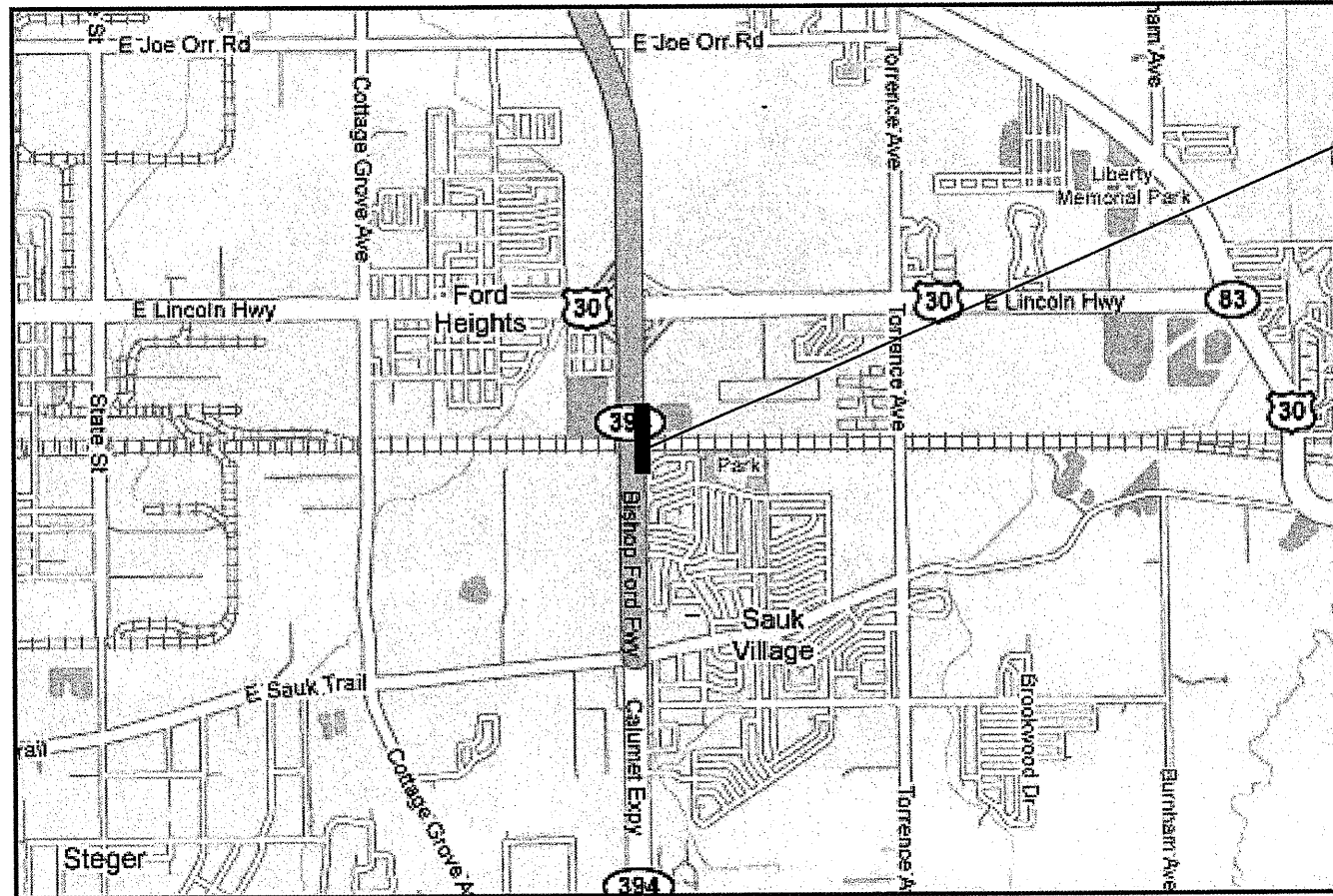
LOCATION 2: SN 049-0118

| ROUTE | SECTION | COUNTY | TOTAL SHEETS | SHEET NUMBER |
|----------------|-------------|--------|--------------|--------------|
| IL 394 NB & SB | 2009-079 BP | COOK | 26 | 8 |

CONTRACT NO 60116

T 35 N

R 14 E



LOCATION 3:
 SN 016-1041,-0456
 IL 394 (BISHOP FORD EXPY)
 OVER EJ & E & NS RR
 SAUK VILLAGE

BLOOM TOWNSHIP
 COOK COUNTY

TRAFFIC DATA

2007 ADT = 19850

POSTED SPEED LIMIT = 55 MPH

ILLINOIS DEPARTMENT OF
 TRANSPORTATION

LOCATION MAP

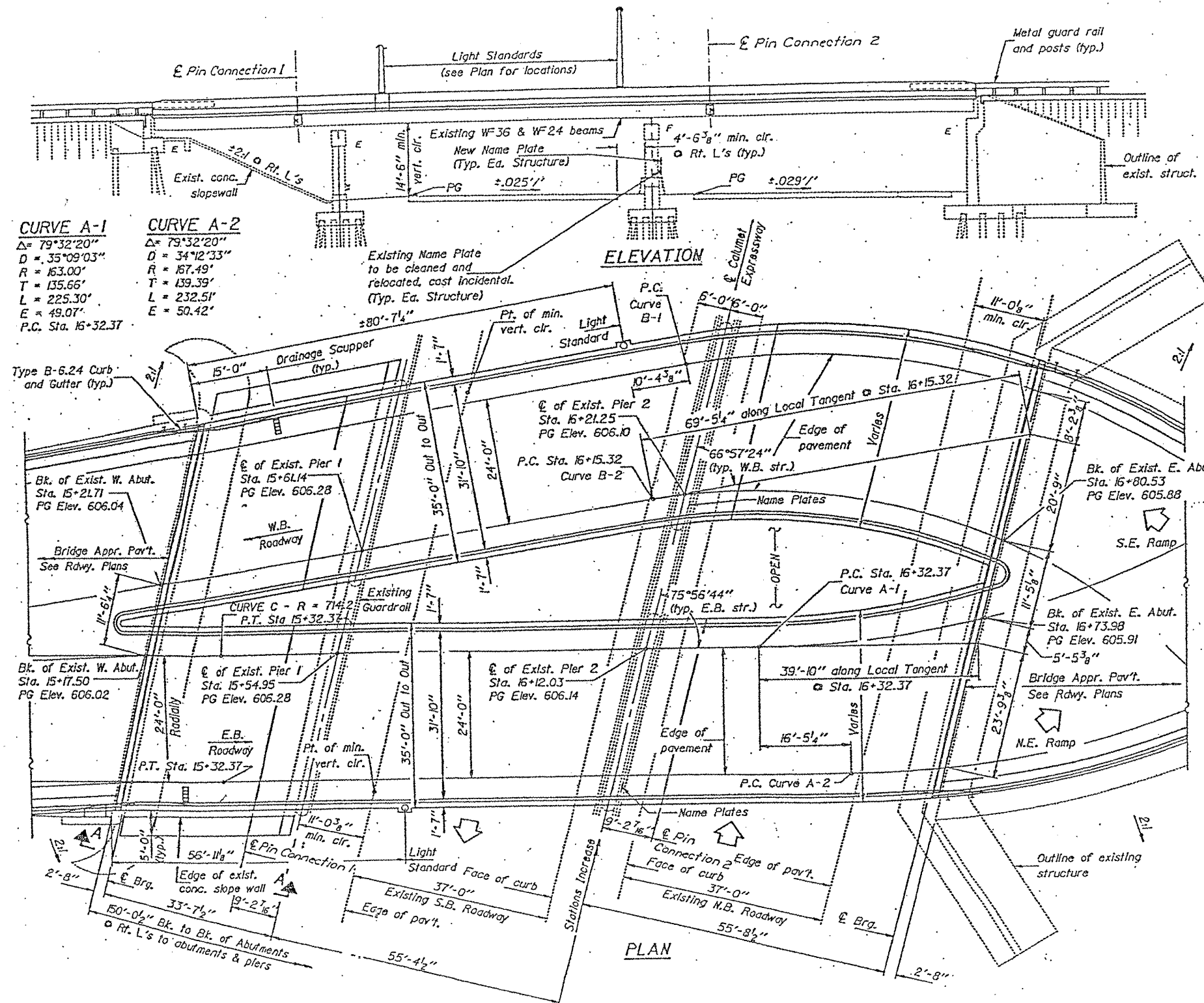
LOCATION 3: SN 016-1041, -0456

| | | | | |
|------------------|------------------------|-----------------------|--------------------|-------------------|
| | | | TOTAL SHEETS 26 | SHEET NUMBER 9 |
| ROUTE VARIOUS | SECTION 2009-079 BP | COUNTY COOK & LAKE | | |

Contract 60116

STATE OF ILLINOIS
DEPARTMENT OF TRANSPORTATION

FOR INFORMATION ONLY



STATION 17+65.87
REBUILT BY
STATE OF ILLINOIS
F.A.I. RT. 94 SEC. 1978-320BR-78
F.A. PROJ.
LOADING HS20
STR. NO.

NAME PLATE
(2 Required)
See Std. 2113

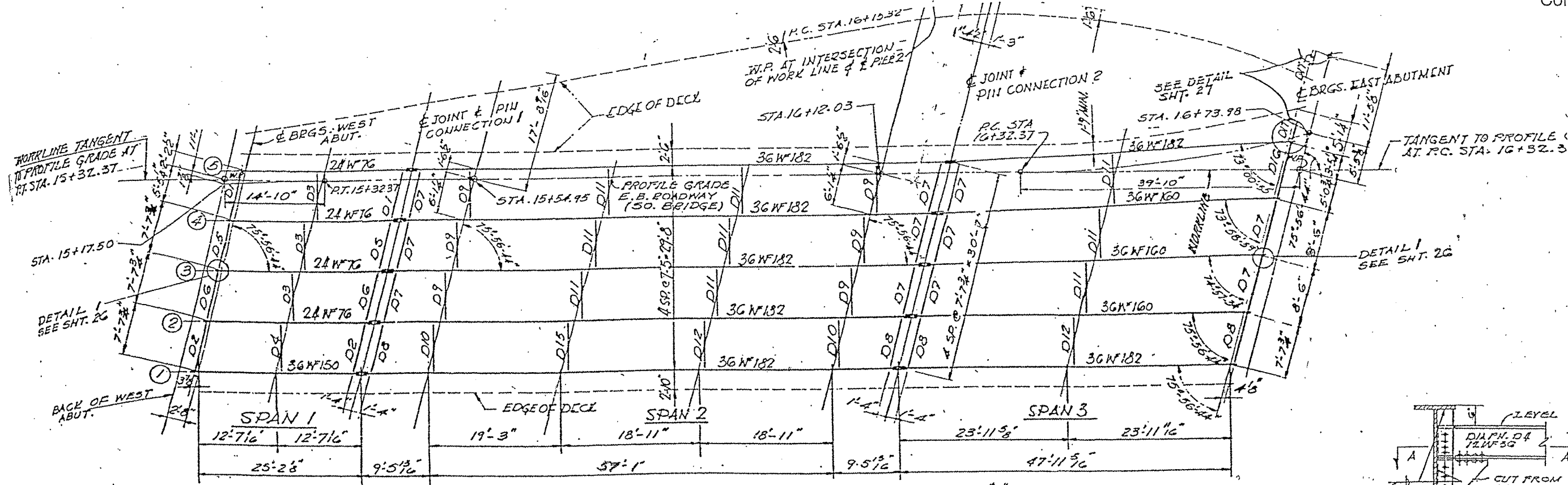
* West Bound Structure Number is 016-2043
East Bound Structure Number is 016-2042

ILLINOIS DEPARTMENT OF TRANSPORTATION

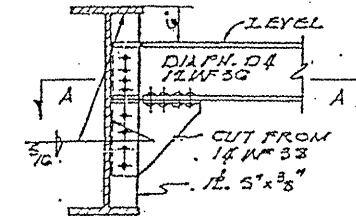
EXISTING BRIDGE PLAN
SN 016-2042
(LOC. 1)

| | | | | |
|------------------|------------------------|-----------------------|--------------------|--------------------|
| ROUTE VARIOUS | SECTION 2009-079 BP | COUNTY COOK & LAKE | TOTAL SHEETS 26 | SHEET NUMBER 10 |
|------------------|------------------------|-----------------------|--------------------|--------------------|

Contract 60116



STEEL FRAMING PLAN

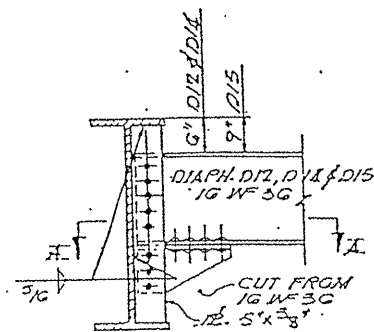


TYPICAL EXTERIOR CONNECTION FOR DIAPHRAGM D4
SCALE 3/4" = 1'-0"

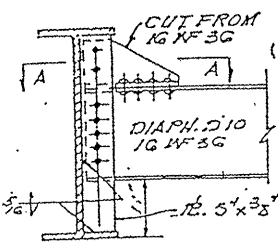
DIAPHRAGM SIZES

| DIAPHRAGM | SIZE |
|-----------------------------------|----------|
| D1, D2, D5 & D6 | 8 WF 55 |
| D3 & D4 | 12 WF 36 |
| D9, D10, D11, D12, D15, D16 & D15 | 16 WF 36 |
| D7 & D8 | 12 WF 40 |
| D16 | 12 WF 45 |

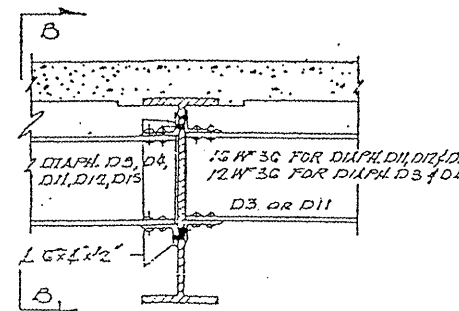
FOR INFORMATION ONLY



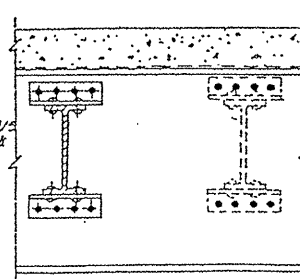
TYPICAL EXTERIOR CONNECTION FOR DIAPHRAGMS D12, D14 & D15



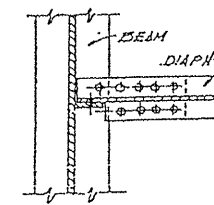
TYPICAL EXTERIOR CONNECTION DIAPHRAGM D10



TYPICAL INTERIOR CONNECTION FOR DIAPHRAGMS D3, D4, D11, D12, D15
SCALE 3/4" = 1'-0"



SECTION "B-B"



SECTION "A-A"

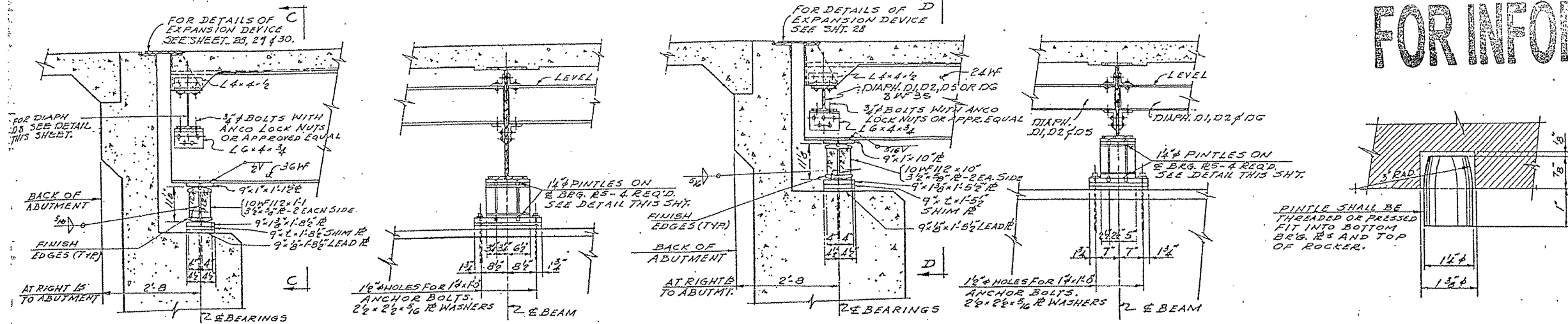
ILLINOIS DEPARTMENT OF TRANSPORTATION

EXISTING BRIDGE PLAN
SN 016-2042
(LOC. 1)

| | | | | |
|------------------|------------------------|-----------------------|--------------------|--------------------|
| ROUTE VARIOUS | SECTION 2009-079 BP | COUNTY COOK & LAKE | TOTAL SHEETS 26 | SHEET NUMBER 11 |
|------------------|------------------------|-----------------------|--------------------|--------------------|

Contract 60116

FOR INFORMATION ONLY



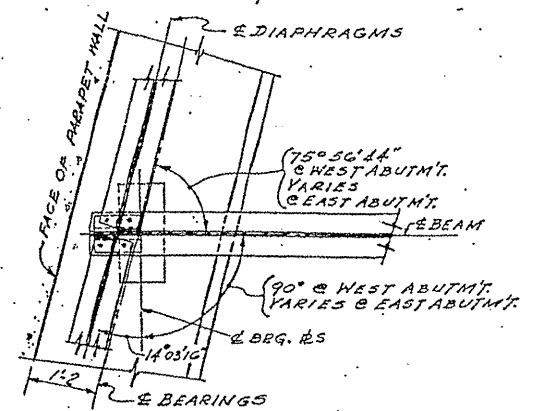
SECTION AT ABUTMENTS FOR 36WF SCALE: 3/4\"/>

SECTION C-C SCALE: 3/4\"/>

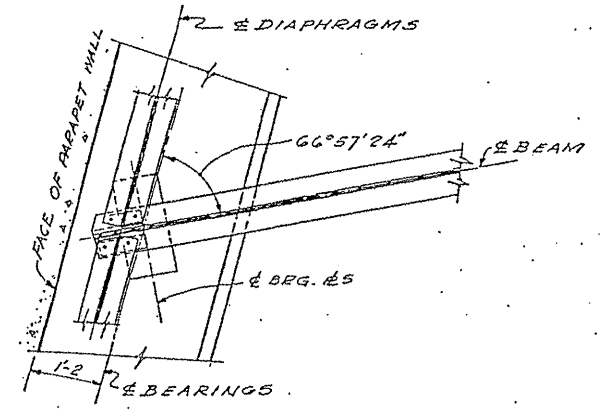
SECTION AT ABUTMENTS FOR 24WF SCALE: 3/4\"/>

SECTION D-D SCALE: 3/4\"/>

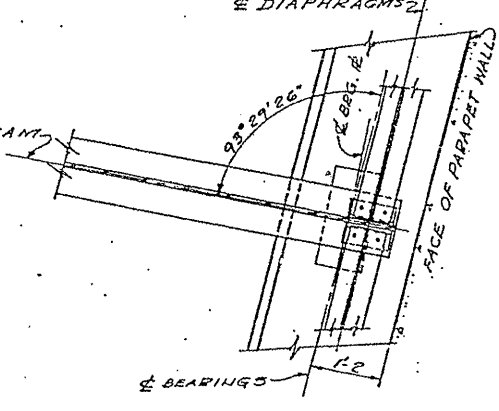
PINTLE DETAIL



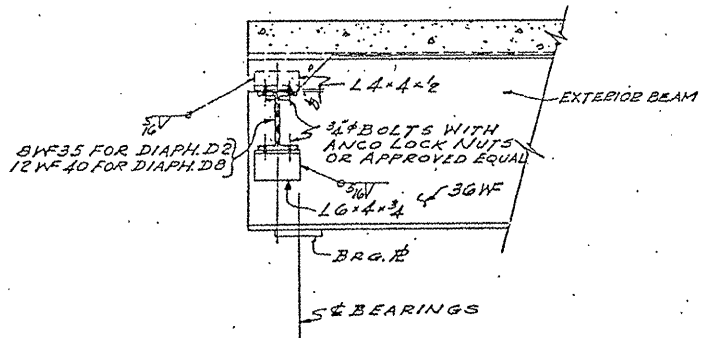
DETAIL 1 SCALE: 3/4\"/>



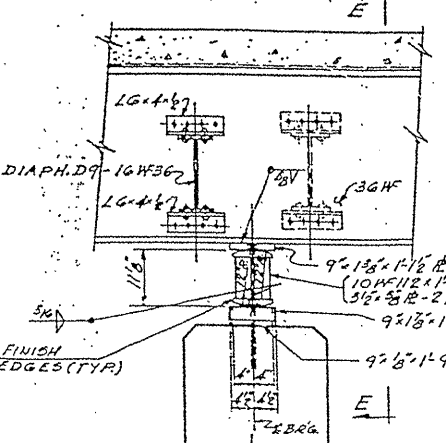
DETAIL 2 SCALE: 3/4\"/>



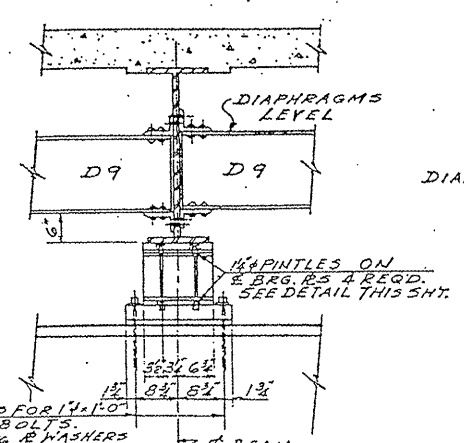
DETAIL 3 SCALE: 3/4\"/>



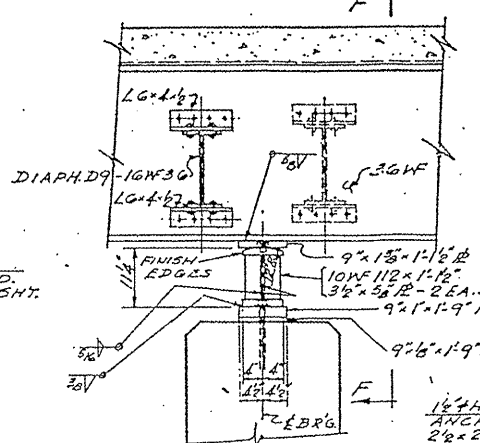
DETAIL FOR DIAPHRAGMS D2 & D8 SCALE: 3/4\"/>



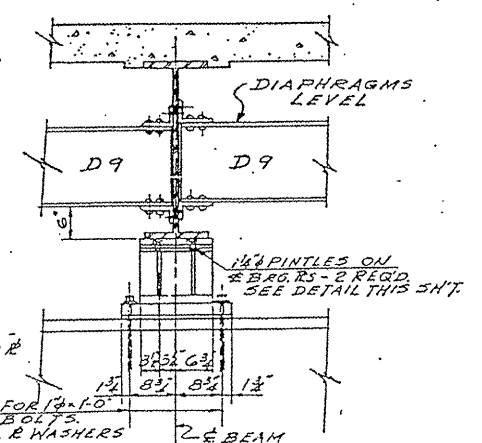
SECTION AT PIER 1 FOR 36WF SCALE: 3/4\"/>



SECTION E-E SCALE: 3/4\"/>



SECTION AT PIER 2 FOR 36WF SCALE: 3/4\"/>



SECTION F-F SCALE: 3/4\"/>

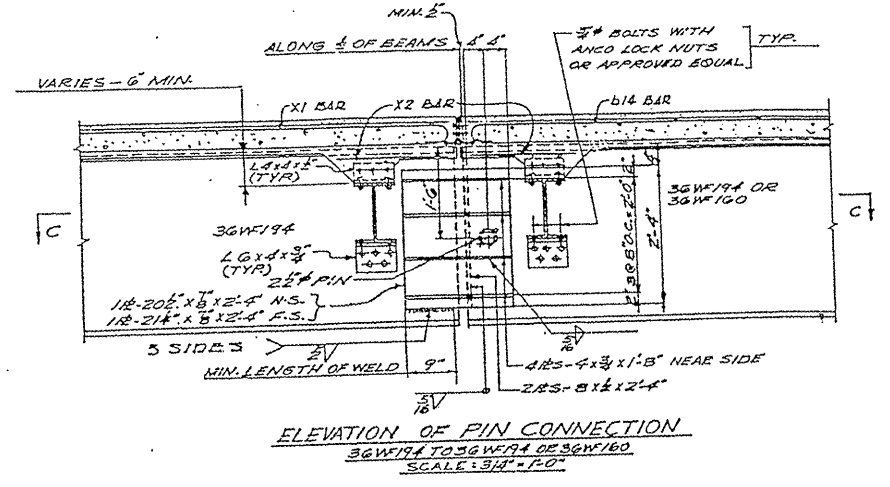
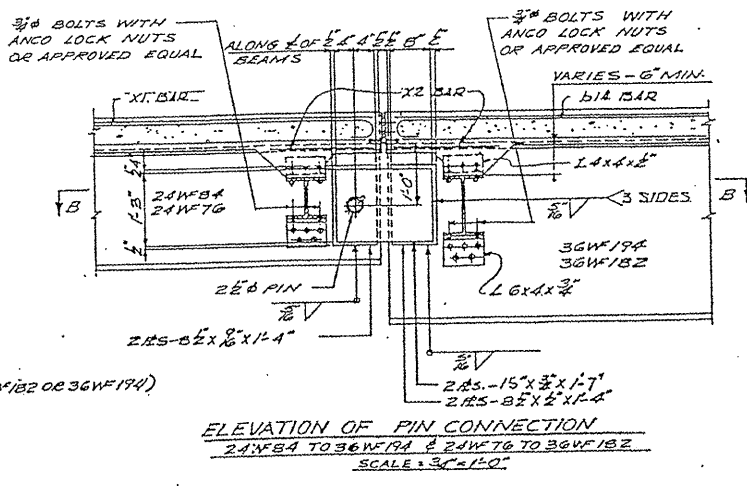
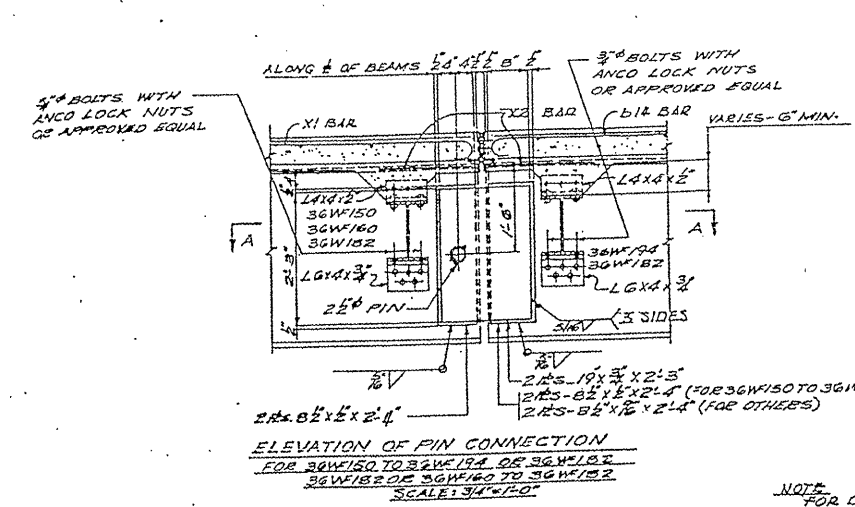
1/2\"/>

| BEAM LOCATION | SO. BRIDGE | | | | | NO. BRIDGE | | | | |
|---------------|------------|---|----|----|----|------------|---|---|---|---|
| | 1 | 2 | 3 | 4 | 5 | 1 | 2 | 3 | 4 | 5 |
| WEST ABUTMT. | - | - | - | - | - | - | - | - | - | - |
| PIER NO. 1 | - | - | - | - | - | - | - | - | - | - |
| PIER NO. 2 | - | - | - | - | - | - | - | - | - | - |
| EAST ABUTMT. | - | - | 30 | 20 | 20 | - | - | - | - | - |

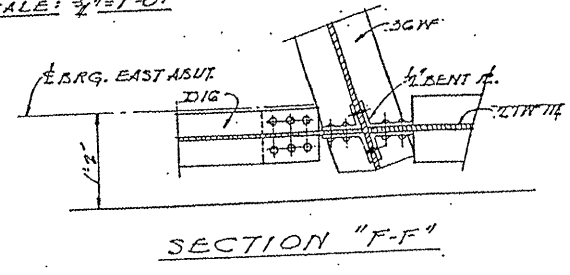
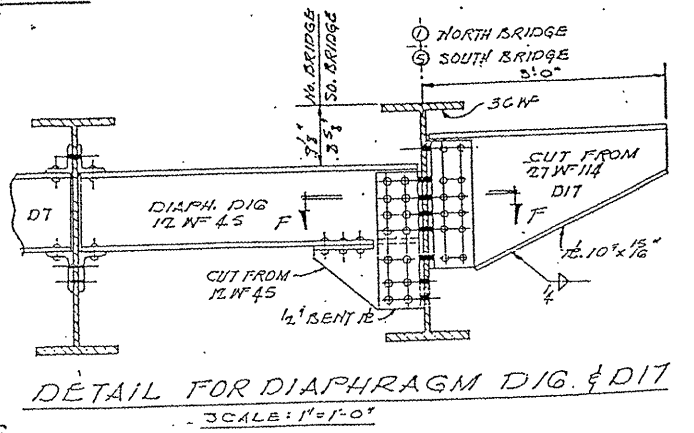
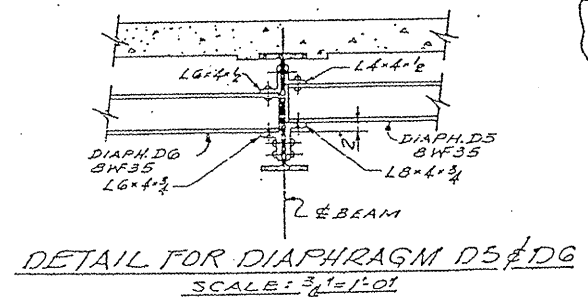
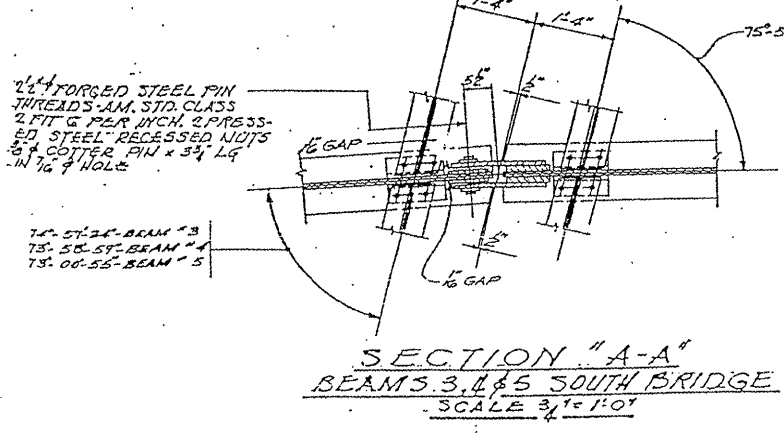
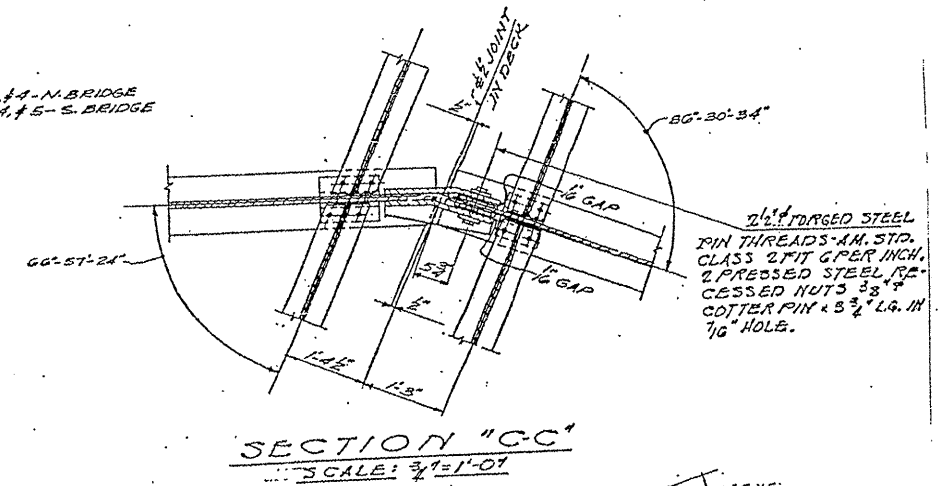
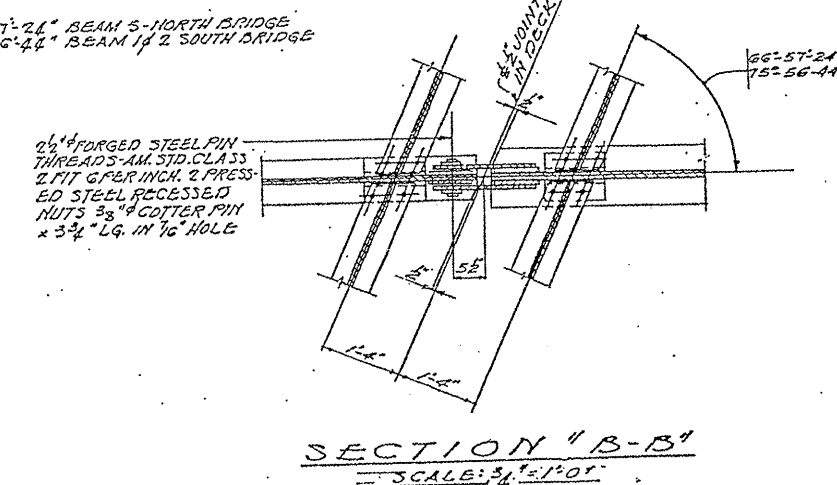
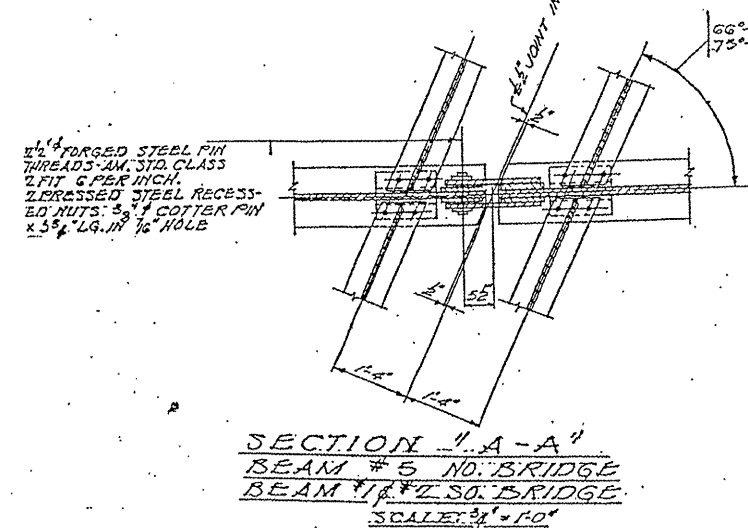
ILLINOIS DEPARTMENT OF TRANSPORTATION
 EXISTING BRIDGE PLAN
 SN 016-2042
 (LOC. 1)

| ROUTE | SECTION | COUNTY | TOTAL SHEETS | SHEET NUMBER |
|---------|-------------|-------------|--------------|--------------|
| VARIOUS | 2009-079 BP | COOK & LAKE | 26 | 12 |

Contract 60116



NOTE FOR DETAIL OF JOINT & WATER STOP SEE SH. 24.



FOR INFORMATION ONLY

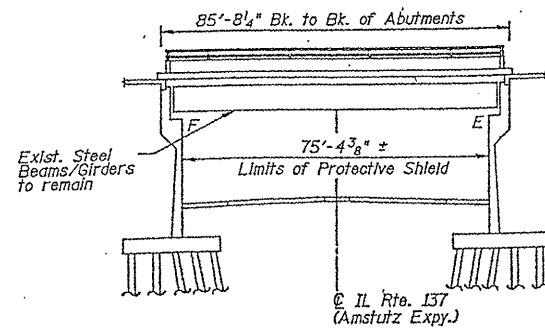
ILLINOIS DEPARTMENT OF TRANSPORTATION
EXISTING BRIDGE PLAN
SN 016-2042
(LOC. 1)

| | | | | |
|---------|-------------|-------------|--------------|--------------|
| ROUTE | SECTION | COUNTY | TOTAL SHEETS | SHEET NUMBER |
| VARIOUS | 2009-079 BP | COOK & LAKE | 26 | 13 |

Contract 60116

SCOPE OF WORK:

1. Hydro-scarification, deck slab repair and placement of latex concrete overlay.
2. Removal and replacement of bearings at West Abutment.
3. Removal and replacement of transverse joints at East and West Abutments.
4. Removal and elimination of longitudinal joint at existing north longitudinal joint. Removal and replacement of longitudinal joint at existing south longitudinal joint.
5. Aluminum railing repair.
6. Bridge will be closed during construction and a detour will be provided.



ELEVATION

DESIGN SPECIFICATIONS
AASHTO 17th Edition, 2002

IL RTE. 137 (AMSTUTZ EXPY.)
CURVE DATA

P.I. = 129+25.08
 Δ = 18°20'36"
D = 1°00'00"
R = 5729.58'
T = 925.08'
L = 1834.34'
E = 74.20'
S.E. = 0.03 ft/ft.

GENERAL NOTES

Fasteners shall be AASHTO M164 Type I, mechanically galvanized bolts. Bolts 3/4" ϕ , holes 1/2" ϕ , unless otherwise noted.
All structural steel shall be AASHTO M270 Grade 36.
No field welding is permitted except as specified in the contract documents.
Reinforcement bars shall conform to the requirements of ASTM A706 Gr 60 (IL Modified). See Special Provisions.
Reinforcement bars designated (E) shall be epoxy coated.
Prior to pouring the new concrete deck, all heavy or loose rust, loose mill scale, and other loose or potentially detrimental foreign material shall be removed from the surfaces in contact with concrete. Tightly adhered paint may remain unless otherwise noted. Removal shall be accomplished by methods that will not damage the steel and the cost will be included in the pay item covering removal of the existing concrete.
As directed by the Engineer, existing construction accessories welded to the top flange of beams and girders shall be removed. The weld areas shall be ground flush and inspected for cracks using magnetic particle testing (MT) or dye penetrant testing (PT) by an individual acceptable to the Engineer. Any cracks that cannot be removed by grinding 1/4 in. deep shall be identified and reported to the Bureau of Bridges and Structures for further disposition. The cost of removing welded accessories, grinding and inspecting weld areas and grinding cracks will be paid for according to Article 109.04 of the Standard Specifications.
Plan dimensions and details relative to existing plans are subject to routine variations. The Contractor shall field verify existing dimensions and details affecting new construction and make necessary approved adjustments prior to construction or ordering materials. Such variations shall not be cause for additional compensation for a change in scope of the work, however, the Contractor will be paid for the quantity actually furnished at the unit price bid for the work.
Cleaning and field painting of structural steel shall be done under a separate painting contract.
The existing structural steel coating contains lead. The Contractor shall take appropriate precautions to deal with the presence of lead on this project.
Joint openings shall be adjusted according to Article 520.04 of the Standard Specifications when the deck is poured at an ambient temperature other than 50°F.
All structural steel at expansion joints shall be shop painted with the inorganic zinc rich primer per AASHTO M300, Type I. Cost included with Preformed Joint Strip Seal.
Areas of deck repairs shown are estimated. The Engineer shall show actual locations of deck repairs on As-Built Plans.
All new fasteners shall be high strength bolts. Holes shall be subpunched or subdrilled 1/16" dia. and reamed in the field to 1/16" dia. for 3/4" dia. bolts, unless otherwise noted.
Existing reinforcement bars extending into the removal area shall be cleaned, straightened and incorporated into the new construction. Any reinforcement bars that are damaged during concrete removal shall be replaced with an approved bar splicer or anchorage system. Cost included with Concrete Removal.

DESIGN STRESSES

Field Units
 f'_c = 3,500 psi
 f'_y = 60,000 psi (Reinforcement)

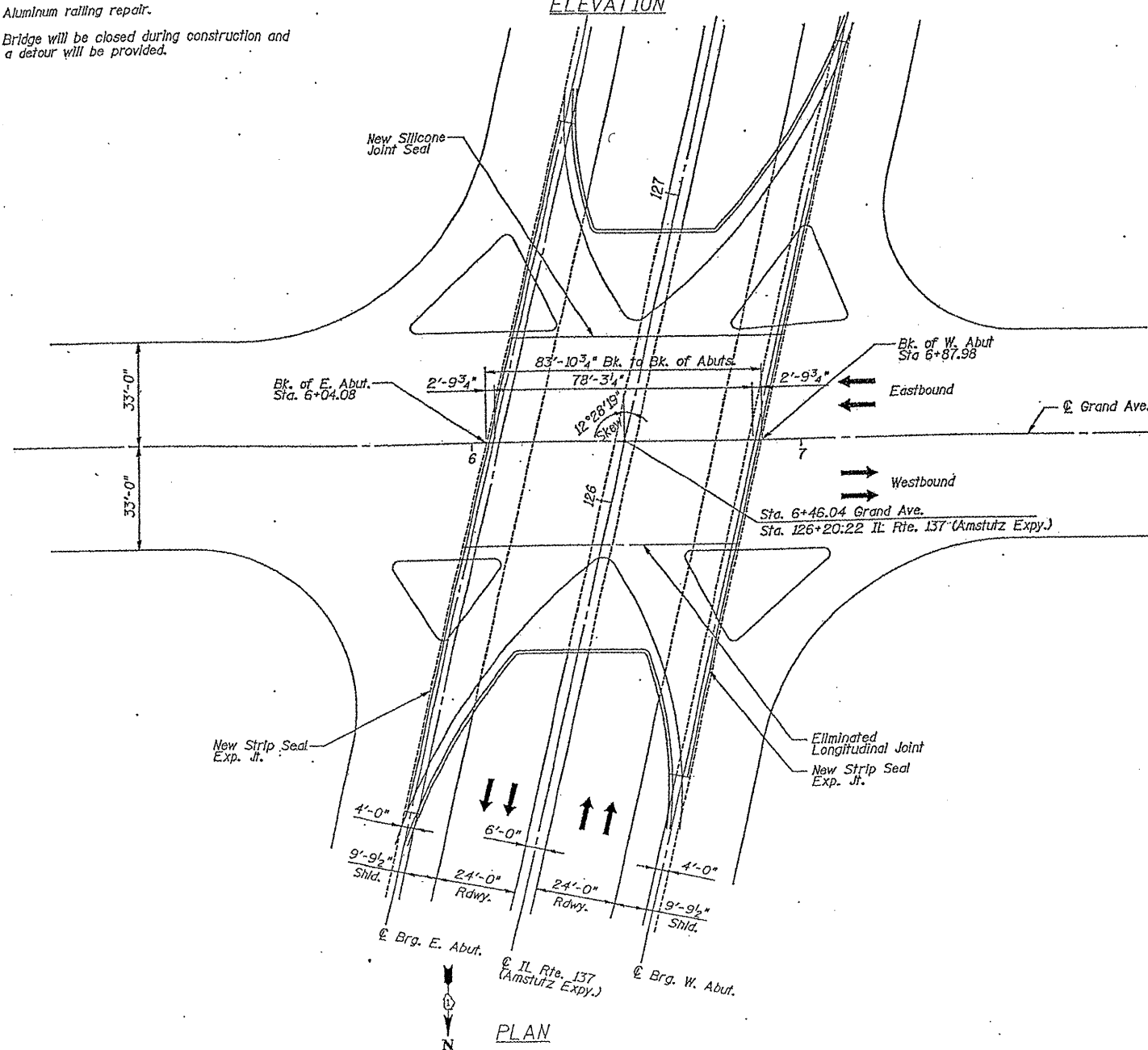
TOTAL BILL OF MATERIAL

| ITEM | UNIT | QUANTITY |
|--|---------|----------|
| CONCRETE REMOVAL | CU. YD. | 120.0 |
| PROTECTIVE SHIELD | SQ. YD. | 1,362 |
| CONCRETE SUPERSTRUCTURE | CU. YD. | 132.0 |
| BRIDGE DECK GROOVING | SQ. YD. | 1,130 |
| PROTECTIVE COAT | SQ. YD. | 1,630 |
| FURNISHING AND ERECTING STRUCTURAL STEEL | POUND | 5,880 |
| JACK AND REMOVE EXISTING BEARINGS | EACH | 27 |
| REINFORCEMENT BARS, EPOXY COATED | POUND | 15,980 |
| PREFORMED JOINT STRIP SEAL | FOOT | 488 |
| ELASTOMERIC BEARING ASSEMBLY, TYPE I | EACH | 27 |
| ANCHOR BOLTS, 1" | EACH | 50 |
| ANCHOR BOLTS, 1/2" | EACH | 4 |
| POLYMER CONCRETE | CU. FT. | 14 |
| SILICONE JOINT SEALER, 1" | FOOT | 83 |
| BRIDGE DECK LATEX CONCRETE OVERLAY, 2 1/2" | SQ. YD. | 1,058 |
| STRUCTURAL REPAIR OF CONCRETE (DEPTH >5") | SQ. FT. | 80 |
| STRUCTURAL REPAIR OF CONCRETE (DEPTH <5") | SQ. FT. | 818 |
| BRIDGE DECK HYDRO-SCARIFICATION, 1/2" | SQ. YD. | 1,016 |
| DECK SLAB REPAIR (FULL DEPTH, TYPE I) | SQ. YD. | 3 |
| DECK SLAB REPAIR (FULL DEPTH, TYPE II) | SQ. YD. | 32 |
| ALUMINUM RAILING, SPECIAL | FOOT | 26 |

FOR INFORMATION ONLY

ILLINOIS DEPARTMENT OF TRANSPORTATION

EXISTING BRIDGE PLAN
SN 049-0118
(LOC. 2)

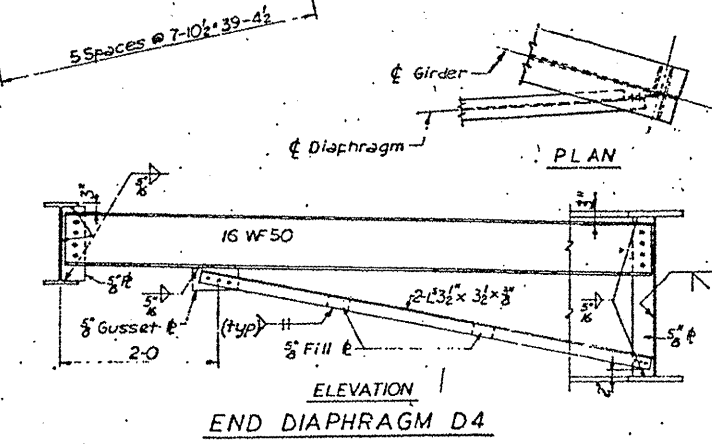
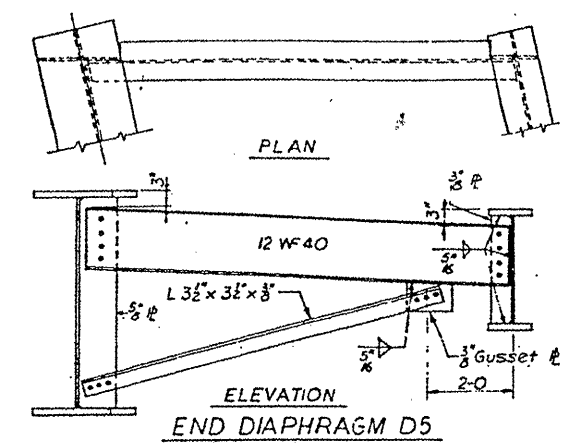


PLAN

| | | | | |
|------------------|------------------------|-----------------------|--------------------|--------------------|
| ROUTE VARIOUS | SECTION 2009-079 BP | COUNTY COOK & LAKE | TOTAL SHEETS 25 | SHEET NUMBER 14 |
|------------------|------------------------|-----------------------|--------------------|--------------------|

Contract 60116

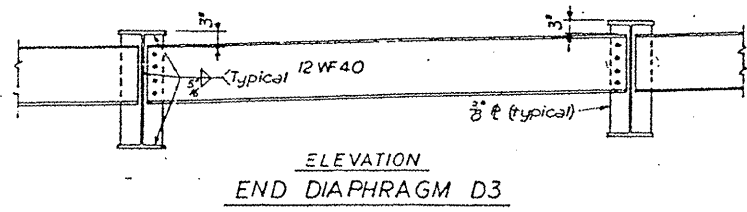
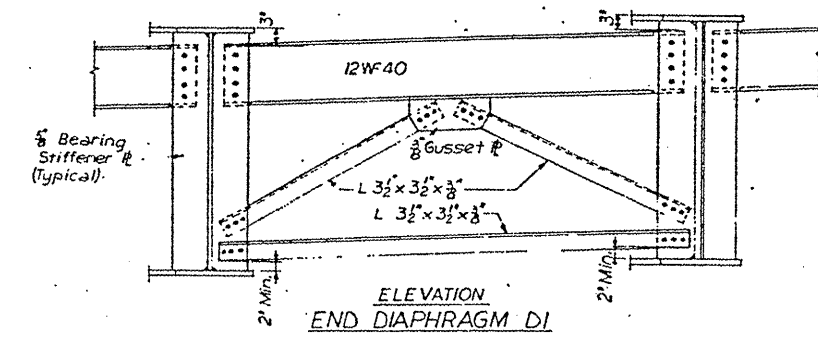
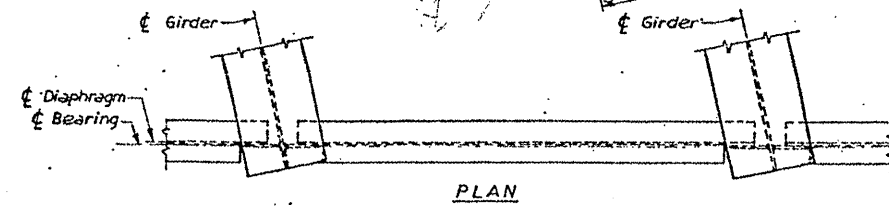
FOR INFORMATION ONLY



FRAMING PLAN

TYPICAL STIFFENER CUT

ELEVATION INTERMEDIATE DIAPHRAGM D2

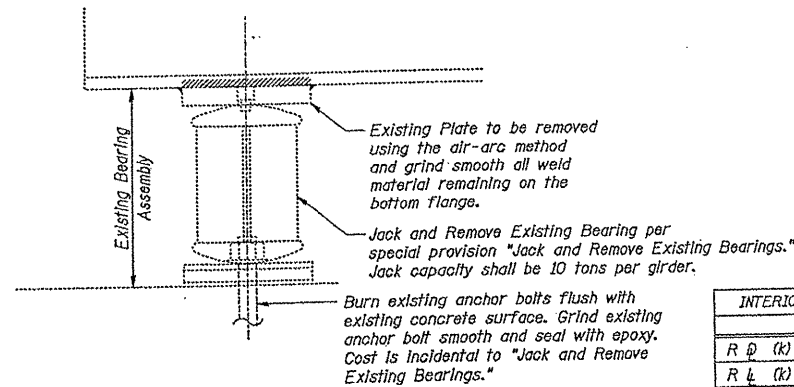


NOTES:
 For Elevation for Girders 6 thru 22 see Sh. No. 16
 For General Plan see Sh. No. 7
 For Type of Bearing, for Stations, Angles and Lengths for Girders 1E thru 28W see Sh. No. 16
 For Details of Girders 5, 23 and R.W. see Sh. No. 17
 For Details of Girders S.W., N.E. and S.E. see Sh. No. 18

ILLINOIS DEPARTMENT OF TRANSPORTATION
 EXISTING BRIDGE PLAN
 SN 049-0118
 (LOC. 2)

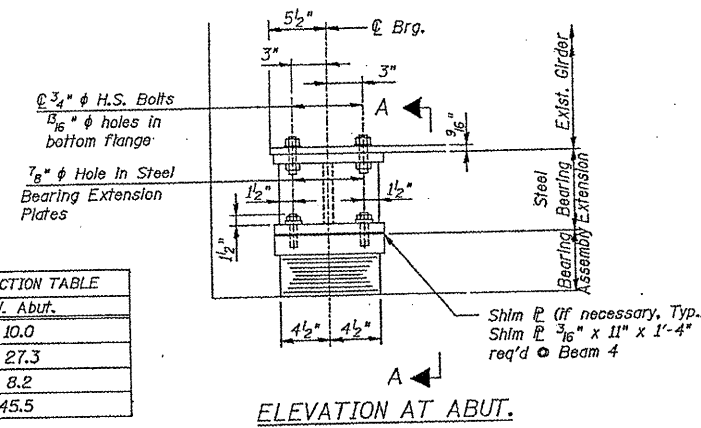
| | | | | |
|---------|-------------|-------------|--------------|--------------|
| ROUTE | SECTION | COUNTY | TOTAL SHEETS | SHEET NUMBER |
| VARIOUS | 2009-079 BP | COOK & LAKE | 26 | 15 |

Contract 60116

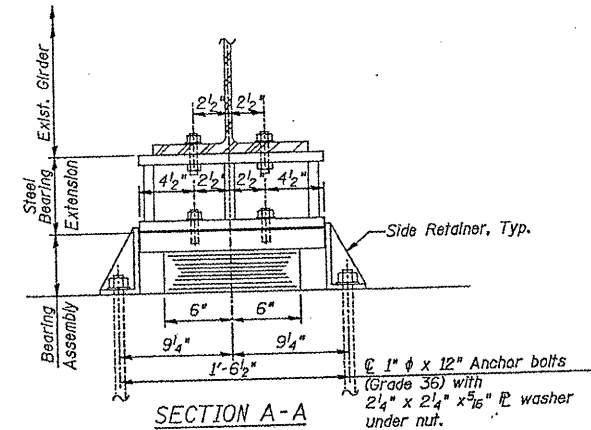


EXISTING BEARING REMOVAL DETAIL AT W. ABUT.
GIRDERS 2 THRU 4 & 24 THRU 28

| | W. ABUT. |
|----------------------|----------|
| R _D (K) | 10.0 |
| R _L (K) | 27.3 |
| Imp. (K) | 8.2 |
| R _{TOT} (K) | 45.5 |



TYPE I ELASTOMERIC EXP. BRG. AT W. ABUT.
GIRDERS 2 THRU 4 & 24 THRU 28



Notes:
Anchor bolts shall be ASTM F1554 all-thread (or an Engineer-approved alternate material) of the grade(s) and diameter(s) specified. ASTM A307 Grade C anchor bolts may be used in lieu of ASTM F1554 Grade 36 (Fy=36ksi). The corresponding specified grade of AASHTO M314 anchor bolts may be used in lieu of ASTM F1554.

Drilled and set anchor bolts shall be installed according to Article 52.106 of the Standard Specifications.

Steel bearing extensions, shim plates, and connection bolts are included with Furnishing and Erecting Structural Steel.

Side retainers and other steel members required for the bearing assembly shall be included in the cost of Elastomeric Bearing Assembly, Type I.

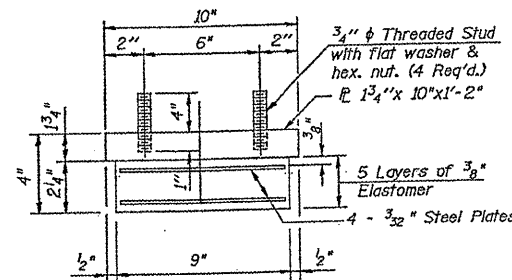
The structural steel plates of the Bearing Assembly and the Steel Bearing Extension shall conform to the requirements of AASHTO M 270 Grade 36.

Two 1/8" adjusting shims shall be provided for each bearing in addition to all other plates or shims and placed as shown on the bearing details.

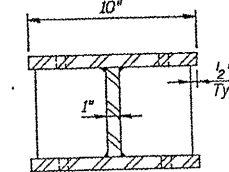
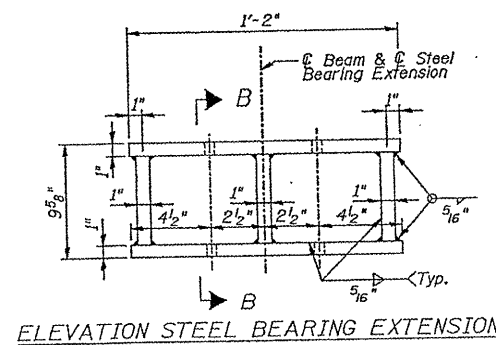
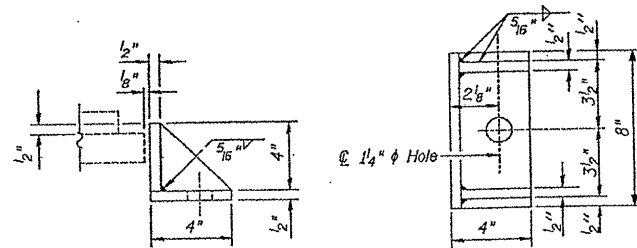
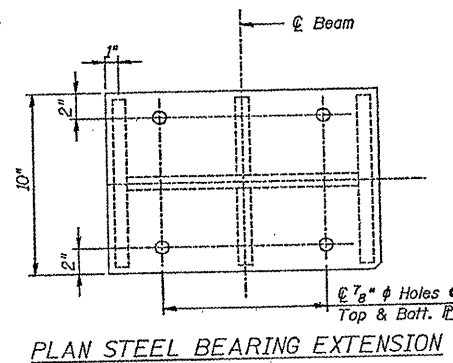
All bearing plates, steel bearing extensions, side retainers, anchor bolts, nuts, and washers shall be galvanized according to AASHTO M111 or M232 (as applicable).

Prior to ordering any material, the Contractor shall verify in the field all bearing height dimensions.

Diaphragm removal and replacement may be required to facilitate drilling holes. Cost included with Furnishing and Erecting Structural Steel.



Note:
Shim plates shall not be placed under Bearing Assembly.



STEEL BEARING EXTENSION

BILL OF MATERIAL

| Item | Unit | Total |
|--|-------|-------|
| Furnishing and Erecting Structural Steel | Pound | 1,380 |
| Jack and Remove Existing Bearings | Each | 8 |
| Elastomeric Bearing Assembly, Type I | Each | 8 |
| Anchor Bolts, 1" | Each | 16 |

FOR INFORMATION ONLY

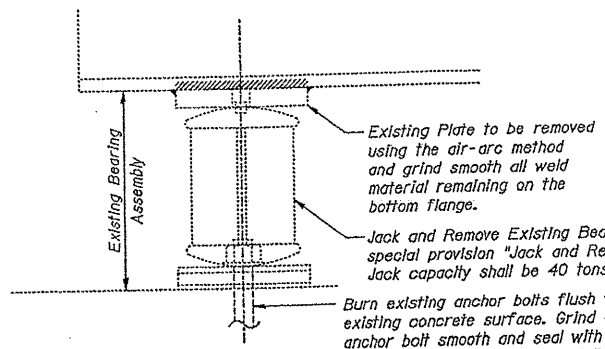
ILLINOIS DEPARTMENT OF TRANSPORTATION

EXISTING BRIDGE PLAN
SN 049-0118
(LOC. 2)

| ROUTE | SECTION | COUNTY | TOTAL SHEETS | SHEET NUMBER |
|---------|-------------|-------------|--------------|--------------|
| VARIOUS | 2009-079 BP | COOK & LAKE | 26 | 16 |

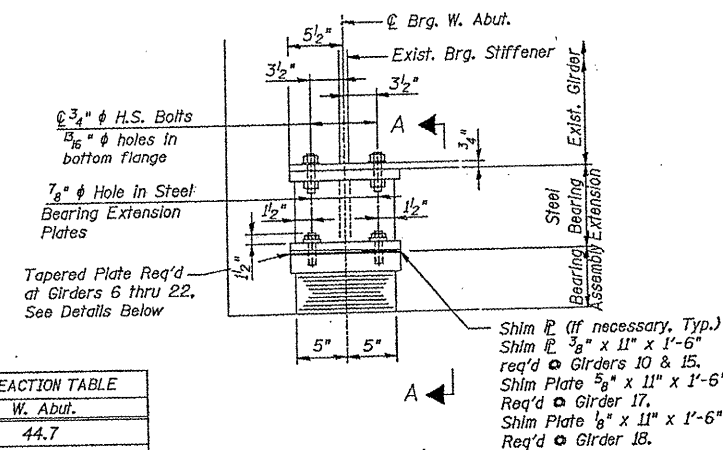
Contract 60116

FOR INFORMATION ONLY

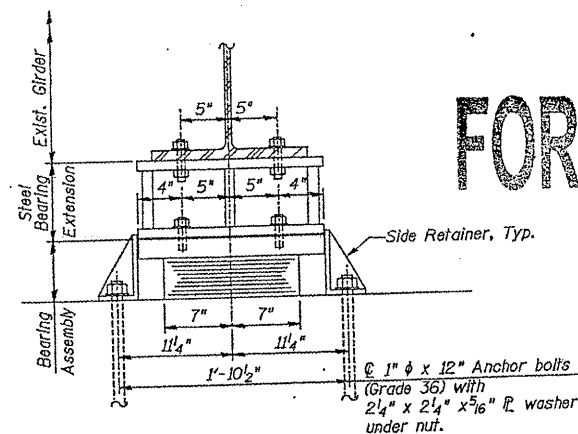


EXISTING BEARING REMOVAL DETAIL AT W. ABUT.
GIRDERS 6 THRU 22

| | W. Abut. |
|------------------------|----------|
| R ₁ (k) | 44.7 |
| R ₂ (k) | 46.1 |
| Imp. (k) | 11.4 |
| R _{Total} (k) | 102.2 |



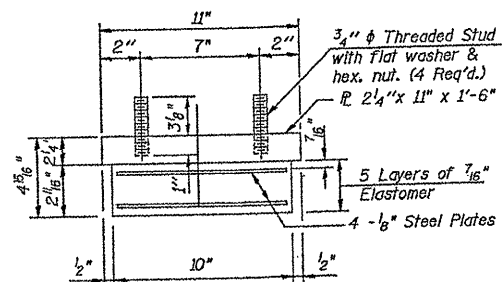
ELEVATION AT ABUT.



SECTION A-A

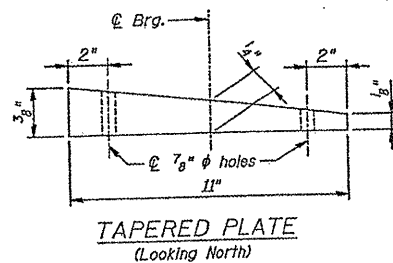
TYPE I ELASTOMERIC EXP. BRG. AT W. ABUT.
GIRDERS 6 THRU 22

Notes:
Anchor bolts shall be ASTM F1554 all-thread (or an Engineer-approved alternate material) of the grade(s) and diameter(s) specified. ASTM A307 Grade C anchor bolts may be used in lieu of ASTM F1554 Grade 36 (F_y=36ksi). The corresponding specified grade of AASHTO M314 anchor bolts may be used in lieu of ASTM F1554.
Drilled and set anchor bolts shall be installed according to Article 521.06 of the Standard Specifications.
Steel bearing extensions, shim plates, and connection bolts are included with Furnishing and Erecting Structural Steel.
Side retainers and other steel members required for the bearing assembly shall be included in the cost of Elastomeric Bearing Assembly, Type I.
The structural steel plates of the Bearing Assembly and the Steel Bearing Extension shall conform to the requirements of AASHTO M 270 Grade 36.
Two 1/2" adjusting shims shall be provided for each bearing in addition to all other plates or shims and placed as shown on the bearing details.
All bearing plates, steel bearing extensions, side retainers, anchor bolts, nuts, and washers shall be galvanized according to AASHTO M111 or M232 (as applicable).
Prior to ordering any material, the Contractor shall verify in the field all bearing height dimensions.
Diaphragm removal and replacement may be required to facilitate drilling holes. Cost included with Furnishing and Erecting Structural Steel.

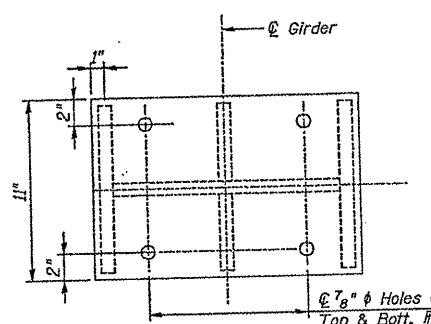


BEARING ASSEMBLY

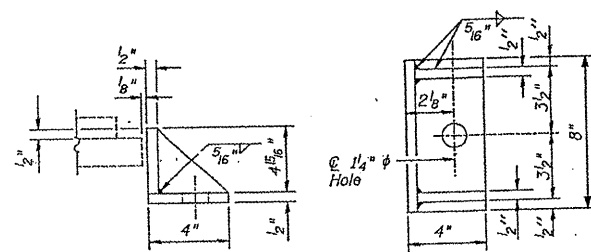
Notes:
Shim plates shall not be placed under Bearing Assembly.



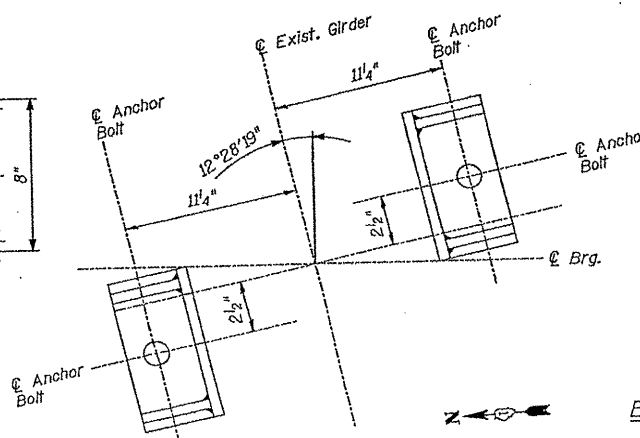
TAPERED PLATE
(Looking North)



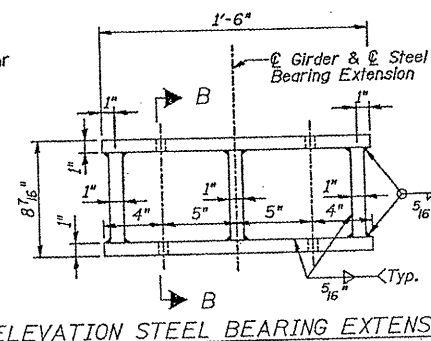
PLAN STEEL BEARING EXTENSION



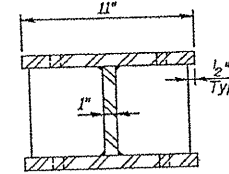
SIDE RETAINER
Equivalent rolled angle with stiffeners will be allowed in lieu of welded plates.



OFFSET SIDE RETAINER PLAN



ELEVATION STEEL BEARING EXTENSION



SECTION B-B

STEEL BEARING EXTENSION

BILL OF MATERIAL

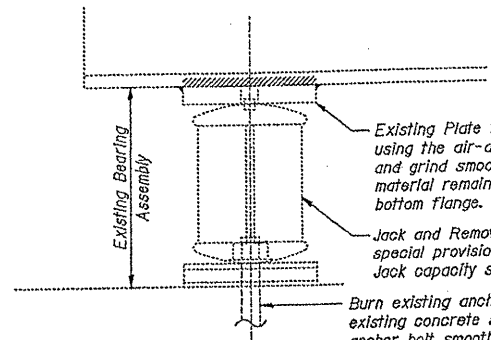
| Item | Unit | Total |
|--|-------|-------|
| Furnishing and Erecting Structural Steel | Pound | 3,880 |
| Jack and Remove Existing Bearings | Each | 17 |
| Elastomeric Bearing Assembly, Type I | Each | 17 |
| Anchor Bolts, 1" | Each | 34 |

ILLINOIS DEPARTMENT OF TRANSPORTATION

EXISTING BRIDGE PLAN
SN 049-0118
(LOC. 2)

| | | | | |
|------------------|------------------------|-----------------------|--------------------|--------------------|
| ROUTE VARIOUS | SECTION 2009-079 BP | COUNTY COOK & LAKE | TOTAL SHEETS 26 | SHEET NUMBER 17 |
|------------------|------------------------|-----------------------|--------------------|--------------------|

Contract 60116



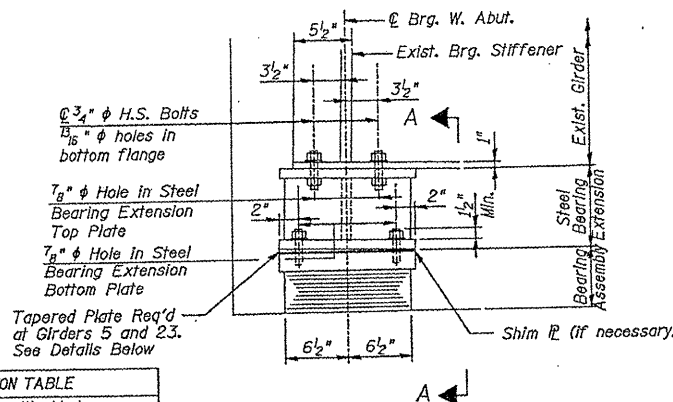
Existing Plate to be removed using the air-arc method and grind smooth all weld material remaining on the bottom flange.

Jack and Remove Existing Bearing per special provision "Jack and Remove Existing Bearings." Jack capacity shall be 90 tons per girder.

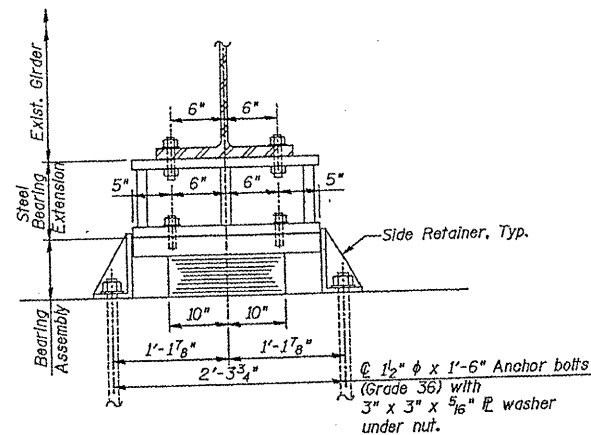
Burn existing anchor bolts flush with existing concrete surface. Grind existing anchor bolt smooth and seal with epoxy. Cost is incidental to "Jack and Remove Existing Bearings."

EXISTING BEARING REMOVAL DETAIL AT W. ABUT.
GIRDERS 5 AND 23

| GIRDER REACTION TABLE | |
|------------------------|----------|
| | W. Abut. |
| R _D (k) | 110.1 |
| R _L (k) | 45.2 |
| Imp. (k) | 11.1 |
| R _{Total} (k) | 166.4 |



ELEVATION AT ABUT.



SECTION A-A

TYPE I ELASTOMERIC EXP. BRG. AT W. ABUT.
GIRDERS 5 AND 23

Notes:

Anchor bolts shall be ASTM F1554 all-thread (or an Engineer-approved alternate material) of the grade(s) and diameter(s) specified. ASTM A307 Grade C anchor bolts may be used in lieu of ASTM F1554 Grade 36 (Fy=36ksi). The corresponding specified grade of AASHTO M314 anchor bolts may be used in lieu of ASTM F1554.

Drilled and set anchor bolts shall be installed according to Article 521.06 of the Standard Specifications.

Steel bearing extensions, shim plates, and connection bolts are included with Furnishing and Erecting Structural Steel.

Side retainers and other steel members required for the bearing assembly shall be included in the cost of Elastomeric Bearing Assembly, Type I.

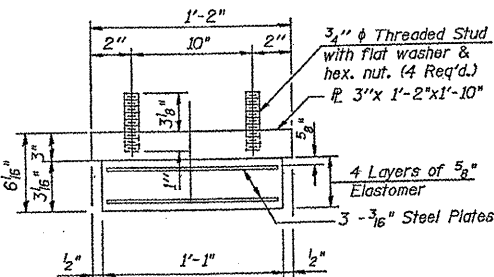
The structural steel plates of the Bearing Assembly and the Steel Bearing Extension shall conform to the requirements of AASHTO M 270 Grade 36.

Two 1/8" adjusting shims shall be provided for each bearing in addition to all other plates or shims and placed as shown on the bearing details.

All bearing plates, steel bearing extensions, side retainers, anchor bolts, nuts, and washers shall be galvanized according to AASHTO M111 or M232 (as applicable).

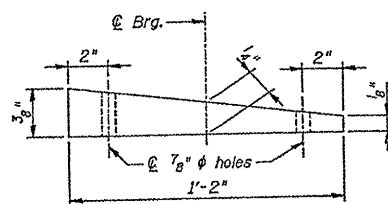
Prior to ordering any material, the Contractor shall verify in the field all bearing height dimensions.

Diaphragm removal and replacement may be required to facilitate drilling holes. Cost included with Furnishing and Erecting Structural Steel.

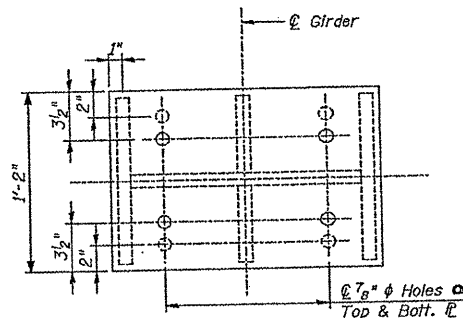


BEARING ASSEMBLY

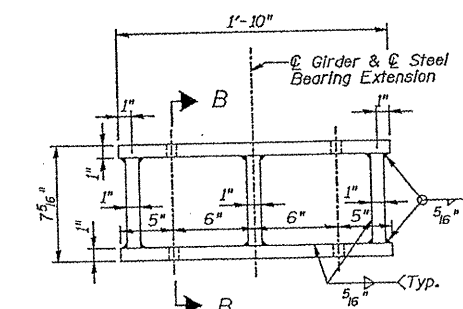
Note: Shim plates shall not be placed under Bearing Assembly.



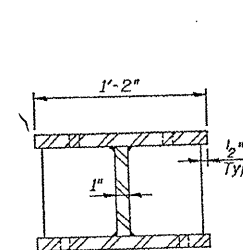
TAPERED PLATE
(Looking North)



PLAN STEEL BEARING EXTENSION



ELEVATION STEEL BEARING EXTENSION

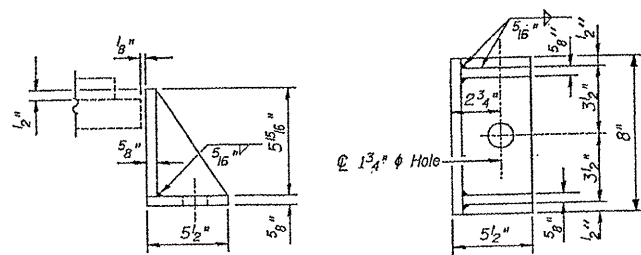


SECTION B-B

STEEL BEARING EXTENSION

BILL OF MATERIAL

| Item | Unit | Total |
|--|-------|-------|
| Furnishing and Erecting Structural Steel | Pound | 620. |
| Jack and Remove Existing Bearings | Each | 2 |
| Elastomeric Bearing Assembly, Type I | Each | 2 |
| Anchor Bolts, 1/2" | Each | 4 |



SIDE RETAINER
Equivalent rolled angle with stiffeners will be allowed in lieu of welded plates.

FOR INFORMATION ONLY

ILLINOIS DEPARTMENT OF TRANSPORTATION

EXISTING BRIDGE PLAN
SN 049-0118
(LOC. 2)

ROUTE
VARIOUS

SECTION
2009-079 BP

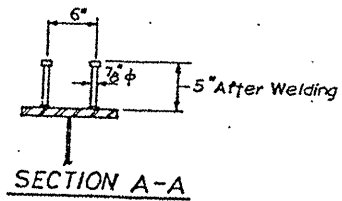
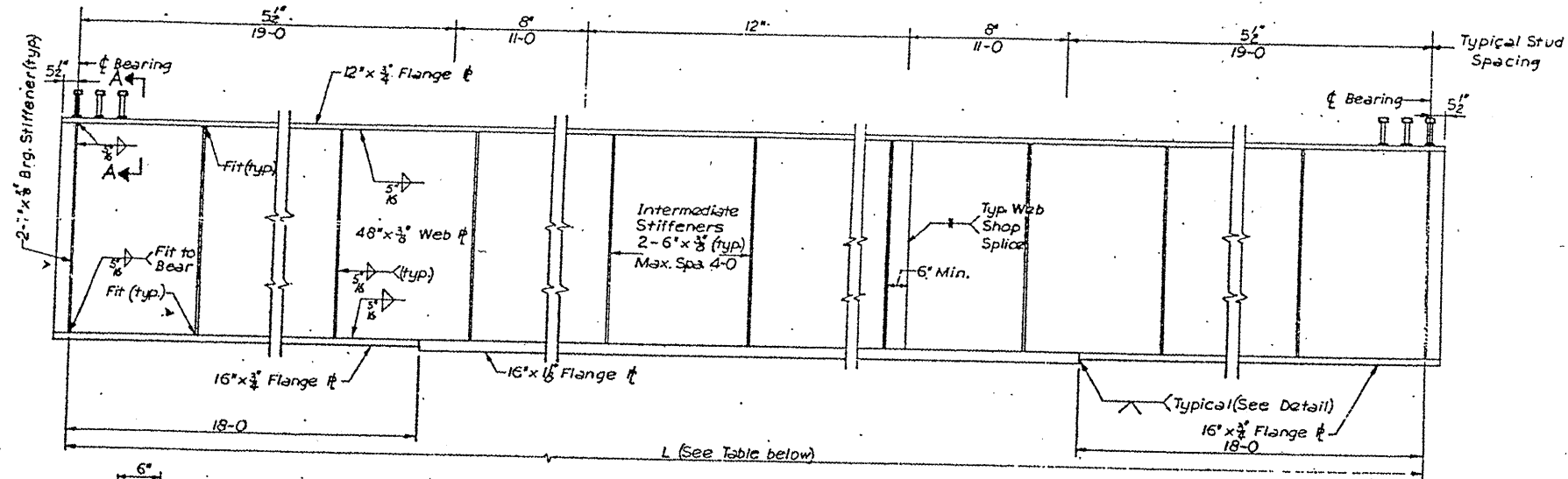
COUNTY
COOK & LAKE

TOTAL
SHEETS
26

SHEET
NUMBER
18

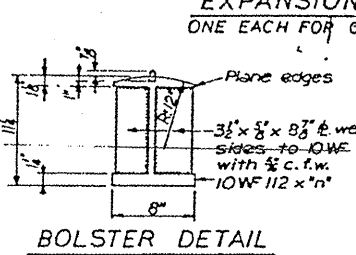
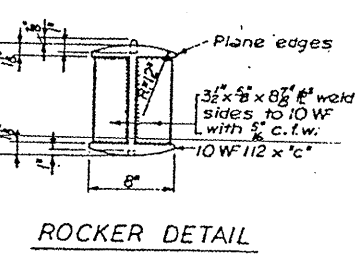
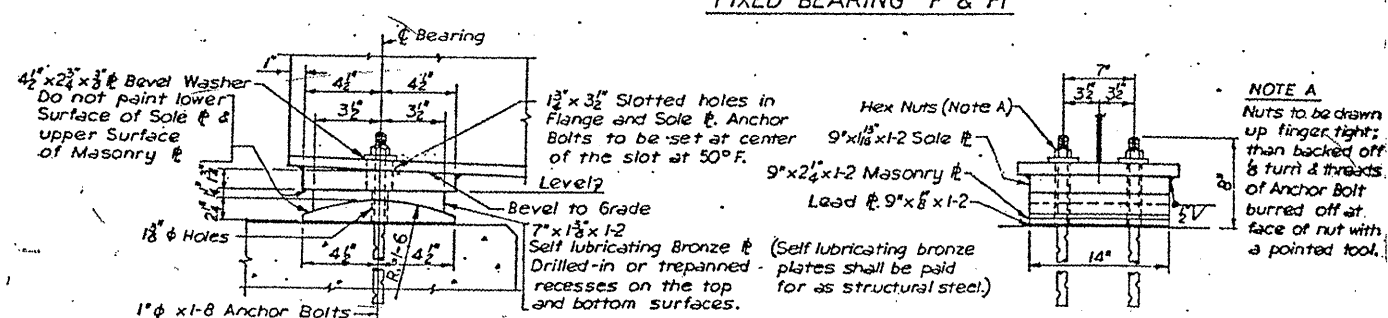
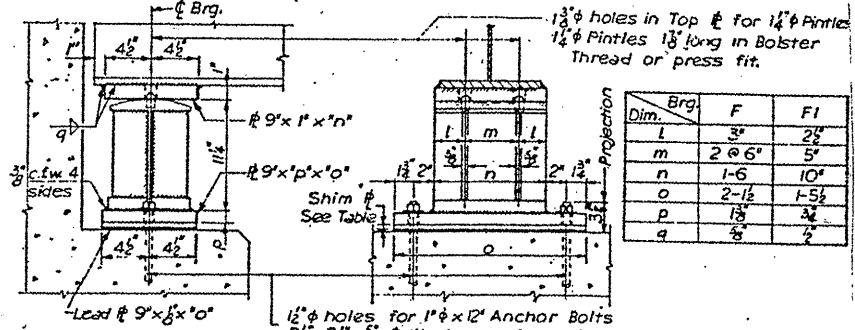
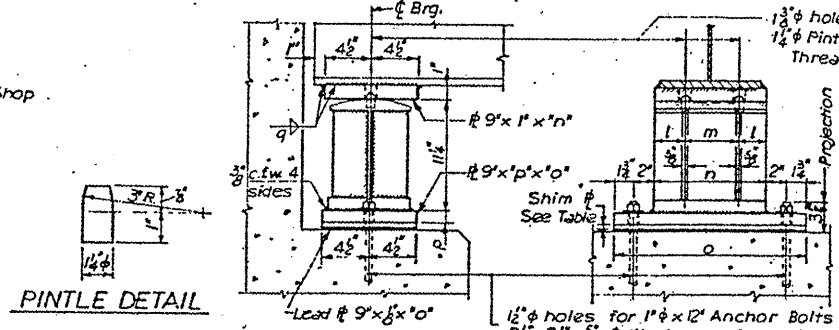
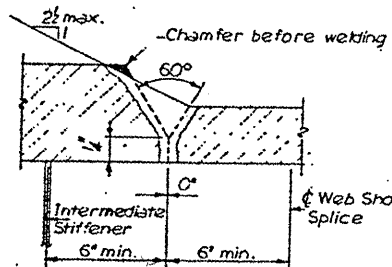
Contract 60116

FOR INFORMATION ONLY



| Girder or WF | AT EAST ABUTMENT | | | | AT WEST ABUTMENT | | | | L (Span @ to Bearing) | Shape |
|--------------|--|-----------------------------------|-----------------------|--------------|--|-----------------------------------|-----------------------|--------------|-----------------------|------------------------------|
| | Station on Grand Ave. perpendicular to @ of Brg. | Angle b/n. Pt. of Tang. @ of Brg. | Elev Top of Web or WF | Type of Brg. | Station on Grand Ave. perpendicular to @ of Brg. | Angle b/n. Pt. of Tang. @ of Brg. | Elev Top of Web or WF | Type of Brg. | | |
| 1E | 5+84.28 | 76°26'07" | 627.39 | FI | - | - | - | - | 6'-4 1/2" * | 24 WF 68 |
| 2E | 5+86.18 | 76°31'01" | 627.47 | FI | - | - | - | - | 9'-4" * | |
| 3E | 5+88.06 | 76°35'54" | 627.57 | FI | - | - | - | - | 12'-4 1/2" * | |
| 4E | 5+89.93 | 76°40'48" | 627.66 | FI | - | - | - | - | 15'-4 1/2" * | Non-Comp. Girder, See Sh. 17 |
| 2W | - | - | - | - | 6+64.73 | 76°41'56" | 628.76 | EI | 6'-4 1/2" * | |
| 3W | - | - | - | - | 6+66.58 | 76°46'45" | 628.91 | EI | 6'-1 1/2" * | |
| 4W | - | - | - | - | 6+68.43 | 76°51'34" | 629.02 | EI | 9'-6 1/2" * | Composite Girder, See above |
| 5 | 5+91.79 | 76°45'41" | 627.71 | F | 6+70.26 | 76°56'24" | 629.07 | E | 12'-10 1/2" * | |
| 6 | 5+93.63 | 76°50'34" | 627.88 | F | 6+72.08 | 77°01'13" | 629.22 | E | 78'-5 1/2" * | |
| 7 | 5+95.47 | 76°55'27" | 627.99 | F | 6+73.89 | 77°06'02" | 629.34 | E | 78'-5 1/2" * | |
| 8 | 5+97.29 | 77°00'20" | 628.07 | F | 6+75.69 | 77°10'50" | 629.48 | E | 78'-4 1/2" * | |
| 9 | 5+99.10 | 77°05'13" | 628.15 | F | 6+77.47 | 77°15'39" | 629.60 | E | 78'-4 1/2" * | |
| 10 | 5+99.79 | 77°07'04" | 628.19 | F | 6+78.15 | 77°17'29" | 629.64 | E | 78'-4 1/2" * | |
| 11 | 6+01.58 | 77°11'57" | 628.29 | F | 6+79.92 | 77°22'18" | 629.74 | E | 78'-4 1/2" * | |
| 12 | 6+03.37 | 77°16'50" | 628.39 | F | 6+81.68 | 77°27'06" | 629.85 | E | 78'-3 1/2" * | |
| 13 | 6+05.14 | 77°21'42" | 628.49 | F | 6+83.43 | 77°31'55" | 629.95 | E | 78'-3 1/2" * | |
| 14 | 6+06.90 | 77°26'35" | 628.59 | F | 6+85.16 | 77°36'43" | 630.05 | E | 78'-3 1/2" * | |
| 15 | 6+08.65 | 77°31'27" | 628.56 | F | 6+86.89 | 77°41'32" | 630.01 | E | 78'-2 1/2" * | |
| 16 | 6+10.38 | 77°36'19" | 628.52 | F | 6+88.60 | 77°46'20" | 629.97 | E | 78'-2 1/2" * | |
| 17 | 6+12.11 | 77°41'12" | 628.48 | F | 6+90.30 | 77°51'08" | 629.94 | E | 78'-2 1/2" * | |
| 18 | 6+13.82 | 77°46'04" | 628.45 | F | 6+91.99 | 77°55'56" | 629.90 | E | 78'-2 1/2" * | |
| 19 | 6+14.47 | 77°47'55" | 628.43 | F | 6+92.63 | 77°57'46" | 629.89 | E | 78'-2 1/2" * | |
| 20 | 6+16.17 | 77°52'47" | 628.36 | F | 6+94.30 | 78°02'34" | 629.78 | E | 78'-1 1/2" * | |
| 21 | 6+17.85 | 77°57'39" | 628.28 | F | 6+95.97 | 78°07'21" | 629.68 | E | 78'-1 1/2" * | |
| 22 | 6+19.53 | 78°02'31" | 628.12 | F | 6+97.62 | 78°12'09" | 629.57 | E | 78'-1 1/2" * | |
| 23 | 6+21.19 | 78°07'22" | 628.02 | F | 6+99.26 | 78°16'57" | 629.47 | E | 78'-0 1/2" * | |
| 24E | 6+22.84 | 78°12'14" | 627.98 | FI | - | - | - | - | 11'-4 1/2" * | Non-Comp. Girder, See Sh. 17 |
| 25E | 6+24.48 | 78°17'05" | 627.89 | FI | - | - | - | - | 7'-10 1/2" * | |
| 24W | - | - | - | - | 7+00.88 | 78°21'44" | 629.31 | EI | 17'-5 1/2" * | |
| 25W | - | - | - | - | 7+02.50 | 78°26'32" | 629.17 | EI | 14'-8 1/2" * | |
| 26W | - | - | - | - | 7+04.10 | 78°31'19" | 629.05 | EI | 12'-0 1/2" * | |
| 27W | - | - | - | - | 7+05.70 | 78°36'07" | 628.91 | EI | 9'-3" * | |
| 28W | - | - | - | - | 7+07.28 | 78°40'54" | 628.78 | EI | 6'-5 1/2" * | |

NOTE: Shop Flange Splices permitted only at changes in flange thickness.

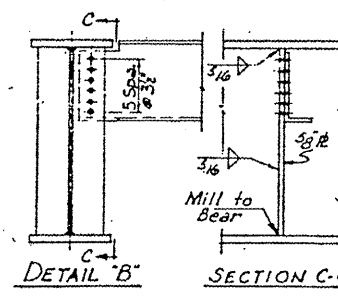
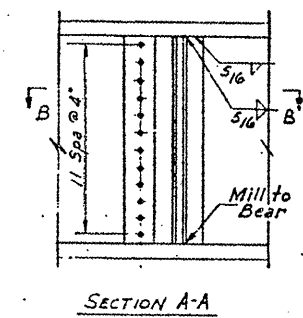
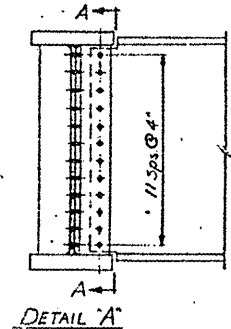
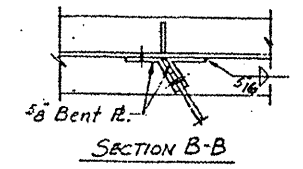
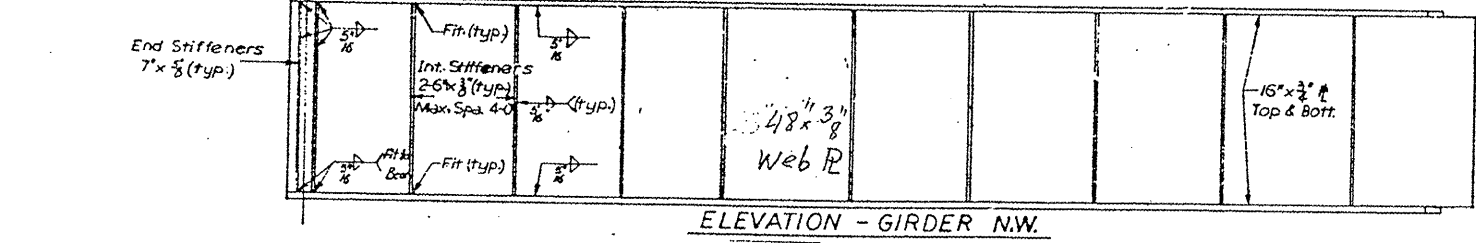
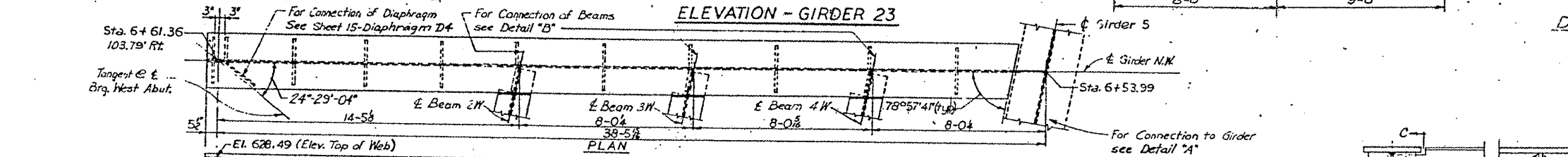
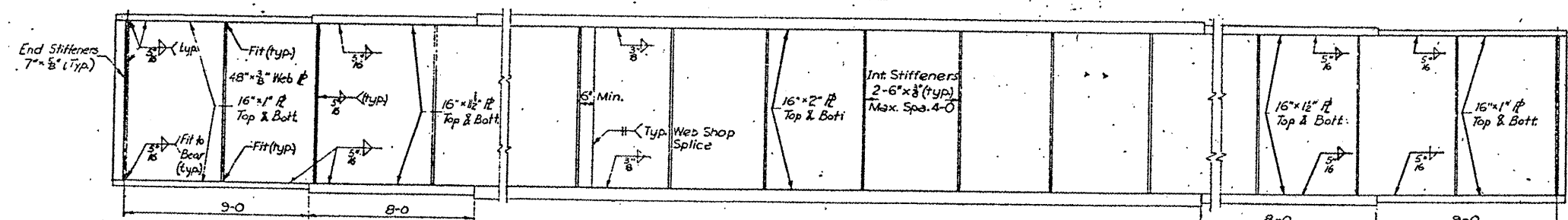
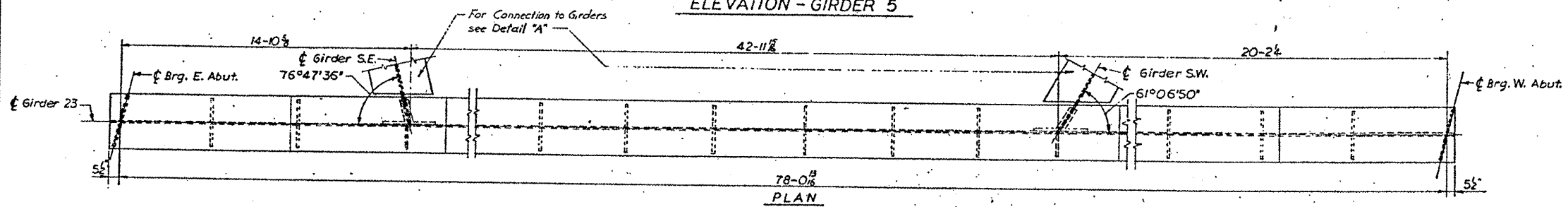
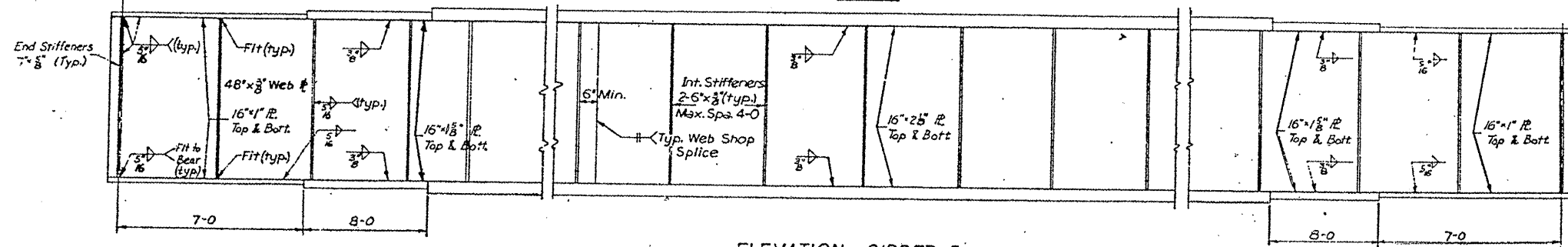
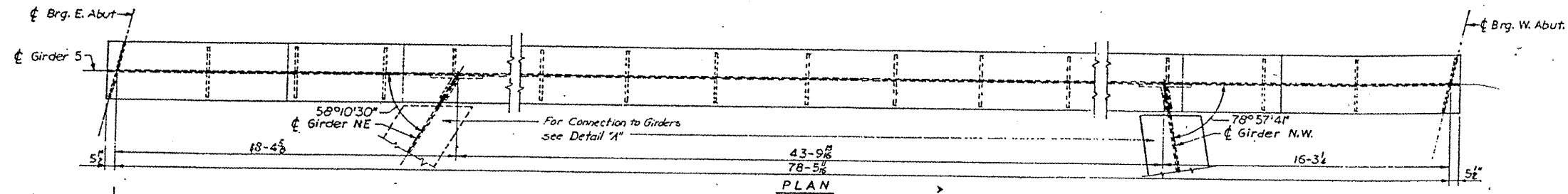


ILLINOIS DEPARTMENT OF TRANSPORTATION
EXISTING BRIDGE PLAN
SN 049-0118
(LOC. 2)

| | | | | |
|---------|-------------|-------------|--------------|--------------|
| ROUTE | SECTION | COUNTY | TOTAL SHEETS | SHEET NUMBER |
| VARIOUS | 2009-079 BP | COOK & LAKE | 26 | 19 |

Contract 60116

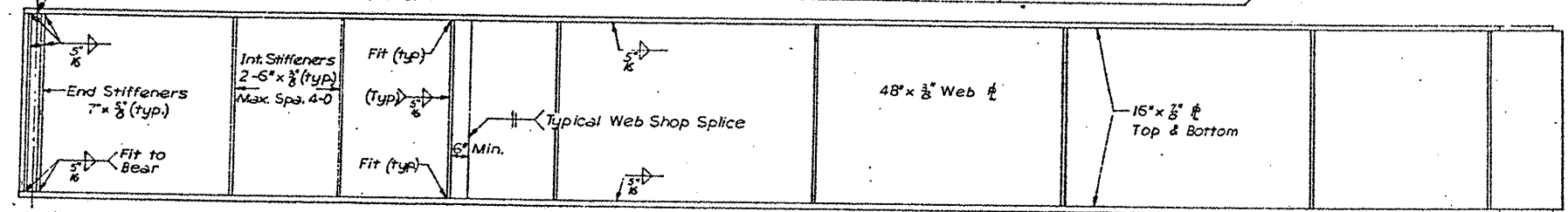
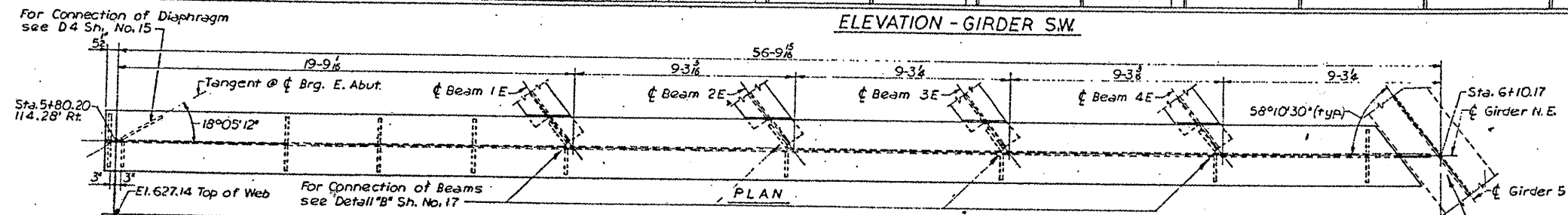
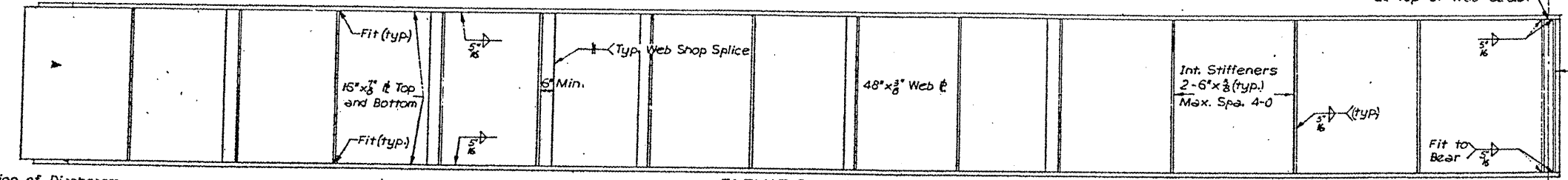
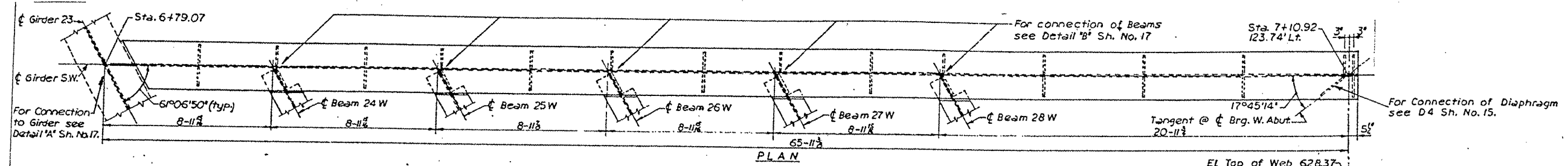
FOR INFORMATION ONLY



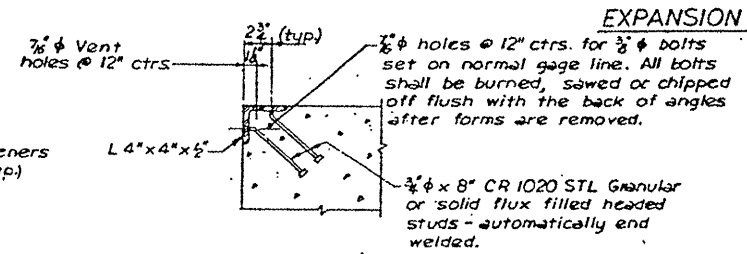
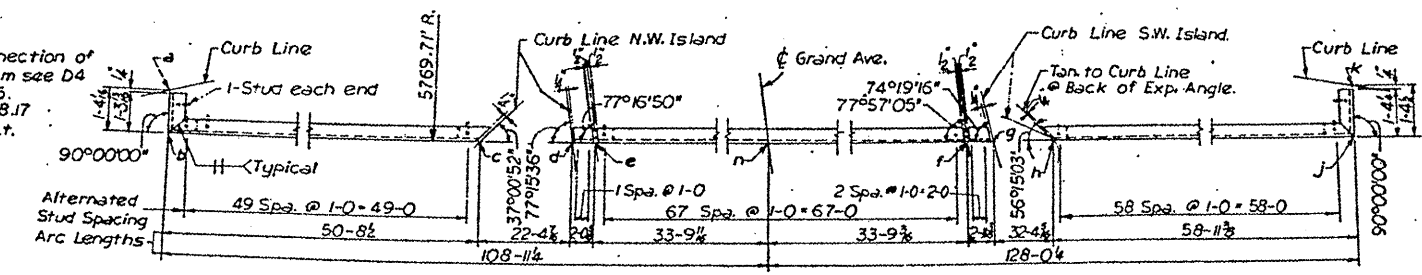
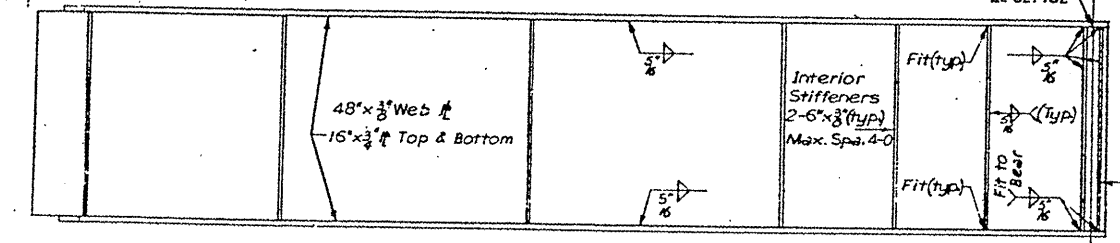
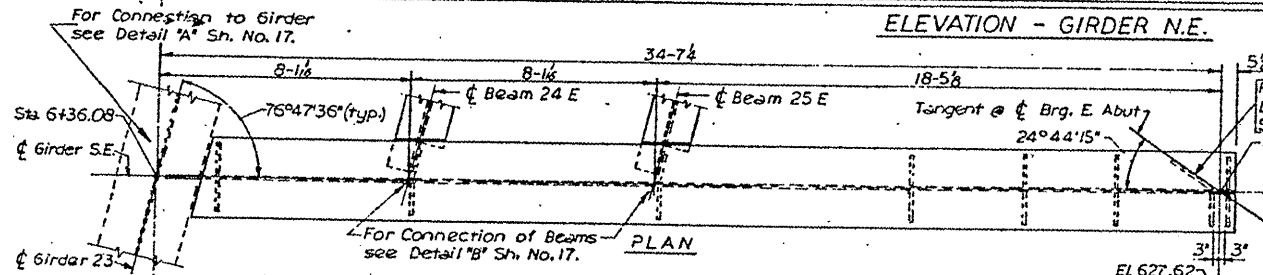
ILLINOIS DEPARTMENT OF TRANSPORTATION
EXISTING BRIDGE PLAN
 SN 049-0118
 (LOC. 2)

| | | | | |
|------------------|------------------------|-----------------------|--------------------|--------------------|
| ROUTE VARIOUS | SECTION 2009-079 BP | COUNTY COOK & LAKE | TOTAL SHEETS 26 | SHEET NUMBER 20 |
|------------------|------------------------|-----------------------|--------------------|--------------------|

Contract 60116



FOR INFORMATION ONLY

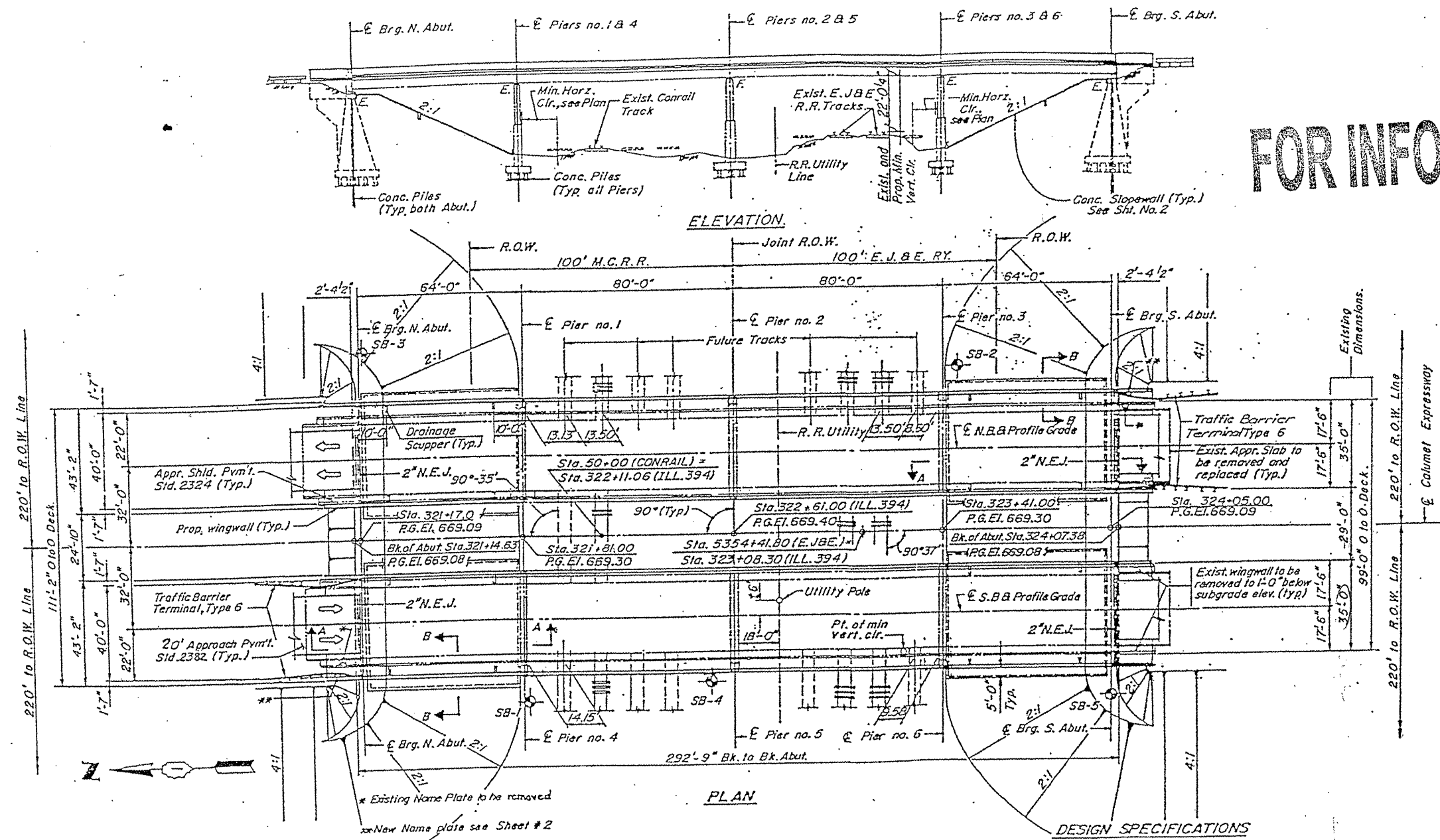


ILLINOIS DEPARTMENT OF TRANSPORTATION
EXISTING BRIDGE PLAN
SN 049-0118
(LOC. 2)

| | | | | |
|---------|-------------|-------------|--------------|--------------|
| ROUTE | SECTION | COUNTY | TOTAL SHEETS | SHEET NUMBER |
| VARIOUS | 2009-079 BP | COOK & LAKE | 26 | 21 |

Contract 60116

FOR INFORMATION ONLY



PLAN

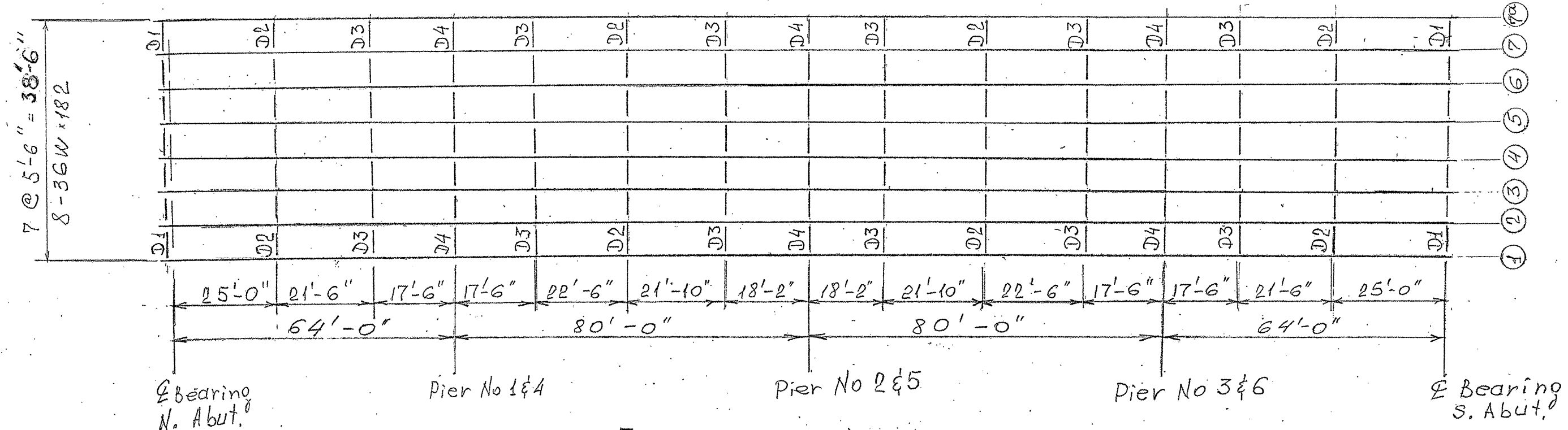
Note:
 For view A-A and section B-B see sheet #2.
 ⊕ Indicates New Soil Borings.

DESIGN SPECIFICATIONS
 1983 AASHTO with 1984 thru 1988 interim specifications
 LOADING HS 20-44
 DESIGN STRESSES
 (New Construction)
 FIELD UNITS
 f_c = 3500 P.S.I.
 f_y = 60,000 P.S.I. (All reinforcement)
 f_s = 20,000 P.S.I. (Structural steel)
 EXISTING STRUCTURE
 f_c = 18,000 P.S.I. (Structural steel)
 f_s = 20,000 P.S.I. (Reinforcement)

ILLINOIS DEPARTMENT OF TRANSPORTATION
 EXISTING BRIDGE PLAN
 SN 016-1041 AND 016-0456
 (LOC. 3)

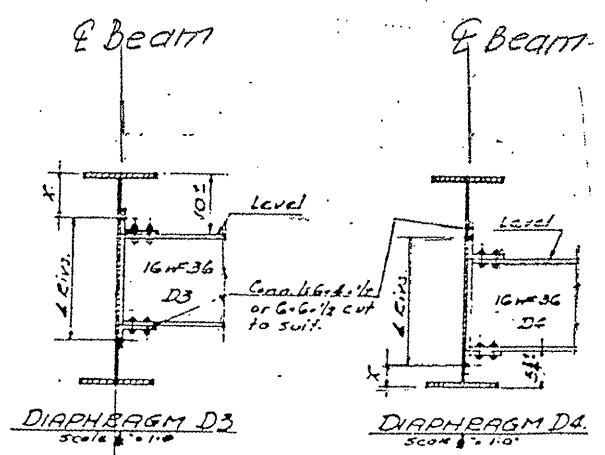
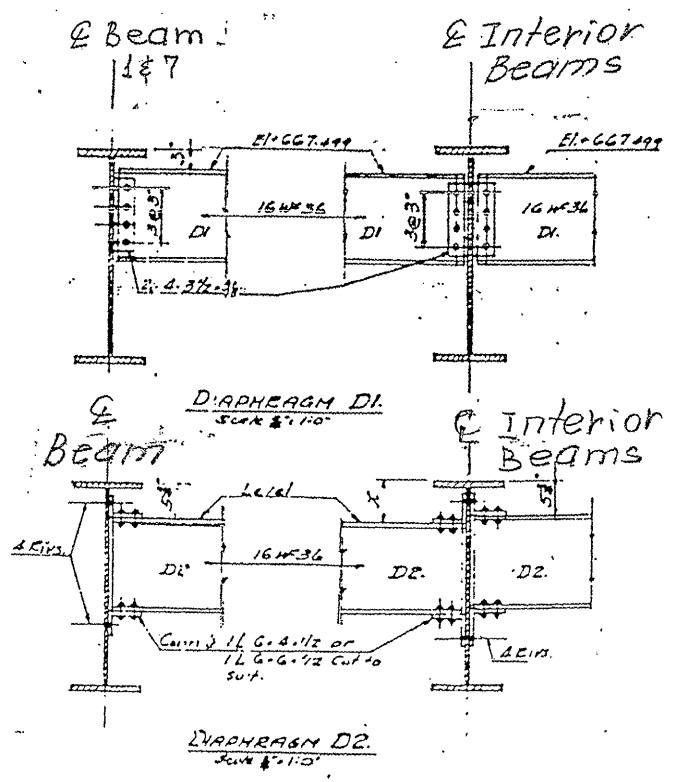
| ROUTE | SECTION | COUNTY | TOTAL SHEETS | SHEET NUMBER |
|---------|-------------|-------------|--------------|--------------|
| VARIOUS | 2009-079 BP | COOK & LAKE | 26 | 1022 |

Contract 60116



FRAMING PLAN FOR ONE BRIDGE
(2 REQUIRED)

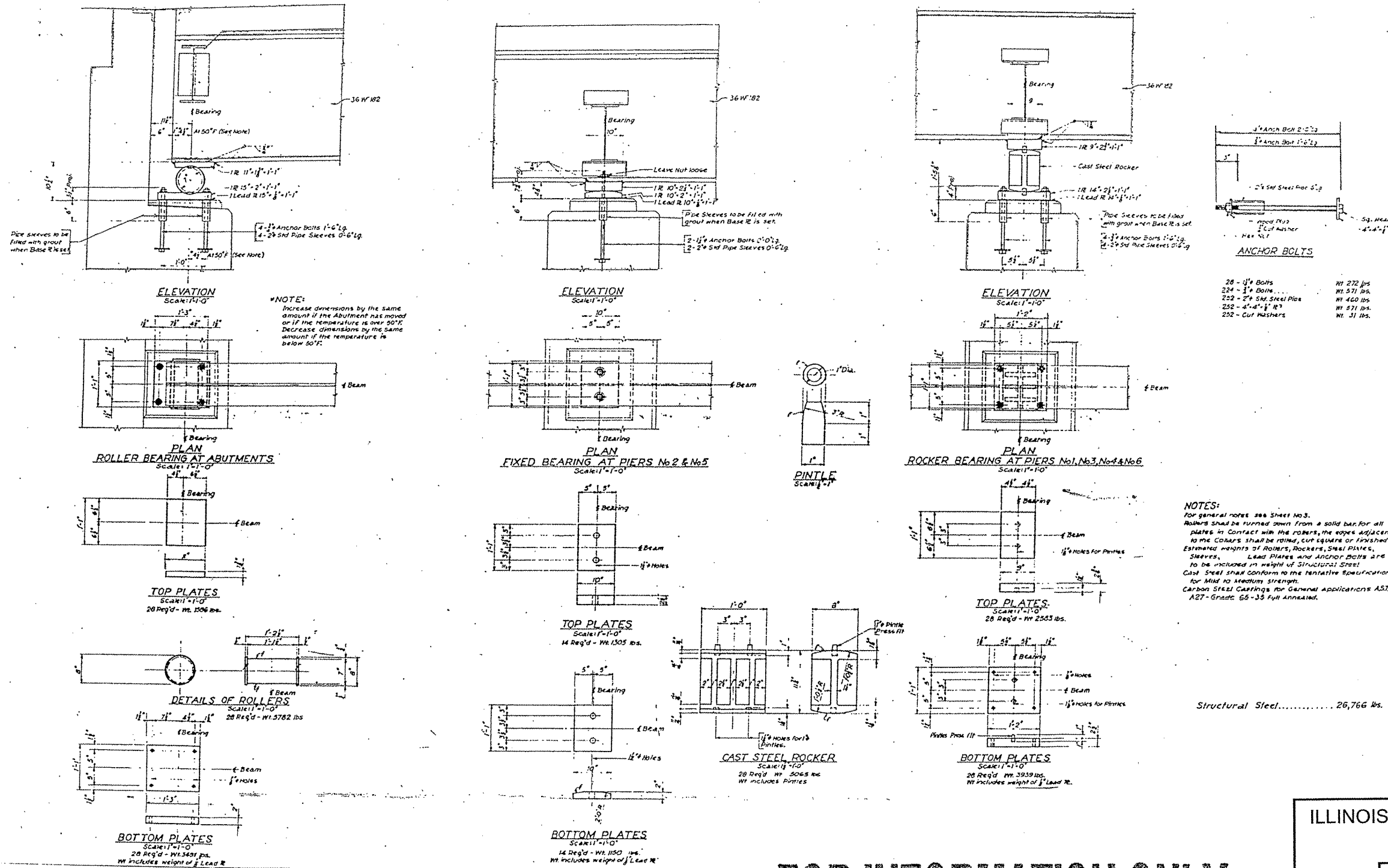
FOR INFORMATION ONLY



ILLINOIS DEPARTMENT OF TRANSPORTATION
EXISTING BRIDGE PLAN
SN 016-1041 AND 016-0456
(LOC. 3)

| ROUTE | SECTION | COUNTY | TOTAL SHEETS | SHEET NUMBER |
|---------|-------------|-------------|--------------|--------------|
| VARIOUS | 2009-079 BP | COOK & LAKE | 26 | 23 |

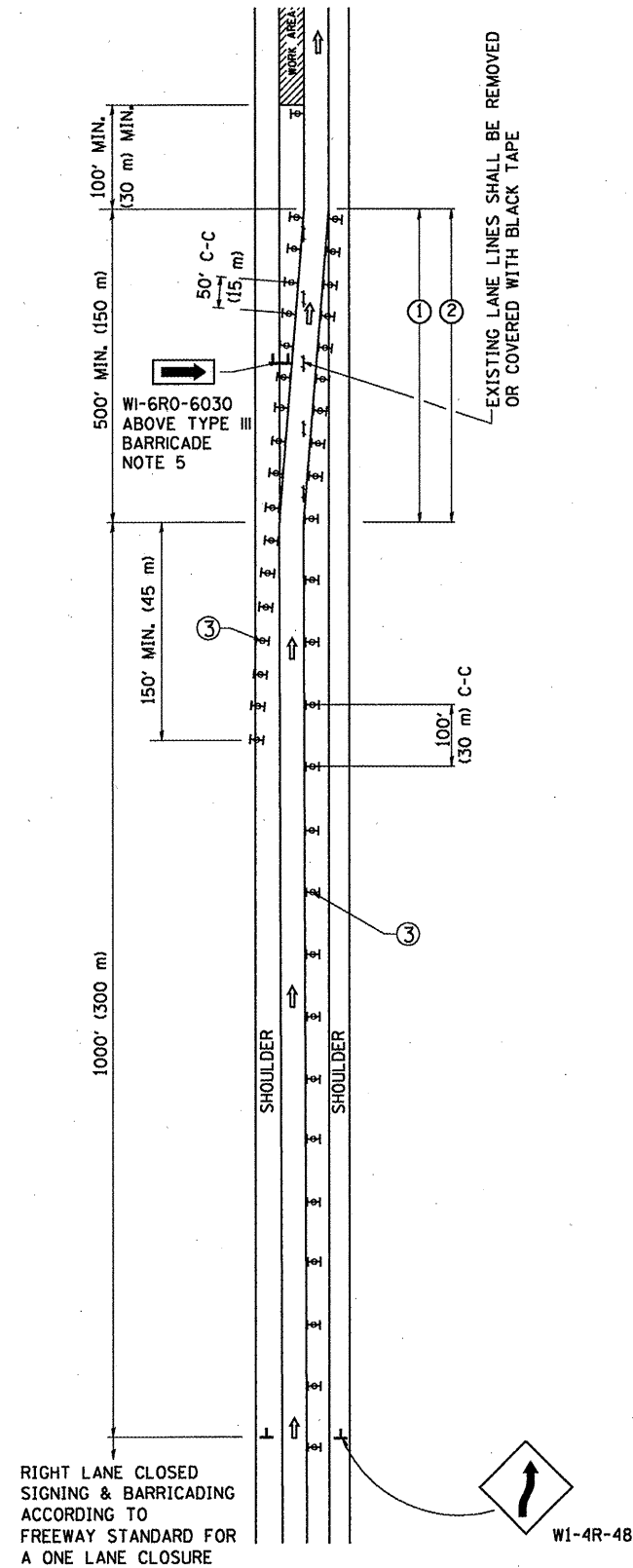
Contract 60116



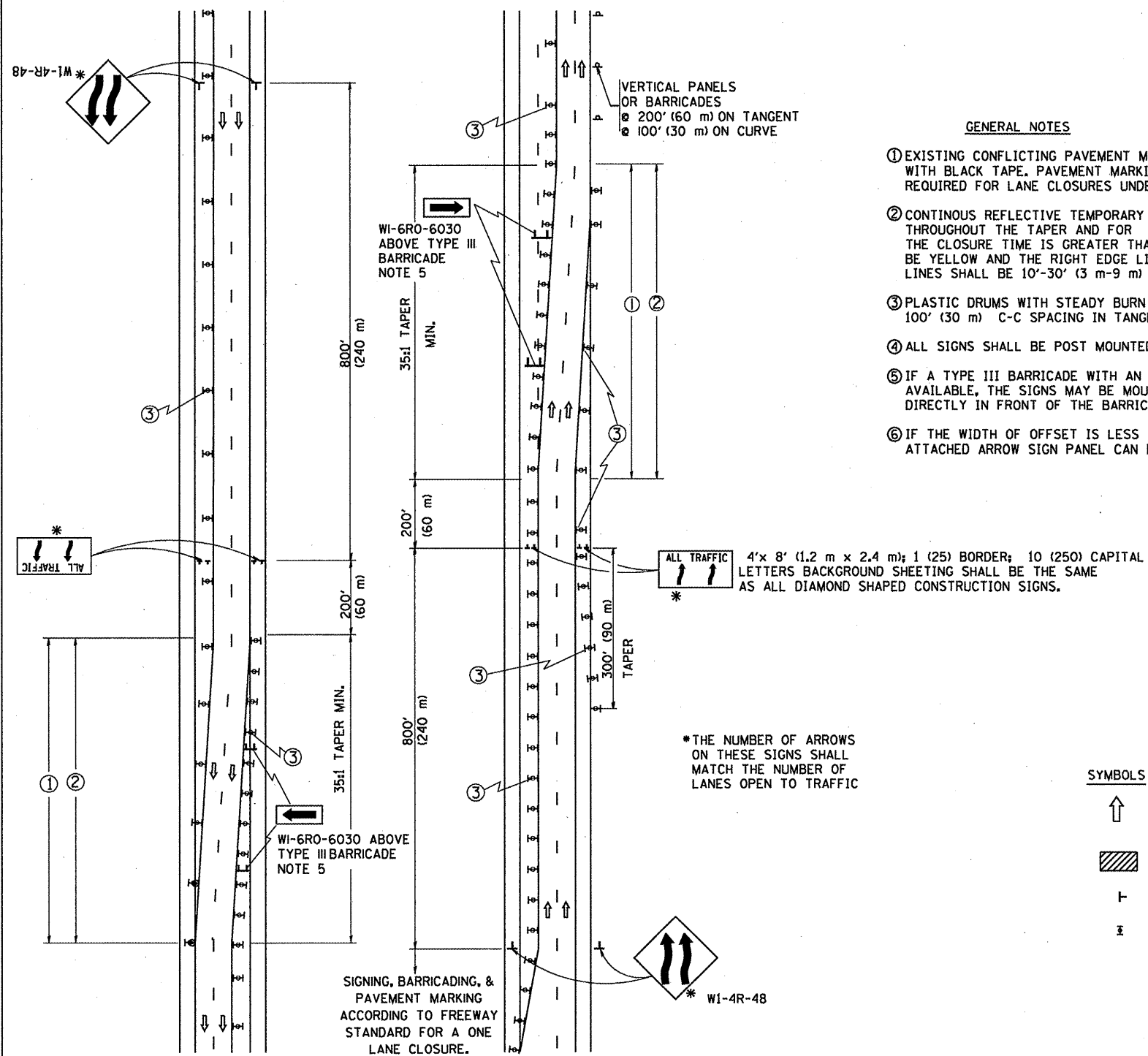
FOR INFORMATION ONLY

ILLINOIS DEPARTMENT OF TRANSPORTATION
 EXISTING BRIDGE PLAN
 SN 016-1041 AND 016-0456
 (LOC. 3)

SINGLE LANE WEAVE



MULTI-LANE WEAVE



GENERAL NOTES

- ① EXISTING CONFLICTING PAVEMENT MARKING LINES SHALL BE REMOVED OR COVERED WITH BLACK TAPE. PAVEMENT MARKING REMOVAL OR BLACK TAPE SHALL NOT BE REQUIRED FOR LANE CLOSURES UNDER 24 HOURS IN DURATION.
- ② CONTINUOUS REFLECTIVE TEMPORARY PAVEMENT MARKING TAPE SHALL BE PLACED THROUGHOUT THE TAPER AND FOR 300' (90 m) ALONG SIDE THE WORK AREA WHERE THE CLOSURE TIME IS GREATER THAN FOURTEEN DAYS. THE LEFT EDGE LINE SHALL BE YELLOW AND THE RIGHT EDGE LINE SHALL BE WHITE. FOR MULTI-LANE WEAVE LANE LINES SHALL BE 10'-30' (3 m-9 m) SKIP DASH, WHITE.
- ③ PLASTIC DRUMS WITH STEADY BURN LIGHTS AT 50' (15 m) C-C SPACING IN TAPERS AND 100' (30 m) C-C SPACING IN TANGENTS.
- ④ ALL SIGNS SHALL BE POST MOUNTED IF THE CLOSURE TIME EXCEEDS FOUR DAYS.
- ⑤ IF A TYPE III BARRICADE WITH AN ATTACHED SIGN PANEL WHICH MEETS NCHRP 350 IS NOT AVAILABLE, THE SIGNS MAY BE MOUNTED ON NCHRP 350 TEMPORARY SIGN SUPPORTS DIRECTLY IN FRONT OF THE BARRICADE.
- ⑥ IF THE WIDTH OF OFFSET IS LESS THAN 6' THEN THE TYPE III BARRICADE WITH ATTACHED ARROW SIGN PANEL CAN BE ELIMINATED IN THE TAPER AREAS.

SYMBOLS

- ↑ DIRECTION OF TRAFFIC
- ▨ WORK AREA
- ┌ SIGN ON PORTABLE OR PERMANENT SUPPORT
- ⊞ TYPE II BARRICADE, DRUM OR VERTICAL BARRICADE WITH MONO-DIRECTIONAL STEADY BURNING LIGHT

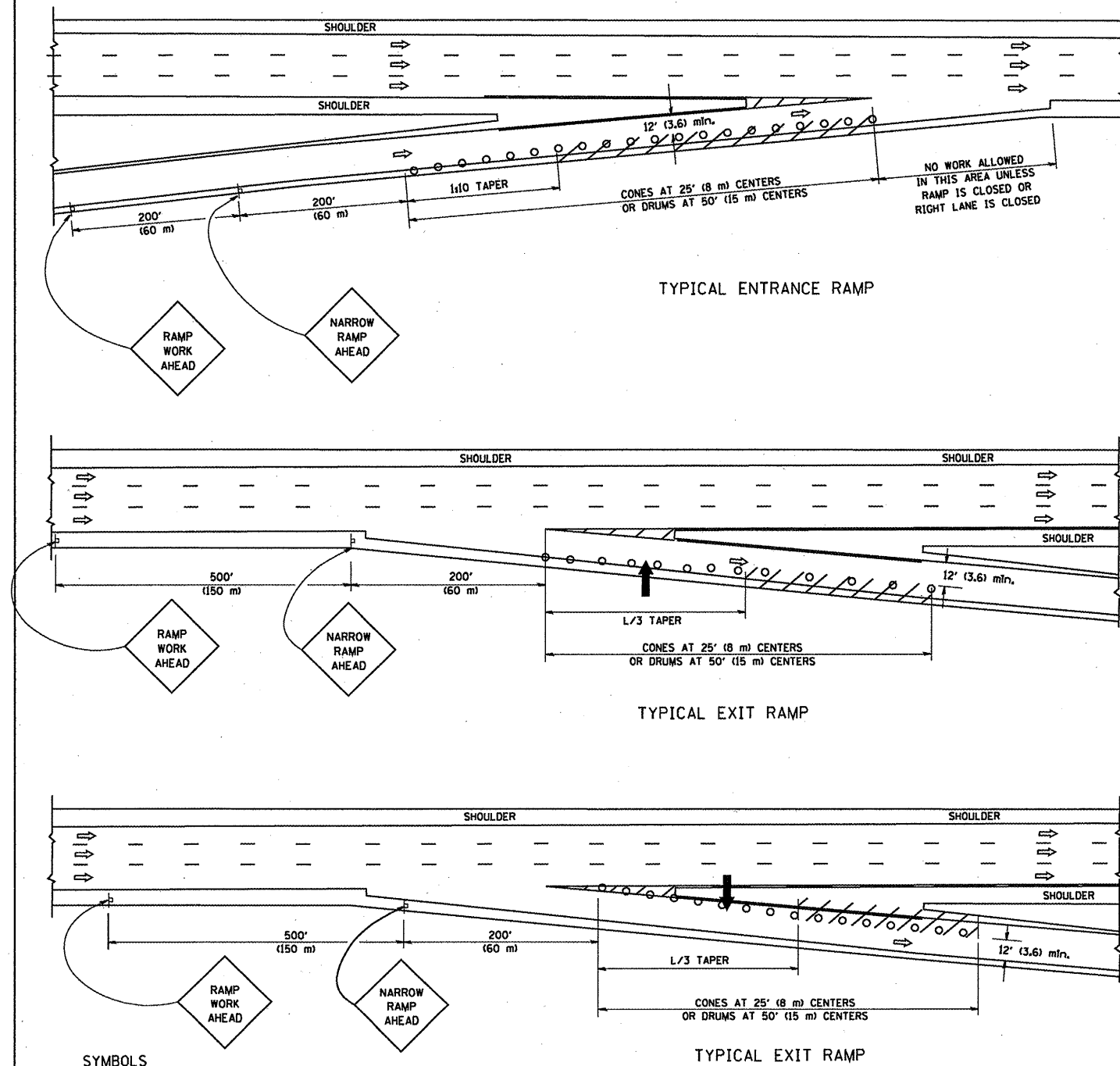
ALL DIMENSIONS ARE IN INCHES (MILLIMETERS) UNLESS OTHERWISE SHOWN

| | | | |
|--|----------------------|----------------|---------------------|
| FILE NAME = W:\dtd\std\22x34\td09.dgn | USER NAME = goglieno | DESIGNED - DWS | REVISED - DWS 11-96 |
| | | DRAWN - | REVISED - JAF 01-03 |
| | | CHECKED - | REVISED - JAF 02-06 |
| | | DATE - 02-87 | REVISED - SPB 01-07 |

STATE OF ILLINOIS
DEPARTMENT OF TRANSPORTATION

| | | | | | | |
|--|-------------------------|------------------|------------------------|-----------------------|--------------------|-----------------|
| TRAFFIC CONTROL DETAILS FOR FREEWAY SINGLE & MULTI-LANE WEAVE | | F.A. RTE. Var | SECTION 2009-079 BP | COUNTY Cook & Lake | TOTAL SHEETS 26 | SHEET NO. 24 |
| SCALE: NONE | SHEET NO. 1 OF 1 SHEETS | STA. | TO STA. | CONTRACT NO. 60216 | | |
| FED. ROAD DIST. NO. 1 (ILLINOIS) FED. AID PROJECT | | | | | | |

PARTIAL RAMP CLOSURE DETAILS



SYMBOLS

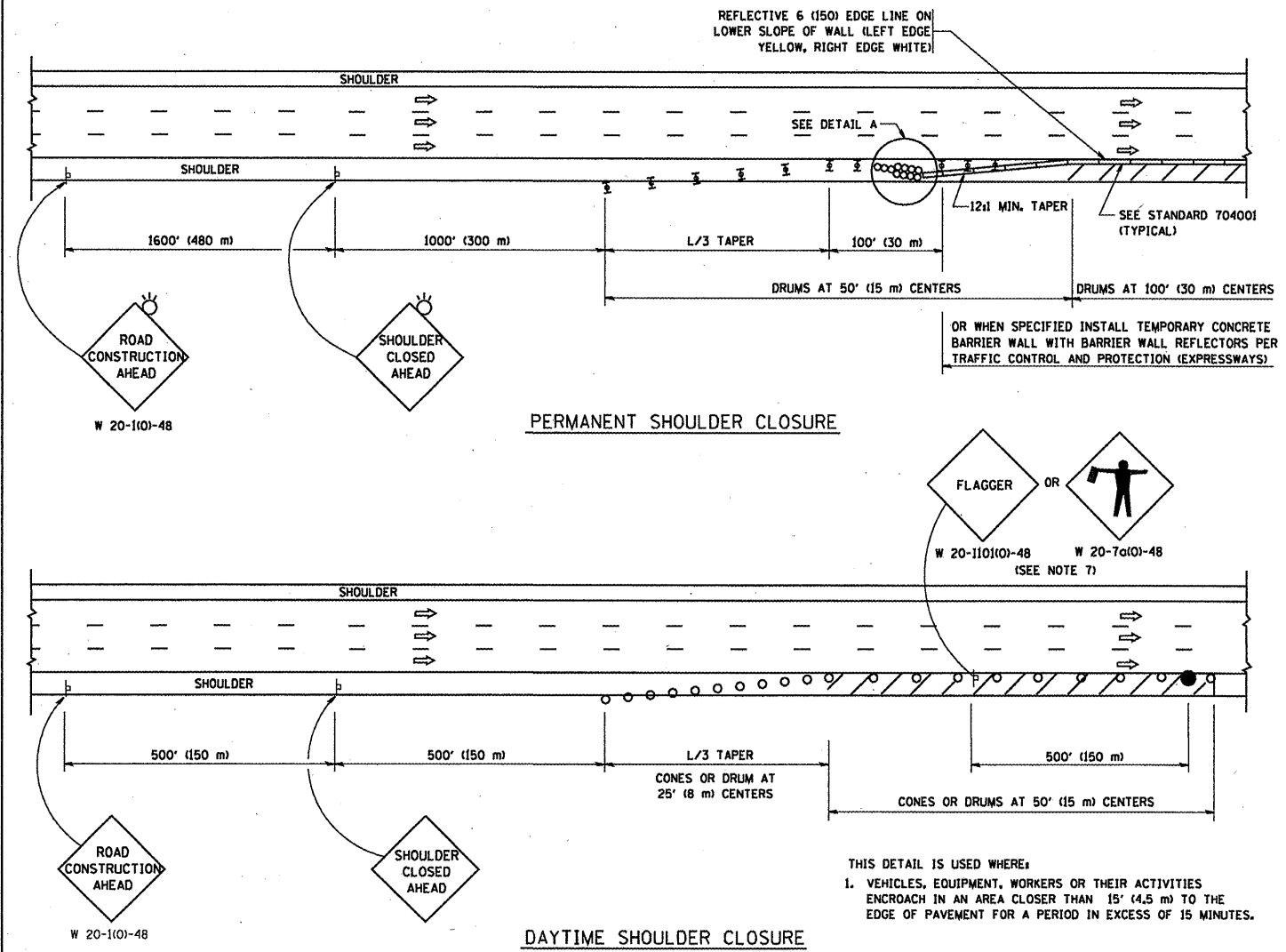
- ARROWBOARD
- WORK AREA
- SIGN ON PORTABLE OR PERMANENT SUPPORT
- FLAGGER WITH CONTROL SIGN
- TYPE II BARRICADE, DRUM OR VERTICAL BARRICADE WITH STEADY BURN MONO-DIRECTIONAL LIGHT
- CONE, DRUM OR BARRICADE

GENERAL NOTES

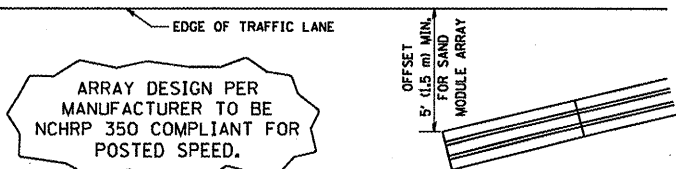
1. THE "L" DISTANCE EQUALS:

| | |
|--------------------------------------|---|
| SPEED LIMIT | FORMULAS |
| 45 mph (80 km/h) OR GREATER: | METRIC ENGLISH $L=0.65(W/S)$ $L=(W/S)$ |
| W = WIDTH OF OFFSET IN FEET (METERS) | |
| S = NORMAL POSTED SPEED MPH (KM/H) | |
2. PLASTIC DRUMS WITH HIGH PERFORMANCE REFLECTIVE SHEETING AND STEADY BURNING LIGHTS ARE REQUIRED FOR ALL NIGHTTIME CLOSURES.
3. ALL SIGNS SHALL BE POST MOUNTED IF THE CLOSURE TIME EXCEEDS FOUR DAYS.
4. FLASHING LIGHTS SHALL BE USED DURING THE HOURS OF DARKNESS AND SHALL BE INSTALLED ABOVE THE FIRST TWO SETS OF SIGNS.

SHOULDER CLOSURE DETAILS



THIS DETAIL IS USED WHERE:
 1. VEHICLES, EQUIPMENT, WORKERS OR THEIR ACTIVITIES ENCOACH IN AN AREA CLOSER THAN 15' (4.5 m) TO THE EDGE OF PAVEMENT FOR A PERIOD IN EXCESS OF 15 MINUTES.



DETAIL "A"
 IMPACT ATTENUATOR, TEMPORARY
 (SEE NOTE 5)

ALL DIMENSIONS ARE IN INCHES (MILLIMETERS) UNLESS OTHERWISE SHOWN.

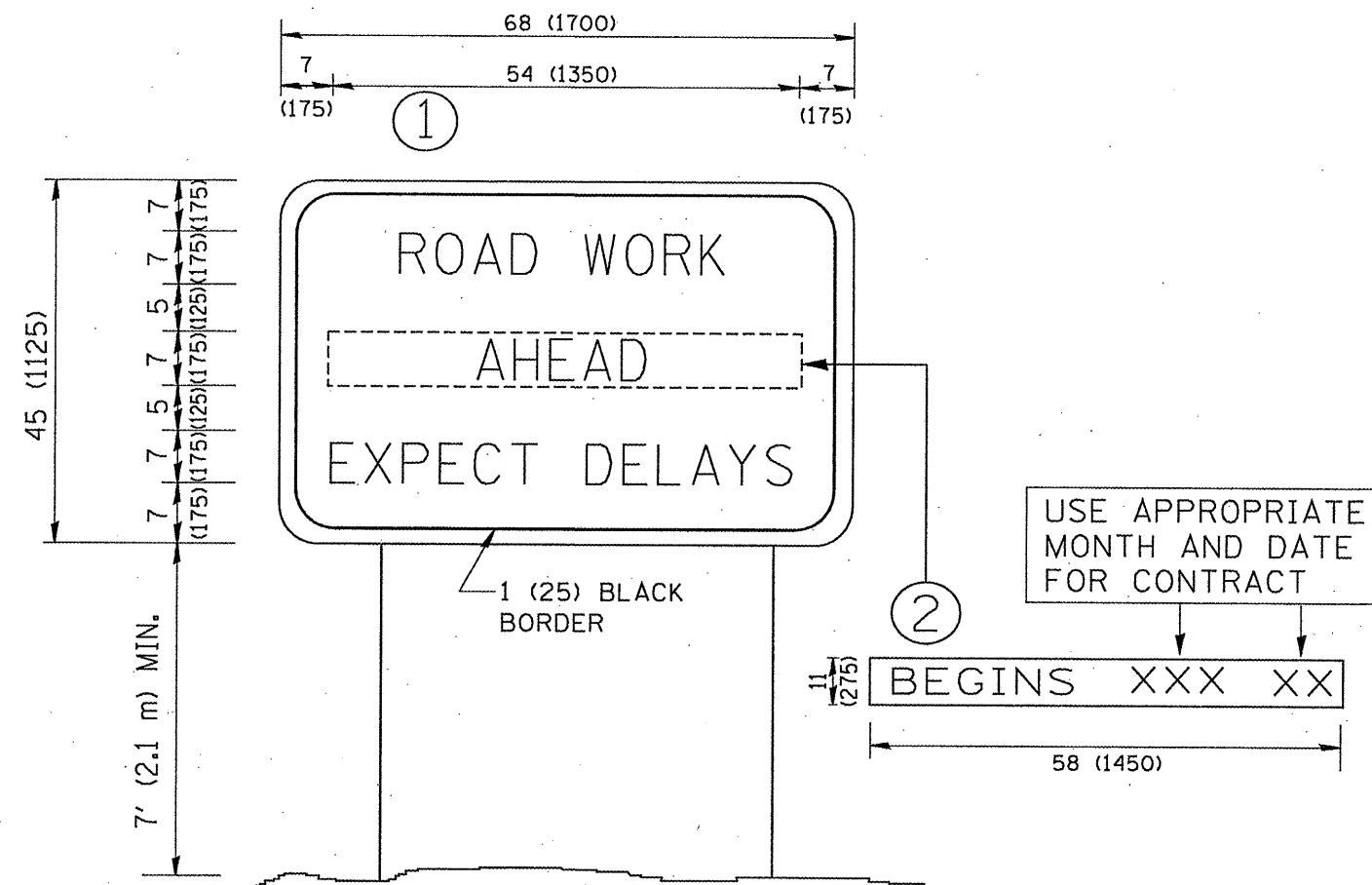
| | |
|-------------------------|-----------------------|
| FILE NAME = | USER NAME = geglennob |
| W:\diststd\22x34\17.dgn | |

| | |
|----------------|------------------------|
| DESIGNED - | REVISED - J.A.F. 12-02 |
| DRAWN - D.W.S. | REVISED - 04-03 |
| CHECKED - | REVISED - J.A.F. 12-06 |
| DATE - 11-96 | REVISED - S.P.B. 01-07 |

STATE OF ILLINOIS
DEPARTMENT OF TRANSPORTATION

| | | | |
|--|-------------------------|--------------|--|
| TRAFFIC CONTROL DETAILS FOR FREEWAY | | | |
| SHOULDER CLOSURES AND PARTIAL RAMP CLOSURES | | | |
| SCALE: NONE | SHEET NO. 1 OF 1 SHEETS | STA. TO STA. | |

| | | | | |
|---|-------------|-------------|--------------------|-----------|
| F.A. RTE. | SECTION | COUNTY | TOTAL SHEETS NO. | SHEET NO. |
| var | 200B-079 BP | Cook & Lake | 25 | 25 |
| TC-17 | | | CONTRACT NO. 60116 | |
| FED. ROAD DIST. NO. 1 ILLINOIS FED. AID PROJECT | | | | |



NOTES:

1. USE BLACK LETTERING ON ORANGE BACKGROUND.
2. ERECT SIGNS IN ADVANCE OF THE LOCATION FOR THE "ROAD CONSTRUCTION AHEAD" SIGN AT LOCATIONS AS DIRECTED BY THE ENGINEER.
3. ERECT SIGN ① WITH INSTALLED PANEL ② ONE WEEK PRIOR TO THE START OF CONSTRUCTION.
4. REMOVE PANEL ② SOON AFTER THE START OF CONSTRUCTION.
5. SEE SPECIAL PROVISION FOR "TEMPORARY INFORMATION SIGNING" FOR ADDITIONAL INFORMATION.
6. ONE SIGN ASSEMBLY EQUALS 25.70 SQ. FT. (2.3 SQ. M.)
7. SHALL BE PAID FOR AS TEMPORARY INFORMATION SIGNING.

ALL DIMENSIONS ARE IN INCHES (MILLIMETERS)
UNLESS OTHERWISE SHOWN.

| | | | |
|--|----------------------------|------------|---------------------------------|
| FILE NAME = W:\diststd\22x34\to22.dgn | USER NAME = geglianobt | DESIGNED - | REVISED - R. MIRS 09-15-97 |
| | | DRAWN - | REVISED - R. MIRS 12-11-97 |
| | PLOT SCALE = 50.000' / IN. | CHECKED - | REVISED - T. RAMMACHER 02-02-99 |
| | PLOT DATE = 1/4/2008 | DATE - | REVISED - C. JUCIUS 01-31-07 |

**STATE OF ILLINOIS
DEPARTMENT OF TRANSPORTATION**

**ARTERIAL ROAD
INFORMATION SIGN**

SCALE: NONE SHEET NO. 1 OF 1 SHEETS STA. TO STA.

| | | | | |
|---|-------------|--------|--------------------|--------------|
| F.A. RTE. | SECTION | COUNTY | TOTAL SHEETS | SHEET NO. |
| RDH | 2009-079 BP | Coates | 26 | 26 |
| TC-22 | | | CONTRACT NO. 60116 | |
| FED. ROAD DIST. NO. 1 ILLINOIS FED. AID PROJECT | | | | |