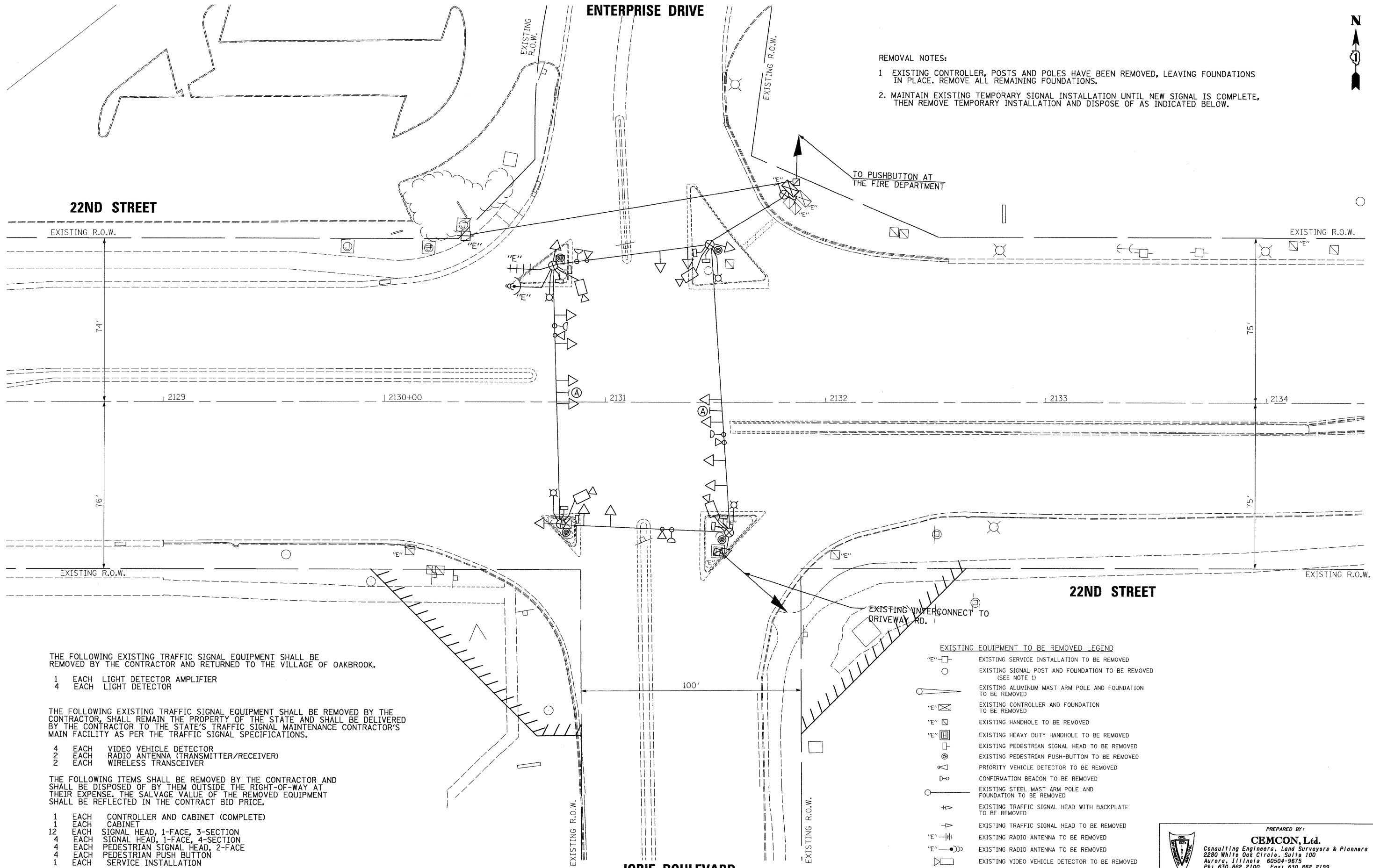




ENTERPRISE DRIVE

REMOVAL NOTES:

- 1 EXISTING CONTROLLER, POSTS AND POLES HAVE BEEN REMOVED, LEAVING FOUNDATIONS IN PLACE. REMOVE ALL REMAINING FOUNDATIONS.
2. MAINTAIN EXISTING TEMPORARY SIGNAL INSTALLATION UNTIL NEW SIGNAL IS COMPLETE, THEN REMOVE TEMPORARY INSTALLATION AND DISPOSE OF AS INDICATED BELOW.



THE FOLLOWING EXISTING TRAFFIC SIGNAL EQUIPMENT SHALL BE REMOVED BY THE CONTRACTOR AND RETURNED TO THE VILLAGE OF OAKBROOK.

- 1 EACH LIGHT DETECTOR AMPLIFIER
- 4 EACH LIGHT DETECTOR

THE FOLLOWING EXISTING TRAFFIC SIGNAL EQUIPMENT SHALL BE REMOVED BY THE CONTRACTOR, SHALL REMAIN THE PROPERTY OF THE STATE AND SHALL BE DELIVERED BY THE CONTRACTOR TO THE STATE'S TRAFFIC SIGNAL MAINTENANCE CONTRACTOR'S MAIN FACILITY AS PER THE TRAFFIC SIGNAL SPECIFICATIONS.

- 4 EACH VIDEO VEHICLE DETECTOR
- 2 EACH RADIO ANTENNA (TRANSMITTER/RECEIVER)
- 2 EACH WIRELESS TRANSCEIVER

THE FOLLOWING ITEMS SHALL BE REMOVED BY THE CONTRACTOR AND SHALL BE DISPOSED OF BY THEM OUTSIDE THE RIGHT-OF-WAY AT THEIR EXPENSE. THE SALVAGE VALUE OF THE REMOVED EQUIPMENT SHALL BE REFLECTED IN THE CONTRACT BID PRICE.

- 1 EACH CONTROLLER AND CABINET (COMPLETE)
- 1 EACH CABINET
- 12 EACH SIGNAL HEAD, 1-FACE, 3-SECTION
- 4 EACH SIGNAL HEAD, 1-FACE, 4-SECTION
- 4 EACH PEDESTRIAN SIGNAL HEAD, 2-FACE
- 4 EACH PEDESTRIAN PUSH BUTTON
- 1 EACH SERVICE INSTALLATION

EXISTING EQUIPMENT TO BE REMOVED LEGEND

- EXISTING SERVICE INSTALLATION TO BE REMOVED
- EXISTING SIGNAL POST AND FOUNDATION TO BE REMOVED (SEE NOTE 1)
- EXISTING ALUMINUM MAST ARM POLE AND FOUNDATION TO BE REMOVED
- EXISTING CONTROLLER AND FOUNDATION TO BE REMOVED
- EXISTING HANDHOLE TO BE REMOVED
- EXISTING HEAVY DUTY HANDHOLE TO BE REMOVED
- EXISTING PEDESTRIAN SIGNAL HEAD TO BE REMOVED
- EXISTING PEDESTRIAN PUSH-BUTTON TO BE REMOVED
- PRIORITY VEHICLE DETECTOR TO BE REMOVED
- CONFIRMATION BEACON TO BE REMOVED
- EXISTING STEEL MAST ARM POLE AND FOUNDATION TO BE REMOVED
- EXISTING TRAFFIC SIGNAL HEAD WITH BACKPLATE TO BE REMOVED
- EXISTING TRAFFIC SIGNAL HEAD TO BE REMOVED
- EXISTING RADIO ANTENNA TO BE REMOVED
- EXISTING RADIO ANTENNA TO BE REMOVED
- EXISTING VIDEO VEHICLE DETECTOR TO BE REMOVED

FILE NAME = J:\MICROST\ 22ND e ENT JORIE REM SIG	USER NAME = RDS	DESIGNED - KK	REVISED -
		DRAWN - RDS	REVISED -
	PLOT SCALE = 1"=20'	CHECKED - BPT	REVISED -
	PLOT DATE = 09-21-09	DATE - 09-21-09	REVISED -

STATE OF ILLINOIS
DEPARTMENT OF TRANSPORTATION

TRAFFIC SIGNAL REMOVAL PLAN			
22nd STREET AT ENTERPRISE DRIVE /JORIE BOULEVARD			
SCALE: N.T.S.	SHEET NO.	OF SHEETS	STA. TO STA.

PREPARED BY:
CEMCON, Ltd.
Consulting Engineers, Land Surveyors & Planners
2280 White Oak Circle, Suite 100
Aurora, Illinois 60504-9675
Ph: 630.862.2100 Fax: 630.862.2199
E-Mail: cadd@cemcon.com Website: www.cemcon.com

F.A.U. RTE. 1453	SECTION 2009-080 TS	COUNTY DuPAGE	TOTAL SHEETS 19	SHEET NO. 13
CONTRACT NO. 60117				
FED. ROAD DIST. NO. ILLINOIS FED. AID PROJECT				