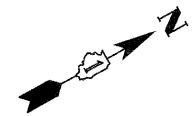
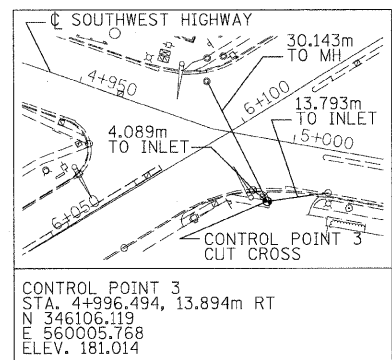
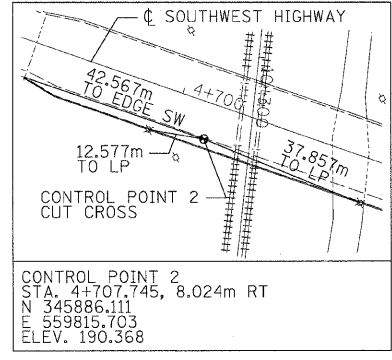
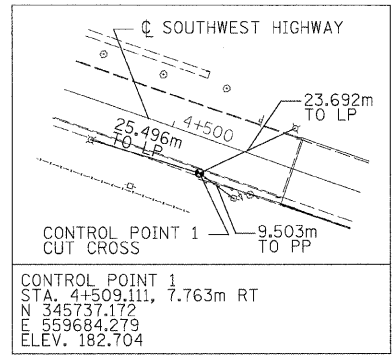


F.A.U. RTE.	SECTION	COUNTY	TOTAL SHEETS	SHEET NO.
3578	15VB-1-R-1	COOK	243	14
STA.		TO STA.		
FED. ROAD DIST. NO.		ILLINOIS FED. AID PROJECT		
CONTRACT NO. 62388				



BEGIN PROJECT
STA. 4+450.000



BENCH MARK:
E. FLANGE BOLT OF F.H. AT SOUTHWEST CORNER
OF RIDGELAND AVENUE AND SOUTHWEST
HIGHWAY - EL. 181.825
STA. 4+949.210 (SW HWY), 21.113m RT
N 346075.623
E 559965.871

PROP. CURVE P-SW
PI STA = 4+981.784
 $\Delta = 8^\circ 52' 45''$ (LT)
R = 1,400.000 m
T = 108.697 m
L = 216.959 m
E = 4.213 m
e = NORMAL CROWN
P.C. STA = 4+873.086
P.T. STA = 5+090.045

END IMPROVEMENT
STA. 6+156.359

END PROJECT
STA. 5+100.000

PROPOSED ϕ SOUTHWEST HIGHWAY

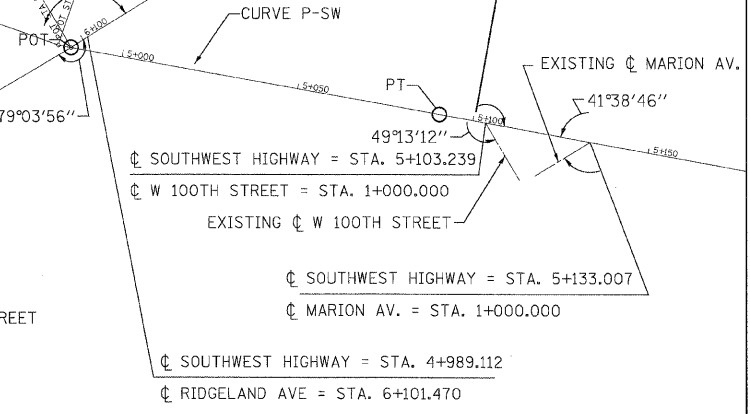
PROPOSED ϕ RIDGELAND AVENUE

BEGIN IMPROVEMENT
STA. 5+994.764

EXISTING ϕ B&O RAILROAD

EXISTING ϕ W 102ND PLACE

EXISTING ϕ W 103RD STREET



LOCATION	N	E
ϕ SOUTHWEST HIGHWAY = STA. 4+988.112	560011.665	346088.241
ϕ RIDGELAND AVE = STA. 6+101.470		
ϕ SOUTHWEST HIGHWAY = STA. 5+103.239	560097.189	346163.765
ϕ W 100TH ST = STA. 1+000.000		
ϕ RIDGELAND AVE = STA. 5+981.726	559891.870	346091.141
ϕ W 101ST ST = STA. 1+000.000		
ϕ SOUTHWEST HIGHWAY = STA. 5+133.007	560120.119	346182.748
ϕ MARION AVE = STA. 1+000.000		
ϕ SOUTHWEST HIGHWAY = STA. 5+676.060	559586.358	346100.742
ϕ W 102ND PLACE = STA. 1+000.000		
ϕ RIDGELAND AVE = STA. 5+575.235	559485.592	346104.193
ϕ W 103RD ST = STA. 1+000.000		

	ALIGNMENT POINT	N	E
CUR P-SW	PC 4+873.086	559931.272	346004.627
	PI 4+981.565	560003.297	346086.035
	PT 5+090.045	560087.026	346155.351
COORDINATE TABLE - RIDGELAND AVENUE			
	ALIGNMENT POINT	N	E
	POT 5+895.863	559806.033	346093.219
	POT 6+096.011	560006.122	346088.375

NAME	DATE

ILLINOIS DEPARTMENT OF TRANSPORTATION
FAU 3578 (SOUTHWEST HIGHWAY)
OVER B&O RAILROAD AND STONY CREEK
ALIGNMENT, TIES, & BENCHMARKS

SCALE: 1:1000
DATE: 6/17/09
DRAWN BY: DES
CHECKED BY: JJC

tkoeppen(Rdwy_L_1isle) 6/26/2009 1:33:00 AM Q:\DOT\9556_A0\Drawings\RDWY\shfts\All\S_Alf_01.dgn PDF(Grey_Large).plt

