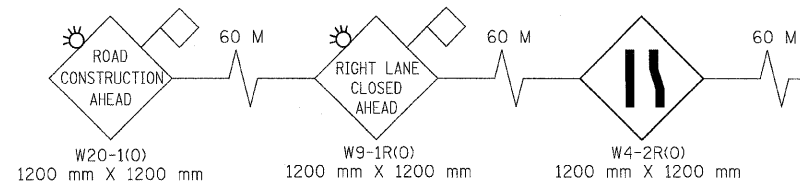


F.A.P. RTE.	SECTION	COUNTY	TOTAL SHEETS	SHEET NO.
3578	15VB-1-R-1	COOK	243	22
STA. BEGIN PROJECT TO STA. 4+850				
FED. ROAD DIST. NO.		ILLINOIS	FED. AID PROJECT	
CONTRACT NO. 62388				

**LEGEND**

- TYPE II BARRICADES OR DRUMS WITH STEADY BURN LIGHTS @ 15m CENTERS, 7.5m CENTERS ALONG TAPERS AND 3.5m CENTERS ALONG RADIUS RETURNS
- ➔ TRAFFIC DIRECTION
- ⏏ VERTICAL PANEL WITH STEADY BURNING LIGHT
- ⏏ TYPE III BARRICADES WITH FLASHING LIGHTS
- ▨ TEMPORARY HMA RAMP
- ▨ WORK ZONE
- ▨ TEMPORARY PAVEMENT
- ➔ ARROW BOARD
- ▨ TEMPORARY CONCRETE BARRIER
- ▨ IMPACT ATTENUATORS



EXIST. ☉ SOUTHWEST HIGHWAY

BEGIN PAVEMENT MARKING LIMIT STA. 4+261.500

WORK ZONE  
SPEED LIMIT  
35  
BEGINS  
#375 FINE MINIMUM

W2-1115(0)-3618  
R2-1-3648  
W2-1113(0)-3612  
R2-1106-3618

END WORK ZONE SPEED LIMIT  
G20-1103(0)-3660  
900 mm X 450 mm

WET REFL TEMP TAPE T3 TEMP PVT MK

WET REFL TAPE T3 100 DBL Y LINES 280 C-C (TYP)

IMP ATTN TEMP FRW TL2

WET REFL TAPE T3 100 W EDGE LINE (TYP)

15:1 TAPER

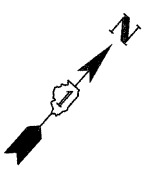
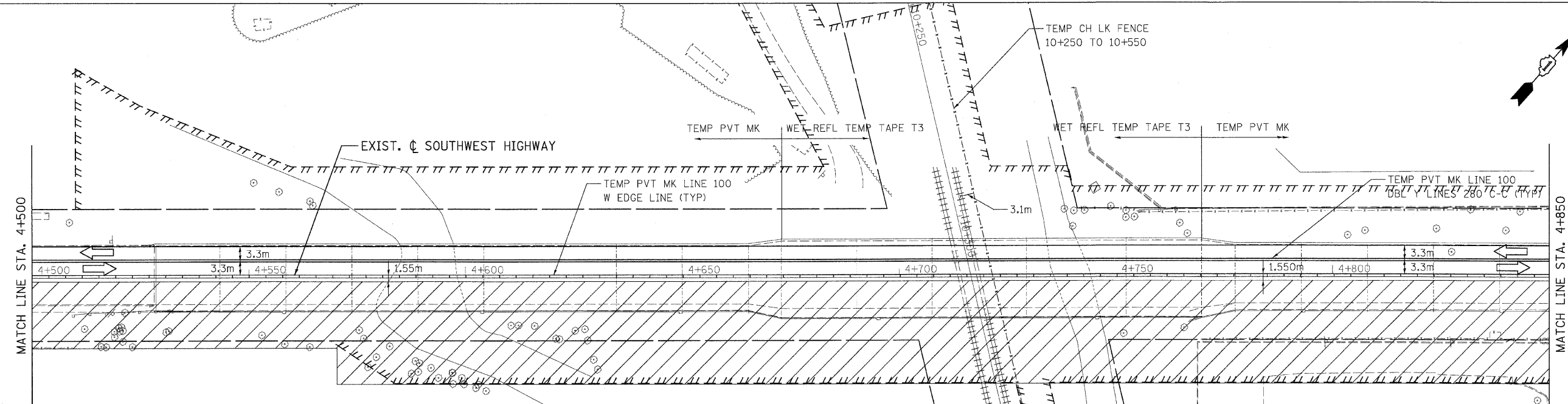
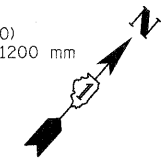
102ND PLACE

ROAD CONSTRUCTION AHEAD  
W20-1(0)  
1200 mm X 1200 mm  
➔ M6-1(0)  
530 mm X 380 mm

SIDEWALK CLOSED  
R11-1101-2418  
600 mm X 460 mm

BEGIN PROJECT STA. 4+450.00

W6-3(0)  
1200 mm X 1200 mm



REVISIONS	
NAME	DATE

ILLINOIS DEPARTMENT OF TRANSPORTATION  
FAU 3578 (SOUTHWEST HIGHWAY) OVER B&O RAILROAD AND STONY CREEK  
SUGGESTED STAGING OF CONSTRUCTION & TRAFFIC CONTROL  
SOUTHWEST HIGHWAY STAGE 1  
STA. 4+261 TO STA. 4+850  
SCALE: 1:500  
DATE: 6/17/09  
DRAWN BY: CPK  
CHECKED BY: DES

tkoepfen(frdwy\_Lisle) 6/26/2009 1:34:03 AM PDF(Grey\_Large).plt Q:\IDOT\9556-A0\Drawings\RDWY\shfts\MOT\S\_mot\_01\_01.dgn

