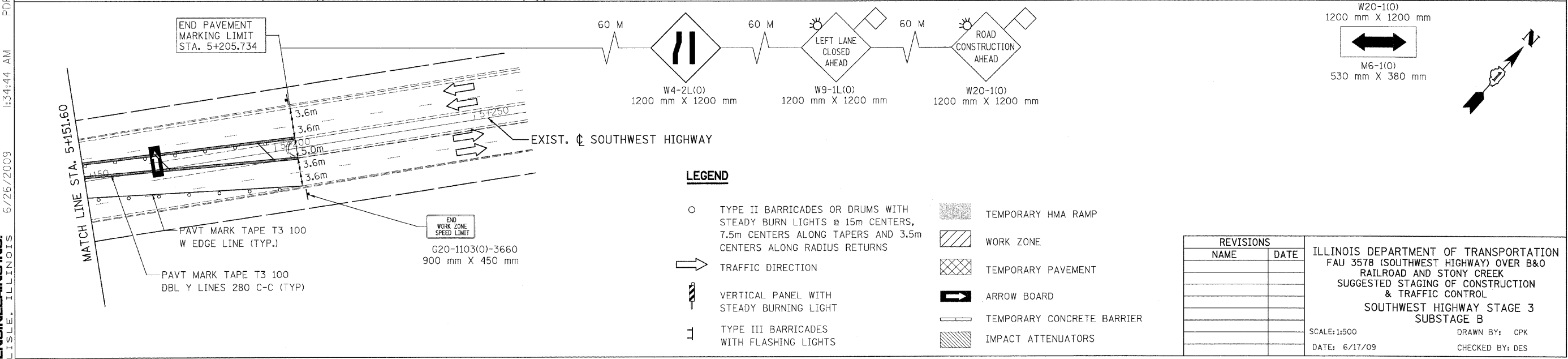
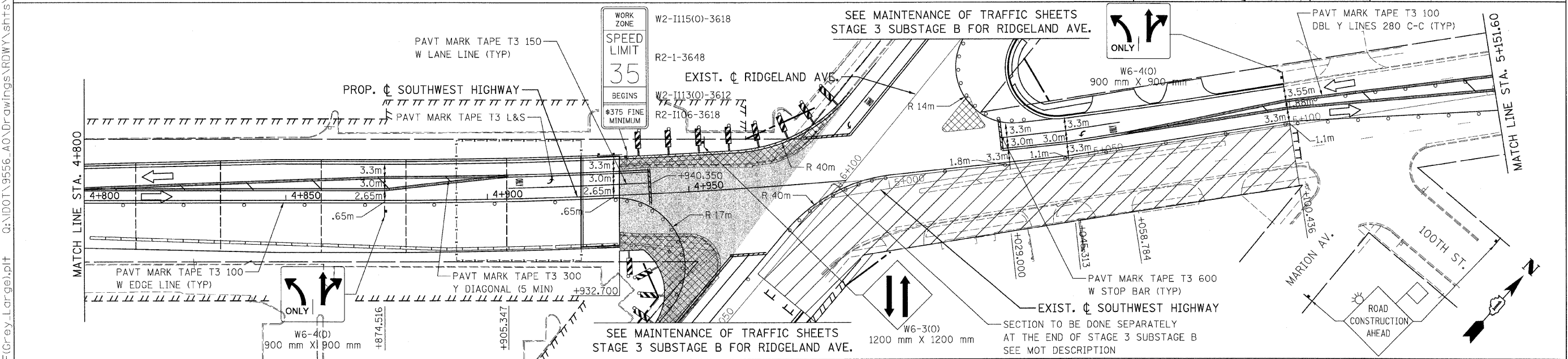
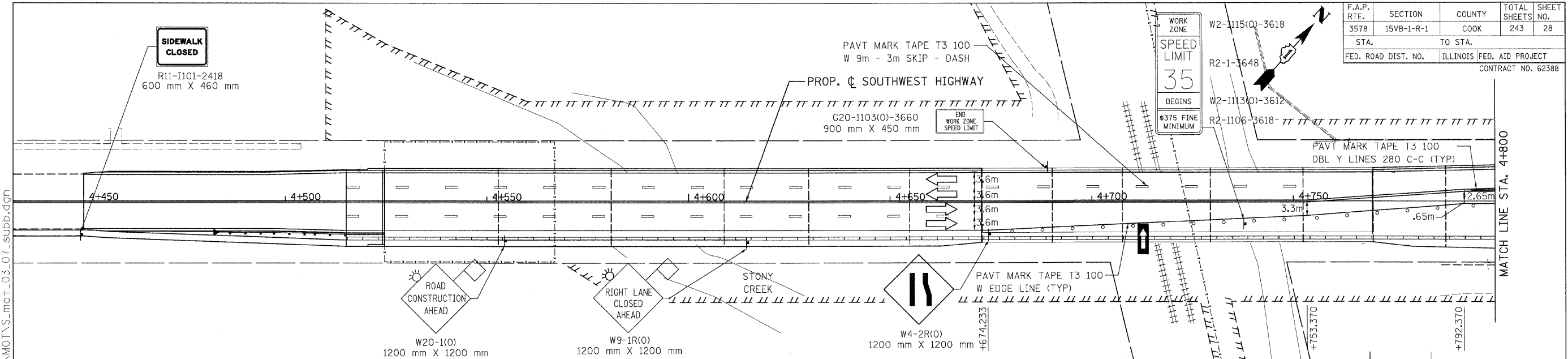


F.A.P. RTE.	SECTION	COUNTY	TOTAL SHEETS	SHEET NO.
3578	15VB-1-R-1	COOK	243	28
STA.		TO STA.		
FED. ROAD DIST. NO.		ILLINOIS FED. AID PROJECT		
CONTRACT NO. 62388				



- LEGEND**
- TYPE II BARRICADES OR DRUMS WITH STEADY BURN LIGHTS @ 15m CENTERS, 7.5m CENTERS ALONG TAPERS AND 3.5m CENTERS ALONG RADIUS RETURNS
 - ➔ TRAFFIC DIRECTION
 - ⚡ VERTICAL PANEL WITH STEADY BURNING LIGHT
 - ⊥ TYPE III BARRICADES WITH FLASHING LIGHTS
 - ▨ TEMPORARY HMA RAMP
 - ▨ WORK ZONE
 - ▨ TEMPORARY PAVEMENT
 - ➔ ARROW BOARD
 - ▨ TEMPORARY CONCRETE BARRIER
 - ▨ IMPACT ATTENUATORS

REVISIONS	
NAME	DATE

ILLINOIS DEPARTMENT OF TRANSPORTATION
FAU 3578 (SOUTHWEST HIGHWAY) OVER B&O RAILROAD AND STONY CREEK
SUGGESTED STAGING OF CONSTRUCTION & TRAFFIC CONTROL
SOUTHWEST HIGHWAY STAGE 3 SUBSTAGE B

SCALE: 1:500
DATE: 6/17/09

DRAWN BY: CPK
CHECKED BY: DES

PATRICK ENGINEERING INC.
LISLE, ILLINOIS

tkoepen(Rdwy_Lisle) 6/26/2009 1:34:44 AM PDF(Crey_Large).plf Q:\IDOT\9556-A0\Drawings\RDWY\shrs\MOT\S_mot_03_07_subb.dgn