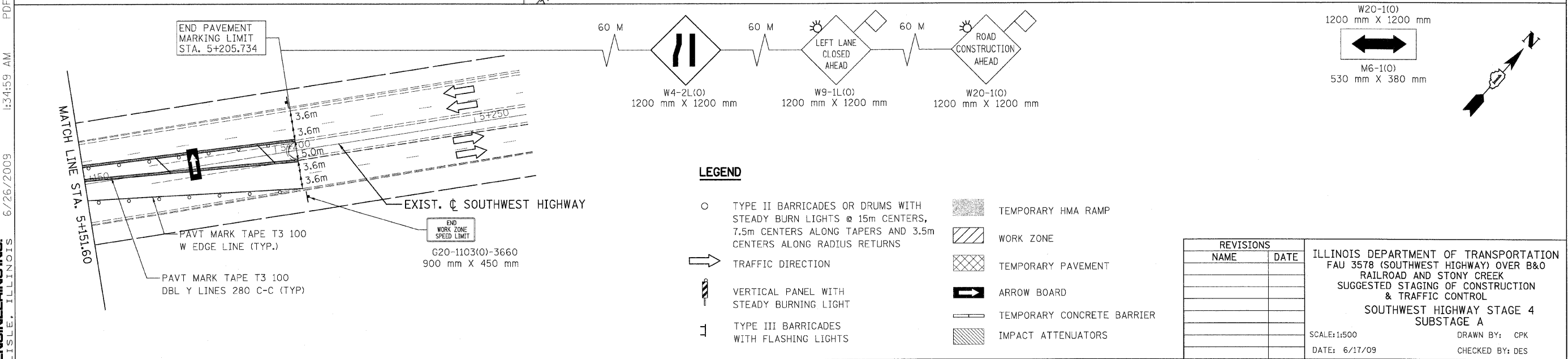
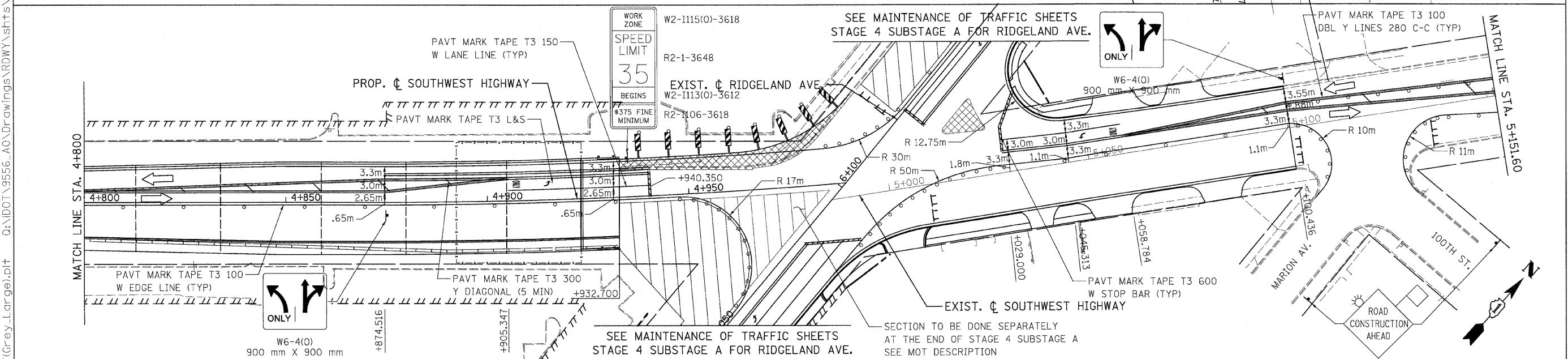
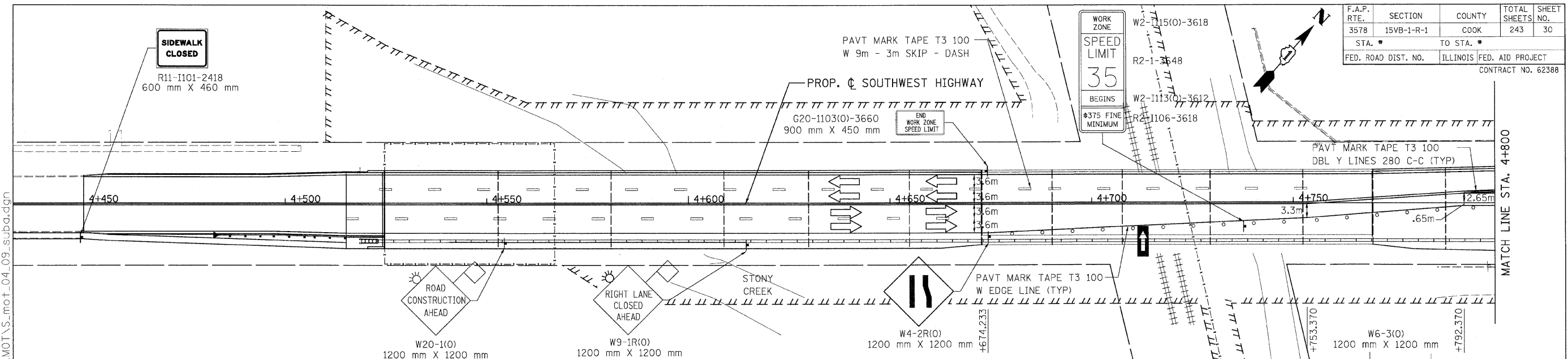


F.A.P. RTE.	SECTION	COUNTY	TOTAL SHEETS	SHEET NO.
3578	15VB-1-R-1	COOK	243	30
STA. * TO STA. *		ILLINOIS FED. AID PROJECT		
FED. ROAD DIST. NO.		CONTRACT NO. 62388		



LEGEND

- TYPE II BARRICADES OR DRUMS WITH STEADY BURN LIGHTS @ 15m CENTERS, 7.5m CENTERS ALONG TAPERS AND 3.5m CENTERS ALONG RADIUS RETURNS
- ➔ TRAFFIC DIRECTION
- ⊥ TYPE III BARRICADES WITH FLASHING LIGHTS
- ▨ TEMPORARY HMA RAMP
- ▨ WORK ZONE
- ▨ TEMPORARY PAVEMENT
- ➔ ARROW BOARD
- ▨ TEMPORARY CONCRETE BARRIER
- ▨ IMPACT ATTENUATORS

REVISIONS	
NAME	DATE

ILLINOIS DEPARTMENT OF TRANSPORTATION
 FAU 3578 (SOUTHWEST HIGHWAY) OVER B&O RAILROAD AND STONY CREEK
 SUGGESTED STAGING OF CONSTRUCTION & TRAFFIC CONTROL
SOUTHWEST HIGHWAY STAGE 4 SUBSTAGE A
 SCALE: 1:500
 DATE: 6/17/09
 DRAWN BY: CPK
 CHECKED BY: DES

tkoeppen(Rdwy-Lisle) 6/26/2009 1:34:59 AM
 Q:\DOT\9556-A0\Drawings\RDWY\shfts\MOT\S.mot_04_09_suba.dgn
 PDF(Grey_Large).plt

