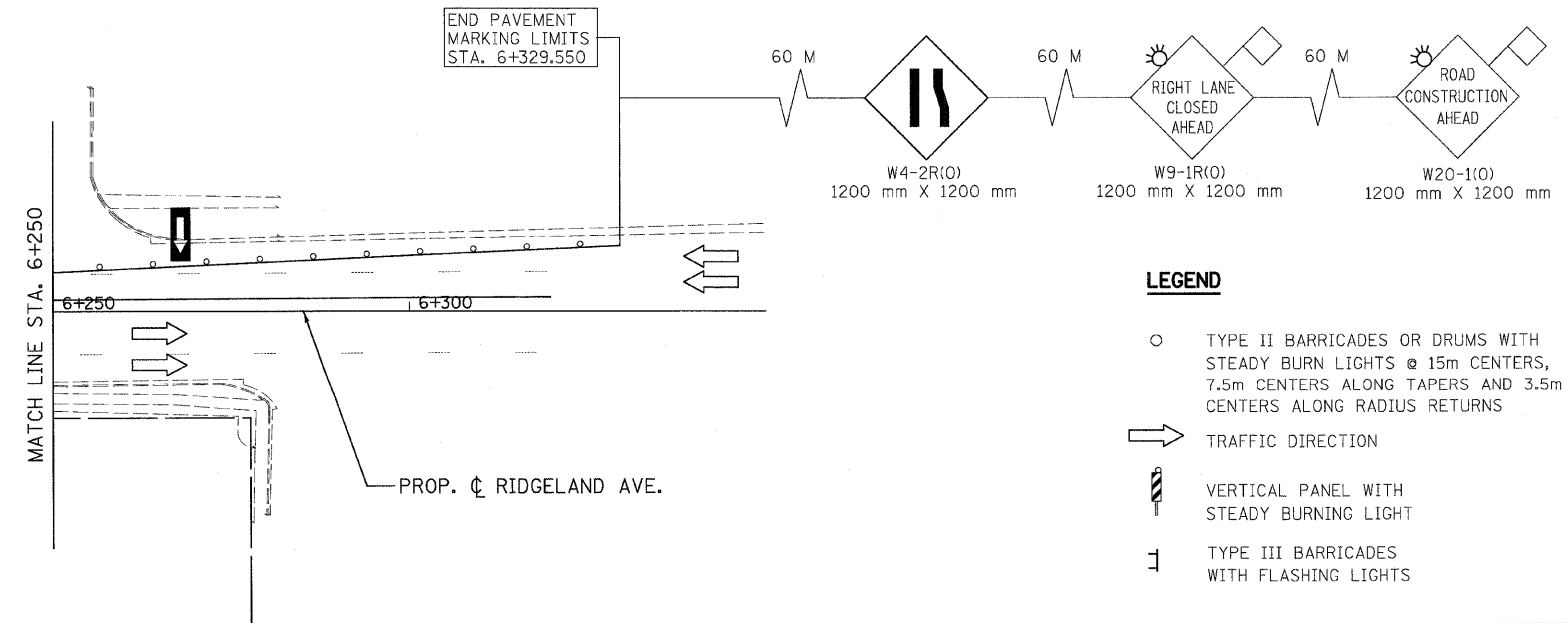
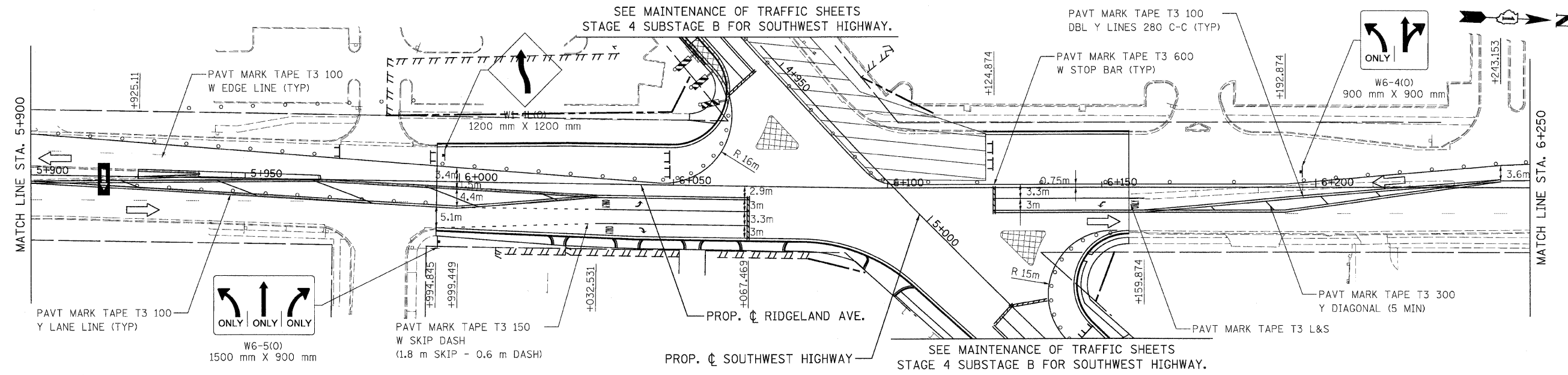
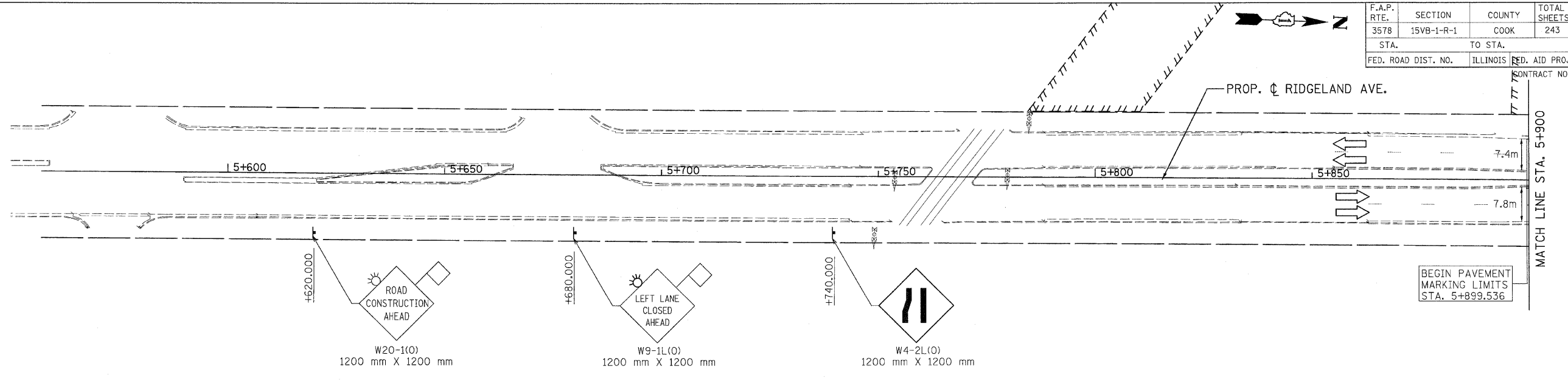


F.A.P. RTE.	SECTION	COUNTY	TOTAL SHEETS	SHEET NO.
3578	15VB-1-R-1	COOK	243	33
STA.		TO STA.		
FED. ROAD DIST. NO.		ILLINOIS	FED. AID PROJECT	
		CONTRACT NO. 62388		



LEGEND

- TYPE II BARRICADES OR DRUMS WITH STEADY BURN LIGHTS @ 15m CENTERS, 7.5m CENTERS ALONG TAPERS AND 3.5m CENTERS ALONG RADIUS RETURNS
- ➔ TRAFFIC DIRECTION
- ⚡ VERTICAL PANEL WITH STEADY BURNING LIGHT
- ⊥ TYPE III BARRICADES WITH FLASHING LIGHTS
- ▨ TEMPORARY HMA RAMP
- ▨ WORK ZONE
- ▨ TEMPORARY PAVEMENT
- ➔ ARROW BOARD
- ▬ TEMPORARY CONCRETE BARRIER
- ▨ IMPACT ATTENUATORS

REVISIONS	
NAME	DATE

ILLINOIS DEPARTMENT OF TRANSPORTATION
 FAU 3578 (SOUTHWEST HIGHWAY) OVER B&O
 RAILROAD AND STONY CREEK
 SUGGESTED STAGING OF CONSTRUCTION
 & TRAFFIC CONTROL
**RIDGELAND AVENUE STAGE 4
 SUBSTAGE B**
 SCALE: 1:500
 DATE: 6/17/09
 DRAWN BY: CPK
 CHECKED BY: DES

PATRICK ENGINEERING INC. LISLE, ILLINOIS
 tkoepen@rdwy-lisle.com 6/26/2009 1:35:20 AM
 Q:\DOT\9556-A0\Drawings\RDWY\shnts\MOT\S.mot_04_12_subb_r.dgind.dgn