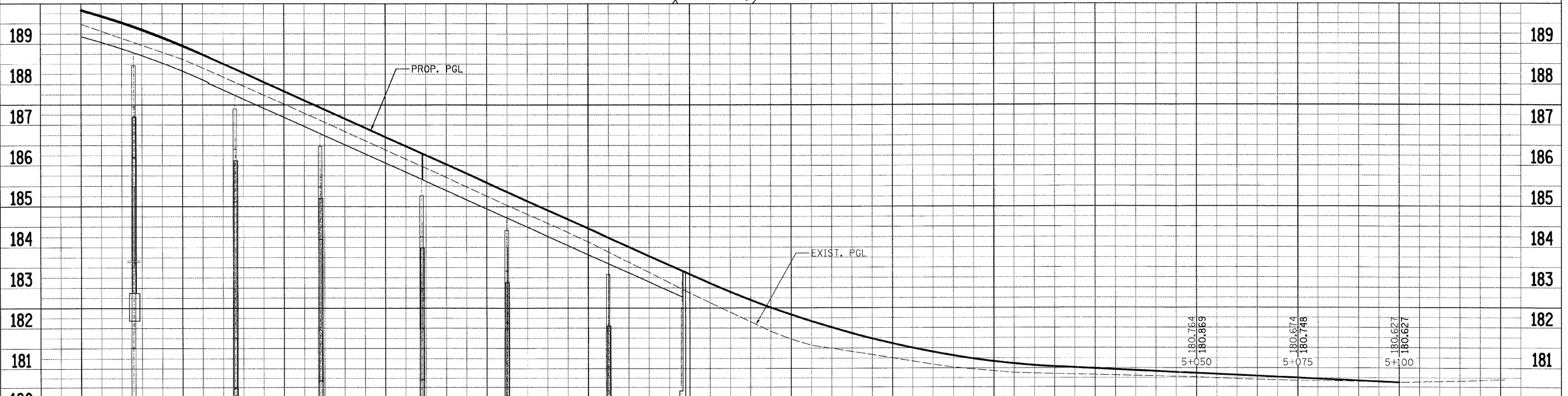
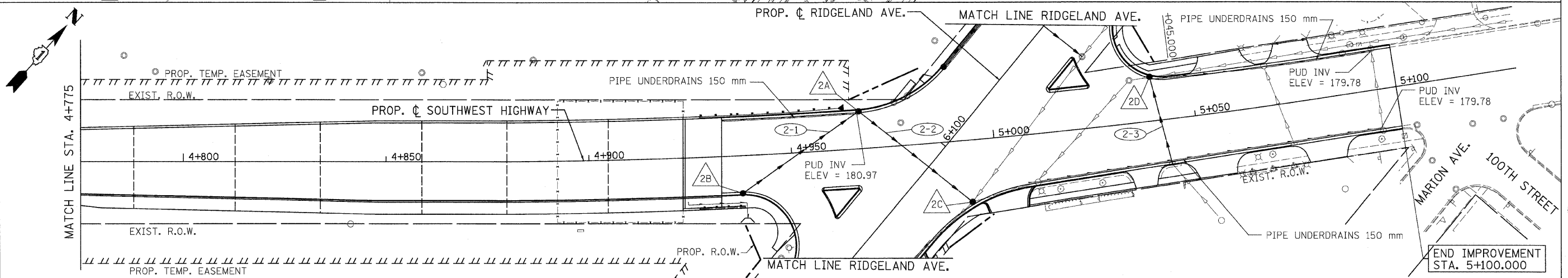
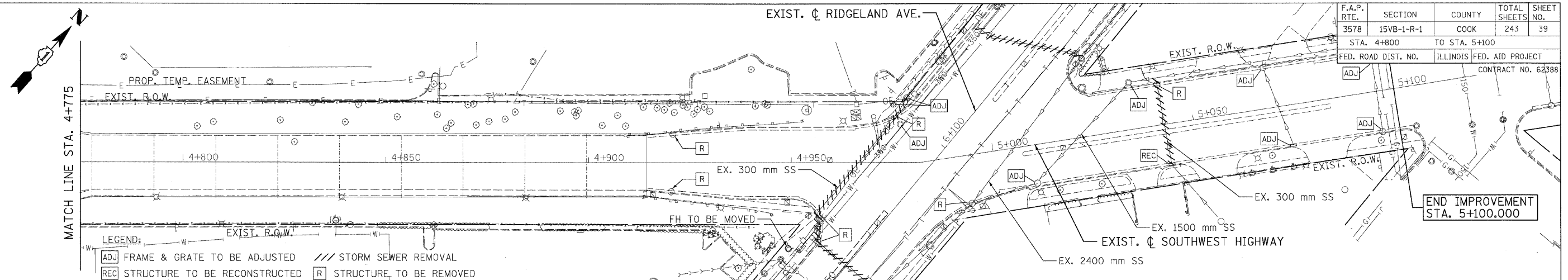


F.A.P. RTE.	SECTION	COUNTY	TOTAL SHEETS	SHEET NO.
3578	15VB-1-R-1	COOK	243	39
STA. 4+800		TO STA. 5+100		
FED. ROAD DIST. NO.		ILLINOIS FED. AID PROJECT		
		CONTRACT NO. 62388		



EXIST. PROP.	189.486 189.826	188.622 188.947	187.520 187.832	186.393 186.707	185.255 185.582	184.135 184.457	182.874 183.332	181.723 182.333	181.256 181.612	180.931 181.171	180.830 180.991
STATION	4+775	4+800	4+825	4+850	4+875	4+900	4+925	4+950	4+975	5+000	5+025

REVISIONS	
NAME	DATE

ILLINOIS DEPARTMENT OF TRANSPORTATION  
 FAU 3578 (SOUTHWEST HIGHWAY)  
 OVER B&O RAILROAD AND STONY CREEK  
 DRAINAGE & UTILITIES  
 STA. 4+800 TO STA. 5+100

SCALE: VERT. 1:50  
 HORIZ. 1:500  
 DATE: 6/17/09

DRAWN BY: DES  
 CHECKED BY: JJC

tkoepen(Rdwy\_Lisie) 6/26/2009 11:36:18 AM PDF(Grey\_Large).plt G:\DOT\9556\_A0\Drawings\RDWY\shfts\Draws\Draw\_02.dgn  
**PATRICK ENGINEERING INC.**  
 LISIE, ILLINOIS