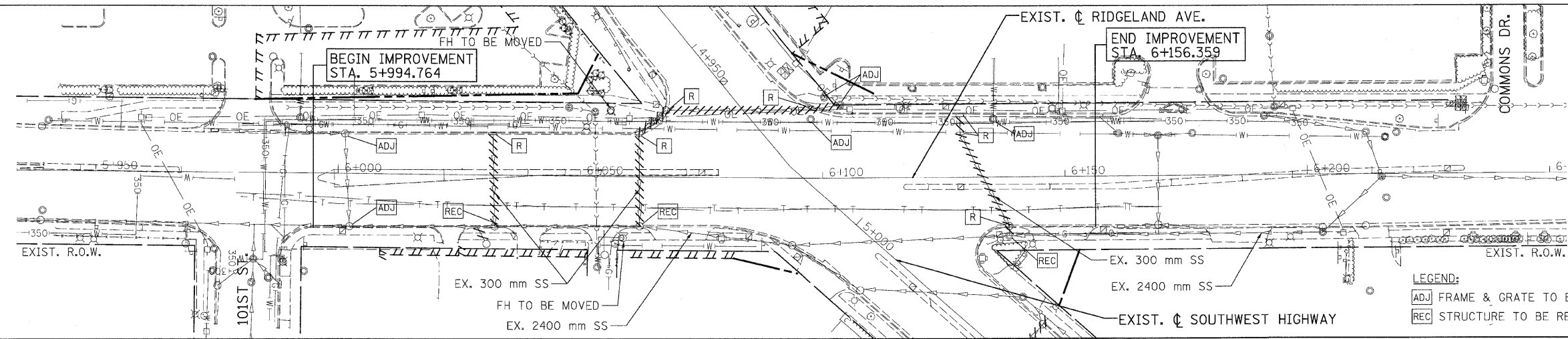
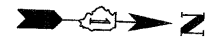
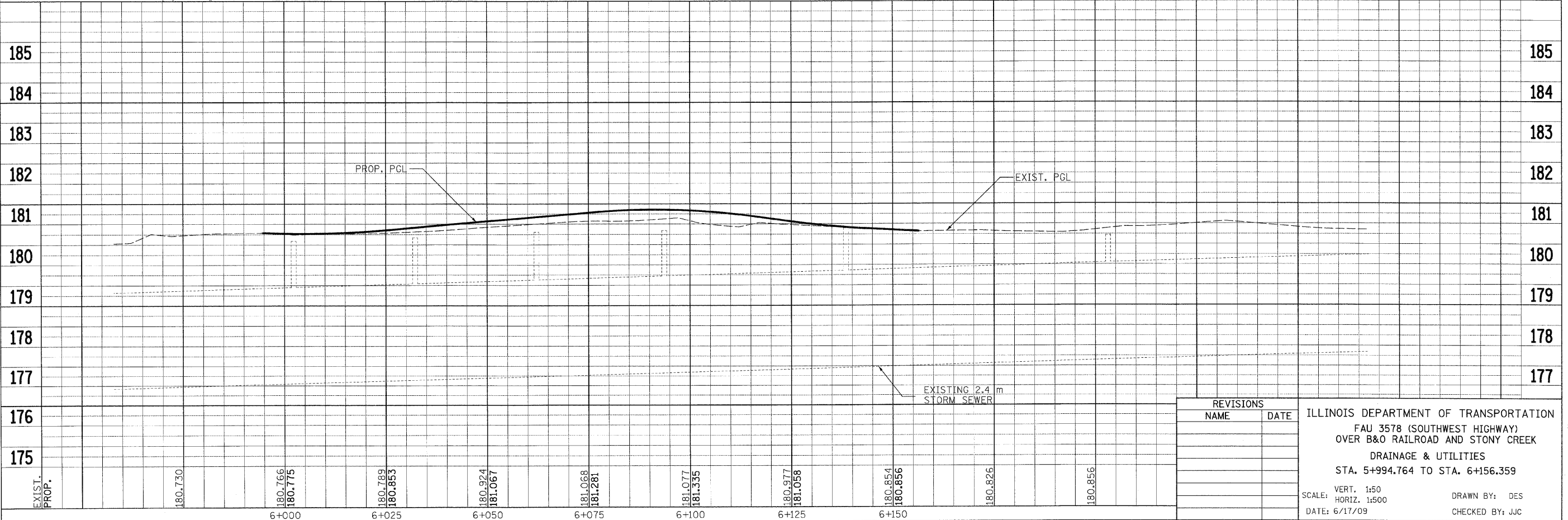
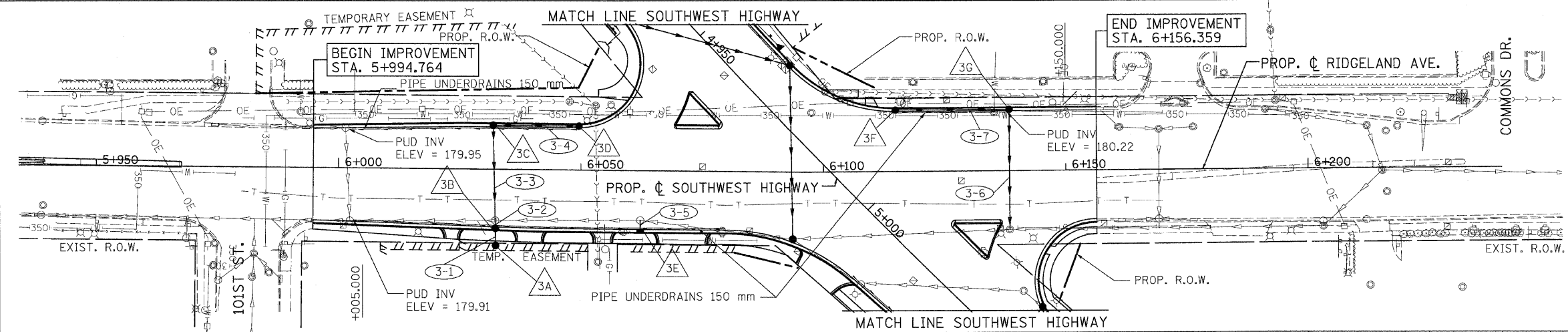


F.A.P. RTE.	SECTION	COUNTY	TOTAL SHEETS	SHEET NO.
3578	15VB-1-R-1	COOK	243	40
STA. 5+994.764		TO STA. 6+156.359		
FED. ROAD DIST. NO.		ILLINOIS FED. AID PROJECT		
CONTRACT NO. 62388				



LEGEND:
 [ADJ] FRAME & GRATE TO BE ADJUSTED [R] STRUCTURE TO BE REMOVED
 [REC] STRUCTURE TO BE RECONSTRUCTED [//] STORM SEWER REMOVAL



REVISIONS	
NAME	DATE

ILLINOIS DEPARTMENT OF TRANSPORTATION
 FAU 3578 (SOUTHWEST HIGHWAY)
 OVER B&O RAILROAD AND STONY CREEK
 DRAINAGE & UTILITIES
 STA. 5+994.764 TO STA. 6+156.359

SCALE: VERT. 1:50 DRAWN BY: DES
 HORIZ. 1:500 CHECKED BY: JJC
 DATE: 6/17/09

#koeppen(Rdwy_Lisle) 6/26/2009 1:36:25 AM Q:\DOT\9556_A0\Drawings\RDWY\snts\Draws_Dra_03_Rgind.dgn
PATRICK ENGINEERING INC.
 Lisle, Illinois