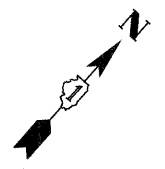


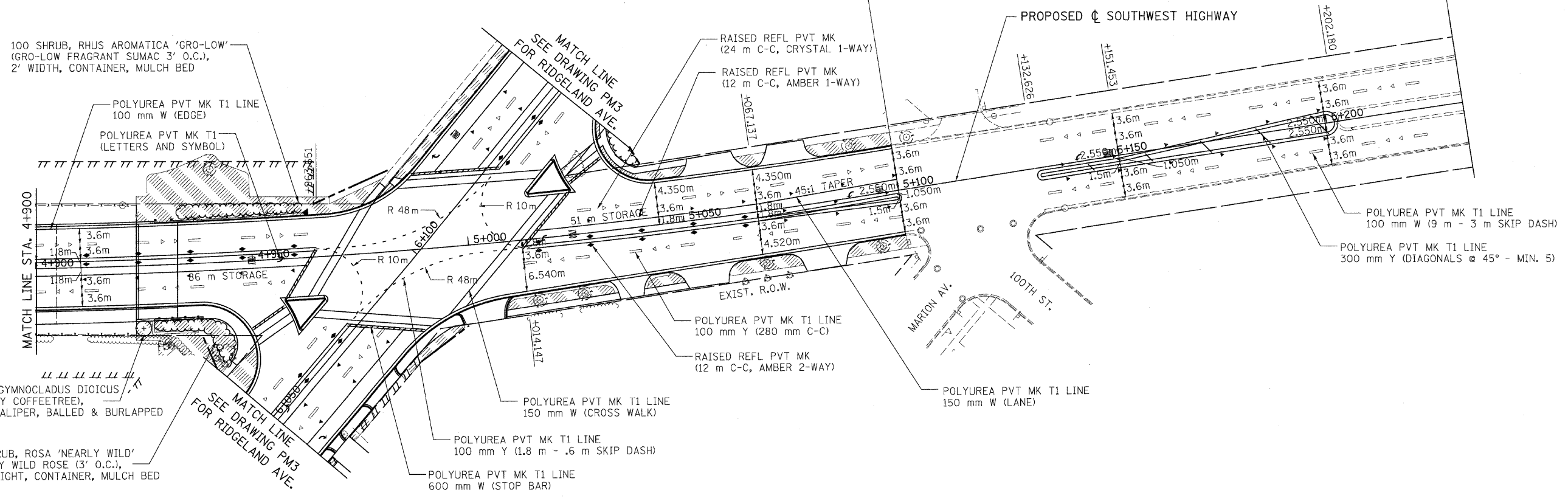
F.A.P. RTE.	SECTION	COUNTY	TOTAL SHEETS	SHEET NO.
3578	15VB-1-R-1	COOK	243	51
STA. 4+900		TO STA. 5+231.75		
FED. ROAD DIST. NO.		ILLINOIS FED. AID PROJECT		

CONTRACT NO. 62388



END PAVEMENT MARKING LIMIT
STA. 5+231.750

END PROJECT
STA. 5+100.000



100 SHRUB, RHUS AROMATICA 'GRO-LOW'
(GRO-LOW FRAGRANT SUMAC 3' O.C.),
2' WIDTH, CONTAINER, MULCH BED

POLYUREA PVT MK T1 LINE
100 mm W (EDGE)
POLYUREA PVT MK T1
(LETTERS AND SYMBOL)

1 TREE, GYMNOCLADUS DIOICUS
(KENTUCKY COFFEETREE),
2-1/2" CALIPER, BALLED & BURLAPPED

50 SHRUB, ROSA 'NEARLY WILD'
(NEARLY WILD ROSE (3' O.C.),
24" HEIGHT, CONTAINER, MULCH BED

- SEEDING CLASS 2
- SODDING, SALT TOLERANT

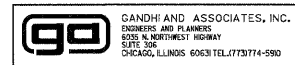
NOTES:

1. ALL PAVEMENT SHALL BE PROVIDED WITH POLYUREA PAVEMENT MARKINGS, TYPE 1.
2. THE CONTRACTOR SHALL CONTACT MS. PATRICE HARRIS AT 708-597-9800 TWO WEEKS PRIOR TO INSTALLING FINAL PAVEMENT MARKINGS.

REVISIONS	
NAME	DATE

ILLINOIS DEPARTMENT OF TRANSPORTATION
FAU 3578 (SOUTHWEST HIGHWAY)
OVER B&O RAILROAD AND STONY CREEK
PAVEMENT MARKING & LANDSCAPING PLAN
SHEET 2 OF 3

SCALE: 1:500
DATE: 6/17/09
DRAWN BY: BB/SA
CHECKED BY: PKG



PM2

tkoeppen(Rdwy_Lislie) 6/26/2009 1:36:59 AM PDF(Grey_Large).plt Q:\IDOT\9556-A0\Drawings\RDWY\shfts\Strp\S_Strp_Lndscp_02.dgn

