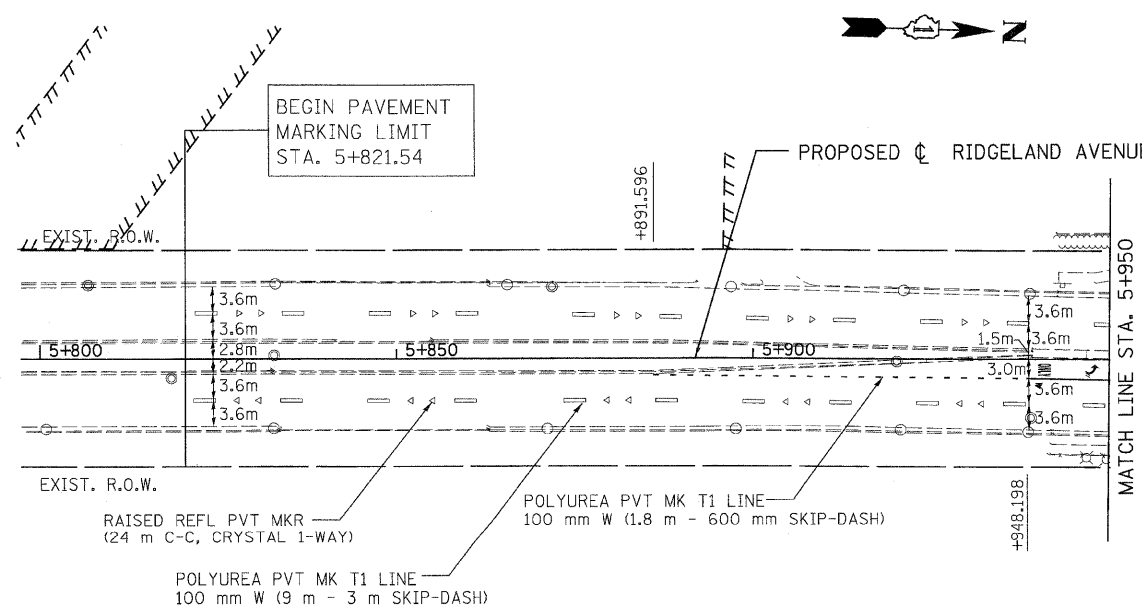
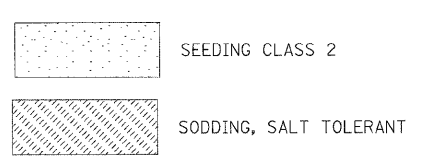
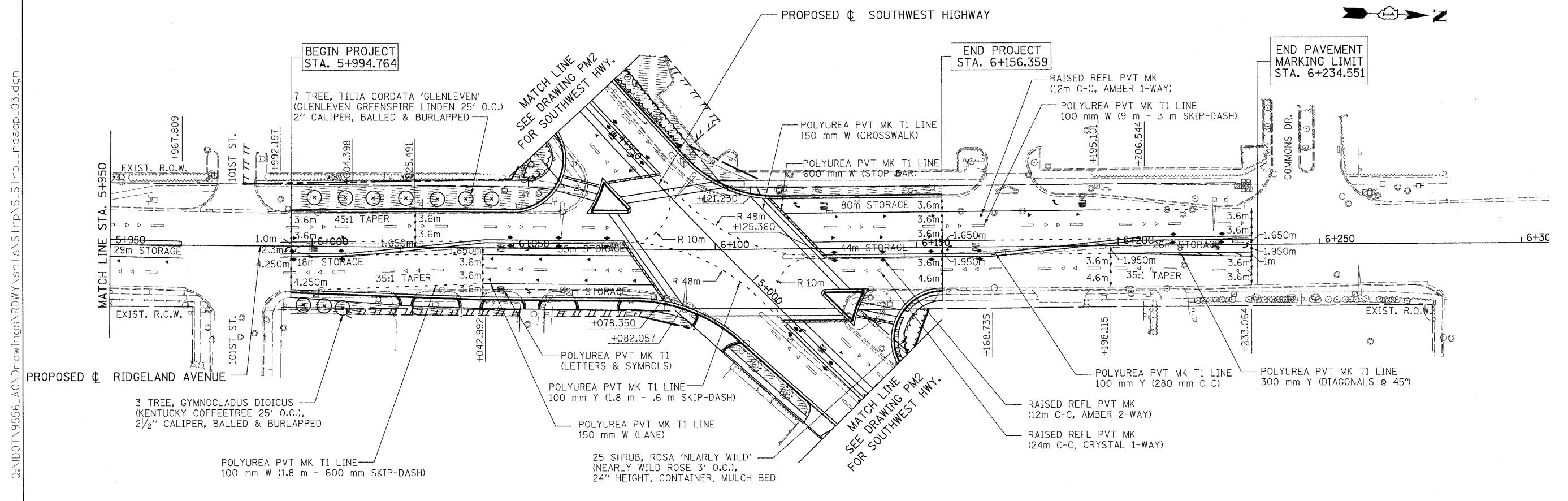
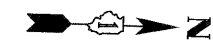


F.A.P. RTE.	SECTION	COUNTY	TOTAL SHEETS	SHEET NO.
3578	15VB-1-R-1	COOK	243	52
STA. 5+821.54		TO STA. 6+300.79		
FED. ROAD DIST. NO.		ILLINOIS FED. AID PROJECT		
CONTRACT NO. 62368				

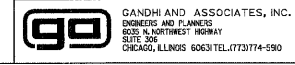


NOTES:
 ALL PAVEMENT SHALL BE PROVIDED WITH POLYUREA PAVEMENT MARKINGS, TYPE 1.
 THE CONTRACTOR SHALL CONTACT MS. PATRICE HARRIS AT 708-597-9800 TWO WEEKS PRIOR TO INSTALLING FINAL PAVEMENT MARKINGS.

REVISIONS	
NAME	DATE

ILLINOIS DEPARTMENT OF TRANSPORTATION
 FAU 3578 (SOUTHWEST HIGHWAY)
 OVER B&O RAILROAD AND STONY CREEK
 PAVEMENT MARKING & LANDSCAPING PLAN
 SHEET 3 OF 3

SCALE: 1:500
 DATE: 5-08-2009
 DRAWN BY: BB/SA
 CHECKED BY: PKG



tkoepen(Rdwy_Lislie) 6/26/2009 1:37:06 AM G:\IDOT\9556-A0\Drawings\RDWY\shnts\Strp\S_Strp_Lndscp_03.dgn PDF(Grey_Large).plt

