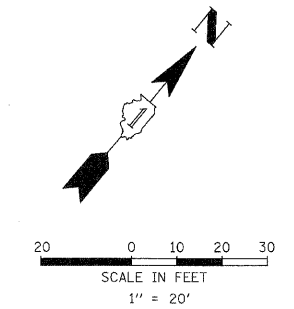


RESTORATION OF WORK AREA, RESTORATION OF THE TRAFFIC SIGNAL WORK AREA SHALL BE INCIDENTAL TO THE RELATED PAY ITEM SUCH AS FOUNDATION, CONDUIT, HANDHOLE, TRENCH AND BACKFILL, ETC., AND NO EXTRA COMPENSATION SHALL BE ALLOWED. ALL ROADWAY SURFACES SUCH AS SHOULDERS, MEDIAN, SIDEWALKS, PAVEMENT, ETC. SHALL BE REPLACED IN KIND. ALL DAMAGE TO MOWED LAWNS SHALL BE REPLACED WITH AN APPROVED SOD, AND ALL DAMAGE TO UNMOWED FIELDS SHALL BE SEEDED IN ACCORDANCE WITH STANDARD SPECIFICATIONS 252 AND 250 RESPECTIVELY.

CONVERSION TABLE

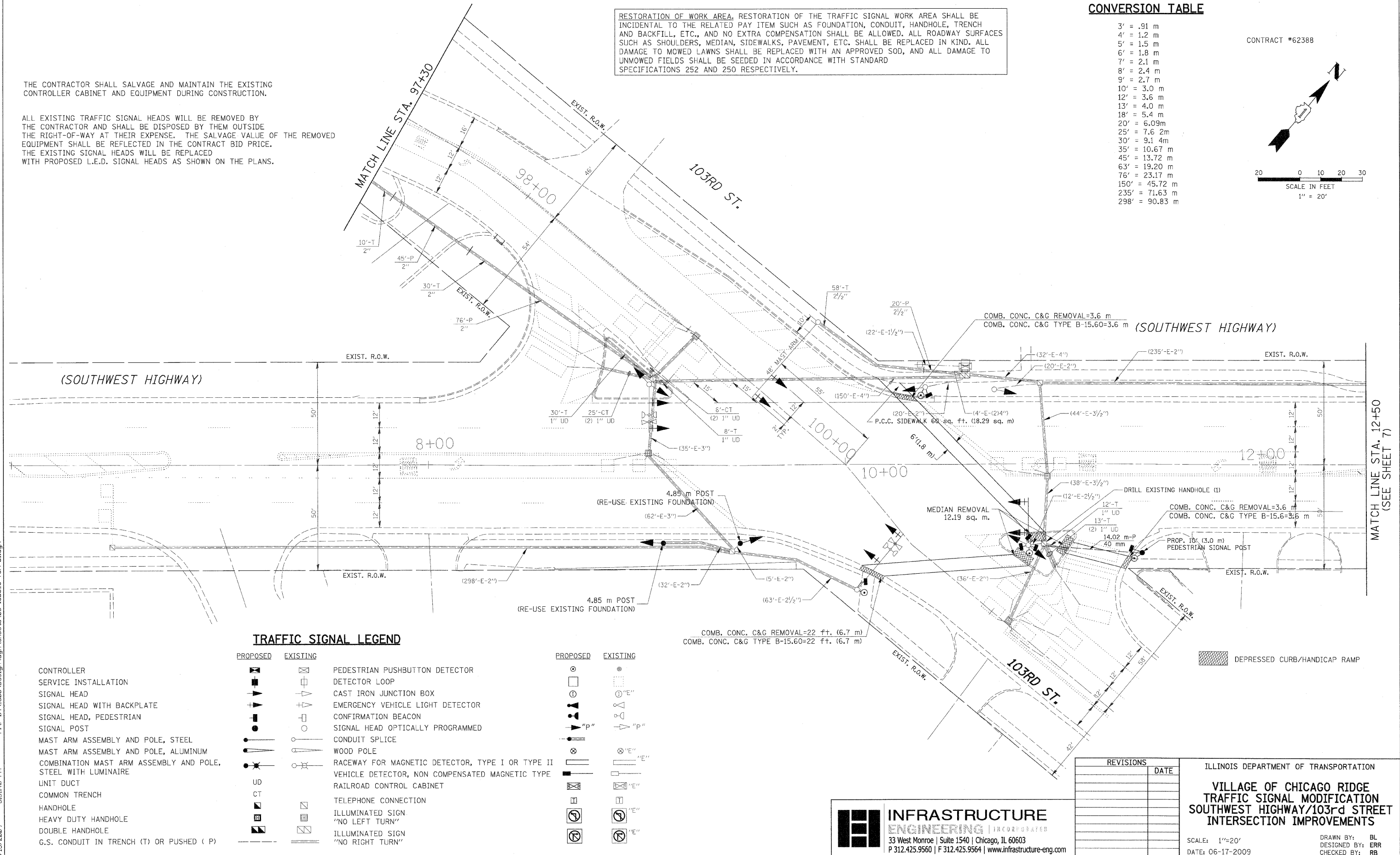
3'	= .91 m
4'	= 1.2 m
5'	= 1.5 m
6'	= 1.8 m
7'	= 2.1 m
8'	= 2.4 m
9'	= 2.7 m
10'	= 3.0 m
12'	= 3.6 m
13'	= 4.0 m
18'	= 5.4 m
20'	= 6.09 m
25'	= 7.62 m
30'	= 9.14 m
35'	= 10.67 m
45'	= 13.72 m
63'	= 19.20 m
76'	= 23.17 m
150'	= 45.72 m
235'	= 71.63 m
298'	= 90.83 m

CONTRACT #62388



THE CONTRACTOR SHALL SALVAGE AND MAINTAIN THE EXISTING CONTROLLER CABINET AND EQUIPMENT DURING CONSTRUCTION.

ALL EXISTING TRAFFIC SIGNAL HEADS WILL BE REMOVED BY THE CONTRACTOR AND SHALL BE DISPOSED BY THEM OUTSIDE THE RIGHT-OF-WAY AT THEIR EXPENSE. THE SALVAGE VALUE OF THE REMOVED EQUIPMENT SHALL BE REFLECTED IN THE CONTRACT BID PRICE. THE EXISTING SIGNAL HEADS WILL BE REPLACED WITH PROPOSED L.E.D. SIGNAL HEADS AS SHOWN ON THE PLANS.



TRAFFIC SIGNAL LEGEND

PROPOSED	EXISTING	DESCRIPTION
[Symbol]	[Symbol]	CONTROLLER SERVICE INSTALLATION
[Symbol]	[Symbol]	SIGNAL HEAD
[Symbol]	[Symbol]	SIGNAL HEAD WITH BACKPLATE
[Symbol]	[Symbol]	SIGNAL HEAD, PEDESTRIAN
[Symbol]	[Symbol]	SIGNAL POST
[Symbol]	[Symbol]	MAST ARM ASSEMBLY AND POLE, STEEL
[Symbol]	[Symbol]	MAST ARM ASSEMBLY AND POLE, ALUMINUM
[Symbol]	[Symbol]	COMBINATION MAST ARM ASSEMBLY AND POLE, STEEL WITH LUMINAIRE
[Symbol]	[Symbol]	UNIT DUCT
[Symbol]	[Symbol]	COMMON TRENCH
[Symbol]	[Symbol]	HANDHOLE
[Symbol]	[Symbol]	HEAVY DUTY HANDHOLE
[Symbol]	[Symbol]	DOUBLE HANDHOLE
[Symbol]	[Symbol]	G.S. CONDUIT IN TRENCH (T) OR PUSHED (P)
[Symbol]	[Symbol]	PEDESTRIAN PUSHBUTTON DETECTOR
[Symbol]	[Symbol]	DETECTOR LOOP
[Symbol]	[Symbol]	CAST IRON JUNCTION BOX
[Symbol]	[Symbol]	EMERGENCY VEHICLE LIGHT DETECTOR
[Symbol]	[Symbol]	CONFIRMATION BEACON
[Symbol]	[Symbol]	SIGNAL HEAD OPTICALLY PROGRAMMED
[Symbol]	[Symbol]	CONDUIT SPLICE
[Symbol]	[Symbol]	WOOD POLE
[Symbol]	[Symbol]	RACEWAY FOR MAGNETIC DETECTOR, TYPE I OR TYPE II
[Symbol]	[Symbol]	VEHICLE DETECTOR, NON COMPENSATED MAGNETIC TYPE
[Symbol]	[Symbol]	RAILROAD CONTROL CABINET
[Symbol]	[Symbol]	TELEPHONE CONNECTION
[Symbol]	[Symbol]	ILLUMINATED SIGN "NO LEFT TURN"
[Symbol]	[Symbol]	ILLUMINATED SIGN "NO RIGHT TURN"

REVISIONS	DATE

ILLINOIS DEPARTMENT OF TRANSPORTATION
VILLAGE OF CHICAGO RIDGE TRAFFIC SIGNAL MODIFICATION
SOUTHWEST HIGHWAY/103rd STREET INTERSECTION IMPROVEMENTS
 SCALE: 1"=20'
 DATE: 06-17-2009
 DRAWN BY: BL
 DESIGNED BY: ERR
 CHECKED BY: RB

INFRASTRUCTURE ENGINEERING INCORPORATED
 33 West Monroe | Suite 1540 | Chicago, IL 60603
 P 312.425.9560 | F 312.425.9564 | www.infrastructure-eng.com