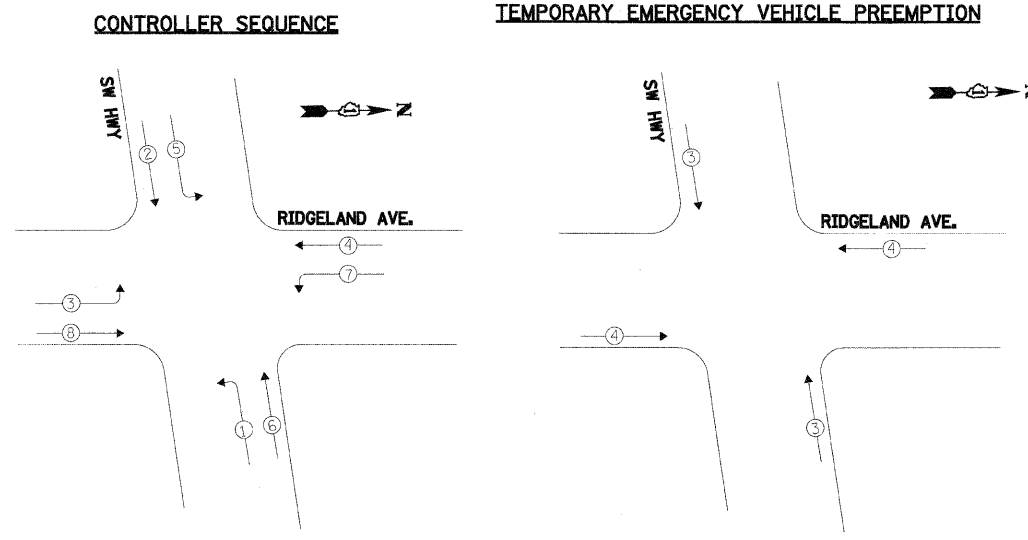


F.A. RTE.	SECTION	COUNTY	TOTAL SHEETS	SHEET NO.
3578	15VB-1-R-1	COOK	243	62
STA.		TO STA.		
FED. ROAD DIST. NO.		ILLINOIS FED. AID PROJECT		

CONTRACT #62388

**NOTE:**

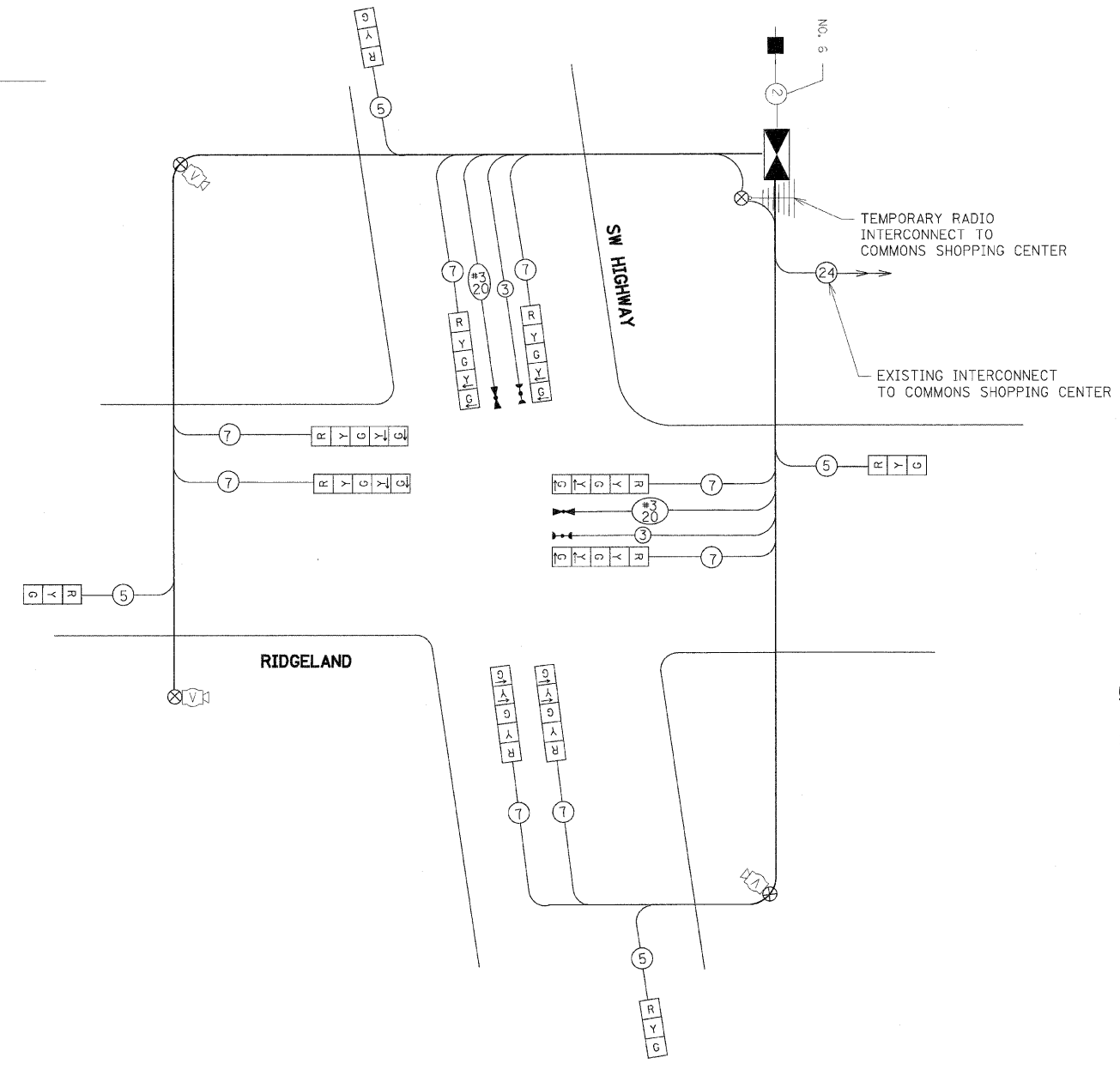
THE TRAFFIC SIGNAL CONTROLLER EQUIPMENT FOR THE PROJECT SHALL BE "ECONOLITE" TO MATCH THE EXISTING ADJACENT SYSTEM INSTALLATION



- LEGEND**
- ←○→ DUAL ENTRY PHASE
  - ←○→ PEDESTRIAN PHASE
  - \* NUMBER REFERS TO ASSOCIATED PHASE

**TEMPORARY PHASE DESIGNATION DIAGRAM**

TEMPORARY EMERGENCY VEHICLE PREEMPTOR TYPE		
EMERGENCY VEHICLE PREEMPTOR	3	4
MOVEMENT	←	←



- CABLE PLAN LEGEND**
- [R] TEMPORARY TRAFFIC SIGNAL SECTION OR PEDESTRIAN SIGNAL SECTION 12" (300 mm)
  - ☒ TEMPORARY CONTROLLER CABINET
  - ☐ TEMPORARY SERVICE INSTALLATION
  - DENOTES NUMBER OF CONDUCTORS. ALL CABLE NO. 14 EXCEPT AS INDICATED. ALL LOOP DETECTOR CABLE TO BE SHIELDED.
  - ∇ EMERGENCY VEHICLE LIGHT DETECTOR
  - CONFIRMATION BEACON
  - VEHICLE DETECTOR, INDUCTION LOOP
  - ⊙ PUSHBUTTON DETECTOR
  - [P] 12"(300mm) PEDESTRIAN SIGNAL SECTION
  - ▬ MICROWAVE VEHICLE SENSOR
  - ⊞ RADIO INTERCONNECT
  - ⊞ VIDEO DETECTION CAMERA
  - ⊗ WOOD POLE

**CONSTRUCTION NOTE:**

ALL LEFT-TURN PHASES WILL BE MAINTAINED THROUGHOUT THE DURATION OF CONSTRUCTION

I.D.O.T. TRAFFIC SIGNAL INSTALLATION ELECTRICAL SERVICE REQUIREMENTS					TOTAL WATTAGE
TYPE	NO. LAMPS	WATTAGE INCAND.	WATTAGE LED	% OPERATION	
SIGNAL (RED)	12	135	17	0.50	810
(YELLOW)	12	135	25	0.25	405
(GREEN)	12	135	15	0.25	405
ARROW	8	135	12	0.16	162
CONTROLLER	1	100	100	1.00	100
TOTAL =					1882

ENERGY COSTS TO: ILLINOIS DEPARTMENT OF TRANSPORTATION  
 201 WEST CENTER COURT  
 SCHAUMBURG, ILLINOIS 60196-1096

ENERGY SUPPLY CONTACT: DOUG BROWNFIELD  
 PHONE: (708) 235-2339  
 COMPANY: COMED

**TEMPORARY CABLE PLAN**

**INFRASTRUCTURE ENGINEERING** | INCORPORATED  
 33 West Monroe | Suite 1540 | Chicago, IL 60603  
 P 312.425.9560 | F 312.425.9564 | www.infrastructure-eng.com

REVISIONS	DATE

ILLINOIS DEPARTMENT OF TRANSPORTATION  
**VILLAGE OF CHICAGO RIDGE**  
**TEMPORARY CABLE PLAN**  
**TEMPORARY PHASE DESIGNATION**  
**SOUTHWEST HWY/RIDGELAND AVE.**

SCALE: DATE: 06-17-2009

DRAWN BY: BL  
 DESIGNED BY: ERR  
 CHECKED BY: RB

6/16/2009 6:57:11 PM F:\P-04\1605\Design\dgn\sheet\10-1605\_S-Cable\_Plan-03.dgn