

GENERAL NOTES

- Fasteners shall be high strength bolts. Bolts M22, open holes 24mm ϕ , unless otherwise noted.
- Calculated mass of structural steel: M270M Grade 345 = 7860 kg
- No field welding is permitted except as specified in the contract documents.
- Anchor bolts shall be set before bolting diaphragms over supports.
- The structural steel bearing plates of the Elastomeric Bearing Assembly & the plates of the Steel Extensions shall conform to the requirements of AASHTO M270M Grade 345.
- The main load carrying member components subject to tensile stress shall conform to the Supplemental Requirements for Notch Toughness Zone 2. These components are the wide flange beams and all splice plate material except fill plates.
- Reinforcement bars shall conform to the requirements of ASTM A706M Grade 420. See Special Provisions.
- Reinforcement bars designated (E) shall be epoxy coated.
- Layout of slope protection system may be varied in the field to suit ground conditions as directed by the Engineer.
- Plan dimensions and details relative to existing structure have been taken from existing plans and are subject to nominal construction variations. It shall be the Contractor's responsibility to verify such dimensions and details in the field and make necessary approved adjustments prior to construction or ordering of materials. Such variations shall not be cause for additional compensation for a change in the scope of the work, however, the Contractor will be paid for the quantity actually furnished at the unit price for the work.
- Bearing seat surfaces shall be constructed or adjusted to the designated elevations within a tolerance of 3 mm. Adjustment shall be made either by grinding the surface or by shimming the bearing. Two 3 mm adjusting shims, of the dimensions of the bottom bearing plate, shall be provided for each bearing in addition to all other plates or shims. For Type I Elastomeric Bearings, two 3 mm adjusting shims shall be provided for each bearing and placed as detailed.
- The Contractor shall drive test piles to 110% of the nominal required bearing specified in production locations at substructures specified or approved by the Engineer before ordering the remainder of piles.
- Concrete Sealer shall be applied to the seat area of the abutments and Piers 6, 11 and 15.
- When the deck pour is stopped for the day at one or more of the transverse Bonded Construction Joints in the deck Pouring Sequence as shown, the next pour shall not be made until both of the following requirements are met:
 - At least 72 hours shall have elapsed from the end of the previous pour.
 - The concrete strength shall have attained a minimum flexural strength of 4.5 MPA or a minimum compressive strength of 24 MPA.
- All construction joints shall be bonded.
- All dimensions are in millimeters (mm) except as noted.
- The Inorganic zinc rich primer/Acrylic/Acrylic Paint System shall be used for shop and field painting of new structural steel except where otherwise noted. The color of the final finish coat for all interior steel surfaces shall be gray, Munsell No 5B 7/1. The color of the final finish coat for the exterior and bottom flange of the fascia beams shall be reddish brown Munsell No. 2.5YR 3/4. See special provision for "Cleaning and Painting New Metal Structures". The SSPC QP-1 Painting Contractor Certification will be required for this contract. Field painting of new structural steel provided by the Fabrication Contract is included in this contract. All work for Cleaning and Painting Structural Steel provided by the Fabrication Contract will not be paid for separately but shall be considered as included in the contract unit price for Erecting Structural Steel. The cost associated with shop priming the new Structural Steel provided by the Fabrication Contract will be included in that contract.
- Prior to beginning any work within or above the railroad right-of-way, the Contractor shall comply with the requirements set forth by Articles 107.11 and 107.12 of the Standard Specifications.
- The Contractor is solely responsible for arranging access to the site with the necessary property owners. In addition, the contractor is advised of overhead utility lines that may potentially interfere with certain construction equipment. The Contractor shall use appropriate equipment that provides adequate clearance to the utility lines or make arrangements with the respective utility companies to accommodate his specific equipment. No additional compensation will be considered for gaining access to the site, or addressing utility accommodations or any associated delays.
- See the General Notes on Sheet 2 for notes regarding access to the railroad right-of-way.
- See Sheet SA 8 for salvaging of existing structural supports.
- Seal coat thickness design is based on the Estimated Water Surface Elevation (EWSE). Cofferdam design details and proposed changes in seal coat thickness shall be submitted to the Engineer for approval with the cofferdam design.
- Protective coat shall be applied to the entire surface of the sidewalk barrier.
- If the Contractor's procedures for existing beam removal involves placement of heavy equipment on the existing deck beams, a detailed procedure shall be submitted to the Engineer for approval. The procedure shall include calculations, sealed by an Illinois Licensed Structural Engineer, verifying the structural adequacy of the beams for the proposed loads. Cost included with Removal of Existing Structures.

25. The Contractor is advised that the existing PPC Deck beams are in a deteriorated condition with reduced load carrying capacity. It is the Contractor's responsibility to account for the condition of the beams when developing construction procedures for removal of the superstructure.

26. Slipforming of the concrete parapets is not allowed.

INDEX OF SHEETS

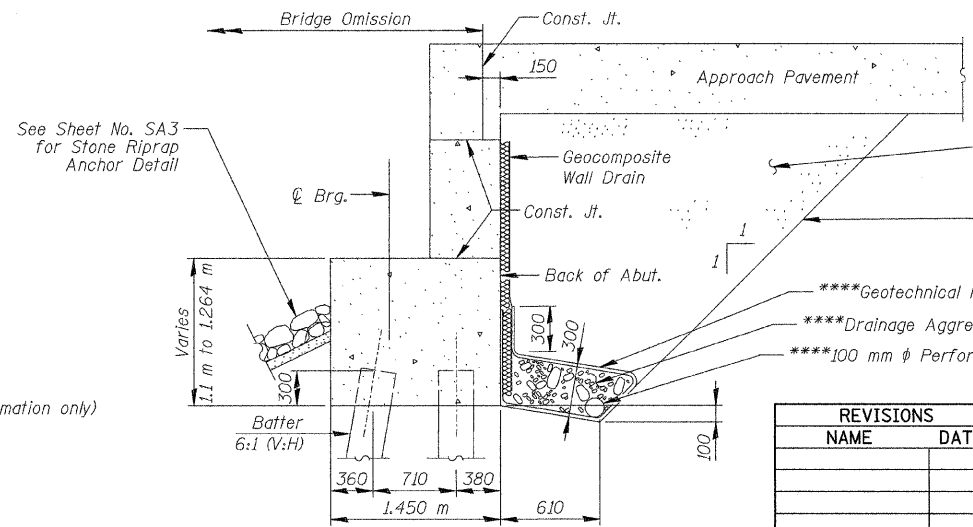
- SA1 General Plan and Elevation - Unit I
- SA2 General Plan and Elevation - Unit II
- SA3 General Plan and Elevation- Unit III & Unit IV
- SA4 General Notes, Total Bill of Mat'l & Index of Sheets
- SA5 Construction Staging & Removal Details - Unit I
- SA6 Construction Staging & Removal Details - Unit II
- SA7 Construction Staging & Removal Details - Unit III & IV
- SA8 Temporary Superstructure Support Removal
- SA8A Temporary Superstructure Support Removal II
- SA9 Top of Slab Elevations - Unit I - A
- SA10 Top of Slab Elevations - Unit I - B
- SA11 Top of Slab Elevations - Unit I - C
- SA12 Top of Slab Elevations - Unit I - D
- SA13 Top of Slab Elevations - Unit III - A
- SA14 Top of Slab Elevations - Unit III - B
- SA15 Top of Slab Elevations - Unit III - C
- SA16 Top of Slab Elevations - Unit IV - A
- SA17 Top of Slab Elevations - Unit IV - B
- SA18 Top of Slab Elevations - Unit IV - C
- SA18A Top of Slab Elevations - APPR. PAVT
- SA19 Superstructure - Unit I
- SA20 Superstructure Details - Unit I - A
- SA21 Superstructure Details - Unit I - B
- SA22 Superstructure - Unit II
- SA23 Superstructure Details - Unit II
- SA23A Superstructure Details - Unit II - A
- SA24 Superstructure - Unit III
- SA25 Superstructure Details - Unit III - A
- SA26 Superstructure Details - Unit III - B
- SA27 Superstructure - Unit IV
- SA28 Superstructure Details - Unit IV - A
- SA29 Superstructure Details - Unit IV - B
- SA30 Modular Expansion Joint
- SA30A Modular Expansion Joint
- SA30B Modular Expansion Joint
- SA30C Expansion Joint Details
- SA31 Drainage Scupper Details
- SA32 Bicycle Railing Details I
- SA32A Bicycle Railing Details II
- SA33 Framing Plan - Unit I
- SA34 Framing Plan - Unit III
- SA35 Framing Plan - Unit IV
- SA35A End Diaphragms at Modular Jnts.
- SA36 Beam Details - Unit I
- SA37 Beam Details - Unit III
- SA38 Beam Details - Unit IV
- SA39 Lighting Support Bracket Details
- SA40 Bearing Details - Unit I South Abutment & Pier 3
- SA41 Bearing Details - Unit I Piers 1, 2, 4, & 5
- SA42 Bearing Details - Piers 6 & 11
- SA43 Steel Extension Details - Unit II
- SA44 Bearing Details - Unit III Piers 12, 13, 14 & 15
- SA45 Bearing Details - Unit IV Piers 15, 16, 17 and N. Abut
- SA46 Anchor Bolt Details
- SA47 South Abutment
- SA48 South Abutment Details
- SA49 North Abutment
- SA50 North Abutment Details
- SA51 Pier 1
- SA52 Pier 2
- SA53 Pier 3
- SA54 Pier 4
- SA55 Pier 5
- SA56 Piers 6 & 11 - Removal
- SA57 Pier 6
- SA58 Pier 12
- SA59 Pier 13
- SA60 Pier 14
- SA61 Pier 15
- SA62 Pier 16
- SA63 Pier 17
- SA64 Temporary Concrete Barrier
- SA65A Pile Detail
- SA66 to SA78 - Soil Boring Logs
- SA79 to SA110 - Interim Bridge Plans (For Information only)

SHEET SA 4 of SA110

F.A.U. RTE.	SECTION	COUNTY	TOTAL SHEETS	SHEET NO.
3578	15V B-1-R-1	COOK	243	91
STA.		TO STA.		
FED. ROAD DIST. NO.		ILLINOIS	FED. AID PROJECT	CONTRACT NO. 62388

TOTAL BILL OF MATERIAL

ITEM	UNIT	SUPER	SUB	TOTAL
* Porous Granular Embankment, Special	Cu m		171	171
Stone Riprap, Class A4	Sq m		623	623
Filter Fabric	Sq m		623	623
Removal of Existing Structures	Each		1	1
Concrete Removal	Cu m	85.8	12.5	98.3
Structure Excavation	Cu m		1,491	1,491
Cofferdam Excavation	Cu m		560	560
Cofferdam (Location - 1)	Each		1	1
Cofferdam (Location - 2)	Each		1	1
Concrete Structures	Cu m		1,378.7	1,378.7
Concrete Superstructure	Cu m	1,798.2		1,798.2
Bridge Deck Grooving	Sq m	4,971		4,971
Seal Coat Concrete	Cu m		155.5	155.5
Protective Coat	Sq m	7,366	16	7,382
** Furnishing and Erecting Structural Steel	kg	7,860		7,860
*** Erecting Structural Steel	L Sum	1		1
Stud Shear Connectors	Each	26,160		26,160
Reinforcement Bars, Epoxy Coated	kg	255,760	91,520	347,280
Elastomeric Bearing Assembly, Type I	Each	72		72
Elastomeric Bearing Assembly, Type II	Each	46		46
Furnishing Steel Piles HP310X79	m		3,599.2	3,599.2
Driving Piles	m		3,599.2	3,599.2
Test Pile Steel HP310X79	Each		7	7
Pile Shoes	Each		276	276
Name Plates	Each	1		1
Concrete Sealer	Sq m		99	99
Geocomposite Wall Drain	Sq m		109	109
* Pipe Underdrains for Structures 100mm	m		64	64
* Temporary Soil Retention System	Sq m		61.6	61.6
Bicycle Railing	m	417.6		417.6
Protective Shield	Sq m	371.4		371.4
Drainage Scuppers, DS-II	Each	34		34
Bar Splicers	Each	3,567	418	3,985
* Jacking Existing Superstructure	L Sum			1
* Tie-Rod Assemblies	Each		24	24
Anchor Bolts, M24	Each		40	40
Anchor Bolts, M30	Each		136	136
Anchor Bolts, M36	Each		196	196
Preformed Joint Strip Seal	m	64.3		64.3
* Modular Expansion Joint 160mm	m		36.6	36.6
* Cleaning Bridge Scuppers and Downspouts	Each		8.0	8.0
* Mechanical Splicers	Each	1,094		1,094
* Conduit Attached To Structure, 50 mm Dia. Rigid Galvanized Steel, PVC Coated	m	424		424



TYPICAL SECTION THRU ABUTMENT

Dimensions ϕ Rt. L's

All drainage system components shall extend to 600 mm from the end of each wingwall, except an outlet pipe shall extend until intersecting with the side slopes. The pipe shall drain into concrete headwalls.

* See Special Provisions
 ** See General Note 2
 *** For erecting 812,820 kg of structural steel to be delivered to the site by the Fabrication Contractor.

REVISIONS	
NAME	DATE

ILLINOIS DEPARTMENT OF TRANSPORTATION
GENERAL NOTES, TOTAL BILL OF MAT'L & INDEX OF SHEETS
SOUTHWEST HIGHWAY OVER
B&O RAILROAD AND STONY CREEK
FAU 3578 SECTION 15V B-1-R-1
STRUCTURE NUMBER 016-2771
COOK COUNTY STATION 4+716.497
SCALE: NONE DRAWN BY: E. Mroozek
DATE: 6/17/09 CHECKED BY: G. Hottelrad

0:\DDOT\9556.A0\Drawings\STRUCT\04 gen notes.dgn
 9/24/2009 2:41:32 PM
 gvar:gcaglu(rdwj-lis)

