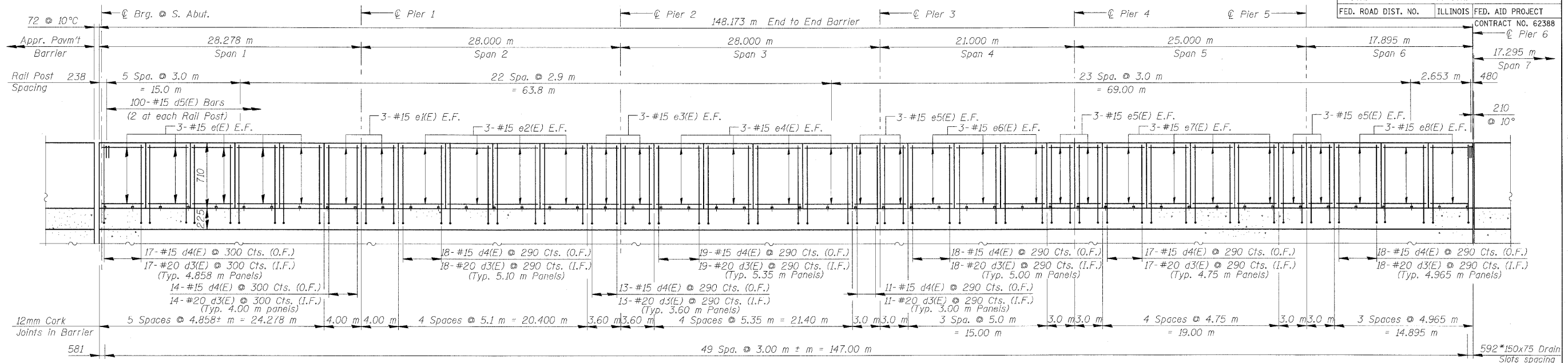


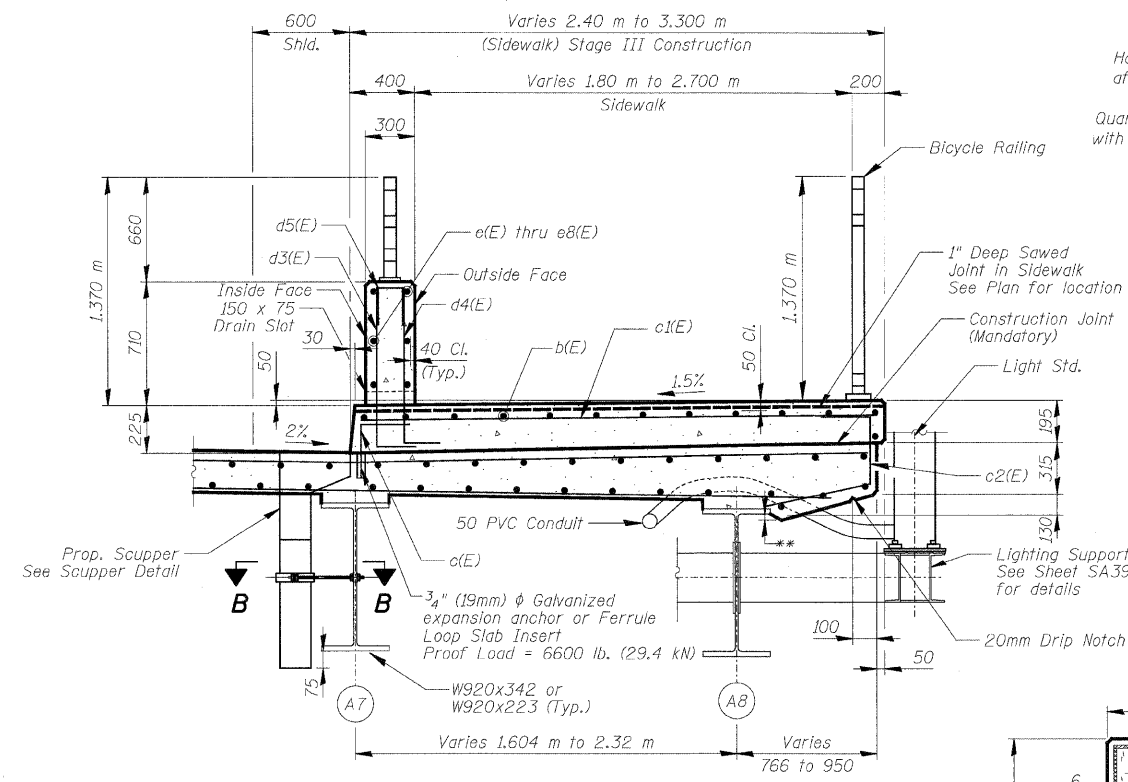
|                     |             |                           |              |           |
|---------------------|-------------|---------------------------|--------------|-----------|
| F.A.U. R.T.E.       | SECTION     | COUNTY                    | TOTAL SHEETS | SHEET NO. |
| 3578                | 15V B-1-R-1 | COOK                      | 243          | 109       |
| STA.                |             | TO STA.                   |              |           |
| FED. ROAD DIST. NO. |             | ILLINOIS FED. AID PROJECT |              |           |



**ELEVATION OF SIDEWALK BARRIER**

Looking North-West

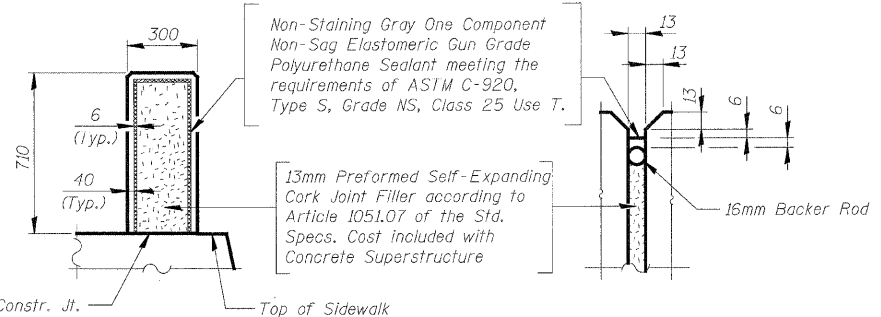
\* Drain Slots shall omit the vertical reinforcement and shall be 50mm min. from the edges of joints.



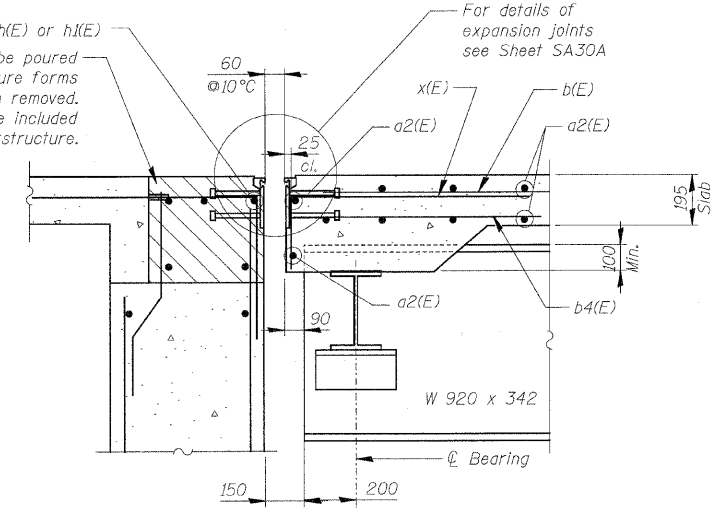
**SECTION THRU SIDEWALK**

See Sheet SA21 for Section B-B and Scupper Drainage Details

\*\*Varies 10 to 110

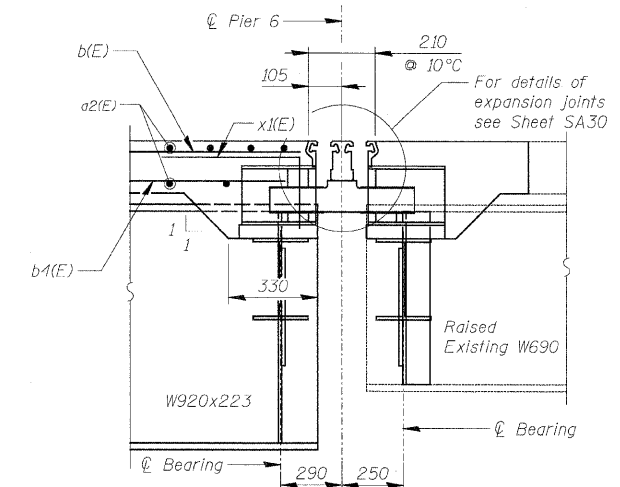


**BARRIER JOINT DETAILS**



**SECTION A-A**

See Sheet SA19 for Section location



**SECTION C-C**

**NOTES**

1. Reinforcement bars designated (E) shall be Epoxy Coated.
2. Bars indicated thus 20 x 3 - #15 etc. indicates 20 lines of bars with 3 lengths per line.
3. All dimensions are in millimeters (mm) except as noted.
4. The cost of expansion anchors/inserts is included in the cost of Reinforcement Bars, Epoxy Coated.
5. In lieu of providing the d3(E) & d4(E) dowels bars as shown, the contractor, at his option and expense, can submit to the engineer for his review and approval an alternate detail to drill and grout the bars. No additional compensation will be allowed if the contractor elects to use the alternate detail.

| REVISIONS |      | ILLINOIS DEPARTMENT OF TRANSPORTATION |                            |
|-----------|------|---------------------------------------|----------------------------|
| NAME      | DATE | SUPERSTRUCTURE DETAILS - UNIT I - A   |                            |
|           |      | SOUTHWEST HIGHWAY OVER                |                            |
|           |      | B&O RAILROAD AND STONY CREEK          |                            |
|           |      | FAU 3578                              | SECTION 15V B-1-R-1        |
|           |      | STRUCTURE NUMBER                      | 016-2771                   |
|           |      | COOK COUNTY                           | STATION 4+716.497          |
|           |      | SCALE: NONE                           | DRAWN BY: M. Tryon         |
|           |      | DATE: 6/17/09                         | CHECKED BY: A. Yargolouglu |

C:\DOT\9556\_A0\Drawings\STRUCT\20\_Deck\_Details\Unit I\_A.dgn  
 6/26/2009 14:27 AM  
 ksp@pcr(Rdwy.L)

