

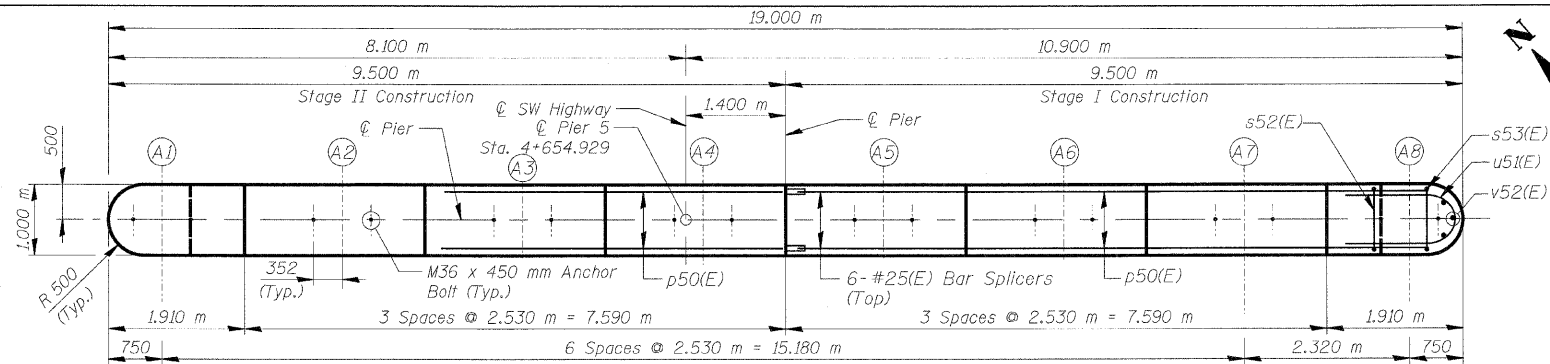
NOTES:

Space Reinforcement in cap to miss anchor bolts.
All edges shall have standard 20 mm chamfer except as noted.
Four steps monolithically with cap.

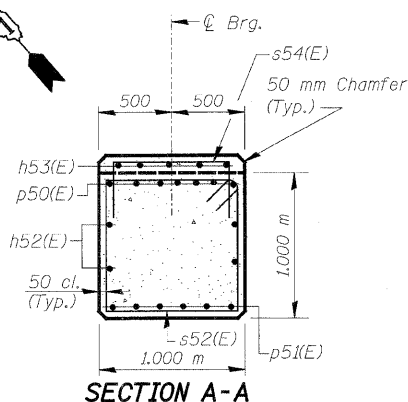
| TYP. LAP SPLICE | |
|-----------------|----------|
| BAR SIZE | MIN. LAP |
| #15 | 890 mm |
| #20 | 1,110 m |
| #25 | 1,850 m |

NOTE: Use a min. lap splice of 640 for w50(E) & w51(E) bars

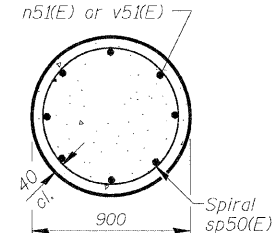
| F.A.U. RTE. | SECTION | COUNTY | TOTAL SHEETS | SHEET NO. |
|---------------------|-------------|------------------|--------------|-----------|
| 3578 | 15V B-1-R-1 | COOK | 243 | 150 |
| STA. TO STA. | | FED. AID PROJECT | | |
| FED. ROAD DIST. NO. | | ILLINOIS | | |
| CONTRACT NO. 62388 | | | | |



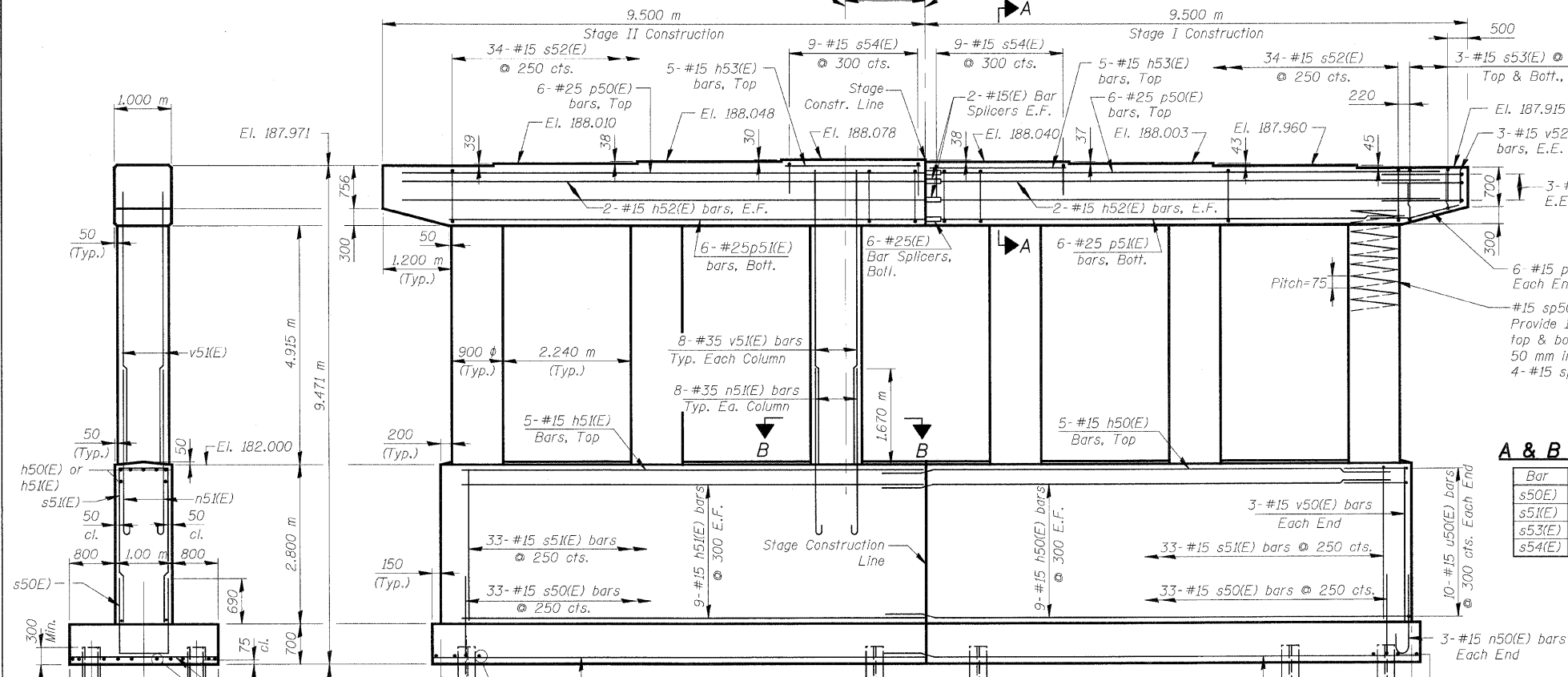
TOP PLAN



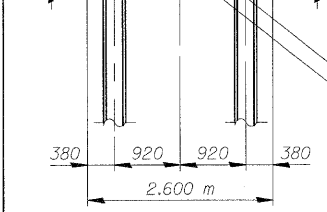
SECTION A-A



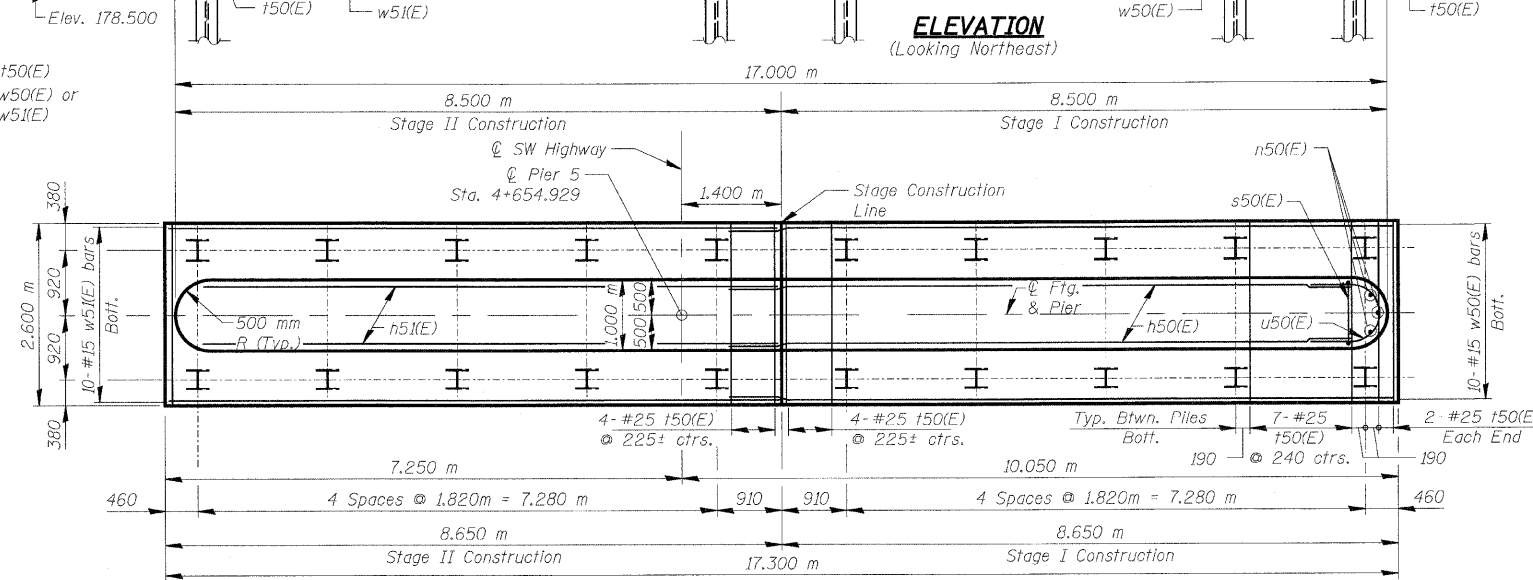
SECTION B-B



ELEVATION (Looking Northeast)



END VIEW



FOOTING PLAN

BILL OF MATERIAL

| Bar | No. | Size | Length (m) | Shape |
|----------------------------------|-----|------|----------------|-------|
| h50(E) | 23 | #15 | 8,940 | — |
| h51(E) | 23 | #15 | 7,950 | — |
| h52(E) | 8 | #15 | 8,950 | — |
| h53(E) | 10 | #15 | 2,430 | — |
| n50(E) | 6 | #15 | 1,480 | — |
| n51(E) | 48 | #35 | 3,050 | — |
| p50(E) | 12 | #25 | 8,950 | — |
| p51(E) | 12 | #25 | 8,300 | — |
| p52(E) | 12 | #15 | 1,830 | — |
| s50(E) | 66 | #15 | 3,500 | — |
| s51(E) | 66 | #15 | 6,400 | — |
| s52(E) | 68 | #15 | 3,880 | — |
| s53(E) | 12 | #15 | 2,400 | — |
| s54(E) | 18 | #15 | 1,800 | — |
| sp50(E) | 6 | #15 | * 4,970 | — |
| u50(E) | 68 | #25 | 2,500 | — |
| u51(E) | 6 | #20 | 3,590 | — |
| v50(E) | 6 | #15 | 2,750 | — |
| v51(E) | 48 | #35 | 5,720 | — |
| v52(E) | 6 | #15 | 0,600 | — |
| w50(E) | 10 | #15 | 9,290 | — |
| w51(E) | 10 | #15 | 8,550 | — |
| Structure Excavation | | | m ² | 95 |
| Concrete Structures | | | m ² | 118.1 |
| Reinforcement Bars, Epoxy Coated | | | kg | 9,420 |
| Bar Splicers | | | Each | 16 |
| Furnishing Steel Piles HP310x79 | | | m | 209.0 |
| Driving Piles | | | m | 209.0 |
| Test Pile Steel HP310x79 | | | Each | 1 |
| Pile Shoes | | | Each | 20 |

* Height of spiral

A & B DIMENSIONS

| Bar | A | B |
|--------|-----|---------|
| s50(E) | 900 | 1,300 m |
| s51(E) | 900 | 2,750 m |
| s53(E) | 900 | 750 |
| s54(E) | 900 | 450 |

BARS n50(E) & n51(E)

BAR p52(E)

BARS s50(E), s51(E) s53(E) & s54(E)

BAR s52(E)

BARS u50(E) & u51(E)

NOTES:

- Reinforcement bars designated (E) shall be Epoxy Coated.
- Bars indicated thus 20 x 3 - #15 etc. indicates 20 lines of bars with 3 lengths per line.
- All dimensions are in millimeters (mm) except as noted.
- Minimum lap for spirals 770 mm.

| REVISIONS | |
|-----------|------|
| NAME | DATE |
| | |
| | |
| | |
| | |
| | |

ILLINOIS DEPARTMENT OF TRANSPORTATION

PIER 5

SOUTHWEST HIGHWAY OVER B&O RAILROAD AND STONY CREEK

FAU 3578 SECTION 15V B-1-R-1

STRUCTURE NUMBER 016-2771

COOK COUNTY STATION 4+716.497

SCALE: NONE DRAWN BY: E. Mroozek

DATE: 6/17/09 CHECKED BY: G. Hatlestad



H:\cappan(Rdwy.L) 6/26/2009 8:43:39 AM
 G:\NDOT\9556_A0\Drawings\STRUCT\55_Pier_5.dgn