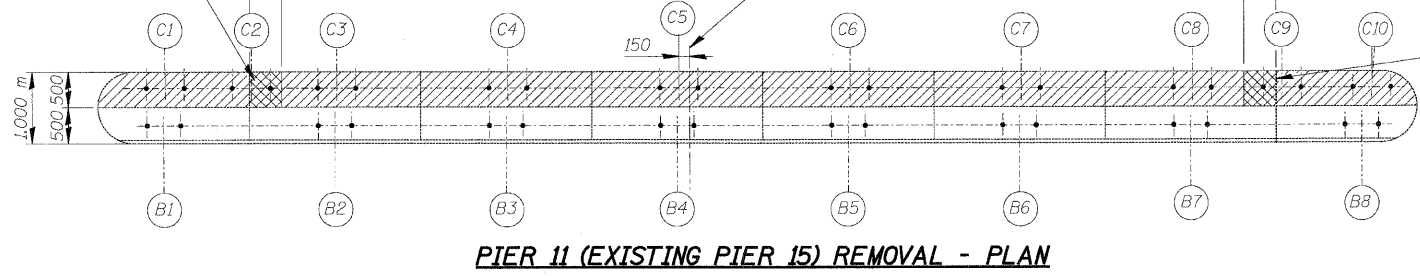
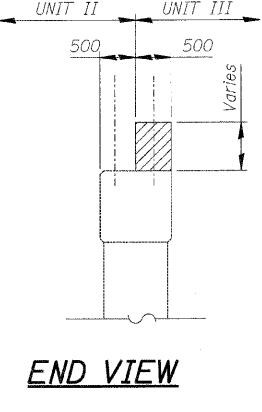
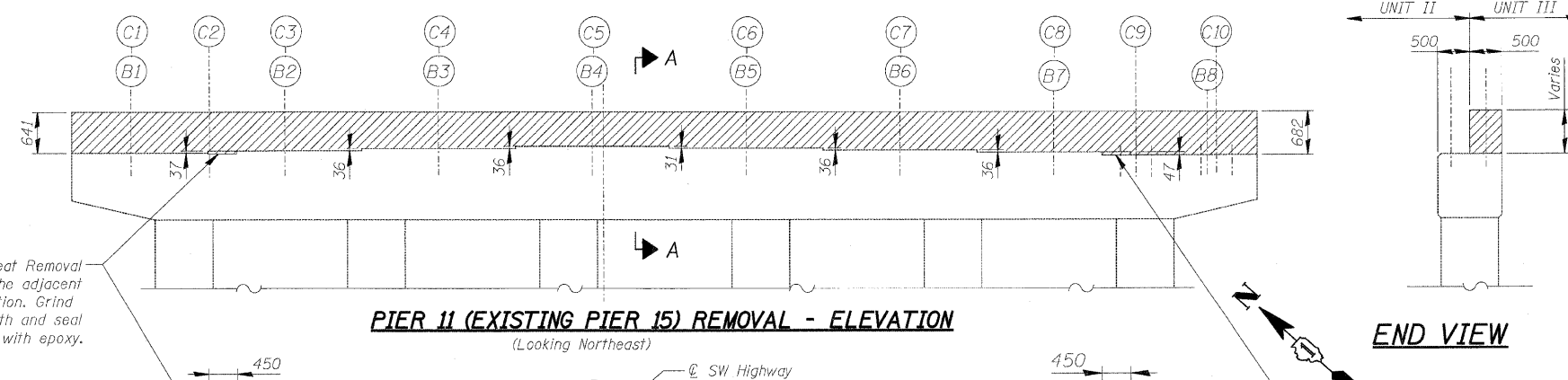
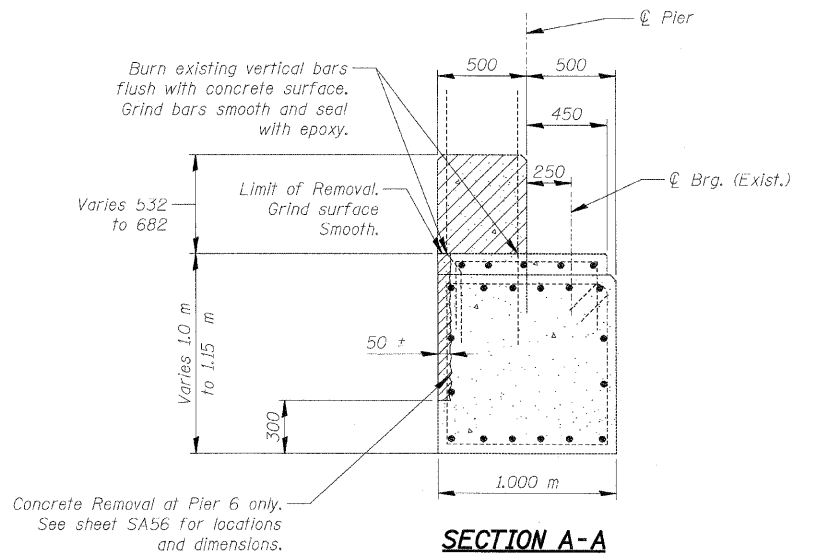
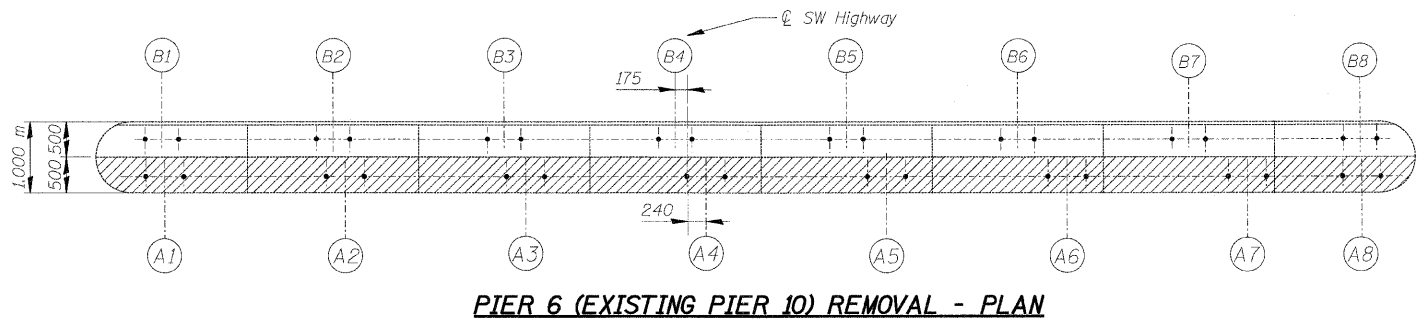
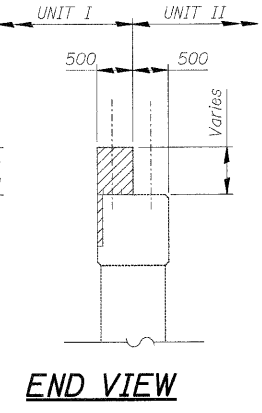
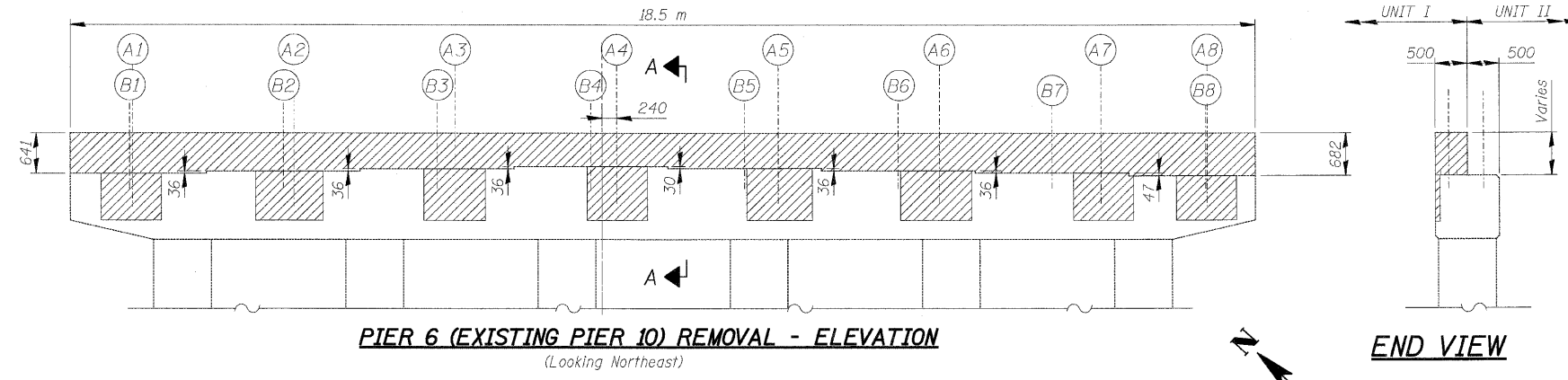


F.A.U. RTE.	SECTION	COUNTY	TOTAL SHEETS	SHEET NO.
3578	15V B-1-R-1	COOK	243	151
STA.		TO STA.		
FED. ROAD DIST. NO.		ILLINOIS FED. AID PROJECT		
CONTRACT NO. 62388				



Bearing Seat Removal to match the adjacent Seat Elevation. Grind bars smooth and seal with epoxy.

Bearing Seat Removal to match the adjacent Seat Elevation. Grind bars smooth and seal with epoxy.

- NOTES:**
- All dimensions are in millimeters (mm) except as noted.
  - All Pedestrian Traffic shall be prohibited during all stages of construction.

**BILL OF MATERIAL**

ITEM	UNIT	TOTAL
Concrete Removal	Cu. m	12.5

**LEGEND:**

- Concrete Removal
- Existing Structure
- Proposed Structure

REVISIONS	
NAME	DATE

**ILLINOIS DEPARTMENT OF TRANSPORTATION**  
**PIERS 6 & 11 - REMOVAL**  
**SOUTHWEST HIGHWAY OVER**  
**B&O RAILROAD AND STONY CREEK**  
**FAU 3578 SECTION 15V B-1-R-1**  
**STRUCTURE NUMBER 016-2771**  
**COOK COUNTY STATION 4+716.497**  
 SCALE: NONE DRAWN BY: **E. Mroozek**  
 DATE: 6/17/09 CHECKED BY: **G. Hatlestad**

Q:\IDOT\9556.A0\Drawings\STRUCT\56 Piers 6 & 11 Removal.dgn  
 H:\epenn\RDwy.L\isle 6/26/2009 8:44:52 AM  
**PATRICK ENGINEERING INC.**  
 LISLE, ILLINOIS