

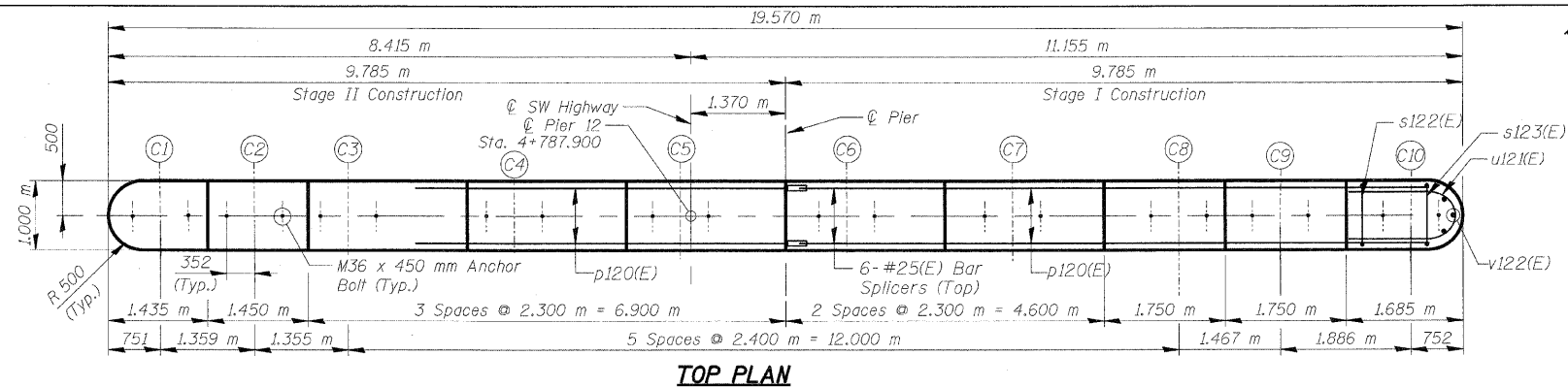
NOTES:

Space Reinforcement in cap to miss anchor bolts.
All edges shall have standard 20 mm chamfer except as noted.
Pour steps monolithically with cap.

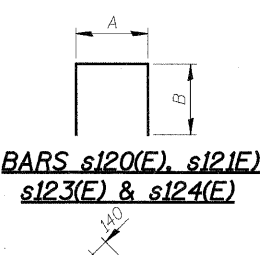
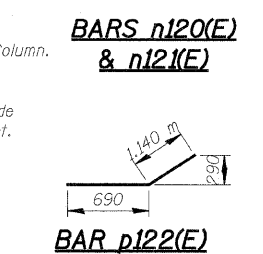
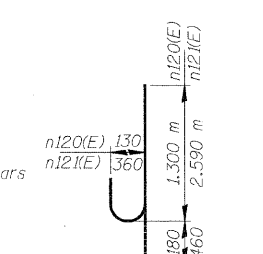
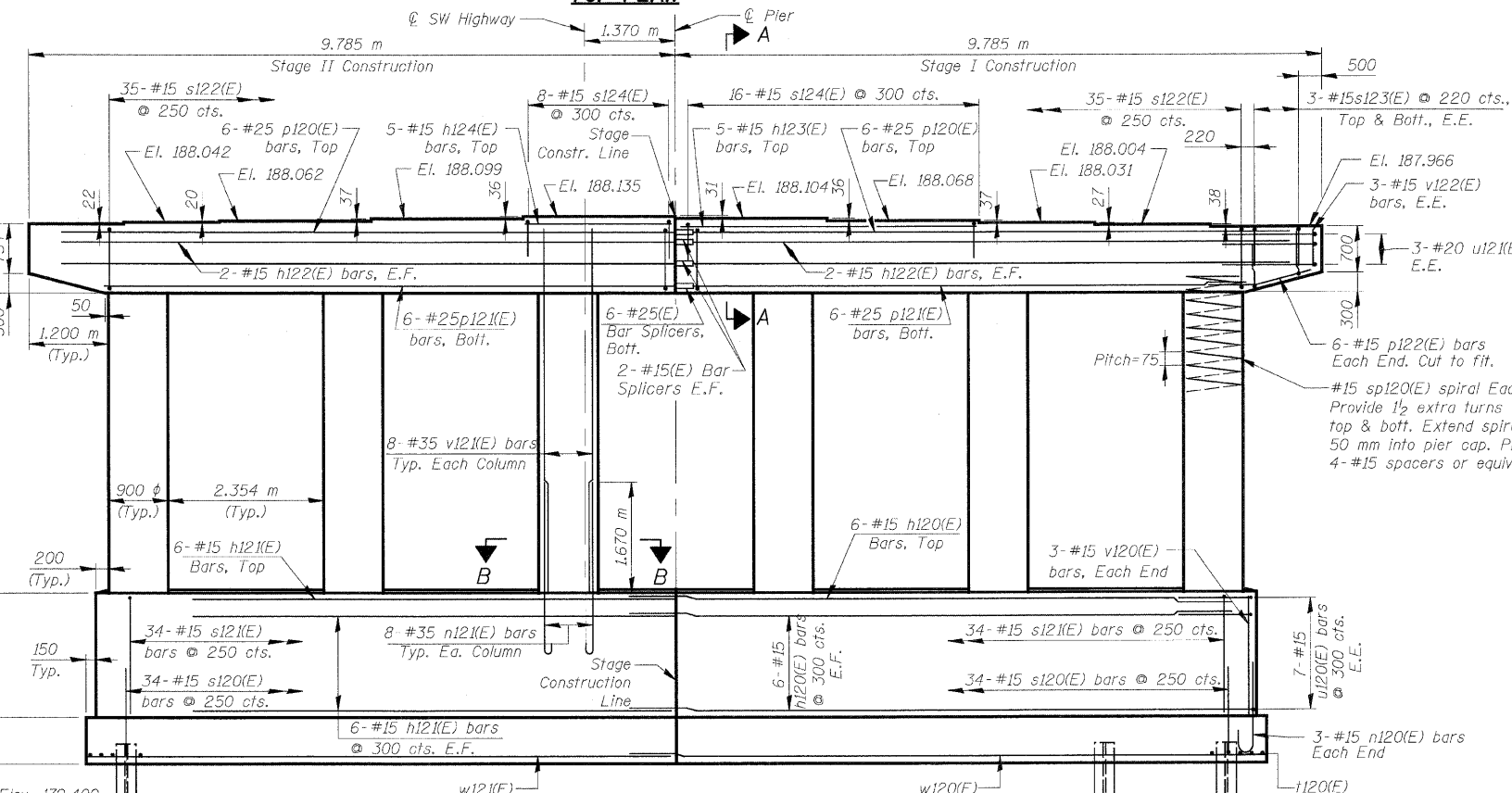
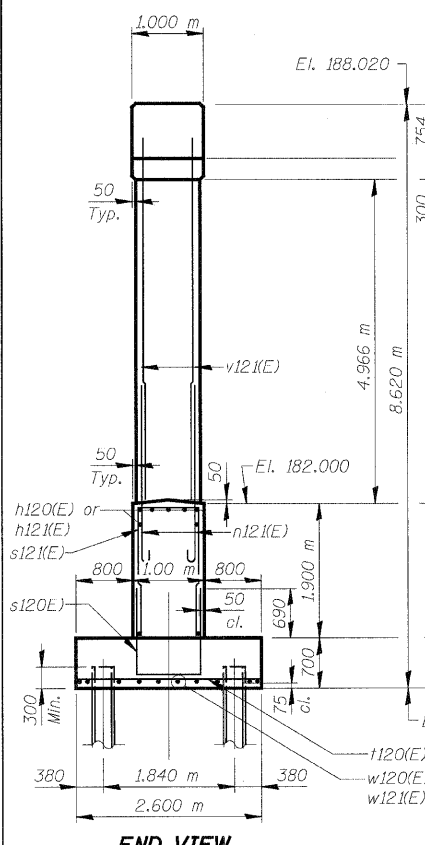
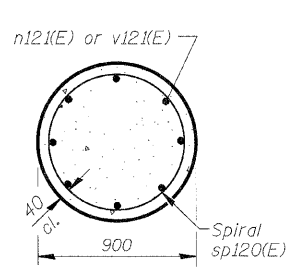
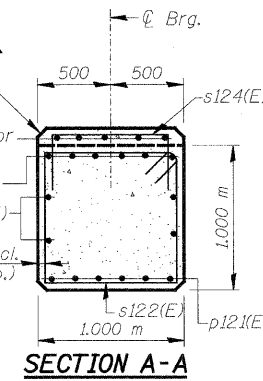
TYP. LAP SPLICE	
BAR SIZE	MIN. LAP
#15	890 mm
#20	1,110 m
#25	1,850 m

NOTE: Use a min. lap splice of 640 for w120(E) & w121(E) bars

F.A.U. RTE.	SECTION	COUNTY	TOTAL SHEETS	SHEET NO.
3578	15V B-1-R-1	COOK	243	153
STA.		TO STA.		
FED. ROAD DIST. NO.		ILLINOIS FED. AID PROJECT		
CONTRACT NO. 62388				

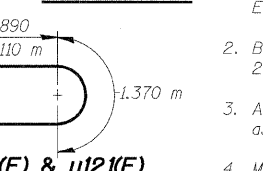
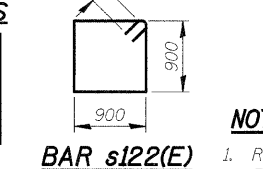


SHEET SA 58 of SA 110

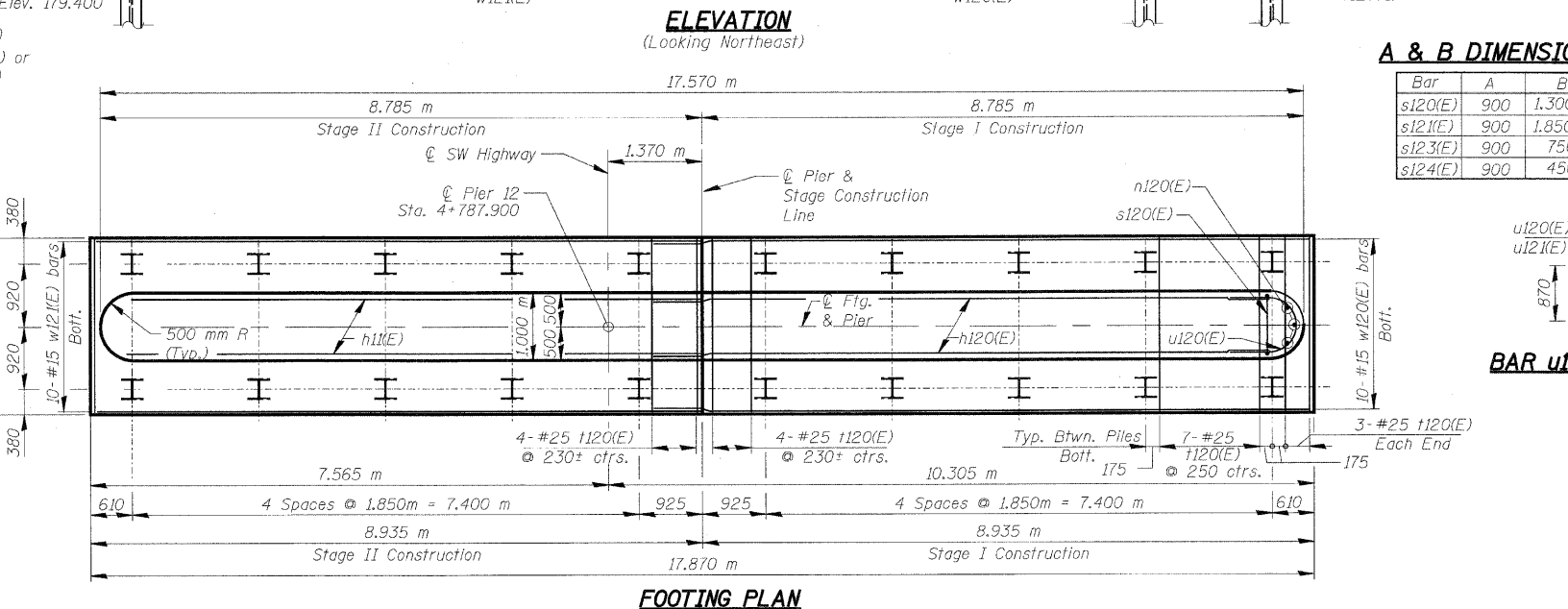


A & B DIMENSIONS

Bar	A	B
s120(E)	900	1,300 m
s121(E)	900	1,850 m
s123(E)	900	750
s124(E)	900	450



PILE DATA
Type: Steel HP 12x53 with pile shoes
Nominal Required Bearing: 1860 kN
Allowable Resistance Available: 620 kN
Est. Length: 6.5 m
No. Production Piles: 19
No. Test Piles: 1



BILL OF MATERIAL

Bar	No.	Size	Length (m)	Shape
h120(E)	18	# 15	9,230	—
h121(E)	18	# 15	8,240	—
h122(E)	8	# 15	9,240	—
h123(E)	5	# 15	4,500	—
h124(E)	5	# 15	2,200	—
n120(E)	6	# 15	1,480	—
n121(E)	48	# 35	3,050	—
p120(E)	12	# 25	9,240	—
p121(E)	12	# 25	8,590	—
p122(E)	12	# 15	1,830	—
s120(E)	68	# 15	3,500	—
s121(E)	68	# 15	4,600	—
s122(E)	70	# 15	3,880	—
s123(E)	12	# 15	2,400	—
s124(E)	24	# 15	1,800	—
sp120(E)	6	# 15	* 5,020	—
t120(E)	70	# 25	2,500	—
u120(E)	14	# 15	3,150	—
u121(E)	6	# 20	3,590	—
v120(E)	6	# 15	1,850	—
v121(E)	48	# 35	5,770	—
v122(E)	6	# 15	0,600	—
w120(E)	10	# 15	9,580	—
w121(E)	10	# 15	8,840	—
Structure Excavation		m ³	110	
Concrete Structures		m ³	105.5	
Reinforcement Bars, Epoxy Coated		kg	9,240	
Bar Splicers		Each	16	
Furnishing Steel Piles HP310x79		m	123.5	
Driving Piles		m	123.5	
Test Pile Steel HP310x79		Each	1	
Pile Shoes		Each	20	

* Height of spiral

NOTES:

- Reinforcement bars designated (E) shall be Epoxy Coated.
- Bars indicated thus 20 x 3 - #15 etc. indicates 20 lines of bars with 3 lengths per line.
- All dimensions are in millimeters (mm) except as noted.
- Minimum lap for spirals 770 mm.

REVISIONS

NAME	DATE

ILLINOIS DEPARTMENT OF TRANSPORTATION
PIER 12
SOUTHWEST HIGHWAY OVER
B&O RAILROAD AND STONY CREEK
FAU 3578 SECTION 15V B-1-R-1
STRUCTURE NUMBER 016-2771
COOK COUNTY STATION 4+716.497
SCALE: NONE DRAWN BY: E. Mroozek
DATE: 6/17/09 CHECKED BY: G. Hatlestad



O:\VDDT\9556_40\Drawings\STRUCT\58_Pier_12.dgn
 hkoepen(Rdwy, Lisle) 8/15/20 AM 6/28/2009