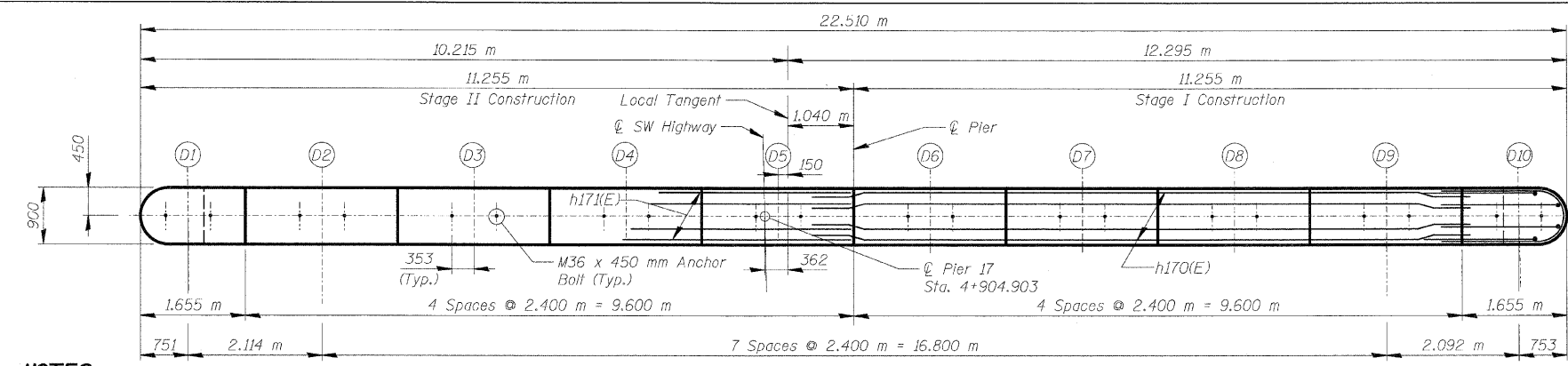
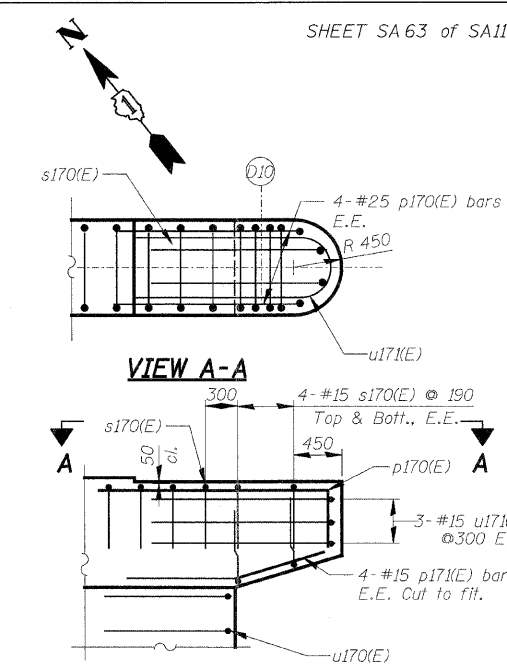


F.A.U. RTE.	SECTION	COUNTY	TOTAL SHEETS NO.	SHEET NO.
3578	15V B-1-R-1	COOK	243	158
STA.		TO STA.		
FED. ROAD DIST. NO.		ILLINOIS FED. AID PROJECT		
CONTRACT NO. 62388				



TOP PLAN

NOTES:
 Space Reinforcement in cap to miss anchor bolts.
 All edges shall have standard 20mm chamfer except as noted.
 Pour steps monolithically with cap.



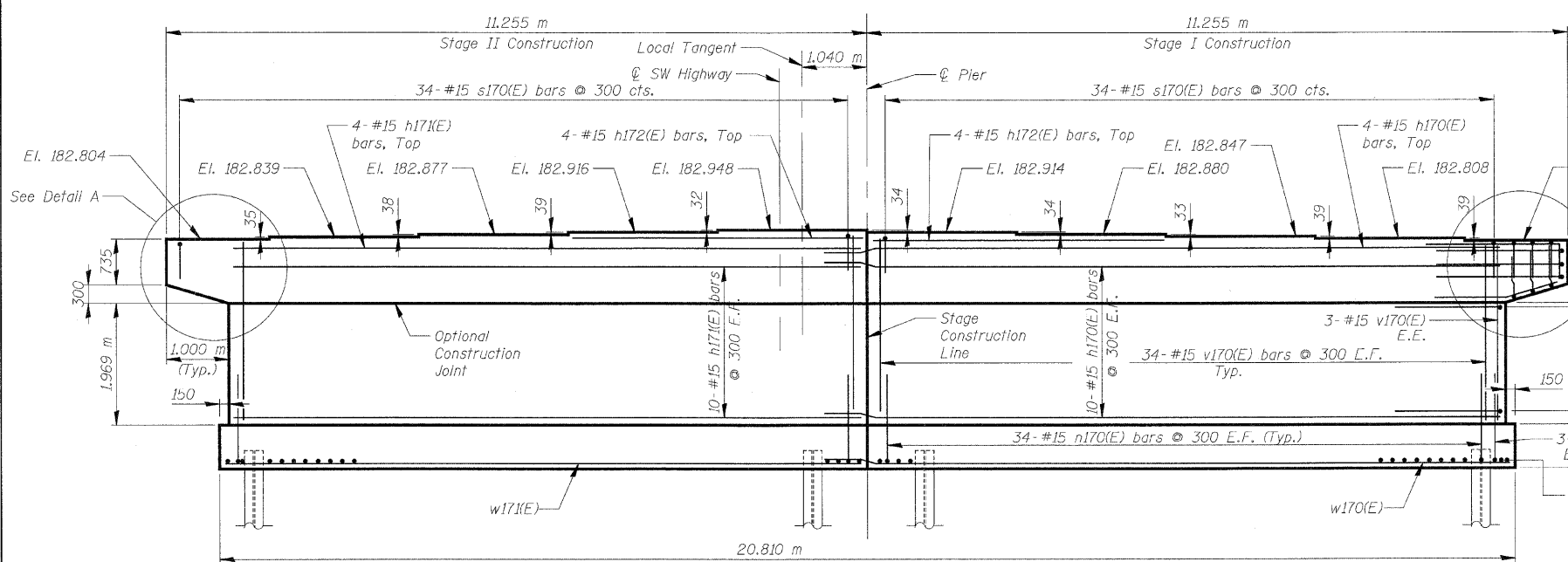
VIEW A-A

DETAIL A

v170(E), h170(E) & h172(E) not shown for clarity

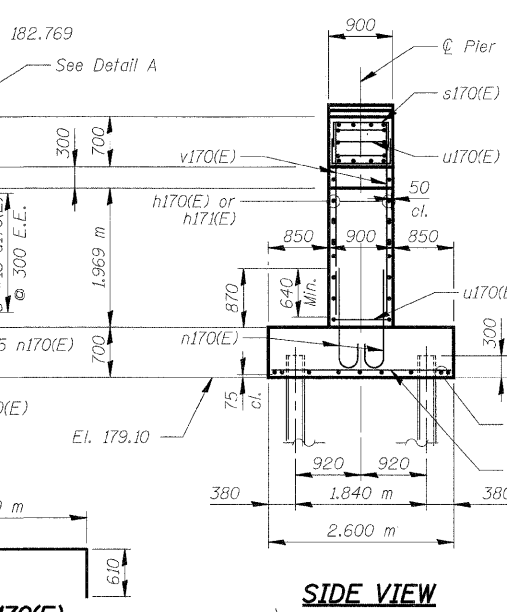
BILL OF MATERIAL

Bar	No.	Size	Length (m)	Shape
h170(E)	24	# 15	10.750	—
h172(E)	24	# 15	9.760	—
h172(E)	8	# 15	4.700	—
n170(E)	142	# 15	1.660	—
p170(E)	8	# 25	3.460	—
p172(E)	8	# 15	1.690	—
s170(E)	84	# 15	2.080	—
t170(E)	78	# 25	2.500	—
u170(E)	16	# 15	3.090	—
u172(E)	6	# 20	5.430	—
v170(E)	142	# 15	2.870	—
w170(E)	10	# 15	11.050	—
w172(E)	10	# 15	10.310	—
Structure Excavation		m ³	149	
Concrete Structures		m ³	96.1	
Reinforcement Bars, Epoxy Coated		kg	3,500	
Furnishing Steel Piles HP310x79		m	280.0	
Driving Piles		m	280.0	
Pile Shoes		Each	20	

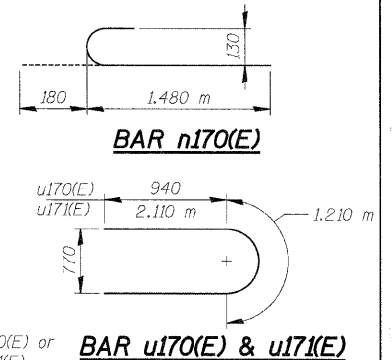


ELEVATION
Looking Northeast

PILE DATA
 Type: Steel HP 12x53 with pile shoes
 Nominal Required Bearing: 1860 kN
 Allowable Resistance Available: 620 kN
 Est. Length: 14.0 m
 No. Production Piles: 20
 No. Test Piles: None



SIDE VIEW



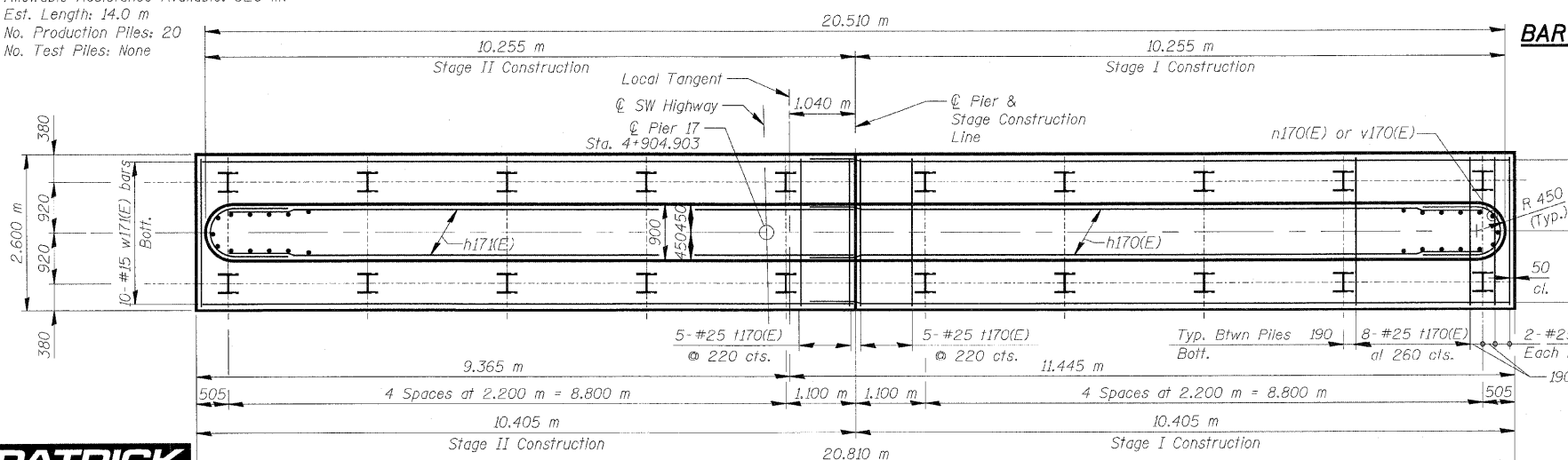
BAR n170(E)

BAR u170(E) & u172(E)

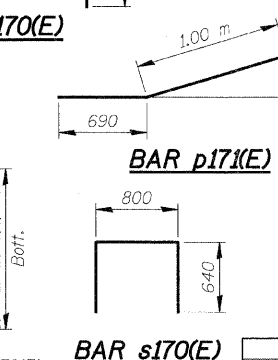
TYP. LAP SPLICE

BAR SIZE	MIN. LAP
#15	890 mm
#20	1,110 mm

NOTE: Use a min. lap splice of 640 for w170(E) & w172(E) bars



FOOTING PLAN



BAR p170(E)

BAR p172(E)

BAR s170(E)

LEGEND:
 E.E. Each End
 E.F. Each Face

NOTES:

1. Reinforcement bars designated (E) shall be Epoxy Coated.
2. Bars indicated thus 20 x 3 - #15 etc. indicates 20 lines of bars with 3 lengths per line.
3. All dimensions are in millimeters (mm) except as noted.

REVISIONS

NAME	DATE

ILLINOIS DEPARTMENT OF TRANSPORTATION
PIER 17
SOUTHWEST HIGHWAY OVER
B&O RAILROAD AND STONY CREEK
 FAU 3578 SECTION 15V B-1-R-1
 STRUCTURE NUMBER 016-2771
 COOK COUNTY STATION 4+716.497
 SCALE: NONE DRAWN BY: E. Mroozek
 DATE: 6/17/09 CHECKED BY: G. Hattestad

+koeppen(Rdw)_Lisle) 6/26/2009 8:16:22 AM
 D:\001\9556_40\Drawings\STRUCT\63_Pier_17.dgn

