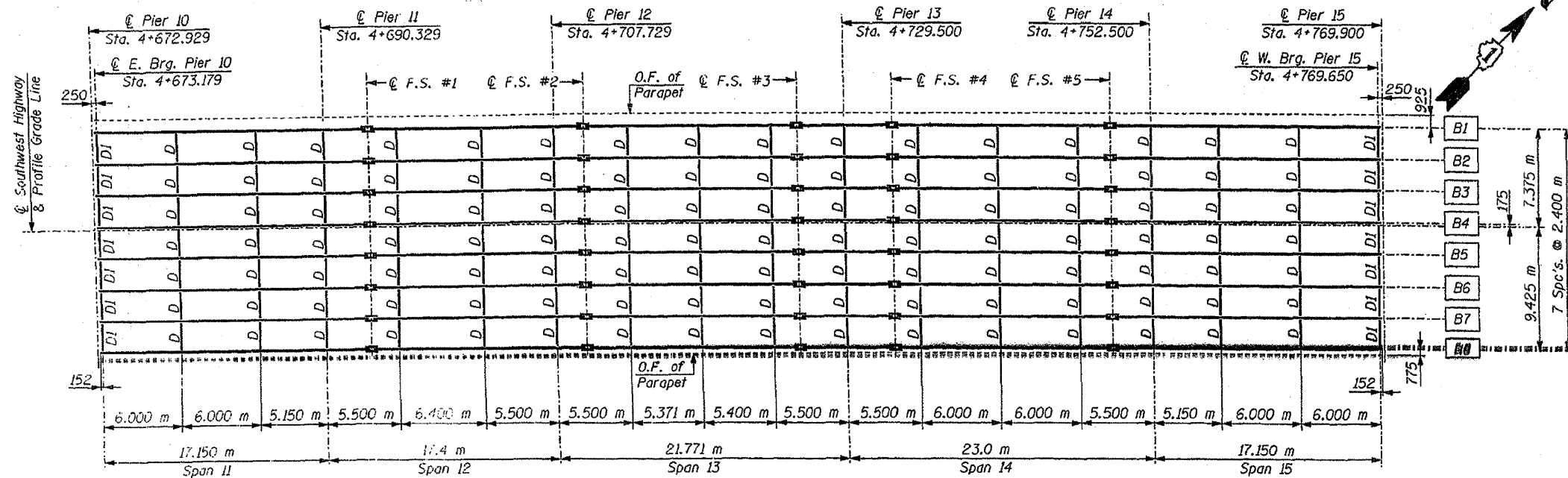
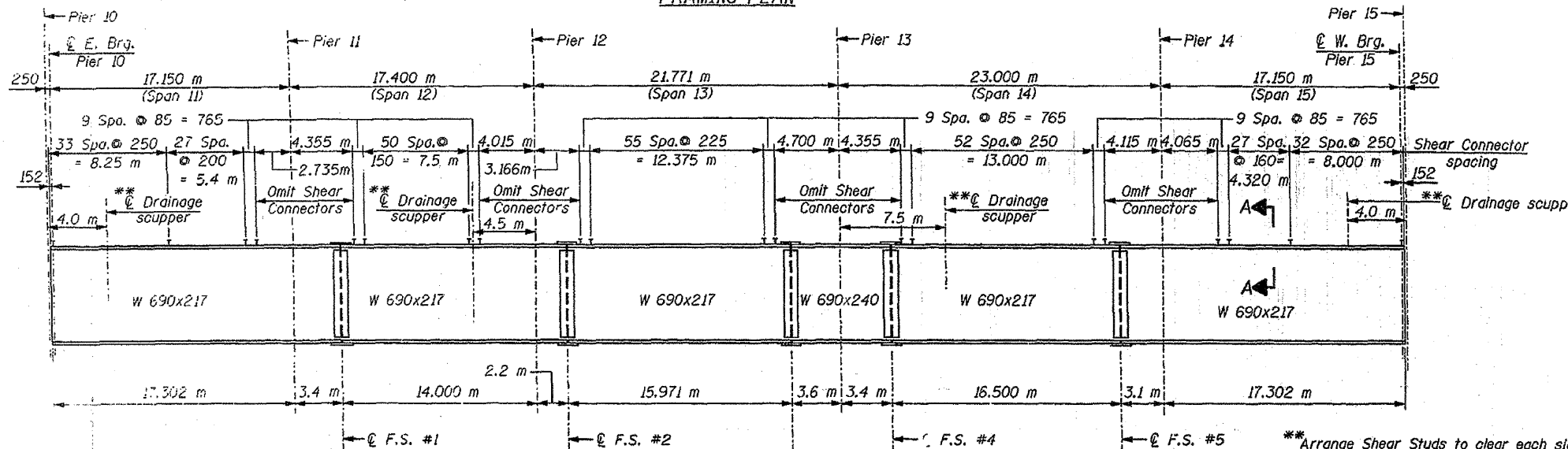


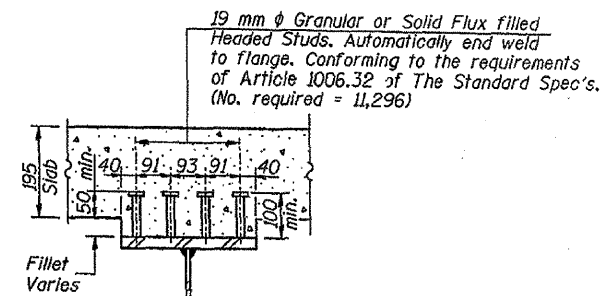
F.A.U. RTE.	SECTION	COUNTY	TOTAL SHEETS NO.	SHEET NO.
3578	15VB-1-R	COOK	243	188
STA. 4+665.229		TO STA. 4+777.600		
FED. ROAD DIST. NO. 7		ILLINOIS FED. AID PROJECT		



FRAMING PLAN



BEAM ELEVATION



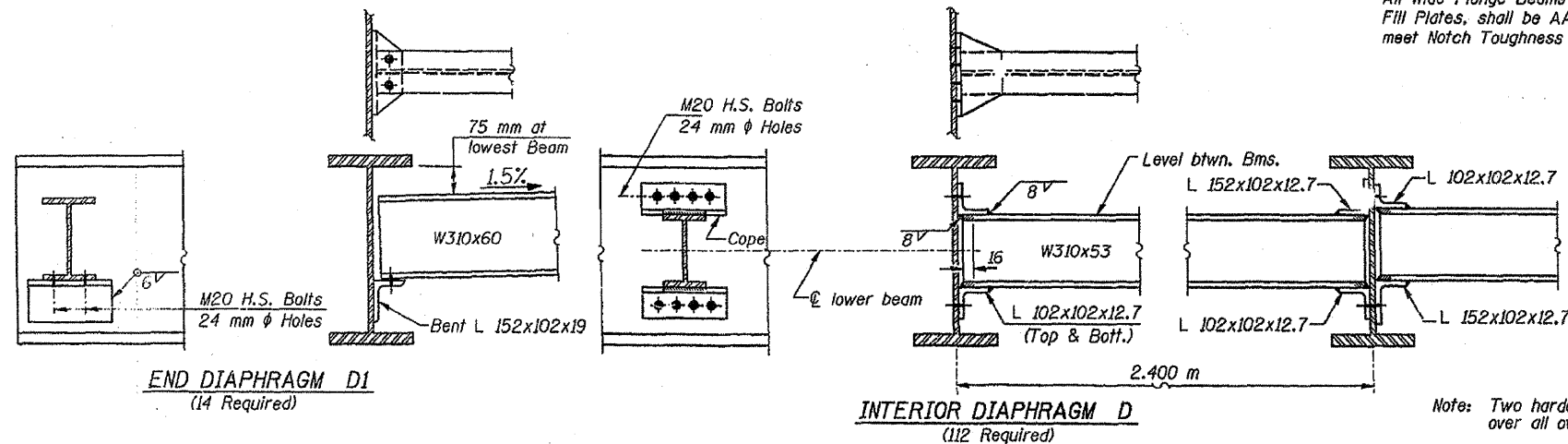
SECTION A-A
SHEAR CONNECTORS DETAIL

**Arrange Shear Studs to clear each side of Drainage Scupper by 75 mm (Min.) at Beams B1 & B7.

NOTE:
All Wide Flange Beams and Splice Plate Material, except Fillet Plates, shall be AASHTO M270 M Grade 345 and shall meet Notch Toughness Requirements.

NOTES:
For Top of Beam Elevations, Table of Moments and Reactions see Sht. S15.
For Field Splice Details, see Sht. S15.

All dimensions are in millimeters (mm) except as noted.



END DIAPHRAGM D1
(14 Required)

INTERIOR DIAPHRAGM D
(112 Required)

Note: Two hardened washers shall be required over all oversize holes for diaphragms.

REVISIONS	
NAME	DATE

ILLINOIS DEPARTMENT OF TRANSPORTATION

FRAMING PLAN

SOUTHWEST HIGHWAY OVER
B. & O.C.T. RAILROAD AND MELVINA DITCH
F.A.U. ROUTE 3578 SEC. 15VB-1-R
COOK COUNTY STATION 4+716.471
STRUCTURE NO. 016-0463

SCALE: DATE: 6/17/09
DRAWN BY: F. MUNIR
CHECKED BY: B. SHAH

CHRISTIAN - ROGE & ASSOC.
CHICAGO ILLINOIS

FOR INFORMATION ONLY