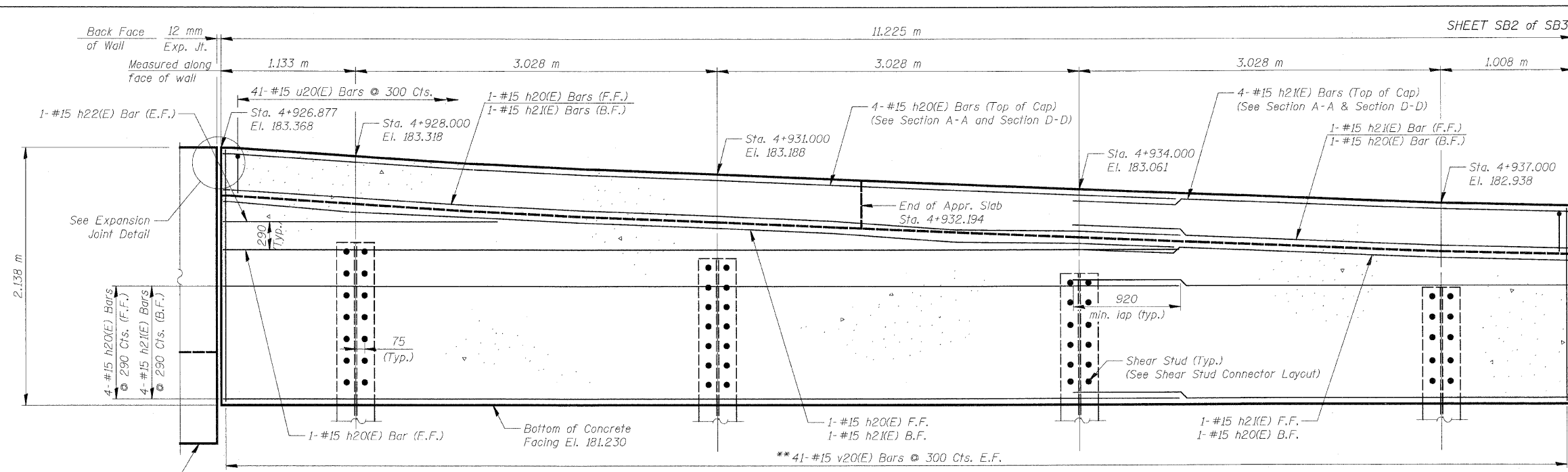
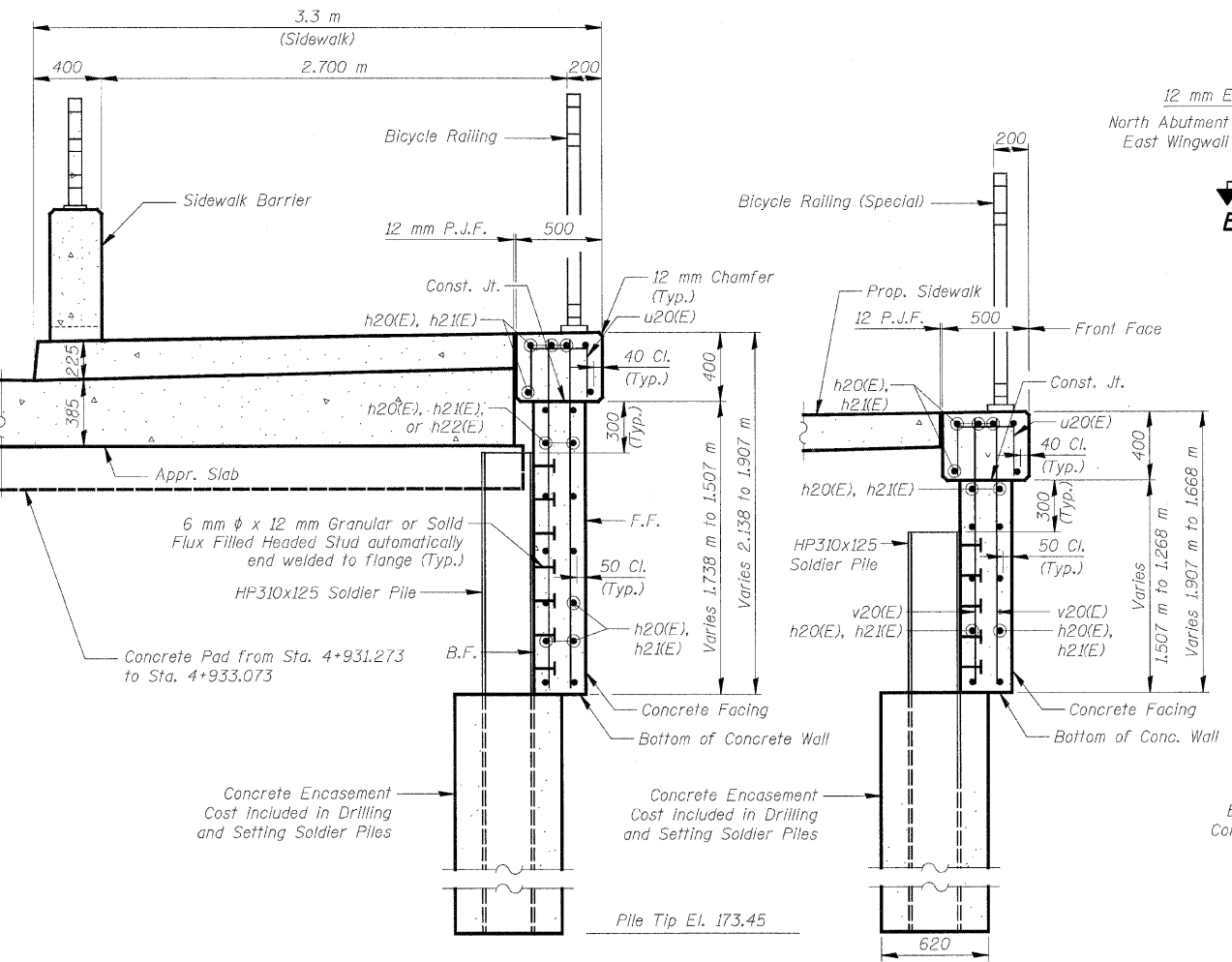


F.A.U. RTE.	SECTION	COUNTY	TOTAL SHEETS	SHEET NO.
3578	15V B-1-R-1	COOK	243	208
STA.		TO STA.		
FED. ROAD DIST. NO.		ILLINOIS FED. AID PROJECT		
CONTRACT NO. 62388				

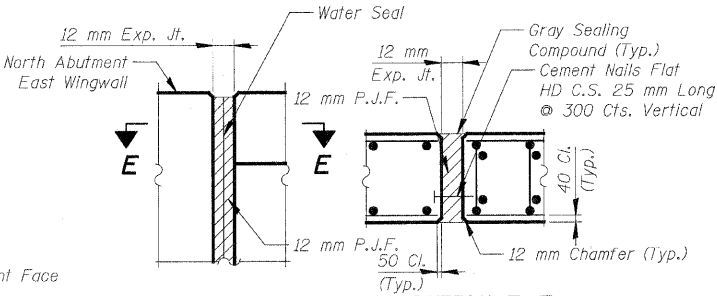


SECTION C-C

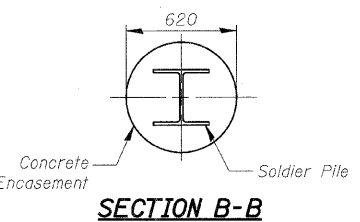


SECTION A-A

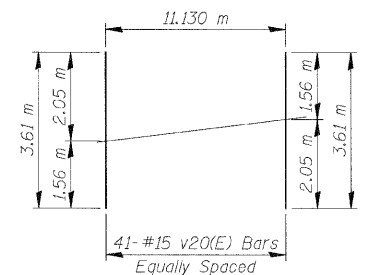
SECTION D-D



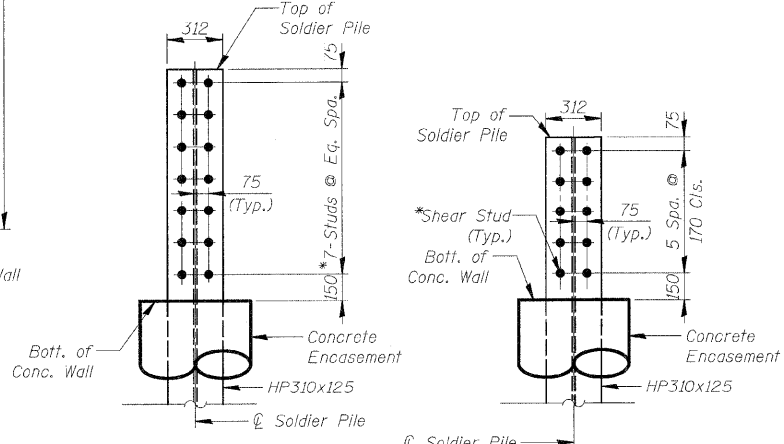
ELEVATION EXPANSION JOINT DETAIL



SECTION B-B



v20(E) FIELD CUTTING DIAGRAM
 **Order v20(E) Bars full length. Cut to fit as shown and use remainder of bars in other face.



PILES R1, R2 & R3 PILE R4

SHEAR STUD CONNECTOR LAYOUT

*6 mm phi x 150 mm Granular or Solid Flux Filled Studs automatically end welded to flange

BILL OF MATERIAL

Bar	No.	Size	Length (m)	Shape
h20(E)	18	#15	7.92	—
h21(E)	16	#15	4.15	—
h22(E)	2	#15	2.58	—
v20(E)	41	#15	3.61	—
u20(E)	41	#15	0.99	□
Stud Shear Connectors			Each	52
Reinforcement Bars, Epoxy Coated			kg	630

REVISIONS	
NAME	DATE

ILLINOIS DEPARTMENT OF TRANSPORTATION
RETAINING WALL DETAILS
SOUTHWEST HIGHWAY OVER
B&O RAILROAD AND STONY CREEK
 FAU 3578 SECTION 15V B-1-R-1
 STRUCTURE NUMBER 016-2771
 COOK COUNTY STATION 4+716.497
 SCALE: NONE DRAWN BY: M. Tryon
 DATE: 6/17/09 CHECKED BY: A. Yargoolgu

H:\open\rdwy_l\ise\6/26/2009 8:39:45 AM
 G:\NIDOT\9556_A0\Drawings\STRUCT\Retaining Wall\02_Ref_Wall_details.dgn
PATRICK ENGINEERING INC.
 LISLE, ILLINOIS