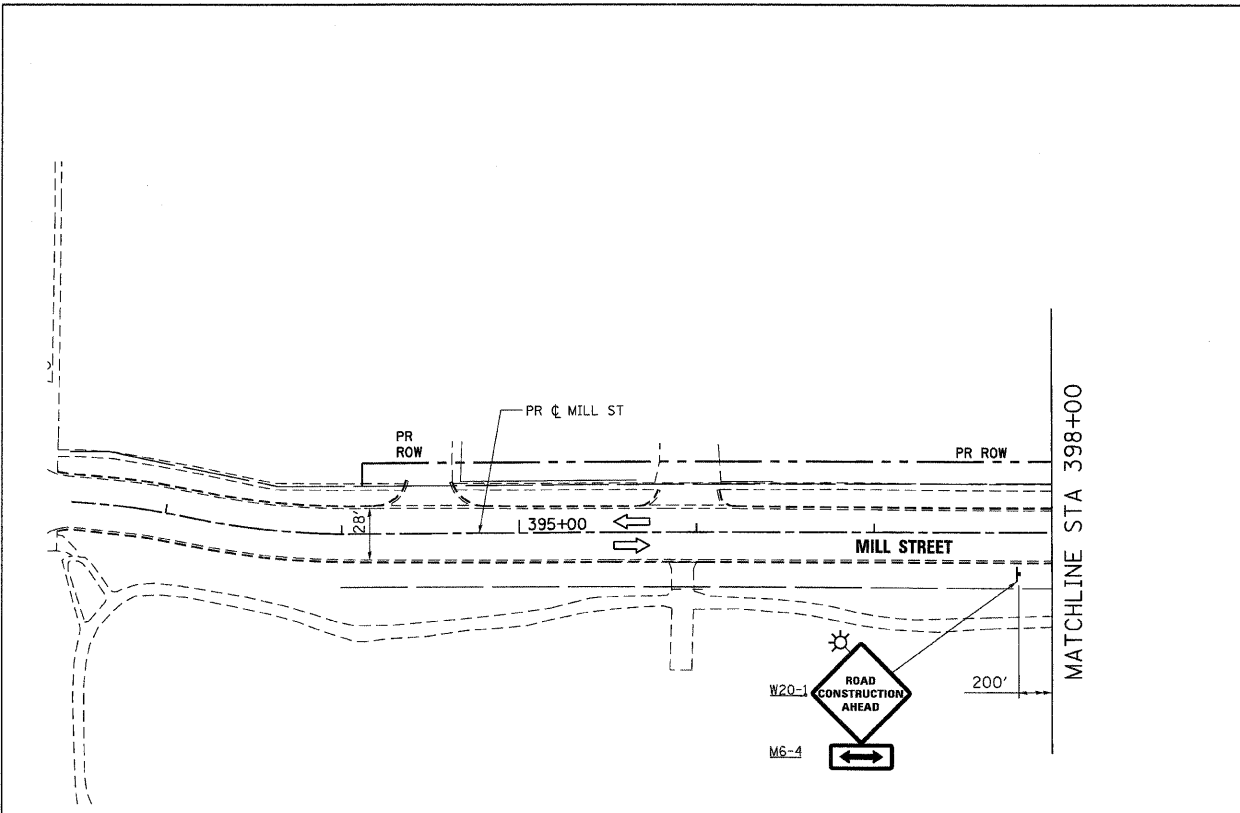
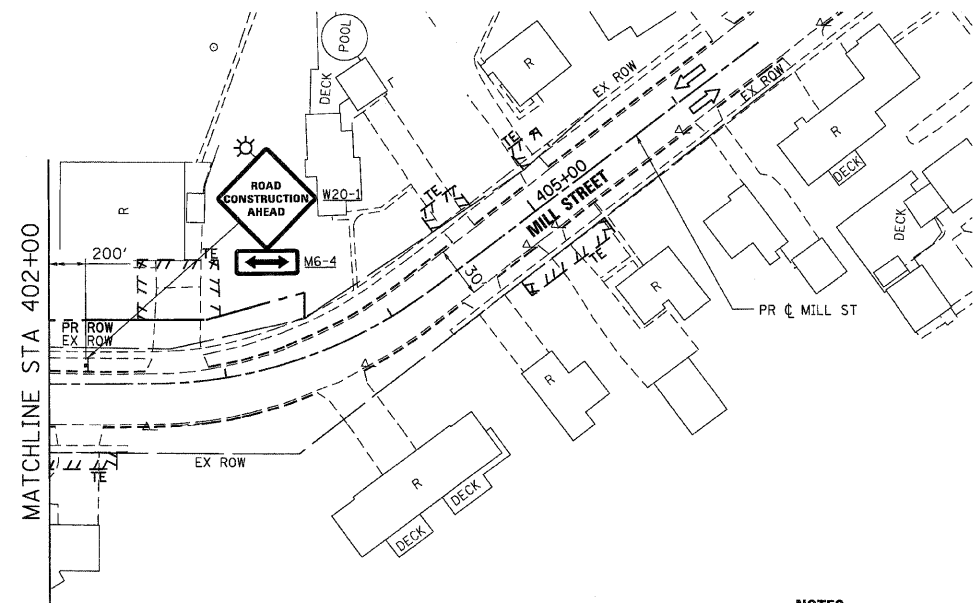


F.A.P. RTE.	SECTION	COUNTY	TOTAL SHEETS	SHEET NO.
326	*	McHENRY	502	63
STA. 9+35.22		TO STA. 142+08.53		
FED. ROAD DIST. NO.		ILLINOIS	FED. AID PROJECT	
* (105X & 106) WRS-2				



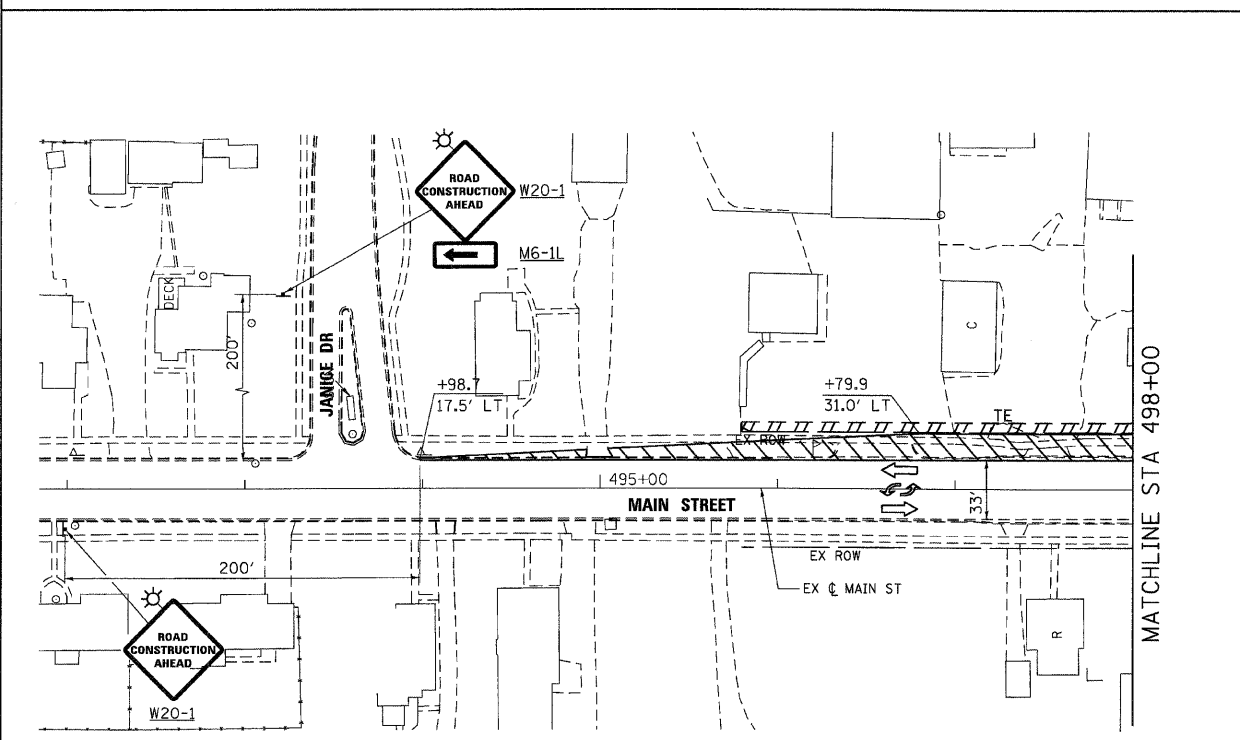
SEE MOT - PRE-STAGE SHEET 3 OF 8 FOR CONTINUATION

MILL STREET



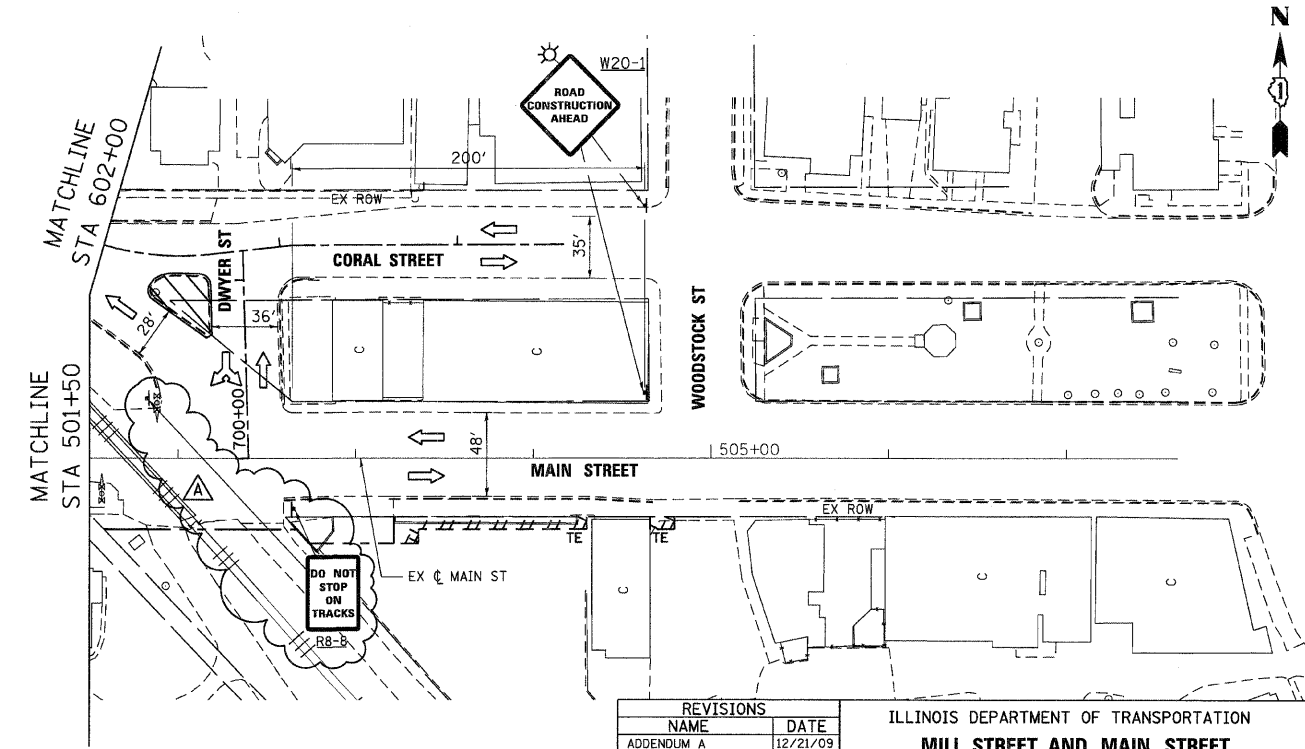
NOTES:

1. ALL EXISTING PAVEMENT MARKINGS SHALL REMAIN IN PLACE.
2. MAINTENANCE OF TRAFFIC IN AREAS OF TEMPORARY PAVEMENT WIDENING AT THE OUTSIDE EDGES OF PAVEMENT SHALL BE IN ACCORDANCE WITH 100T STANDARD 701326.



SEE MOT - PRE-STAGE SHEET 3 OF 8 FOR CONTINUATION

MAIN STREET



REVISIONS	
NAME	DATE
ADDENDUM A	12/21/09

ILLINOIS DEPARTMENT OF TRANSPORTATION
MILL STREET AND MAIN STREET
 MAINTENANCE OF TRAFFIC - PRE-STAGE
 SHEET 4 OF 8



SCALE: VERT. 1"=50'
 HORIZ. DATE: 8/5/2009
 DRAWN BY: E.D.
 CHECKED BY: A.A.C.

PLOT DATE = Thursday, December 17, 2009
 FILE NAME = S:\11-CADD\01-shs\B63.mot_pre-stg\shs4.dgn
 PLOT SCALE = 50%
 USER NAME = jbr