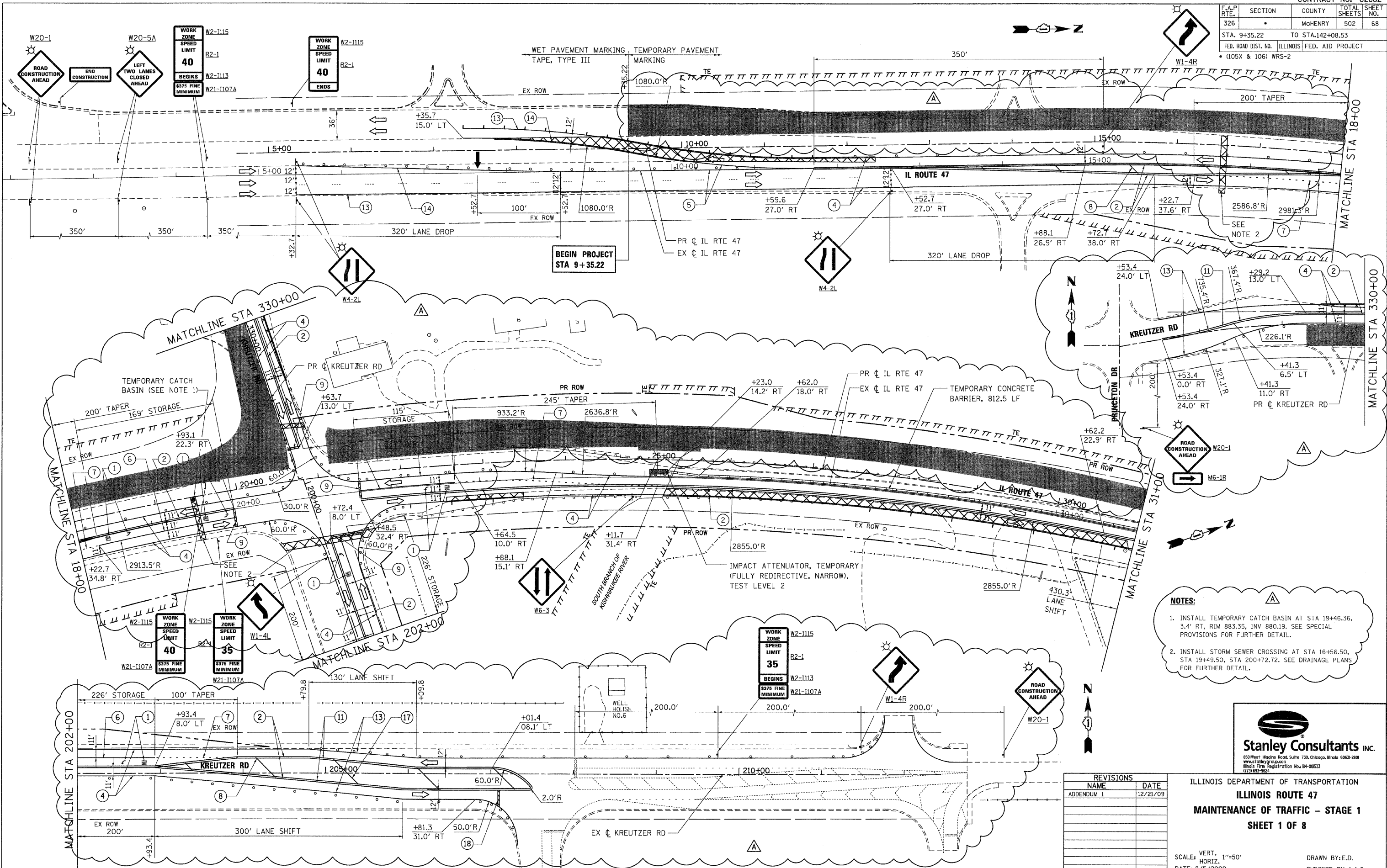


F.A.P. RTE.	SECTION	COUNTY	TOTAL SHEETS	SHEET NO.
326		MCHEMRY	502	68
STA. 9+35.22		TO STA. 142+08.53		
FED. ROAD DIST. NO.		ILLINOIS FED. AID PROJECT		
		• (105X & 106) WRS-2		



WORK ZONE SPEED LIMIT 40 BEGINS W2-1115 W2-1113 W2-1107A

WORK ZONE SPEED LIMIT 40 ENDS W2-1115 W2-1113 W2-1107A

BEGIN PROJECT STA 9+35.22

WORK ZONE SPEED LIMIT 35 BEGINS W2-1115 W2-1113 W2-1107A

- NOTES:**
- INSTALL TEMPORARY CATCH BASIN AT STA 19+46.36, 3.4' RT, RIM 883.35, INV 880.19. SEE SPECIAL PROVISIONS FOR FURTHER DETAIL.
  - INSTALL STORM SEWER CROSSING AT STA 16+56.50, STA 19+49.50, STA 200+72.72. SEE DRAINAGE PLANS FOR FURTHER DETAIL.



REVISIONS	
NAME	DATE
ADDENDUM 1	12/21/09

ILLINOIS DEPARTMENT OF TRANSPORTATION  
**ILLINOIS ROUTE 47**  
**MAINTENANCE OF TRAFFIC - STAGE 1**  
**SHEET 1 OF 8**

SCALE: VERT. 1"=50'  
HORIZ. 1"=100'  
DATE: 8/5/2009  
DRAWN BY: E.D.  
CHECKED BY: A.A.C.

PLOT DATE = Thursday, December 17, 2009  
FILE NAME = S:\11-CADD\01-INT\62882.mxd  
PLOT SCALE = 50%  
USER NAME = jsh