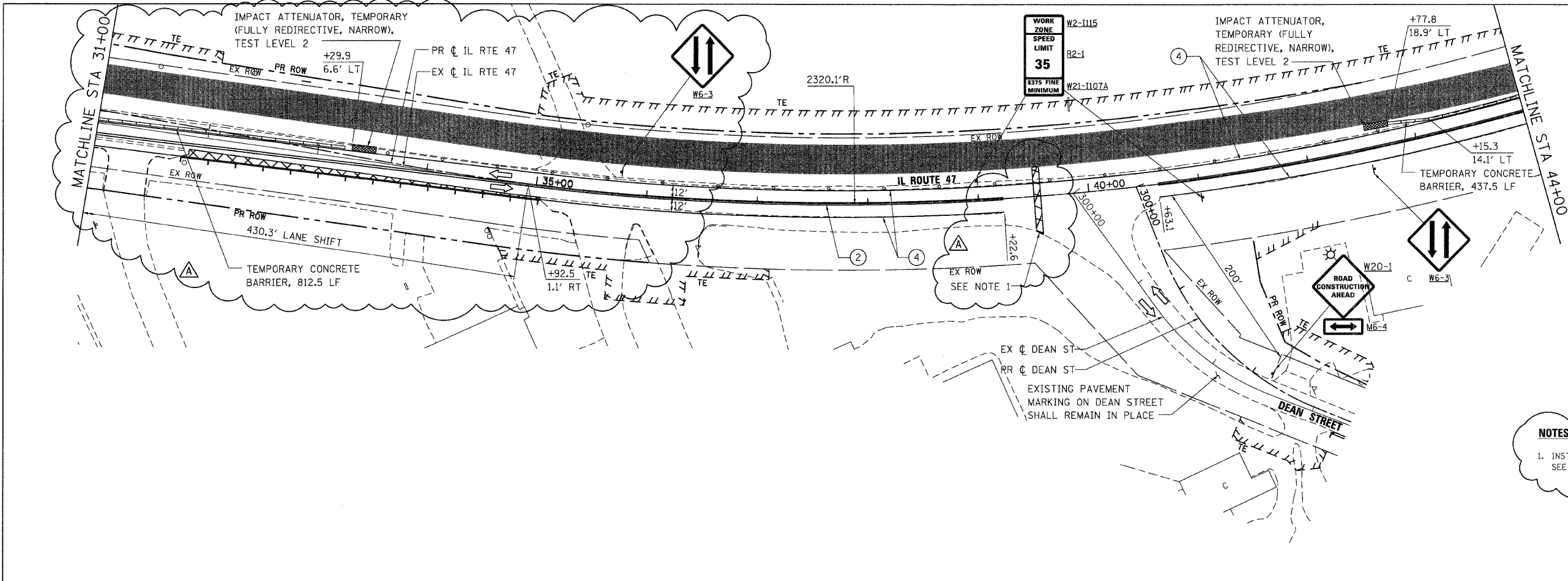
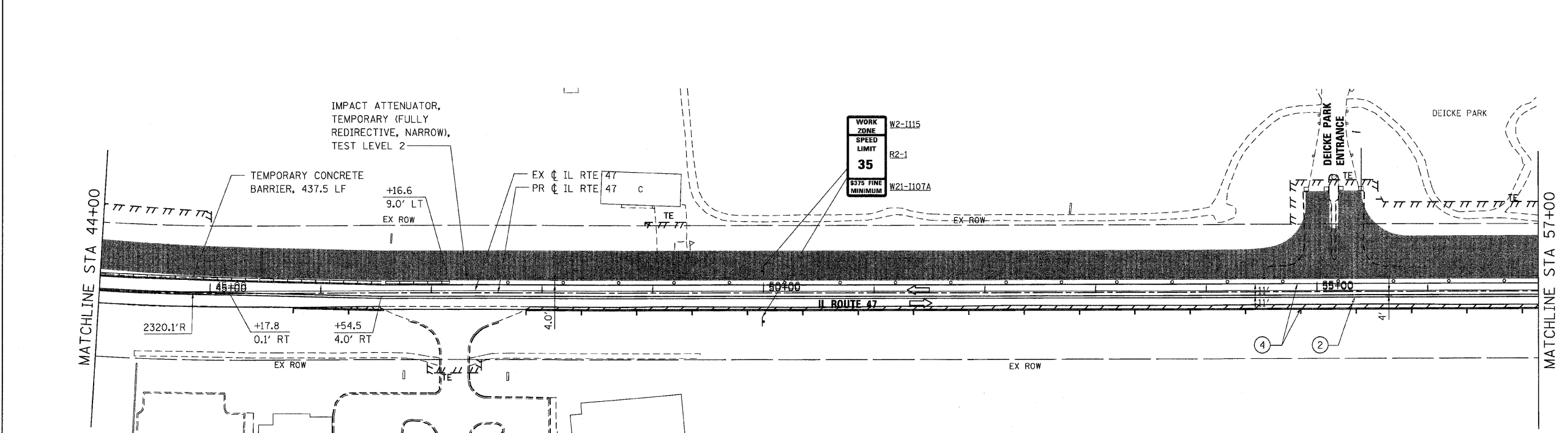


F.A.P. RTE.	SECTION	COUNTY	TOTAL SHEETS	SHEET NO.
326		McHENRY	502	69
STA. 9+35.22		TO STA. 142+08.53		
FED. ROAD DIST. NO.		ILLINOIS FED. AID PROJECT		
• (105X & 106) WRS-2				



NOTES:

1. INSTALL PROPOSED CULVERT AT STA 39+53.33. SEE DRAINAGE PLANS FOR FURTHER DETAIL.



REVISIONS	
NAME	DATE
ADDENDUM A	12/21/09

ILLINOIS DEPARTMENT OF TRANSPORTATION
ILLINOIS ROUTE 47
MAINTENANCE OF TRAFFIC – STAGE 1
SHEET 2 OF 8

SCALE: VERT. 1"=50'
 HORIZ. 1"=50'
 DATE: 8/5/2009

DRAWN BY: E.D.
 CHECKED BY: A.A.C.

PLOT DATE = Thursday, December 17, 2009
 FILE NAME = S:\11-CADD\01-INT\110691.mxd
 PLOT SCALE = 50%
 USER NAME = 3878