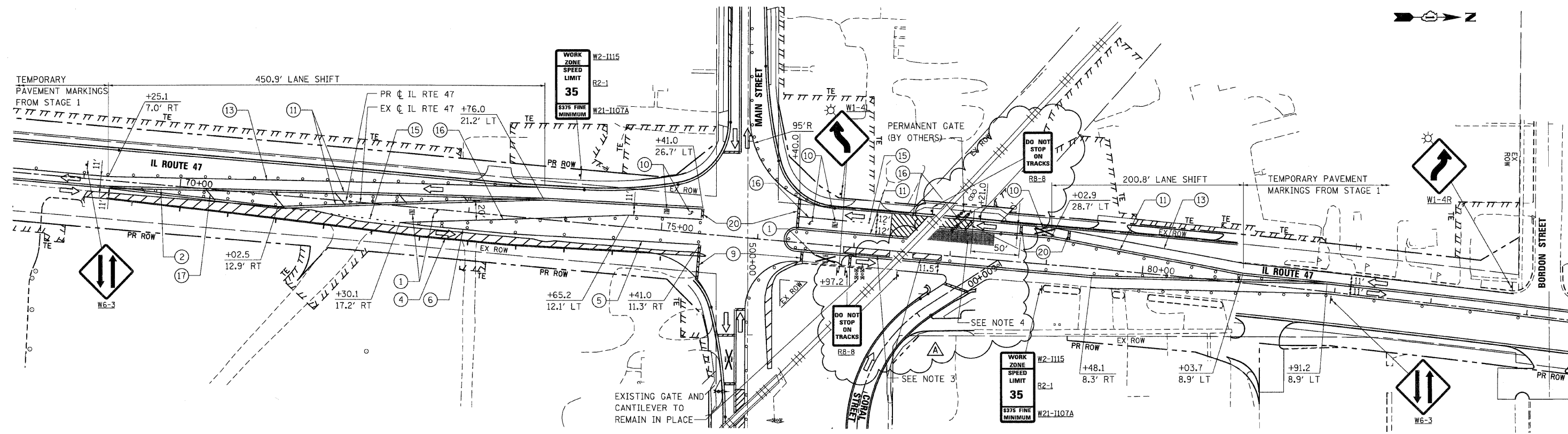


F.A.P. RTE.	SECTION	COUNTY	TOTAL SHEETS	SHEET NO.
326		McHENRY	502	80
STA. 9+35.22		TO STA.142+08.53		
FED. ROAD DIST. NO.		ILLINOIS FED. AID PROJECT		
• (105X & 106) WRS-2				



- NOTES:**
- TEMPORARY PAVEMENT MARKING FROM STAGE 1 ALONG IL RTE 47 SHALL REMAIN IN PLACE. SEE MOT - STAGE 1 SHEET 3 OF 8 FOR ADDITIONAL INFORMATION.
 - PAVEMENT MARKING TAPE FROM STAGE 1B ALONG MAIN STREET SHALL REMAIN IN PLACE. SEE MOT STAGE 1B SHEET 1 OF 4 FOR ADDITIONAL INFORMATION.
 - LONGITUDINAL CHANNELIZERS TO REMAIN IN PLACE FROM STAGE 1.
 - PAVEMENT CONSTRUCTED DURING THIS STAGE SHALL BE HIGH-EARLY-STRENGTH PORTLAND CEMENT CONCRETE PAVEMENT. A

PLOT DATE = Thursday, December 17, 2009
 FILE NAME = S:\N1-6000\01-INT\0288.mot.stg.01.dgn
 PLOT SCALE = 5/8"=1'
 USER NAME = 3698

REVISIONS	
NAME	DATE
ADDENDUM A	12/21/09

ILLINOIS DEPARTMENT OF TRANSPORTATION
IL RTE 47 AT MAIN STREET
MAINTENANCE OF TRAFFIC - STAGE 1C
SHEET 1 OF 1

SCALE: VERT. 1"=50'
 HORIZ. 1"=50'
 DATE: 8/5/2009

DRAWN BY: E.D.
 CHECKED BY: A.A.C.