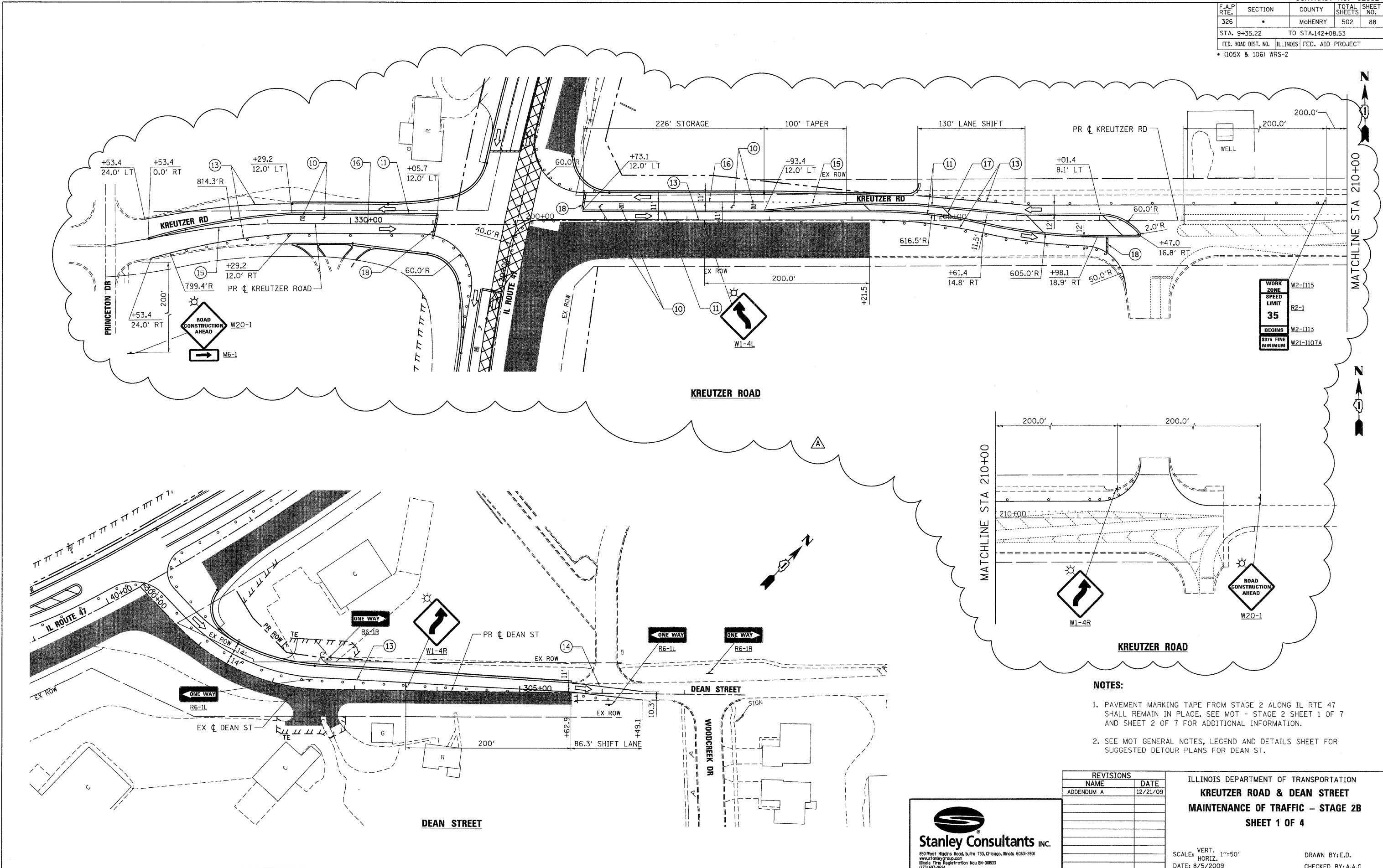
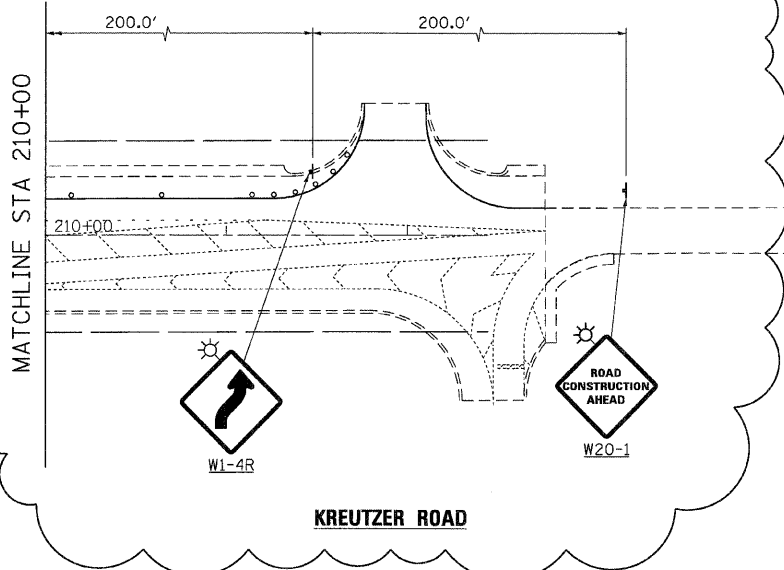


F.A.P. RTE.	SECTION	COUNTY	TOTAL SHEETS	SHEET NO.
326	*	MCHEMRY	502	88
STA. 9+35.22		TO STA.142+08.53		
FED. ROAD DIST. NO.		ILLINOIS FED. AID PROJECT		
* (105X & 106) WRS-2				



WORK ZONE	W2-1115
SPEED LIMIT	R2-1
BEGINS	W2-1113
3375 FINE MINIMUM	W2-1107A



- NOTES:**
1. PAVEMENT MARKING TAPE FROM STAGE 2 ALONG IL RTE 47 SHALL REMAIN IN PLACE. SEE MOT - STAGE 2 SHEET 1 OF 7 AND SHEET 2 OF 7 FOR ADDITIONAL INFORMATION.
 2. SEE MOT GENERAL NOTES, LEGEND AND DETAILS SHEET FOR SUGGESTED DETOUR PLANS FOR DEAN ST.

REVISIONS	
NAME	DATE
ADDENDUM A	12/21/09

ILLINOIS DEPARTMENT OF TRANSPORTATION
KREUTZER ROAD & DEAN STREET
MAINTENANCE OF TRAFFIC - STAGE 2B
SHEET 1 OF 4

Stanley Consultants INC.
 850 West Higgins Road, Suite 730, Chicago, Illinois 60631-2801
 www.stanleyconsultants.com
 Illinois Firm Registration No. 04-00633
 (773) 631-2624

SCALE: VERT. 1"=50'
 HORIZ. DATE: 8/5/2009
 DRAWN BY: E.D.
 CHECKED BY: A.A.C.

PLOT DATE = Thursday, December 17, 2009
 FILE NAME = S:\11-CADD\01-hrt\9889.mxd.a2b.dwg
 PLOT SCALE = 5/8"=1'
 USER NAME = 3579