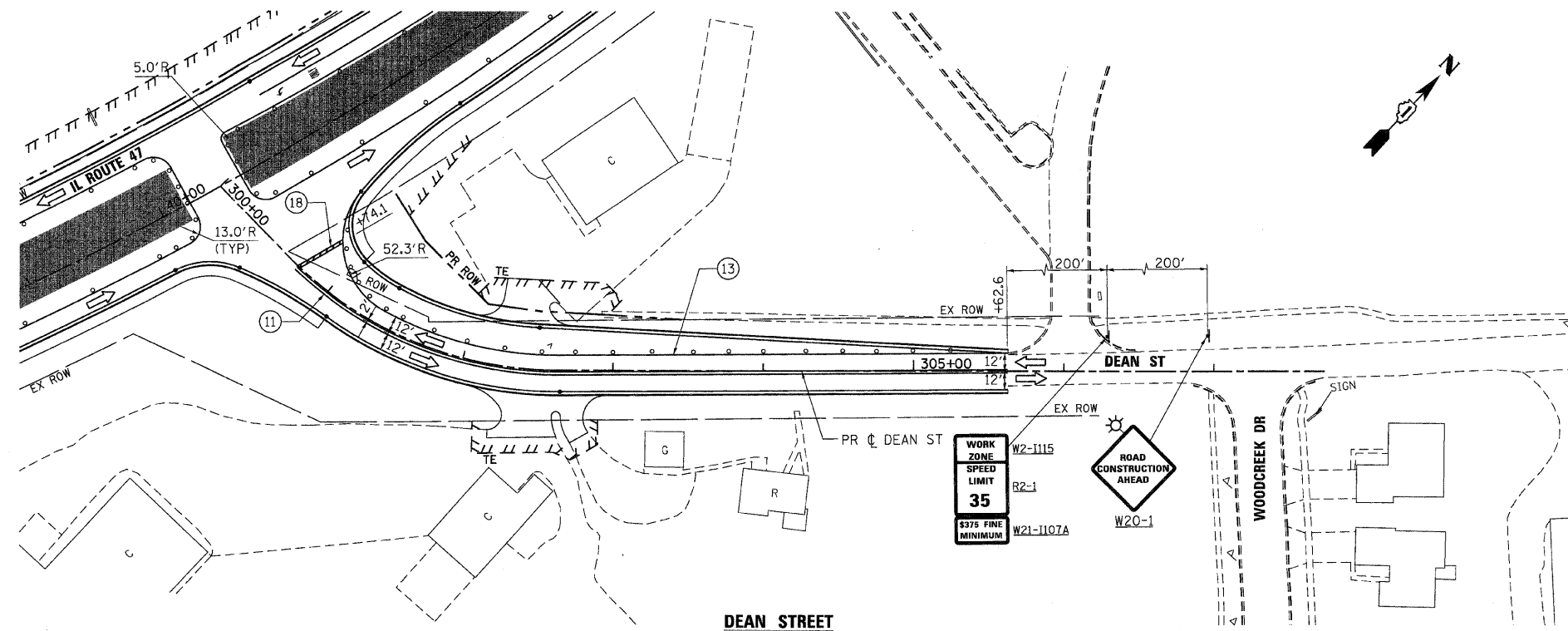
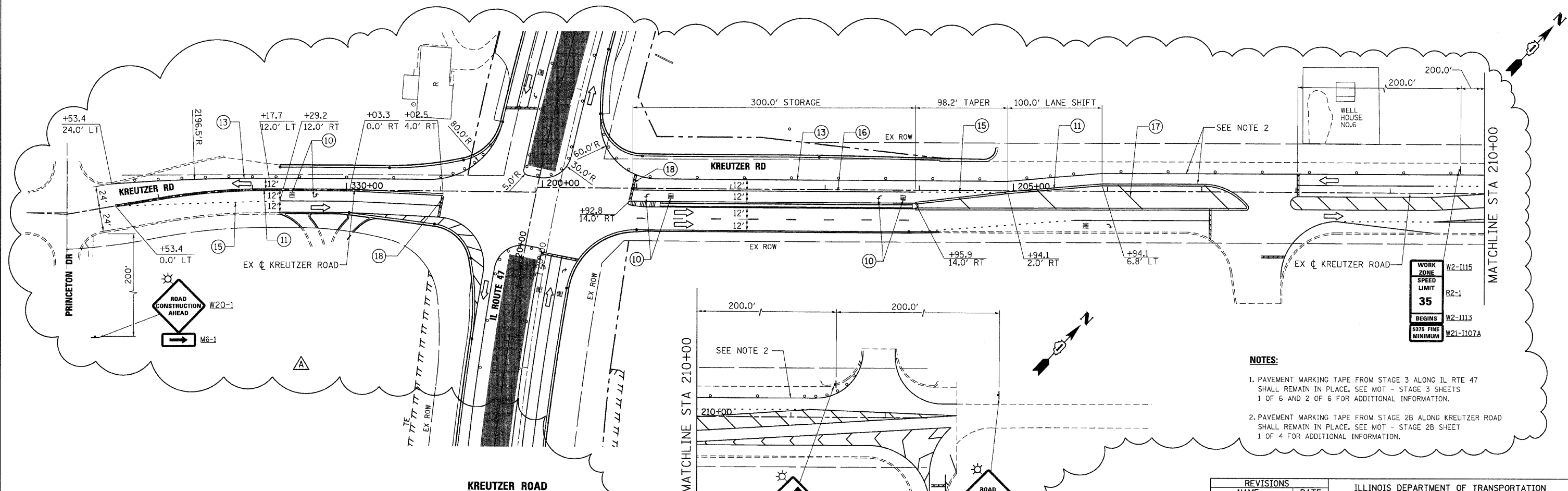


F.A.P. RTE.	SECTION	COUNTY	TOTAL SHEETS	SHEET NO.
326	*	McHENRY	502	104
STA. 9+35.22		TO STA.142+08.53		
FED. ROAD DIST. NO.		ILLINOIS FED. AID PROJECT		
* (105X & 106) WRS-2				



DEAN STREET



KREUTZER ROAD

NOTES:

1. PAVEMENT MARKING TAPE FROM STAGE 3 ALONG IL RTE 47 SHALL REMAIN IN PLACE. SEE MOT - STAGE 3 SHEETS 1 OF 6 AND 2 OF 6 FOR ADDITIONAL INFORMATION.
2. PAVEMENT MARKING TAPE FROM STAGE 2B ALONG KREUTZER ROAD SHALL REMAIN IN PLACE. SEE MOT - STAGE 2B SHEET 1 OF 4 FOR ADDITIONAL INFORMATION.

REVISIONS	
NAME	DATE
ADDENDUM A	12/21/09

ILLINOIS DEPARTMENT OF TRANSPORTATION
ILLINOIS ROUTE 47
MAINTENANCE OF TRAFFIC - STAGE 3C
DEAN STREET AND KREUTZER ROAD
SHEET 1 OF 4

SCALE: VERT. 1"=50'
 HORIZ. 1"=50'
 DATE: 8/5/2009

DRAWN BY: E.D.
 CHECKED BY: A.A.C.

Stanley Consultants INC.
 850 West Higgins Road, Suite 730, Chicago, Illinois 60631-2800
 www.stanleygroup.com
 Illinois Firm Registration No. 04-00533
 (773) 593-5624

PLOT DATE = Thursday, December 17, 2009
 FILE NAME = S:\11-CADD\81-mt\104-mt-st3c.dwg
 PLOT SCALE = 50%
 USER NAME = 3891