

# STATE OF ILLINOIS DEPARTMENT OF TRANSPORTATION DIVISION OF HIGHWAYS PLANS FOR PROPOSED HIGHWAY

## IL ROUTE 47 (FAP 326) FROM KREUTZER ROAD TO REED ROAD SECTION: (105X & 106) WRS-2

### PROJECT: ACNHF-HPP-1099 (002) ROADWAY RECONSTRUCTION AND TRAFFIC SIGNAL MODERNIZATION KANE AND McHENRY COUNTY C-91-071-05

FOR INDEX OF SHEETS, SEE SHEET NO. 2

**PROJECT LOCATED IN:**  
VILLAGE OF HUNTLEY

**TRAFFIC DATA:**

ADT: ILLINOIS ROUTE 47  
19,000 VEHICLES PER DAY (2005)  
37,000 VEHICLES PER DAY (2030)

POSTED SPEED: 35-45 MPH

ADT: MAIN STREET  
8,800 VEHICLES PER DAY (2009)  
ALGONQUIN ROAD  
9,300 VEHICLES PER DAY (2009)  
REED ROAD  
5,600 VEHICLES PER DAY (2009)

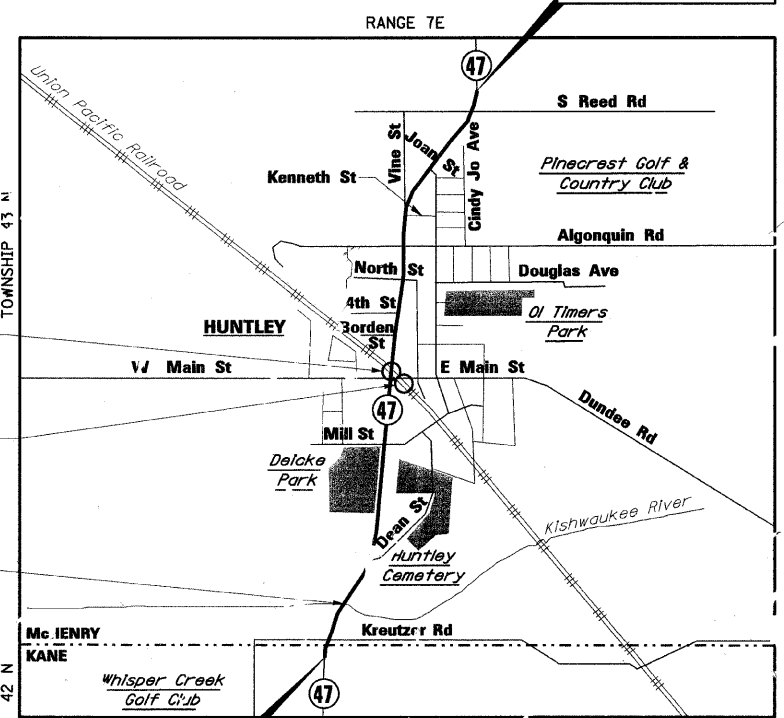
**DESIGN DESIGNATION:**

ILLINOIS RTE 47 3700 (30) - STRATEGIC REGIONAL ARTERIAL 11.77 (PCC-20)

WORK TO BE DONE BY UNION PACIFIC RAILROAD COMPANY  
STA 77+35.98 TO STA 77+56.70 (NB)  
STA 77+54.43 TO STA 77+74.98 (SB)

WORK TO BE DONE BY UNION PACIFIC RAILROAD COMPANY  
STA 501+62.70 TO STA 501+84.62 (WB)  
STA 501+73.63 TO STA 501+95.55 (EB)

STA 25+24.62  
SN: 056-0085  
IL 47 OVER SOUTH BRANCH  
OF KISHWAUKEE RIVER  
TRIPLE 10'X8' BOX CULVERT



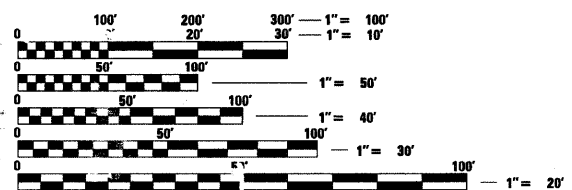
ILL RTE 47  
PROJECT BEGINS  
STA 9+35.22

ILL RTE 47  
PROJECT ENDS  
STA 142+08.53

**LOCATION PLAN**

MAP SCALE: 1" = 0.5 MILE

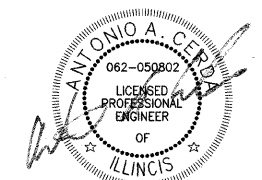
GROSS LENGTH OF PROJECT: 13,273.31 FEET (2.51 MILES)  
NET LENGTH OF PROJECT: 13,232.31 FEET (2.51 MILES)



FULL SIZE PLANS HAVE BEEN PREPARED USING STANDARD ENGINEERING SCALES. REDUCED SIZED PLANS WILL NOT CONFORM TO STANDARD SCALES. IN MAKING MEASUREMENTS ON REDUCED PLANS, THE ABOVE SCALES MAY BE USED.

J.U.L.I.E.  
JOINT UTILITY LOCATION INFORMATION FOR EXCAVATION  
1-800-892-0123

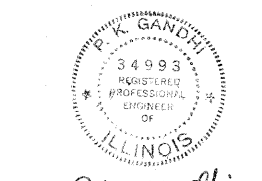
CONTRACT NO. 62882



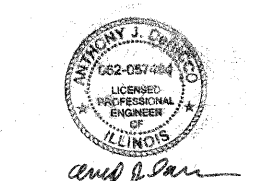
EXPIRATION DATE: 11-30-09  
DATE: 8/5/2009  
SHEETS 1-267, 362-501



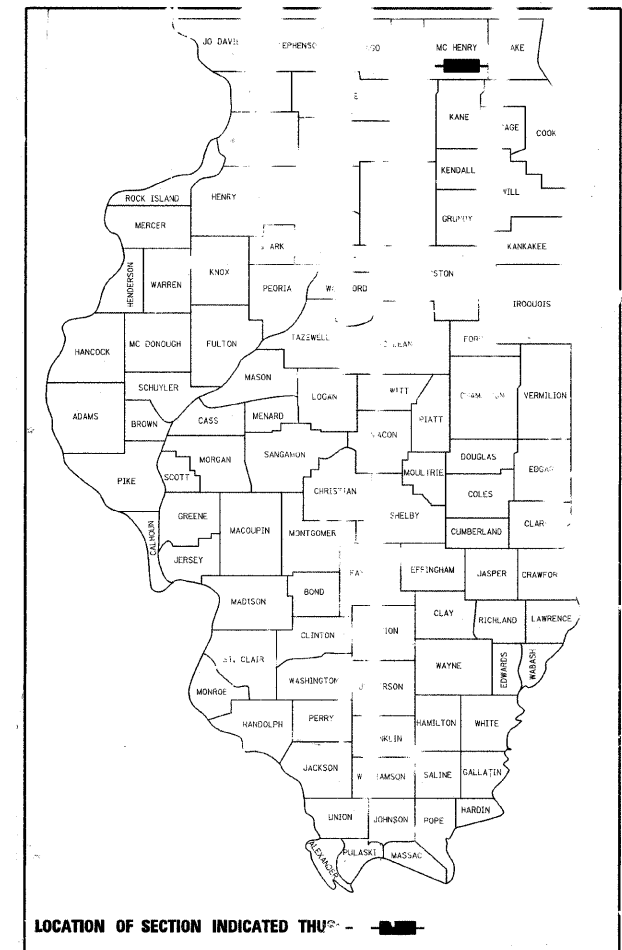
EXPIRATION DATE: 11-30-10  
DATE: 8/5/2009  
SHEETS 324-361



EXPIRATION DATE: 11-30-09  
DATE: 8-5-09  
SHEETS 268-316



EXPIRATION DATE: 11-30-09  
DATE: 8-5-09  
SHEETS 317-323



STATE OF ILLINOIS  
DEPARTMENT OF TRANSPORTATION  
DIVISION OF HIGHWAYS

SUBMITTED: AUGUST 7, 2009

Debra P. O'Keefe  
DEPUTY DIRECTOR HIGHWAYS REGION ENGINEER

20

ENGINEER OF DESIGN AND ENVIRONMENT

20

DIRECTOR HIGHWAYS REGION ENGINEER

PRINTED BY THE AUTHORITY  
OF THE STATE OF ILLINOIS

BOOK 1 OF 2



DISTRICT ONE - DESIGN IDOT CONSULTANT PROJECT MANAGER: CATHERINE KIBBLE / BRIAN KUTTAB (847)705-4431