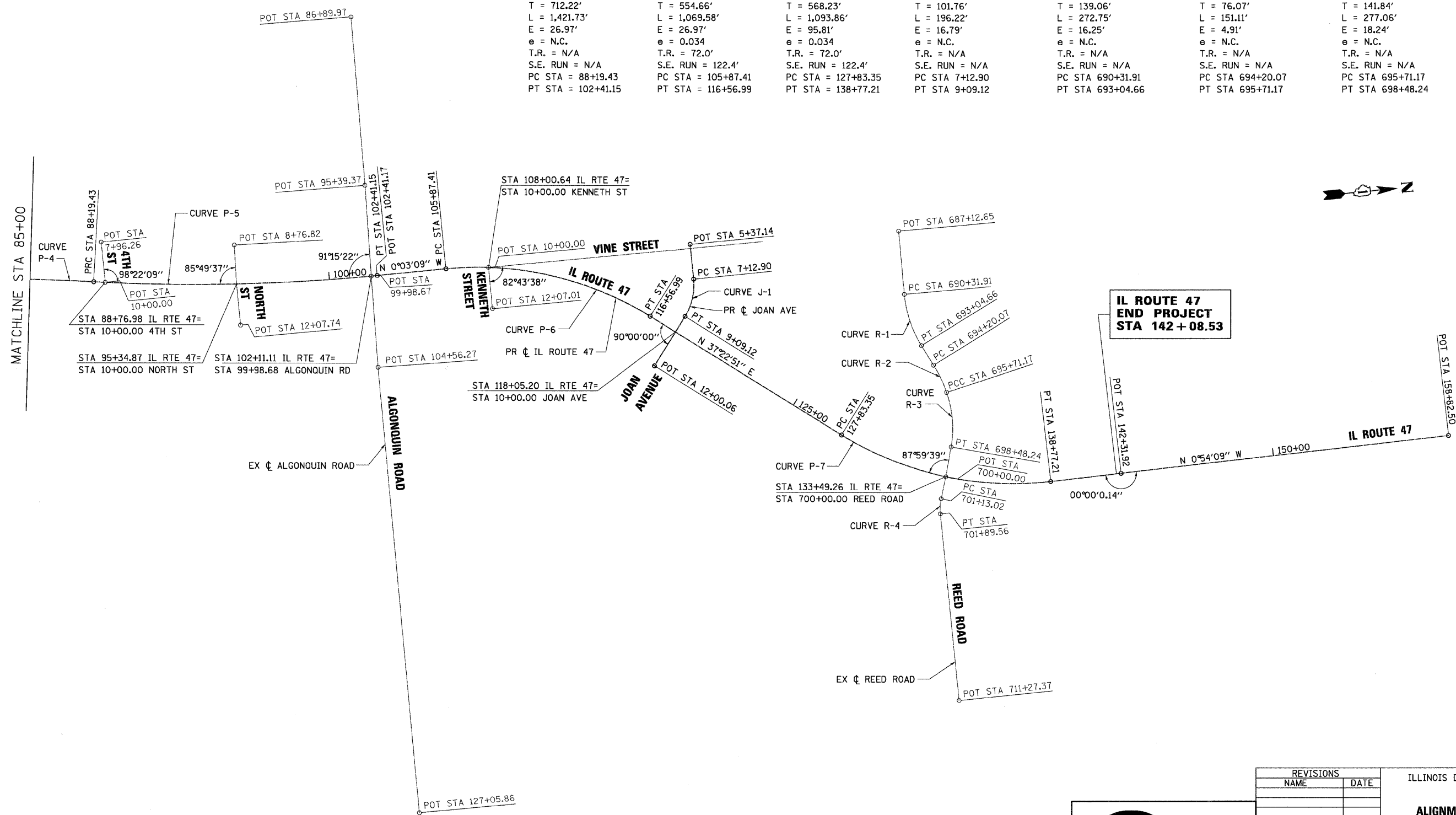


F.A.P. RTE.	SECTION	COUNTY	TOTAL SHEETS	SHEET NO.
326		McHENRY	502	26
STA. 9+35.22		TO STA.142+08.53		
FED. ROAD DIST. NO.		ILLINOIS	FED. AID PROJECT	

• (105X & 106) WRS-2

<p>PROP CURVE P-5 PI STA = 39+63.49 $\Delta = 8^\circ 40' 26''$ (LT) $D = 0^\circ 36' 36''$ $R = 9,391.24'$ $T = 712.22'$ $L = 1,421.73'$ $E = 26.97'$ $e = N.C.$ T.R. = N/A S.E. RUN = N/A PC STA = 88+19.43 PT STA = 102+41.15</p>	<p>PROP CURVE P-6 PI STA = 111+42.07 $\Delta = 37^\circ 26' 00''$ (RT) $D = 3^\circ 29' 59''$ $R = 1,637.10'$ $T = 554.66'$ $L = 1,069.58'$ $E = 26.97'$ $e = 0.034$ T.R. = 72.0' S.E. RUN = 122.4' PC STA = 105+87.41 PT STA = 116+56.99</p>	<p>PROP CURVE P-7 PI STA = 133+51.58 $\Delta = 38^\circ 17' 00''$ (LT) $D = 3^\circ 29' 59''$ $R = 1,637.10'$ $T = 568.23'$ $L = 1,093.86'$ $E = 95.81'$ $e = 0.034$ T.R. = 72.0' S.E. RUN = 122.4' PC STA = 127+83.35 PT STA = 138+77.21</p>	<p>CURVE J-1 PI STA 8+14.66 $\Delta = 37^\circ 28' 29''$ (RT) $D = 19^\circ 05' 55''$ $R = 300.00'$ $T = 101.76'$ $L = 196.22'$ $E = 16.79'$ $e = N.C.$ T.R. = N/A S.E. RUN = N/A PC STA 7+12.90 PT STA 9+09.12</p>	<p>CURVE R-1 PI STA 691+70.97 $\Delta = 26^\circ 39' 18''$ (LT) $D = 9^\circ 46' 21''$ $R = 587.00'$ $T = 139.06'$ $L = 272.75'$ $E = 16.25'$ $e = N.C.$ T.R. = N/A S.E. RUN = N/A PC STA 690+31.91 PT STA 693+04.66</p>	<p>CURVE R-2 PI STA 694+96.13 $\Delta = 14^\circ 46' 01''$ (RT) $D = 9^\circ 46' 21''$ $R = 587.00'$ $T = 76.07'$ $L = 151.11'$ $E = 4.91'$ $e = N.C.$ T.R. = N/A S.E. RUN = N/A PC STA 694+20.07 PT STA 695+71.17</p>	<p>CURVE R-3 PI STA 697+13.01 $\Delta = 29^\circ 18' 43''$ (RT) $D = 10^\circ 34' 46''$ $R = 542.35'$ $T = 141.84'$ $L = 277.06'$ $E = 18.24'$ $e = N.C.$ T.R. = N/A S.E. RUN = N/A PC STA 695+71.17 PT STA 698+48.24</p>	<p>CURVE R-4 PI STA 701+51.86 $\Delta = 17^\circ 39' 40''$ (LT) $D = 23^\circ 04' 26''$ $R = 250.00'$ $T = 38.84'$ $L = 76.54'$ $E = 3.00'$ $e = N.C.$ T.R. = N/A S.E. RUN = N/A PC STA 701+13.02 PT STA 701+89.56</p>
---	--	--	--	---	---	--	---



**IL ROUTE 47
 END PROJECT
 STA 142 + 08.53**

PLT DATE = Wednesday, August 05, 2009
 FILE NAME = S:\11-CADD\11-MA\11026.dwg
 PLOT SCALE = 2500
 USER NAME = 3838

REVISIONS	
NAME	DATE

ILLINOIS DEPARTMENT OF TRANSPORTATION
ILLINOIS ROUTE 47
ALIGNMENT, TIES AND BENCHMARKS
SHEET 2 OF 3

SCALE: VERT. 1"=250'
 HORIZ. DATE: 8/5/2009

DRAWN BY: E.D.
 CHECKED BY: A.A.C.