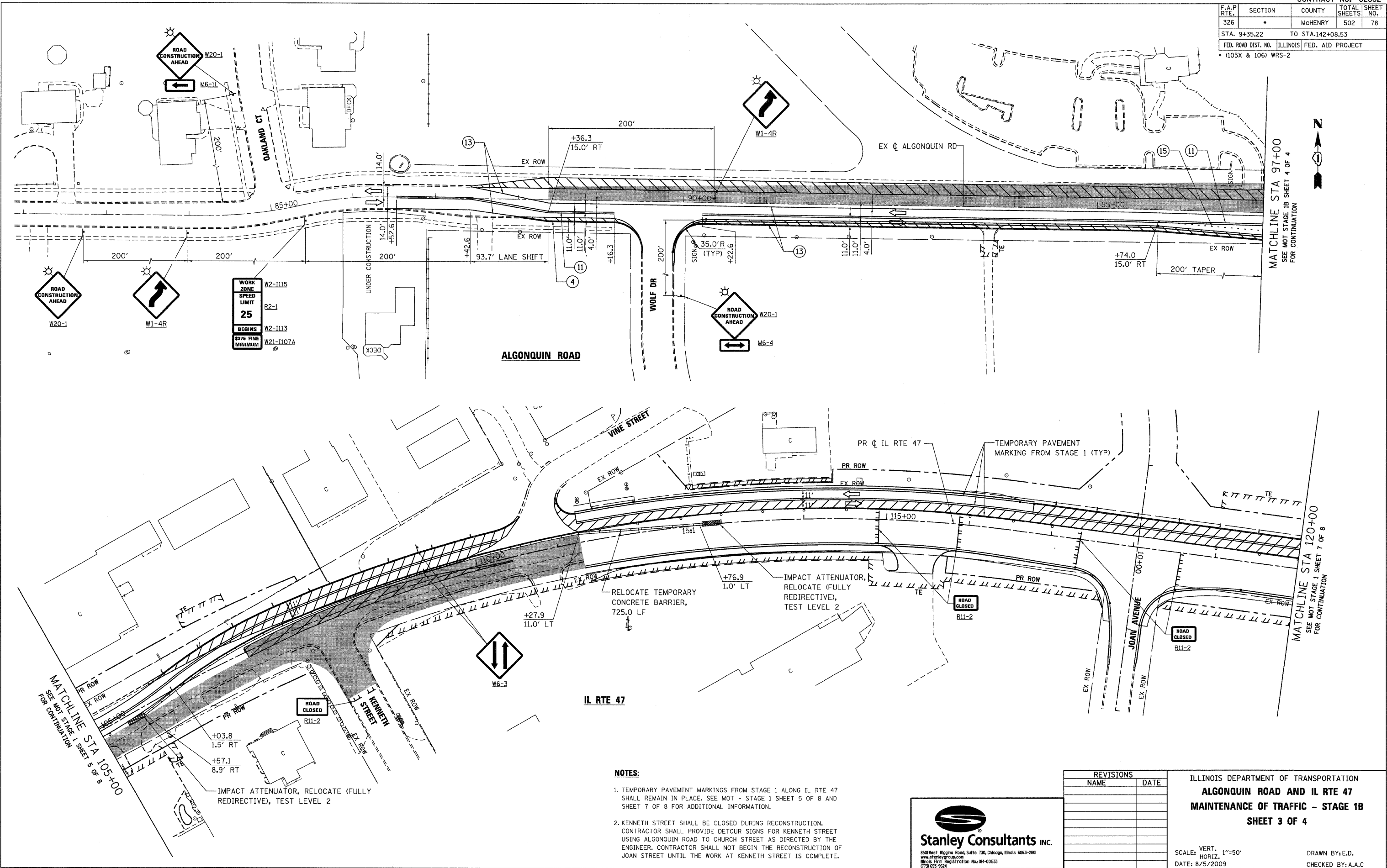


F.A.P. RTE.	SECTION	COUNTY	TOTAL SHEETS	SHEET NO.
326	*	McHENRY	502	78
STA. 9+35.22		TO STA. 142+08.53		
FED. ROAD DIST. NO.		ILLINOIS	FED. AID PROJECT	
* (105X & 106) WRS-2				



WORK ZONE	W2-1115
SPEED LIMIT	R2-1
25	
BEGINS	W2-1113
3375 FINE MINIMUM	W2-1107A

NOTES:

1. TEMPORARY PAVEMENT MARKINGS FROM STAGE 1 ALONG IL RTE 47 SHALL REMAIN IN PLACE. SEE MOT - STAGE 1 SHEET 5 OF 8 AND SHEET 7 OF 8 FOR ADDITIONAL INFORMATION.
2. KENNETH STREET SHALL BE CLOSED DURING RECONSTRUCTION. CONTRACTOR SHALL PROVIDE DETOUR SIGNS FOR KENNETH STREET USING ALGONQUIN ROAD TO CHURCH STREET AS DIRECTED BY THE ENGINEER. CONTRACTOR SHALL NOT BEGIN THE RECONSTRUCTION OF JOAN STREET UNTIL THE WORK AT KENNETH STREET IS COMPLETE.



REVISIONS	
NAME	DATE

ILLINOIS DEPARTMENT OF TRANSPORTATION
ALGONQUIN ROAD AND IL RTE 47
MAINTENANCE OF TRAFFIC - STAGE 1B
SHEET 3 OF 4

SCALE: VERT. 1"=50'
 HORIZ. 1"=100'
 DATE: 8/5/2009
 DRAWN BY: E.D.
 CHECKED BY: A.A.C.

PLOT DATE = Friday, August 07, 2009
 FILE NAME = S:\11-CADD\11-11\1178_mot.stb.dwg
 PLOT SCALE = 1/8"=1'-0"
 USER NAME = 3590