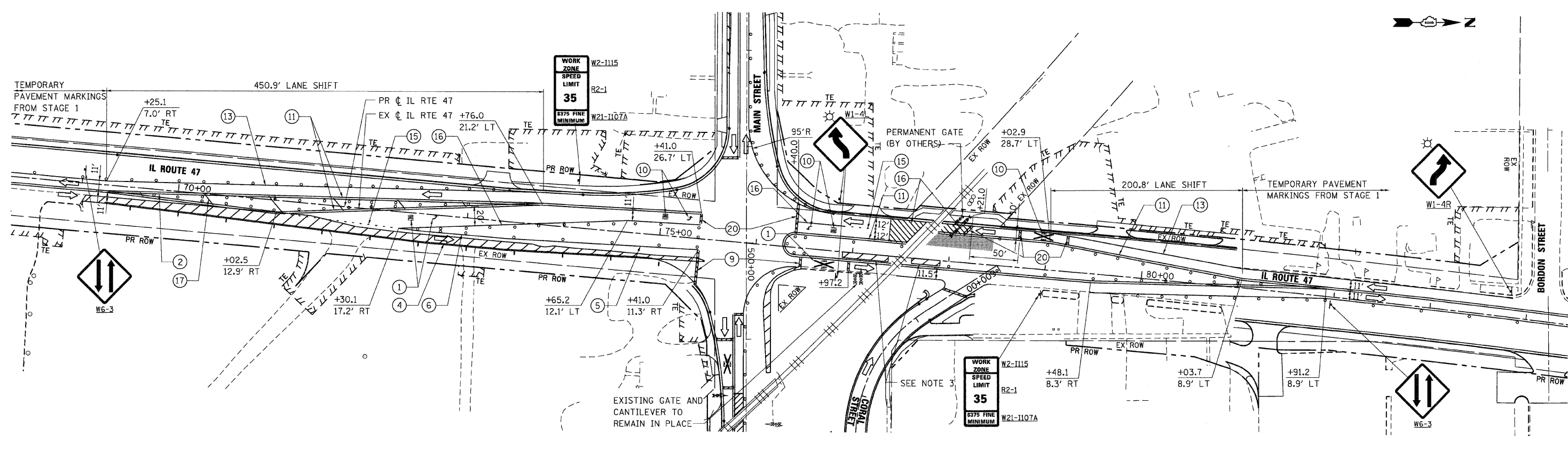


F.A.P. RTE.	SECTION	COUNTY	TOTAL SHEETS	SHEET NO.
326	*	McHENRY	502	80
STA. 9+35.22		TO STA. 142+08.53		
FED. ROAD DIST. NO.		ILLINOIS	FED. AID PROJECT	
* (105X & 106) WRS-2				



NOTES:

1. TEMPORARY PAVEMENT MARKING FROM STAGE 1 ALONG IL RTE 47 SHALL REMAIN IN PLACE. SEE MOT - STAGE 1 SHEET 3 OF 8 FOR ADDITIONAL INFORMATION.
2. PAVEMENT MARKING TAPE FROM STAGE 1B ALONG MAIN STREET SHALL REMAIN IN PLACE. SEE MOT STAGE 1B SHEET 1 OF 4 FOR ADDITIONAL INFORMATION.
3. LONGITUDINAL CHANNELIZERS TO REMAIN IN PLACE FROM STAGE 1.

REVISIONS	
NAME	DATE

ILLINOIS DEPARTMENT OF TRANSPORTATION
IL RTE 47 @ MAIN STREET
MAINTENANCE OF TRAFFIC - STAGE 1C
SHEET 1 OF 1

SCALE: VERT. 1"=50'
 HORIZ. 1"=100'
 DATE: 8/5/2009
 DRAWN BY: E.D.
 CHECKED BY: A.A.C.



PLOT DATE = Wednesday, August 05, 2009
 FILE NAME = S:\11-CADD\11-mh\110612_mct_s1c.dgn
 PLOT SCALE = 5/8"=1'
 USER NAME = 3839