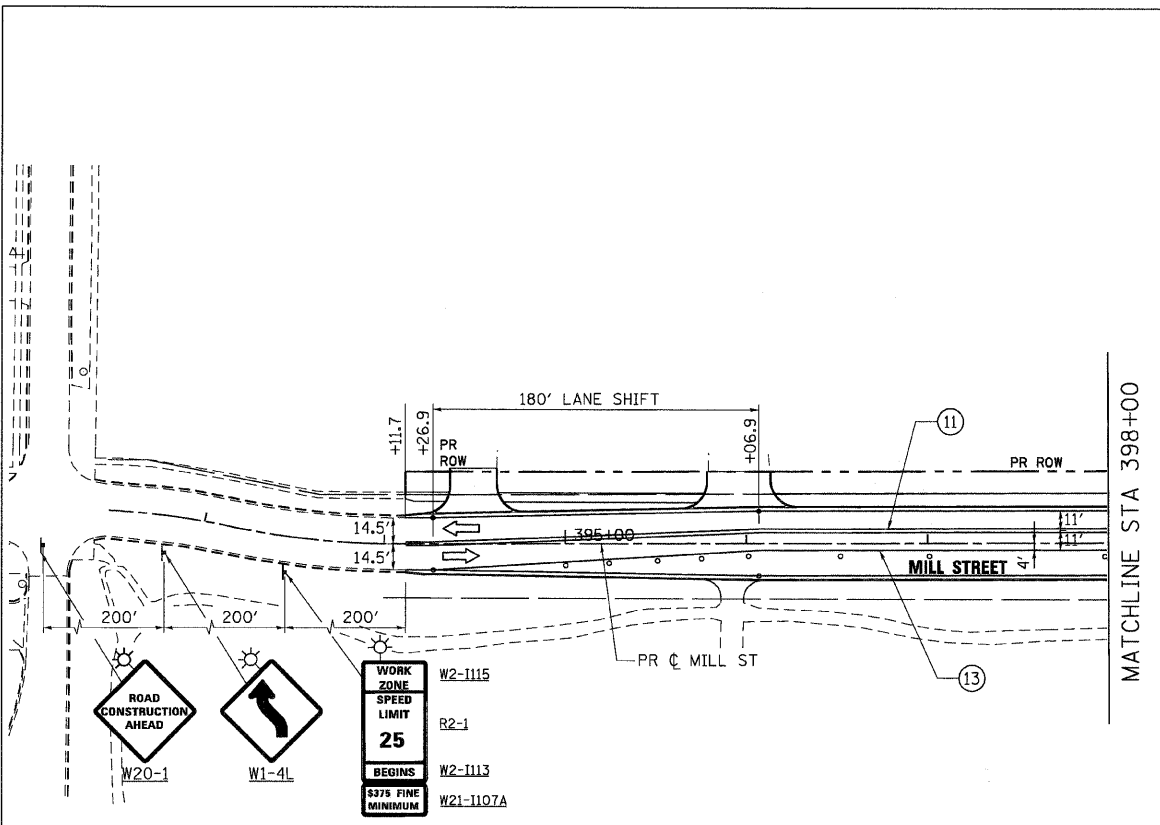
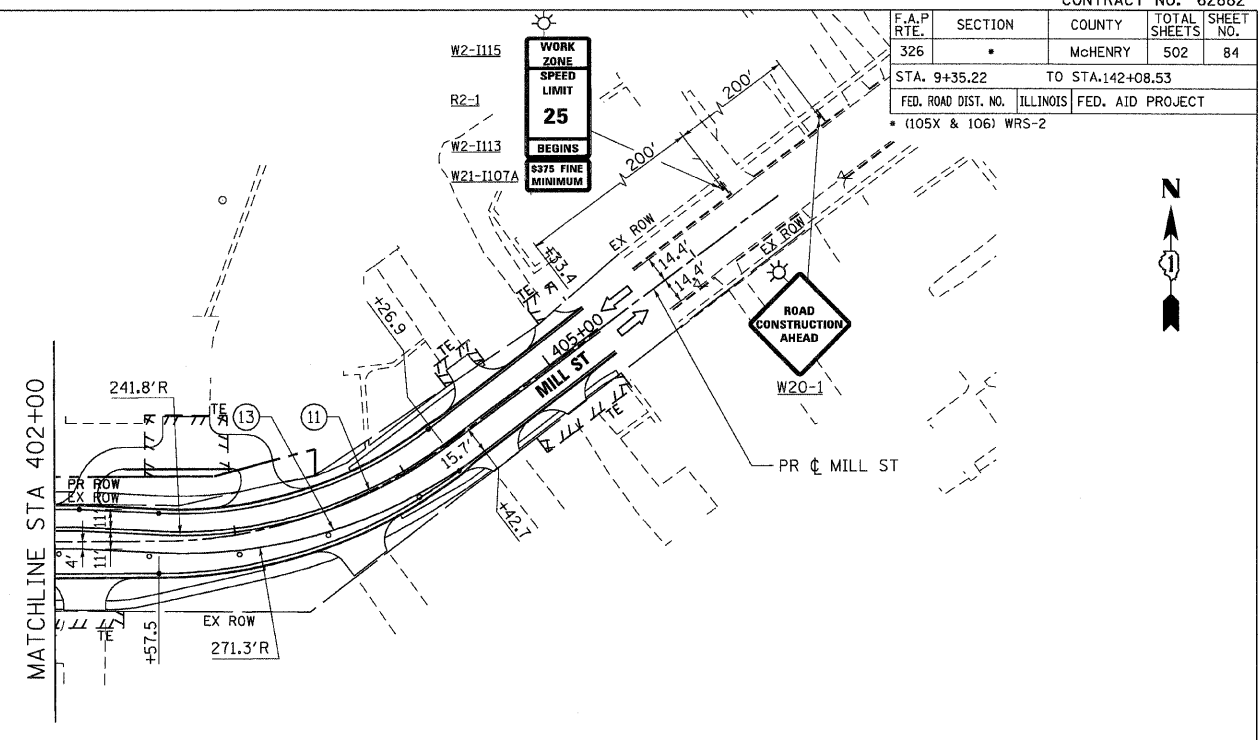


F.A.P. RTE.	SECTION	COUNTY	TOTAL SHEETS	SHEET NO.
326		McHENRY	502	84
STA. 9+35.22		TO STA. 142+08.53		
FED. ROAD DIST. NO.		ILLINOIS	FED. AID PROJECT	
• (105X & 106) WRS-2				

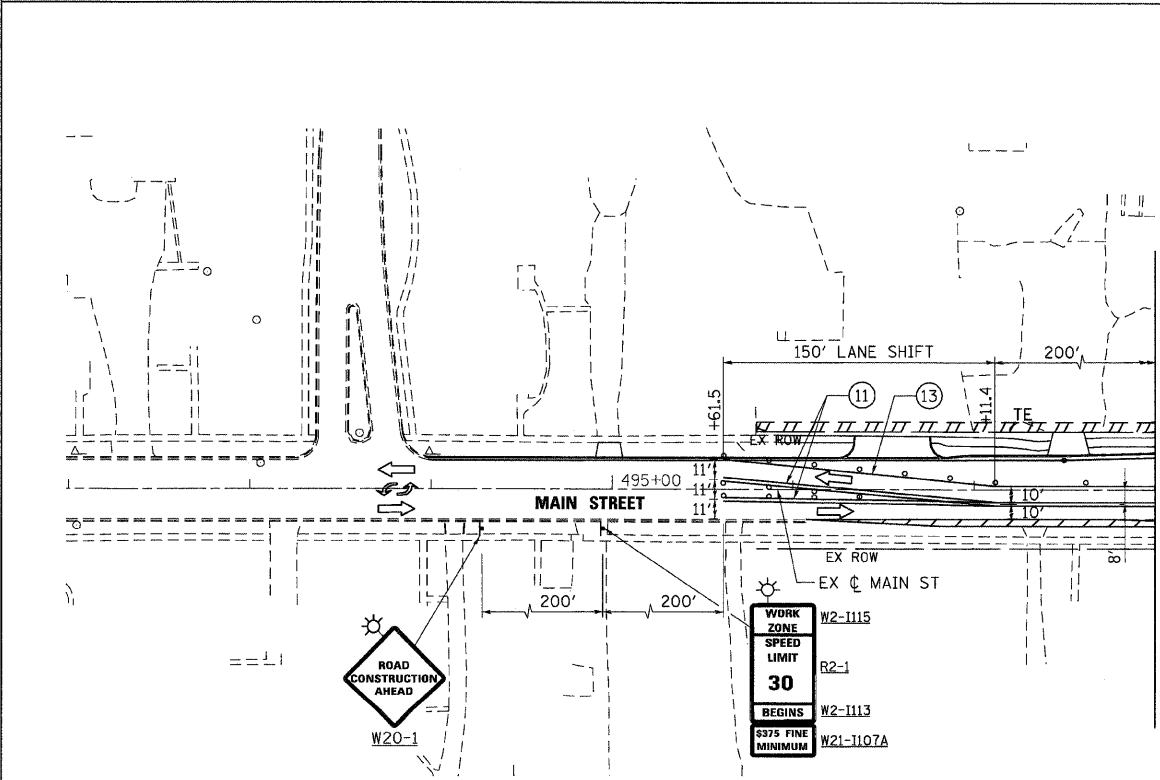


SEE MOT - STAGE 3  
SHEET 3 OF 7  
FOR CONTINUATION

**MILL STREET**

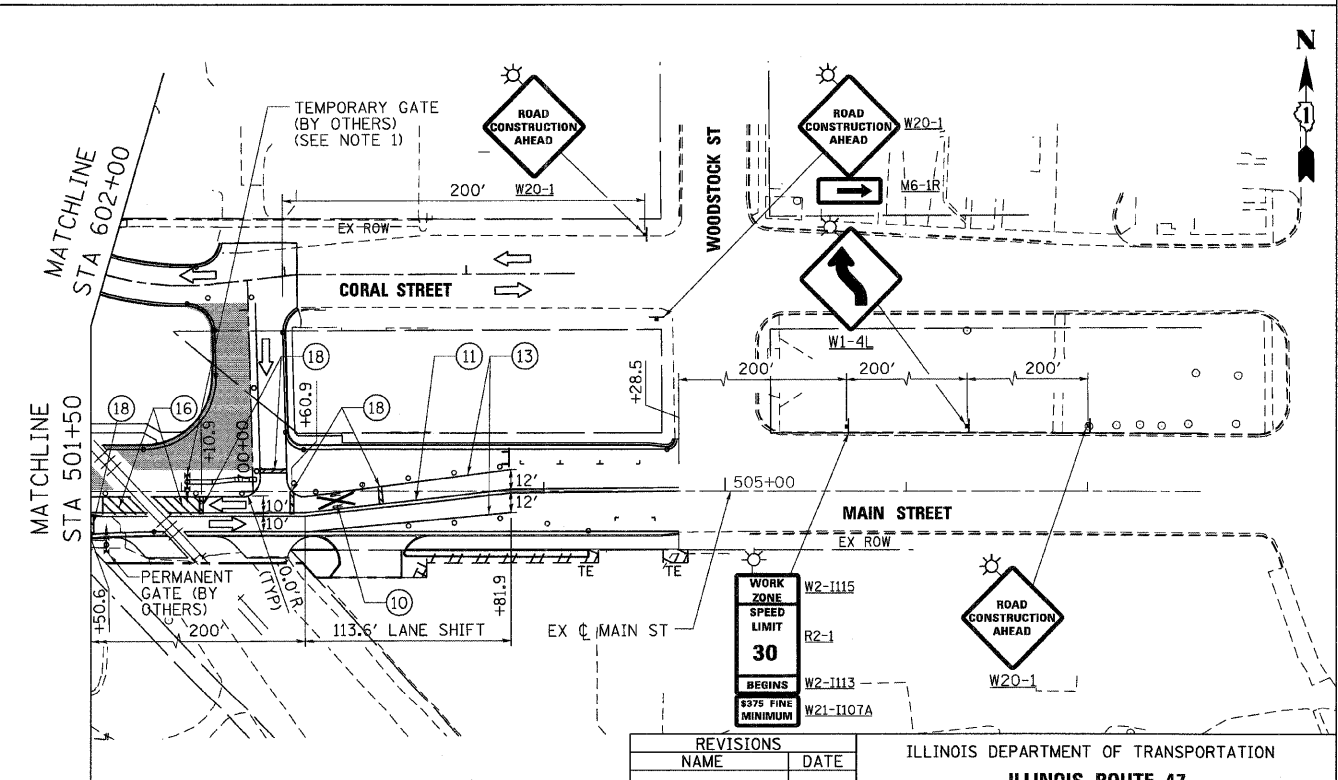


**NOTES:**  
1. SEE TEMPORARY RAILROAD CROSSING GATE DETAIL ON MOT DETAIL SHEET FOR ADDITIONAL INFORMATION.



SEE MOT - STAGE 3  
SHEET 3 OF 7  
FOR CONTINUATION

**MAIN STREET**



REVISIONS	
NAME	DATE

ILLINOIS DEPARTMENT OF TRANSPORTATION  
**ILLINOIS ROUTE 47**  
**MAINTENANCE OF TRAFFIC - STAGE 2**  
**SHEET 4 OF 7**



SCALE: VERT. 1"=50'  
HORIZ. 1"=50'  
DATE: 8/5/2009  
DRAWN BY: E.D.  
CHECKED BY: A.A.C.

PLT DATE = Wednesday, August 05, 2009  
FILE NAME = S:\11-CADD\01-mt\1054\_mct\st2\_ah104.dgn  
PLT SCALE = 1/8"=1'-0"  
USER NAME = 3830